

AUXILIARY SWITCH, 1 NC CONTACT,
1 NO CONTACT,
CONNECTION AUXILIARY CIRCUIT: SCREW TERMINAL,

General technical data:

product brand name		SIRIUS
product designation		auxiliary switch compact feeder
Protection class IP		IP20
Relative humidity • during operating phase	%	10 ... 90
Ambient temperature • during transport • during storage • during operating	°C	-55 ... +80 -55 ... +80 -20 ... +60
Item designation • according to DIN EN 61346-2 • according to DIN 40719 extendable after IEC 204-2 / according to IEC 750		K K

Auxiliary circuit:

Number of NC contacts • for auxiliary contacts		1
Number of NO contacts • for auxiliary contacts		1

Installation/ mounting/ dimensions:

Width	mm	45
Height	mm	32
Depth	mm	25

Connections/ terminals:

Wire stripping length	mm	10
Design of the electrical connection • for auxiliary and control current circuit		screw-type terminals
Design of screw-type connection • for auxiliary contacts		M6
Tightening torque / for auxiliary contacts • with screw-type terminals	N·m	0.8 ... 1.2

Type of the connectable conductor cross-section / for auxiliary contacts <ul style="list-style-type: none"> • solid • finely stranded <ul style="list-style-type: none"> • with conductor end processing 	max. 2x (1 ... 4 mm ²) 2x (0.5 ... 1.5 mm ²), 2x (0.75 ... 2.5 mm ²)
Type of the connectable conductor cross-section / for AWG conductors <ul style="list-style-type: none"> • for auxiliary contacts 	2x (20 ... 16), 2x (18 ... 14), 1x 12

Certificates/ approvals:

Verification of suitability

IEC / EN 60947-6-2

General Product Approval

EMC

Functional Safety / Safety of Machinery



CCC



CSA



GOST



C-TICK



VDE

Shipping Approval



DNV



PRS



RINA

other

[Declaration of Conformity](#)

[other](#)

[Environmental Confirmations](#)

Further information:

Information- and Downloadcenter (Catalogs, Brochures,...)

<http://www.siemens.com/industrial-controls/catalogs>

Industry Mall (Online ordering system)

<http://www.siemens.com/industrial-controls/mall>

Cax online generator

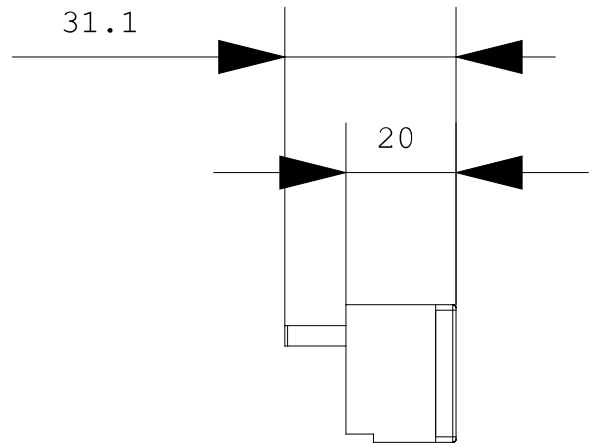
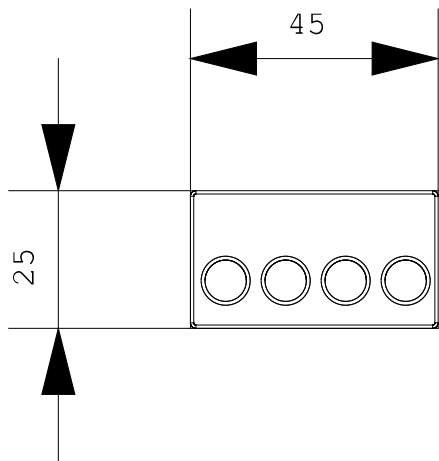
<http://www.siemens.com/cax>

Service&Support (Manuals, Certificates, Characteristics, FAQs,...)

<http://support.automation.siemens.com/WWW/view/en/3RA6913-1A/all>

Image database (product images, 2D dimension drawings, 3D models, device circuit diagrams, ...)

http://www.automation.siemens.com/bilddb/cax_en.aspx?mlfb=3RA6913-1A



last change:

Jul 1, 2013