

DIN RAIL ENCLOSURES

DIN Rail Standard Height Module Boxes

UNIVERSAL ENCLOSURES

HAND HELD CASES

HEAVY DUTY ENCLOSURES

DIN RAIL ENCLOSURES

INTERFACE SUPPORTS

ELECTRICAL ENCLOSURES

DIECAST & METAL ENCLOSURES

DESKTOP & INSTRUMENT CASES

POTTING BOXES

19" ENCLOSURES

19" CABINETS

DEVELOPMENT BOARD ENCLOSURES

CUSTOM SIZED ENCLOSURES

CUSTOM SERVICES

- Snap fit modular design for ease of assembly and custom kitting
 - Base fits 35mm DIN rail or directly to flat surface
 - Moulded in light grey UL94-V0 flame retardant polycarbonate
 - Carries up to 3 PCBs horizontally or 2 vertically
 - Snap fit terminal cover options for IP20 finger protection
 - Snap in covers available in grey, clear, transparent red and smoked
 - Standard enclosure consists of base, top and rail/wall clips
 - Open top as standard, solid top, vented and extended
- wall options available
 - Covers and terminal guards ordered separately and can be supplied in kits
 - Easily customised covers and terminal guards
 - The Clear, Smoked and Red covers are moulded in PC UL94-HB
 - Grey covers are PC UL94-V0
 - Enclosed base offers isolation from DIN rail
 - Front panel ideal for screen printing and recessed solid top for labels and membranes
 - Other colours and EMC shielding available to order
 - Screws to mount base

CNMB



| | BOX LENGTH | HORIZONTAL PCB SIZES | | | VERTICAL PCB SIZES | | PCB FIXING BOSS | |
|----------|------------|----------------------|------------|-----------|--------------------|-----------|-----------------|--------|
| | | A | B | C | D | E | X | Y |
| CNMB/1- | 17.5mm | 86.5x14mm | 57x14mm | 41.8x14mm | 34x59.6mm | 40x14.8mm | 6.2mm | 18.3mm |
| CNMB/2- | 36mm | 86.5x33mm | 57x32mm | 42x32mm | 34x59.6mm | 40x33mm | 6.2mm | 18.3mm |
| CNMB/3- | 53mm | 86.5x50mm | 57x49mm | 42x49mm | 34x59.6mm | 40x50mm | 8.8mm | 18.3mm |
| CNMB/4- | 71mm | 86.5x68mm | 57x67mm | 42x67mm | 34x59.6mm | 40x68mm | 8.8mm | 18.3mm |
| CNMB/5- | 88mm | 86.5x84mm | 57x83mm | 42x83mm | 34x59.6mm | 40x84mm | 8.8mm | 18.3mm |
| CNMB/6- | 106mm | 86.5x103mm | 57x102mm | 42x102mm | 34x59.6mm | 40x103mm | 8.9mm | 18.3mm |
| CNMB/9- | 159mm | 86.5x156mm | 57x155.5mm | 42x155mm | 34x59.6mm | 40x155mm | 8.9mm | 18.3mm |
| CNMB/12- | 212mm | 86.5x208mm | 57x207mm | 42x207mm | 34x59.6mm | 40x208mm | 8.9mm | 18.3mm |

For double row terminals covers both sides, add /2 to type No. (e.g. CNMB/3/2)

For single row terminals cover one side only, add /1 to type No. (e.g. CNMB/3/1)

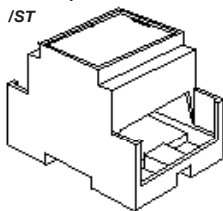
Box supplied with open top as standard

For solid recessed top used for membrane keypads or clear covers to enclose labels, add /ST to type No. (e.g. CNMB/3ST/2)

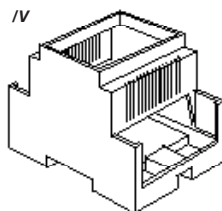
For cooling vents both sides add /V to type No. (e.g. CNMB/3/V/2)

For extended side walls which meet the lower PCB behind terminals, add /W to type No. (e.g. CNMB/3W/2)

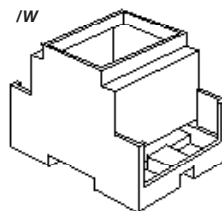
Solid Top /ST



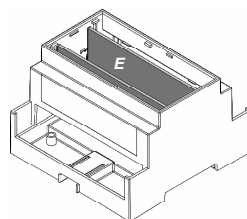
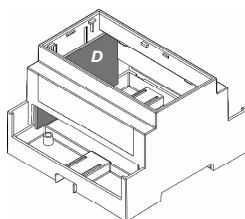
Vented Sides /V



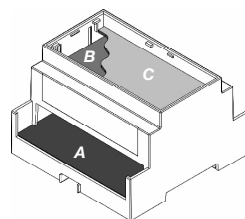
Extended Walls /W



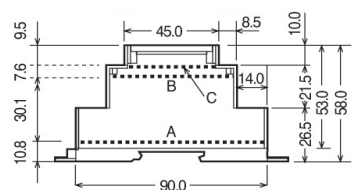
Vertical PCB Positions



Horizontal PCB Positions

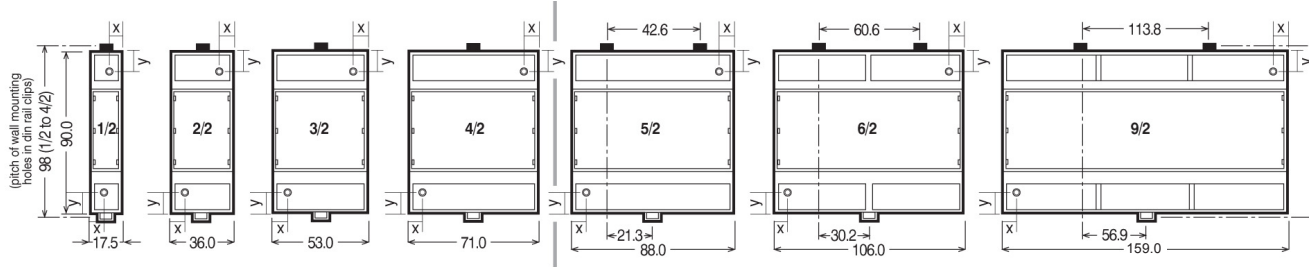


Horizontal PCB Sizes

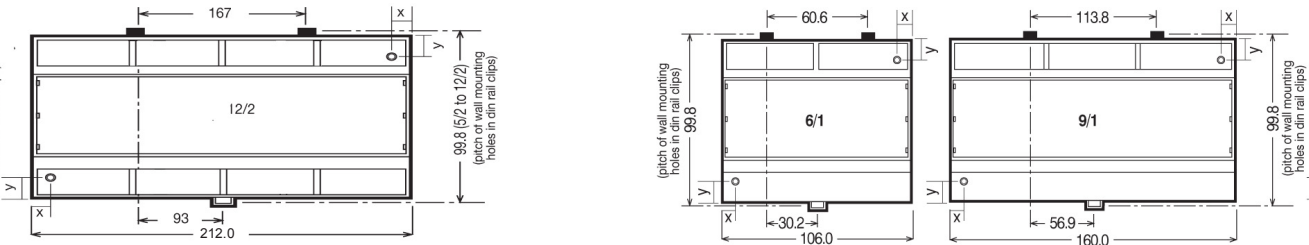


DIN RAIL ENCLOSURES

Double Row Terminals/ covers both sides



Single Row Terminals/ covers on one side



Terminal Guards

| TYPE NO. | STYLE | A | D | E |
|------------|-------|--------|--------|--------|
| CNMB/1/TGS | Solid | 17.5mm | 15.0mm | 14.3mm |
| CNMB/2/TGS | Solid | 35.5mm | 29.9mm | 13.8mm |
| CNMB/3/TGS | Solid | 52.8mm | 45.5mm | 13.8mm |
| CNMB/4/TGS | Solid | 70.6mm | 59.9mm | 13.8mm |
| CNMB/5/TGS | Solid | 87.6mm | 79.5mm | 13.8mm |

*For 6, 9 & 12 Size Module Use CNMB/3TGS

5.08mm pitch perforated

| TYPE NO. | STYLE | A | D | E |
|---------------|-------|--------|--------|--------|
| CNMB/1/TG508P | Solid | 17.5mm | 15.0mm | 14.3mm |
| CNMB/2/TG508P | Solid | 35.5mm | 29.9mm | 13.8mm |
| CNMB/3/TG508P | Solid | 52.8mm | 45.5mm | 13.8mm |
| CNMB/4/TG508P | Solid | 70.6mm | 59.9mm | 13.8mm |
| CNMB/5/TG508P | Solid | 87.6mm | 79.5mm | 13.8mm |

*For 6, 9 & 12 Size Module Use CNMB/3TG508P

5.08mm pitch pre-drilled

| TYPE NO. | STYLE | POLES | A | B | C | D | E |
|--------------|-------------|-------|--------|-------|-------|--------|--------|
| CNMB/1/TG508 | Pre-Drilled | 3 | 17.5mm | 1.0mm | 1.0mm | 15.0mm | 14.3mm |
| CNMB/2/TG508 | Pre-Drilled | 6 | 35.5mm | 1.0mm | 1.0mm | 29.9mm | 13.8mm |
| CNMB/3/TG508 | Pre-Drilled | 9 | 52.8mm | 1.0mm | 1.0mm | 45.5mm | 13.8mm |
| CNMB/4/TG508 | Pre-Drilled | 12 | 70.6mm | 2.7mm | 2.7mm | 59.9mm | 13.8mm |
| CNMB/5/TG508 | Pre-Drilled | 15 | 87.6mm | 2.7mm | 2.7mm | 79.5mm | 13.8mm |

For 6, 9 & 12 Size Module Use CNMB/3/TG508

7.5mm pitch pre-drilled

| TYPE NO. | STYLE | POLES | A | B | C | D | E |
|--------------|-------------|-------|--------|-------|-------|--------|--------|
| CNMB/1/TG750 | Pre-Drilled | 2 | 17.5mm | 1.0mm | 1.0mm | 15.0mm | 14.3mm |
| CNMB/2/TG750 | Pre-Drilled | 4 | 35.5mm | 1.0mm | 1.0mm | 29.9mm | 13.8mm |
| CNMB/3/TG750 | Pre-Drilled | 6 | 52.8mm | 1.0mm | 1.0mm | 45.5mm | 13.8mm |
| CNMB/4/TG750 | Pre-Drilled | 8 | 70.6mm | 2.7mm | 2.7mm | 59.9mm | 13.8mm |
| CNMB/5/TG750 | Pre-Drilled | 10 | 87.6mm | 2.7mm | 2.7mm | 79.5mm | 13.8mm |

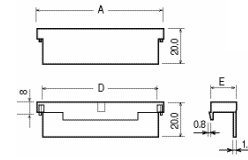
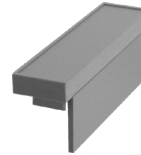
For 6, 9 & 12 Size Module Use CNMB/3/TG750

10.16mm pitch pre-drilled

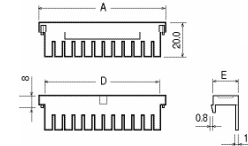
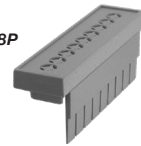
| TYPE NO. | STYLE | POLES | A | B | C | D | E |
|--------------|-------------|-------|--------|-------|-------|--------|--------|
| CNMB/1/TG100 | Pre-Drilled | 2 | 17.5mm | 1.0mm | 1.0mm | 15.0mm | 14.3mm |
| CNMB/2/TG100 | Pre-Drilled | 3 | 35.5mm | 1.0mm | 1.0mm | 29.9mm | 13.8mm |
| CNMB/3/TG100 | Pre-Drilled | 5 | 52.8mm | 1.0mm | 1.0mm | 45.5mm | 13.8mm |
| CNMB/4/TG100 | Pre-Drilled | 6 | 70.6mm | 2.7mm | 2.7mm | 59.9mm | 13.8mm |
| CNMB/5/TG100 | Pre-Drilled | 7 | 87.6mm | 2.7mm | 2.7mm | 79.5mm | 13.8mm |

For 6, 9 & 12 Size Module use CNMB/3/TG100

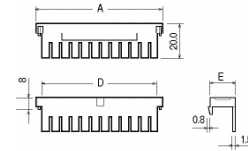
CNMB/ TGS



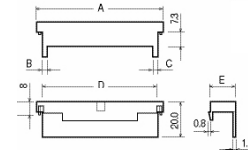
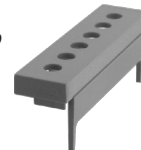
CNMB/ TG508P



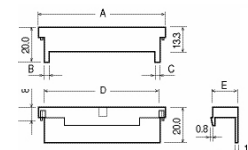
CNMB/ /TG508



CNMB/TG750



CNMB/TG100



UNIVERSAL ENCLOSURES

HAND HELD CASES

HEAVY DUTY ENCLOSURES

DIN RAIL ENCLOSURES

INTERFACE SUPPORTS

ELECTRICAL ENCLOSURES

DIECAST & METAL ENCLOSURES

DESKTOP & INSTRUMENT CASES

POTTING BOXES

19" ENCLOSURES

19" CABINETS

DEVELOPMENT BOARD ENCLOSURES

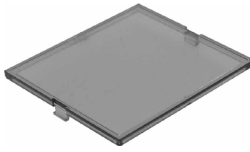
CUSTOM SIZED ENCLOSURES

CUSTOM SERVICES

DIN RAIL ENCLOSURES

UNIVERSAL ENCLOSURES

Standard Covers

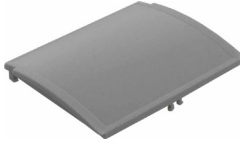


CNMB/P

HAND HELD CASES

HEAVY DUTY ENCLOSURES

Curved Covers



CNMB/PC

DIN RAIL ENCLOSURES

INTERFACE SUPPORTS

Curved Hinged Covers

- For use with extended module only



CNMB/HPC

ELECTRICAL ENCLOSURES

DIECAST & METAL ENCLOSURES

Extended Height Module

- 16mm high
- Accepts hinged, curved lid
- Adds an additional horizontal PCB slot

DESKTOP & INSTRUMENT CASES

POTTING BOXES

Kits

- Each kit contains one grey panel cover and a selection of solid and perforated terminal guards.
- Kits of the most frequently used components are available to order.

19" ENCLOSURES

19" CABINETS

DEVELOPMENT BOARD ENCLOSURES



CNMB/ST/KIT

CUSTOM SIZED ENCLOSURES

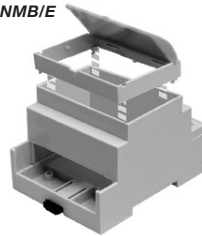
CUSTOM SERVICES

| RED TRANSPARENT | SMOKED TRANSPARENT | CLEAR TRANSPARENT | GREY | SIZE |
|-----------------|--------------------|-------------------|------------|------|
| CNMB/1/PR | CNMB/1/PS | CNMB/1/PC | CNMB/1/PG | 1 |
| CNMB/2/PR | CNMB/2/PS | CNMB/2/PC | CNMB/2/PG | 2 |
| CNMB/3/PR | CNMB/3/PS | CNMB/3/PC | CNMB/3/PG | 3 |
| CNMB/4/PR | CNMB/4/PS | CNMB/4/PC | CNMB/4/PG | 4 |
| CNMB/5/PR | CNMB/5/PS | CNMB/5/PC | CNMB/5/PG | 5 |
| CNMB/6/PR | CNMB/6/PS | CNMB/6/PC | CNMB/6/PG | 6 |
| CNMB/9/PR | CNMB/9/PS | CNMB/9/PC | CNMB/9/PG | 9 |
| CNMB/12/PR | CNMB/12/PS | CNMB/12/PC | CNMB/12/PG | 12 |

| RED TRANSPARENT | SMOKED TRANSPARENT | CLEAR TRANSPARENT | GREY | SIZE |
|-----------------|--------------------|-------------------|------------|------|
| CNMB/1/PRC | CNMB/1/PSC | CNMB/1/PCC | CNMB/1/PGC | 1 |
| CNMB/2/PRC | CNMB/2/PSC | CNMB/2/PCC | CNMB/2/PGC | 2 |
| CNMB/3/PRC | CNMB/3/PSC | CNMB/3/PCC | CNMB/3/PGC | 3 |
| CNMB/4/PRC | CNMB/4/PSC | CNMB/4/PCC | CNMB/4/PGC | 4 |
| CNMB/5/PRC | CNMB/5/PSC | CNMB/5/PCC | CNMB/5/PGC | 5 |
| CNMB/6/PRC | CNMB/6/PSC | CNMB/6/PCC | CNMB/6/PGC | 6 |
| CNMB/9/PRC | CNMB/9/PSC | CNMB/9/PCC | CNMB/9/PGC | 9 |

| RED TRANSPARENT | CLEAR TRANSPARENT | GREY | SIZE |
|-----------------|-------------------|-------------|------|
| CNMB/2/HPRC | CNMB/2/HPCC | CNMB/2/HPGC | 2 |
| CNMB/3/HPRC | CNMB/3/HPCC | CNMB/3/HPGC | 3 |
| CNMB/4/HPRC | CNMB/4/HPCC | CNMB/4/HPGC | 4 |
| CNMB/5/HPRC | CNMB/5/HPCC | CNMB/5/HPGC | 5 |
| CNMB/6/HPRC | CNMB/6/HPCC | CNMB/6/HPGC | 6 |
| CNMB/9/HPRC | CNMB/9/HPCC | CNMB/9/HPGC | 9 |

CNMB/E



| TYPE NO. | WIDTH | SIZE |
|----------|---------|------|
| CNMB/2/E | 34.7mm | 2 |
| CNMB/3/E | 52.0mm | 3 |
| CNMB/4/E | 70.0mm | 4 |
| CNMB/5/E | 86.5mm | 5 |
| CNMB/6/E | 104.5mm | 6 |
| CNMB/9/E | 157.7mm | 9 |

| KIT | KIT PART NO. | EXTENSION MODULE | | | |
|-----------------|--------------|------------------|---------------|---------------|----------|
| | | COMPONENT /PG | COVER /TG508P | TERMINAL /TGS | GUARD /E |
| STANDARD | CNMB/1/KIT | 1 | 2 | 1 | - |
| | CNMB/2/KIT | 1 | 2 | 1 | - |
| | CNMB/3/KIT | 1 | 2 | 1 | - |
| | CNMB/4/KIT | 1 | 2 | 1 | - |
| | CNMB/5/KIT | 1 | 2 | 1 | - |
| | CNMB/6/KIT | 1 | 4* | 2* | - |
| | CNMB/9/KIT | 1 | 6* | 3* | - |
| | CNMB/12/KIT | 1 | 8* | 4* | - |
| EXTENDED HEIGHT | CNMB/1E/KIT | 1 | 2 | 1 | 1 |
| | CNMB/2E/KIT | 1 | 2 | 1 | 1 |
| | CNMB/3E/KIT | 1 | 2 | 1 | 1 |
| | CNMB/4E/KIT | 1 | 2 | 1 | 1 |
| | CNMB/5E/KIT | 1 | 2 | 1 | 1 |
| | CNMB/6E/KIT | 1 | 4* | 2* | 1 |
| | CNMB/9E/KIT | 1 | 6* | 3* | 1 |
| | CNMB/12E/KIT | 1 | 8* | 4* | 1 |

* For size 6, 9 and 12, multiple 'size 3' terminal guards are supplied. For example size 6 requires 2 x 'size 3' guards per side. Kits are also available for vented, solid top and extended wall bodies e.g. CNMB/2ST/KIT Where a box has only one open side (e.g. CNMB/5/1) no solid terminal guards are supplied.