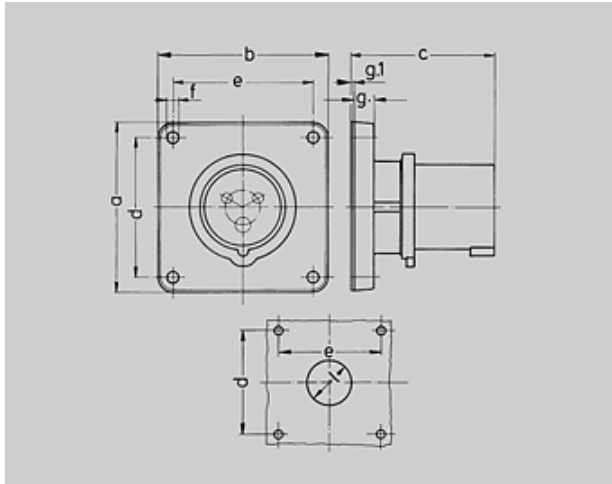




: 816







32A3P 4H110V Anbaustecker IP44

with nickel-plated contacts, a retaining nose to hold the hinged lid of the connector must be provided by the customer in order to ensure satisfactory locking



Drawing	Amp.	16			32		
		2 MB 173/2 Poles			3	4	5
Dim. in mm	a	85,7	85,7	85,7	85,7	85,7	85,7
	b	85,7	85,7	85,7	85,7	85,7	85,7
	c	72	72	72	90	90	90
	d	69,5	69,5	69,5	69,5	69,5	69,5
	e	69,5	69,5	69,5	69,5	69,5	69,5
	f	5,5	5,5	5,5	5,5	5,5	5,5
	g.	11	11	11	11	11	11
	g.1	2	2	2	2	2	2
	l	32	36	36	47	47	47
	Terminal for cond. cross section (mm ²) min.-max.		1,5	1,5	1,5	2,5	2,5
		-4	-4	-4	-10	-10	-10

	: 2083
voltages	: 110V
rated current	: 32A
pole	: 3 pole
IP protection types	: 44
position of ground contact	: 4h
packing unit	: 0010
	: 198 g

		110	230	400	500	>50-500	
		50,60	50,60	50,60	50,60	100-300	300-500
							
16 A	3	810	812				
	4		837	813	814		
	5			815			
32 A	3	816	817				
	4		838	819	820		
	5			821			