

## MK Modular Datacoms (Logic Plus)

### Standards and approvals

Logic Plus Telephone and Data sockets comply with the following:

Telephone sockets K420 and K421

BS 6312: 2.2, OFTEL Approval NS/G/23/L/100005

Data sockets K190 to K194, K501

BS 5733: 1995 (where applicable)

Data sockets K545

Cat 5e performance to EIA/TIA TSB568, BS EN 50173, IEC11801



### Description

A unique modular system in the distinctive Logic Plus style comprising a range of socket modules for Data and Telephone use, with 4 matching frontplates capable of accepting combinations of interchangeable modules. The 'clip-in' design provides a high degree of versatility, making the system ideal for use in all commercial and industrial applications.

### Technical specification

#### Electrical

Cable types:

Telephone CW1311, CW1293, CW1308, CW1316

RJ45: 20 to 26 AWG, 100 ohm Cat 5e UPT cable

No. of cables per termination (Telephone & RJ45):

Telephone: 2

RJ45: 1

BNC

50Ω impedance cable – RG58, RG141, URM43 Belden 9907

Frequency range:

BNC connector: 0 to 4GHz

Impedance:

BNC Connector: 50Ω nominal

Termination type:

RJ45& telephone module – IDC

BNC module – Crimped connection

#### Physical

Temperature range:

Ambient air -20°C to +60°C

IP rating:

IP2XD

Max. installation altitude:

2000 metres

### Features

- Meet all relevant BS, OFTEL and cabling standards
- Interchangeable modules clip into frontplates
- Front fixing facilitates easy exchange of modules
- Part of a range of products for telephone and data processing requirements

#### Telephone sockets and frontplates

- Quick, simple and reliable IDC connectors
- Can be specified for all applications
- Fit in plaster depth boxes

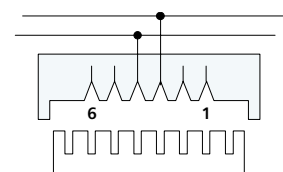
#### Data sockets and frontplates

- Cat 5e specification performance
- Made to stringent quality assurance procedures

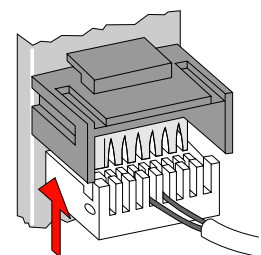
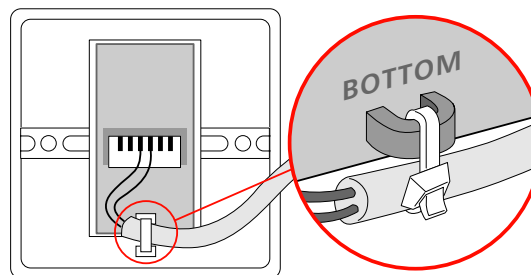
### RJ11 Wiring Scheme

PIN NO.	STRIPPED COLOUR WIRE	SOLID COLOUR WIRE
1	WHITE / green	WHITE
2	WHITE / orange	BLACK
3	BLUE / white	RED
4	WHITE / blue	GREEN
5	ORANGE / white	YELLOW
6	GREEN / white	BLUE

**Note:** Main wire colour is shown in capitals



Rear View of Terminal Connection Block





technical hotline +44 (0)1268 563720

wiring devices

## MK Modular Datacoms (Logic Plus)

### Installation (Data sockets)

#### RJ45 modules

In order to maintain Category 5e performance, install cabling in accordance EIA/TIA or ISO General Cabling Standards.

### Installation (Telephone socket modules)

#### Product performance, systems compatibility

Master Sockets: For use as the first socket outlet on a direct exchange. They contain the required surge protector (for line protection against electrical surges) and ringing capacitor.

Secondary Sockets: for use as extension sockets when connected on the same line as a Master Socket.

#### Installation tools required IDC Connectors (telephone & RJ45 outlets)

MK insertion tool List No. 400 or 22630.

Wire pull-out force: 10.5 Newtons when installed correctly.

#### Wiring regulation restrictions

Domestic Installations: The total REN (Ring Equivalent Number) value of all telephone equipment connected on a line must not exceed 4.

Industrial and commercial installations: MK telephone sockets are suitable in all situations after the PBX/PABX has been installed by a recognised installer. For key systems and other 'special' systems, the manufacturer's instructions should be referred to.

#### Safety information

None of the above products should be installed into the same fixing or mounting boxes as mains rated equipment or cable.

### Cable management

Logic Plus Modular Data and Telephone Sockets can be mounted in a variety of MK trunking systems.

## MK Modular Datacoms (Decorative)

### Standards and approvals

MK Telephone and Data sockets comply with the following:

Telephone sockets K452 and K457

BS 6312: 2.2, OFTEL Approval NS/G/23/L/100005

Data sockets K290 to K452, K458

BS 5733: 1995 (where applicable)

Data sockets K455

Cat 5e performance to EIA/TIA TSB568, BS EN 50173, IEC11801

### Technical specification

#### Electrical

Cable types:

Telephone CW1311, CW1293, CW1308, CW1316

RJ45: 20 to 26 AWG, 100 ohm Cat 5e UPT cable

No. of cables per termination (Telephone & RJ45):

Telephone: 2

RJ45: 1

BNC

50Ω impedance cable – RG58, RG141, URM43 Belden 9907

Frequency range:

BNC connector: 0 to 4GHz

Impedance:

BNC Connector: 50Ω nominal

Termination type:

RJ45 & telephone module – IDC

BNC module – Crimped connection

#### Physical

Temperature range:

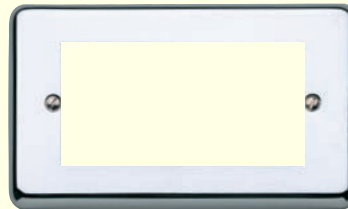
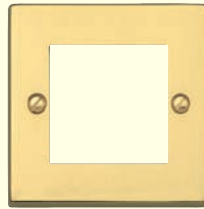
Ambient air -20°C to +60°C

IP rating:

IP2XD

Max. installation altitude:

2000 metres



### Description

A unique modular system in the majority of MK decorative wiring device styles comprising a range of socket modules for data and telephone use with frontplates capable of accepting combinations of interchangeable modules. Modules clip into mounting frames which, when attached to frontplates, provide a high degree of versatility, making the system ideal for use in all commercial and industrial applications.

#### Features

- Meet all relevant BS, OFTEL and cabling standards
- Part of a range of products for telephone and data processing requirements
- Interchangeable modules clip into grid frame which attaches to frontplate
- Quick, simple and reliable IDC connectors
- Can be specified for all applications

#### Data sockets and frontplates

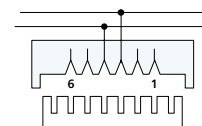
- Cat 5e specification performance
- Made to stringent quality assurance procedures

#### Telephone sockets and frontplates

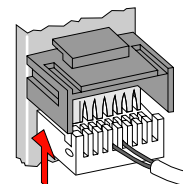
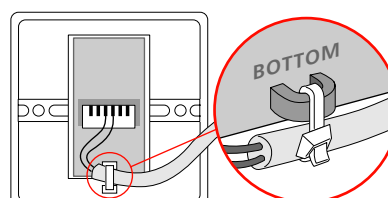
#### RJ11 Wiring Scheme

PIN NO.	STRIPPED COLOUR WIRE	SOLID COLOUR WIRE
1	WHITE / green	WHITE
2	WHITE / orange	BLACK
3	BLUE / white	RED
4	WHITE / blue	GREEN
5	ORANGE / white	YELLOW
6	GREEN / white	BLUE

**Note:** Main wire colour is shown in capitals



Rear View of Terminal Connection Block





technical hotline +44 (0)1268 563720

wiring devices

## MK Modular Datacoms (Decorative)

### Installation (Data sockets)

#### RJ45 modules

In order to maintain Category 5e performance, install cabling in accordance EIA/TIA or ISO General Cabling Standards.

### Installation (Telephone socket modules)

#### Product performance, systems compatibility

Master Sockets: For use as the first socket outlet on a direct exchange. They contain the required surge protector (for line protection against electrical surges) and ringing capacitor.

Secondary Sockets: for use as extension sockets when connected on the same line as a Master Socket.

#### Installation tools required IDC Connectors (telephone & RJ45 outlets)

MK insertion tool List No. 400 or 22630.

Wire pull-out force: 10.5 Newtons when installed correctly.

#### Wiring regulation restrictions

Domestic Installations: The total REN (Ring Equivalent Number) value of all telephone equipment connected on a line must not exceed 4.

Industrial and commercial installations: MK telephone sockets are suitable in all situations after the PBX/PABX has been installed by a recognised installer. For key systems and other 'special' systems, the manufacturer's instructions should be referred to.

#### Safety information

None of the above products should be installed into the same fixing or mounting boxes as mains rated equipment or cable.

### Cable management

MK Modular Data and Telephone Sockets can be mounted in a variety of MK trunking systems.