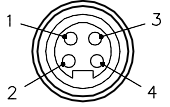

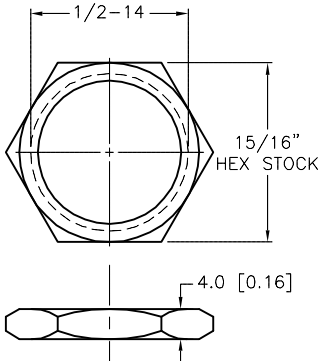
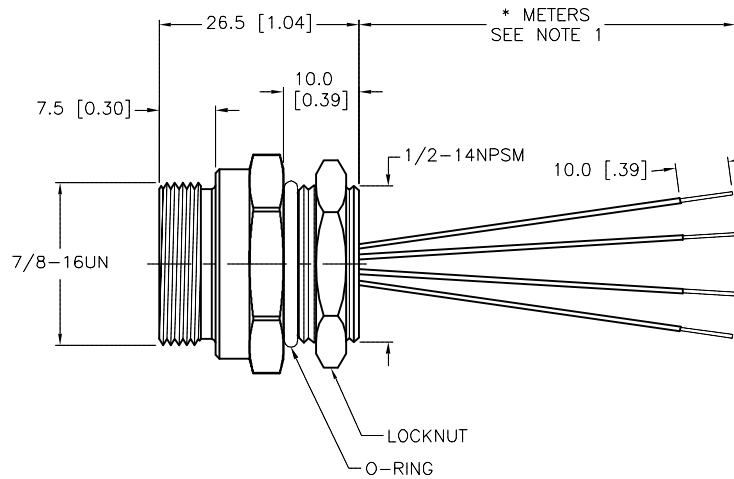
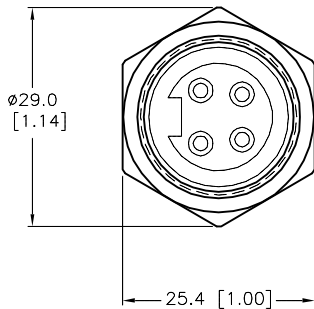


MALE END VIEW	LOCKNUT		SPECIFICATIONS																				
 <p>1 = BROWN 2 = WHITE 3 = BLUE 4 = BLACK</p> 			<table border="1" style="width:100%; border-collapse: collapse;"> <tr><td>CONTACT CARRIER MATERIAL</td><td>TPU</td></tr> <tr><td>CONTACT MATERIAL/PLATING</td><td>BRASS/GOLD</td></tr> <tr><td>HOUSING MATERIAL/FINISH</td><td>STAINLESS STEEL/PASSIVATED</td></tr> <tr><td>O-RING MATERIAL</td><td>BUNA-N</td></tr> <tr><td>RATED CURRENT [A]</td><td>9.0 A</td></tr> <tr><td>RATED VOLTAGE [V]</td><td>600 V</td></tr> <tr><td>CONDUCTOR INSULATION MATERIAL</td><td>PVC</td></tr> <tr><td>NUMBERS OF CONDUCTORS [AWG]</td><td>4x18 AWG</td></tr> <tr><td>TEMPERATURE RATING</td><td>-40°C to +105°C (-40°F to +221°F)</td></tr> <tr><td>PROTECTION CLASS</td><td>MEETS NEMA 1,3,4,6P AND IEC IP67</td></tr> </table>	CONTACT CARRIER MATERIAL	TPU	CONTACT MATERIAL/PLATING	BRASS/GOLD	HOUSING MATERIAL/FINISH	STAINLESS STEEL/PASSIVATED	O-RING MATERIAL	BUNA-N	RATED CURRENT [A]	9.0 A	RATED VOLTAGE [V]	600 V	CONDUCTOR INSULATION MATERIAL	PVC	NUMBERS OF CONDUCTORS [AWG]	4x18 AWG	TEMPERATURE RATING	-40°C to +105°C (-40°F to +221°F)	PROTECTION CLASS	MEETS NEMA 1,3,4,6P AND IEC IP67
CONTACT CARRIER MATERIAL	TPU																						
CONTACT MATERIAL/PLATING	BRASS/GOLD																						
HOUSING MATERIAL/FINISH	STAINLESS STEEL/PASSIVATED																						
O-RING MATERIAL	BUNA-N																						
RATED CURRENT [A]	9.0 A																						
RATED VOLTAGE [V]	600 V																						
CONDUCTOR INSULATION MATERIAL	PVC																						
NUMBERS OF CONDUCTORS [AWG]	4x18 AWG																						
TEMPERATURE RATING	-40°C to +105°C (-40°F to +221°F)																						
PROTECTION CLASS	MEETS NEMA 1,3,4,6P AND IEC IP67																						



CABLE LENGTH	TOLERANCE *
ALL LENGTHS	+ 4% (OR 50mm) OF LENGTH - 0% (OR 0mm) OF LENGTH WHICHEVER IS GREATER
STRIP LENGTH	TOLERANCE *
0-7mm	±0.5mm
8-29mm	±1.0mm
30-49mm	±2.0mm
50-69mm	±3.0mm
70-100mm	±4.0mm
OVER 100mm	±5.0mm

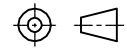

* UNLESS OTHERWISE SPECIFIED

NOTES:

1. "*" INDICATES LEAD LENGTH IN METERS. CONTACT TURCK TO ORDER SPECIFIC LENGTHS.
2. "W/LN" DESIGNATES LOCKNUT INCLUDED WITH RECEPTACLE ASSEMBLY.

SOURCE DRAWING - FOR REFERENCE ONLY

B	UPDATE CONDUCTOR SIZE CALLOUT TO 18 AWG	RDS	07/18/14	46468
REV	DESCRIPTION	BY	DATE	ECO NO.

RELATED DOCUMENTS 1. 2. 3. 4.	3RD ANGLE PROJECTION 	THIS DRAWING IS CONFIDENTIAL AND THE PROPERTY OF TURCK INC. USE OF THIS DOCUMENT WITHOUT WRITTEN PERMISSION IS PROHIBITED.	 <i>High Technology Sensors and Automation Controls</i>	3000 CAMPUS DRIVE MINNEAPOLIS, MN 55441 1-800-544-7769 (763) 553-7300 (763) 553-0708 fax turck.com
MATERIAL	SEE SPECIFICATIONS	DRFT	RDS	DATE 03/03/10
FINISH	SEE SPECIFICATIONS	APVD	SCALE	1=1.0
		UNIT OF MEASUREMENT		DESCRIPTION
		MILLIMETER [INCH]		RSFV 40-*M W/LN
		DO NOT SCALE THIS DRAWING		IDENTIFICATION NO.
				REV
				B
			FILE: 777025988	SHEET 1 OF 1