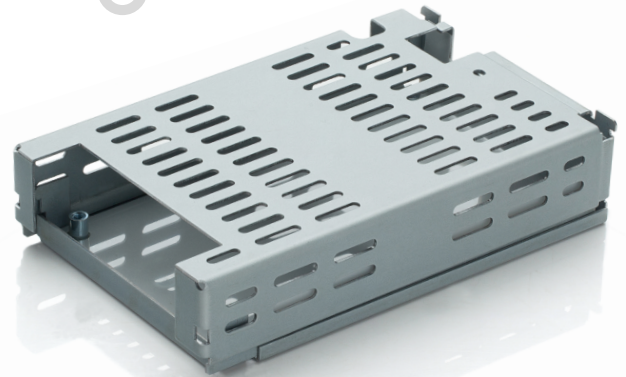


Features

- Noncorrosive
- Easy assembly
- Low weight
- Fully safe



FOR WLP350, MWLP350 SERIES

Derating Guidelines

WLP350/MWLP350: Ambient > 50°C, derate by 50% to 70°C. 375 LFM airflow to be maintained

Contents

Mounting Base, Cover, Insulator, Fixing Screws

Mechanical Dimensions

Cover and Base Material EG (Zintec) / CRC (Powder coating/Passivation), 1.0 mm

Marked A: PCB MTG; B: COVER MTG; C: SYSTEM MTG

All dimensions are in mm. General tolerance :+/-0.5

Mechanical Drawing

