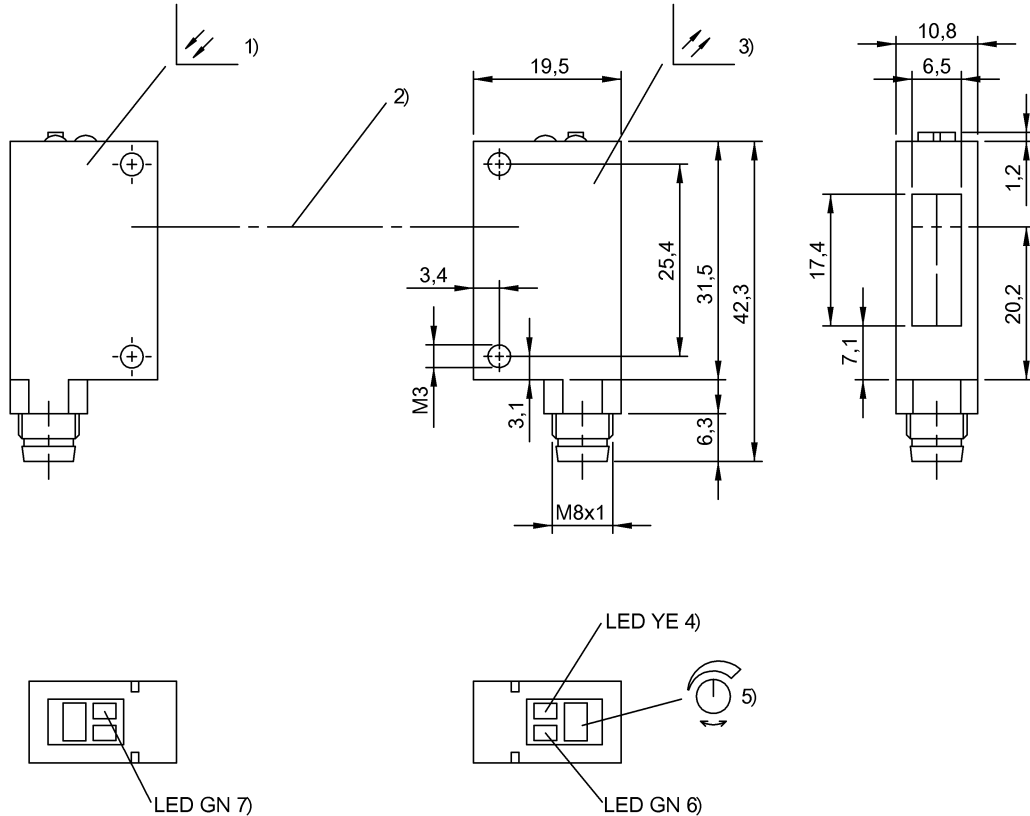
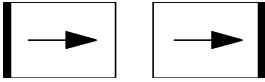


BOS 5K-PS-IX10-S75
Ordering code: BOS0126

Through-beam sensor
 Series 5K
 Working Range: 0...10 mm

PNP (1x), NO (pin 4)
 Infrared
 DC, direct current



1) Emitter, 2) Optical axis, 3) Receiver, 4) Stability, 5) Sn, 6) Output function, 7) Power

Characteristic data

| | |
|-------------------------------------|-------------------------|
| Operating voltage | 10...30 V DC |
| Connection | Connector, M8x1-S75 |
| Switching freq. f max. | 500 Hz |
| Indicator | Stability - LED GN |
| Setting | Sensitivity (Sn) |
| Adjuster | Potentiometer 270° (1x) |
| Short-circuit protected | yes |
| Protected against polarity reversal | yes |
| Enclosure Type per IEC 60529 | IP67 |

Optical data

| | |
|--------------------------------|--------------|
| Principle of optical operation | Through-beam |
| Switching function, optical | NO: dark-on |
| Light type | Infrared |
| Wavelength | 880 nm |

Electrical data

| | |
|--------------------------------|------------|
| Rated operating voltage Ue DC | 24 V |
| Effective operating current Ie | 100 mA |
| Ripple max. (% of Ue) | 8 |
| Switching output | PNP (1x) |
| Switching function | NO (pin 4) |

| | |
|-------------------------------|-------|
| Turn-off delay toff max. | 1 ms |
| Turn-on delay ton max. | 1 ms |
| No-load current max. Io at Ue | 20 mA |
| Voltage drop Ud max. (at Ie) | 1,2 V |

Mechanical data

| | |
|----------------------------|-----------------------|
| Eff. switching distance Sr | 10000 mm |
| Operating range Ro | 0...10 m |
| Range Sn | Sn = 10 m, adjustable |
| Connector type | M8x1-S75 |
| Sensing surface material | PC |
| Housing material | PC, PBT |
| Mounting type | Screw M3 |
| Design | Block, 90° connection |
| Ambient temperature | -25...55 °C |

Basic data

| | |
|----------------|---------------|
| Basic standard | IEC 60947-5-2 |
|----------------|---------------|

BOS 5K-PS-IX10-S75
Ordering code: BOS0126

Through-beam sensor
Series 5K
Working Range: 0...10 mm

PNP (1x), NO (pin 4)
Infrared
DC, direct current

BALLUFF
sensors worldwide

Operating object (test target): Gray card, 200 x 200, lateral approach
Only for NFPA 79 applications (machines with a supply voltage of maximum 600 volts). Device shall be connected only by using any R/C (CYJV2) cord, having suitable ratings.
For additional information, refer to user's guide.
Order accessories separately.

