

Multiple High-speed Ports

for Servers, PCs and Power Workgroups



10/100 Mbps Fast Ethernet Switches

FS105 FS108 FS116

NETGEAR's FS100 series Fast Ethernet Switches provide your LAN with high-speed, 10/100 Mbps auto-sensing connectivity for as many as 5, 8, or 16 users. Just plug in your Ethernet cables, connect a power cord, and you're ready to go—there's no software to configure. Engineered without the need for internal fans, they operate silently. And each of these very compact switches is housed in a sturdy metal case for years of dependable use.

When you want greater bandwidth and increased network access for your growing business, plus the added benefit of quiet operation, NETGEAR's FS105, FS108, and FS116 are your best choices for quality, convenience, and smooth-running usability—all at very affordable prices.

AT YOUR SERVICE

Five, eight, or sixteen ports provide LAN access for many users.

COMPACT

Solidly built in small sizes that are easy to position when space is at a premium.

SIMPLE TO USE

Once you connect the hardware, your switch is operating!

QUIET

No fan means no noise, which helps maintain a peaceful atmosphere in your busy office.

GREAT VALUE

Competitively priced—compare them to others and see the difference.



Help is there when you need it.

NETGEAR provides free, 24x7

telephone and e-mail technical

support in English, with selected

local language support during

office hours.

www.NETGEAR.com

NETGEAR™

NETGEAR Inc.
 4401 Great America Parkway
 Santa Clara, CA 95054
 USA

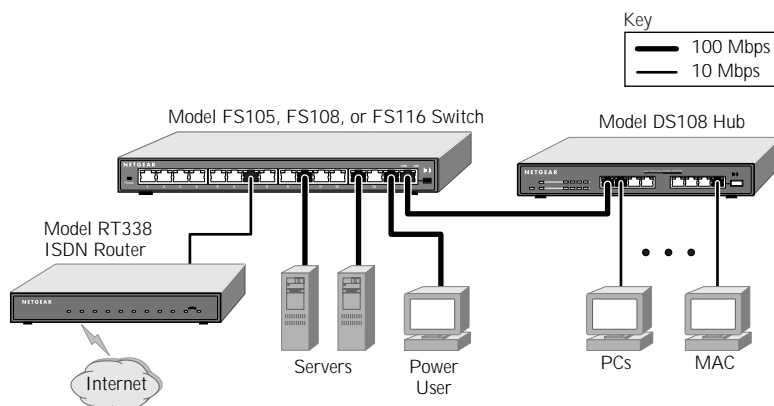
Phone: 1-888-NETGEAR
 e-mail: support@NETGEAR.com
 www.NETGEAR.com

In Country Phone Support
 (24x7 phone support in English, local language support during office hours.)

Australia	1800 787-638	Korea	00308-11-0319
Austria	00800-6384327 (00800-NETGEAR)	Netherlands	0800-023-0981
Denmark	808-82179	New Zealand	+800-1233-4566
Canada	1-888-NETGEAR	Norway	800-12041
Finland	0800-111-036	Singapore	+800-1233-4566
France	0800 77-17-53	Sweden	0200-298-298
Germany	00800-6384327 (00800-NETGEAR)	Switzerland	00800-638-4327 (00800-NETGEAR)
Hong Kong	+800-1233-4566	United Kingdom	020-7216-0014
Japan	0120-66-5402	United States	1-888-NETGEAR
		All Other Countries	+1 801-236-8499

NETGEAR™ is a trademark of NETGEAR, Inc. Windows® is a registered trademark of Microsoft Corporation. Other brand and product names are trademarks or registered trademarks of their respective holders. Information is subject to change without notice. All rights reserved.

July 2000



TECHNICAL SPECIFICATIONS

FS105

Network Ports
 5 auto speed-sensing UTP ports

Dimensions
 W 158 mm (6.2")
 D 103 mm (4.1")
 H 27 mm (1.1")

Weight
 0.6 kg (1.25 lb)

AC Power
 7.5 W

Standards Compliance
 IEEE 802.3i 10BASE-T
 IEEE 802.3u 100BASE-TX
 IEEE 802.3x Flow Control

Status LEDs
 Power
 Collision/Rx/Tx and speed indicators for each port on the FS105 and FS108
 Link, speed, and activity indicators built into each RJ-45 port

Electromagnetic Emissions
 CE mark, commercial
 FCC Part 15 Class A
 EN55 022 (CISPR 22), Class A
 VCCI Class A
 C-Tick

Warranty
 5 years for unit
 1 year for power adapter

FS108

Network Ports
 8 auto speed-sensing UTP ports

Dimensions
 W 235 mm (9.3")
 D 103 mm (4.1")
 H 27 mm (1.1")

Weight
 0.74 kg (1.7 lb)

AC Power
 12.5 W

FS116

Network Ports
 16 auto speed-sensing UTP ports

Dimensions
 W 285 mm (11.3")
 D 103 mm (4.1")
 H 27 mm (1.1")

Weight
 0.9 kg (2.0 lb)

AC Power
 16.5 W

PACKAGE CONTENTS

- Fast Ethernet Switch
- Wall-mount kit
- AC adapter
- Quick Installation Guide
- Warranty and registration card

SYSTEM REQUIREMENTS

- Network cables
- Network card for each PC or server
- Network software (e.g., Windows, Linux, MacOS)



www.NETGEAR.com

NETGEAR™