

Hi Spot 95 Superia Extrallfe

Hi-Spot 95 75W 240V Sp Sleeve

0021232



Range features

- Halogen light without the need for a transformer
- Unique, patented, spiral faceted aluminised reflector
- 100% dimmable
- For use in mains voltage E27 cap downlights, spotlights and luminaires
- Use dichroic lamps for lighting food, textiles and other objects sensitive to heat
- Suitable for outdoor use when protected from direct contact with water
- Average rated life 3000 hrs - 50% longer life than conventional halogen PAR lamps



PRODUCT OVERVIEW

Ordering number	0021232
Light colour	829 Warm white
Technology	Halogen
Energy class	D
Average life (Rated) (h)	3000
Lamp finish	Aluminium
Lamp shape	Reflector
Dimmable	Yes
Cap/Base	E27
Type	PAR 30
EAN code	54 102882 12326
CRI (Ra)	100
Beam angle (°)	10
Colour temperature (K)	2900
Useful luminous flux (Rated) (lm)	640
Watt (Nominal) (W)	75
Equivalent watt (W)	86
Voltage (V)	240

Hi Spot 95 Superia Extrallfe

Hi-Spot 95 75W 240V Sp Sleeve

0021232

DATA TABLE

General data

Ordering number	0021232
Technology	Halogen
Average life (Rated) (h)	3000
Average life (Nominal) (h)	3000
Energy class	D
Energy saving lamp	No
Lamp shape	Reflector
Lamp finish	Aluminium
Dimmable	Yes
Cap/Base	E27
Type	PAR 30
EAN code	5410288212326
E-number FI	4749320
E-number SE	8355907
Long description	Halogen light without the need for a transformer. Unique, patented, spiral faceted aluminised reflector. 100% dimmable. For use in mains voltage E27 cap downlights, spotlights and luminaires. Use dichroic lamps for lighting food, textiles and other objects sensitive to heat. Suitable for outdoor use when protected from direct contact with water. Average rated life 3000 hrs - 50% longer life than conventional halogen PAR lamps
Product name	Hi-Spot 95 75W 240V Sp Sleeve
Lamp mercury content (mg)	0
Starting time (max) (s)	0
Warm-up time to 60% of full light (max) (s)	Instant Full Light
Control gear required	No
Fixture rating	Open
IEC Reference	IEC 60357
IEC Reference 2	IEC 60432-3
IEC Reference 3	IEC 60630
Intended purpose	General lighting
No. of switching cycles before premature failure (min)	>12000
Special purpose lamp	No
Transformer required	No
Sales pack quantity	15

Hi Spot 95 Superia Extrallfe

Hi-Spot 95 75W 240V Sp Sleeve

0021232

Optical data

Light colour	829 Warm white
CRI (Ra)	100
Beam angle (Rated) (°)	10
Suitable for accent lighting	Yes
Beam angle (°)	10
Colour temperature (K)	2900
Useful luminous flux (Rated) (lm)	640
Lumen maintenance at end of nominal life (%)	80
Luminous flux (Nominal) (lm)	640
Peak intensity (cd)	6900

Electrical data

kWh per 1000 hours burning time	75
Equivalent watt (W)	86
Watt (Rated) (W)	75
Watt (Nominal) (W)	75
Voltage (V)	240
Current (A)	0.31
Lamp power factor	1

Physical data

Lamp Length (mm) - C/L	88
Lamp Diameter (mm) - D	95
Lamp dimension equal to filament lamp equivalent	Yes
Packaging outer width (cm)	28.5
Packaging outer length (cm)	48
Packaging outer height (cm)	11
Packaging single length (cm)	8.6
Packaging single width (cm)	8.6
Packaging single height (cm)	9.6
Designed for optimum use in non standard conditions	No

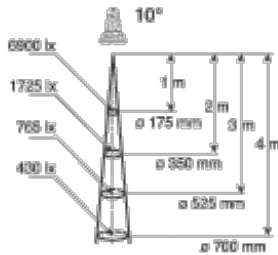
Hi Spot 95 Superia Extrallfe

Hi-Spot 95 75W 240V Sp Sleeve

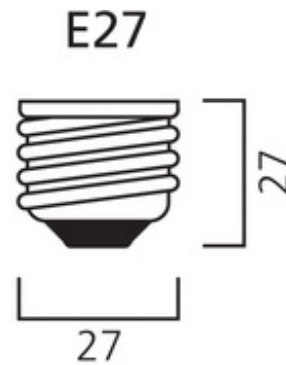
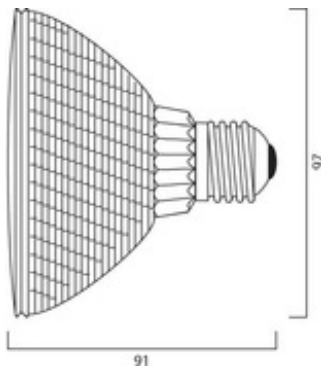
0021232

PHOTOMETRY

Hi-Spot 95 - 75W/10°



TECHNICAL DRAWINGS



ENERGY LABEL

