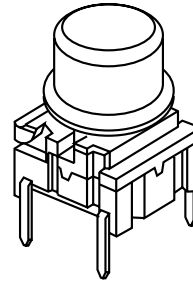


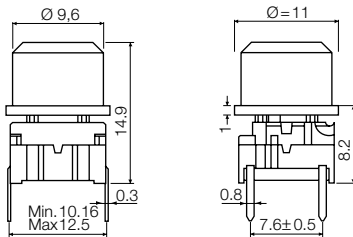
multimec® 3F + 1D/1E/1F



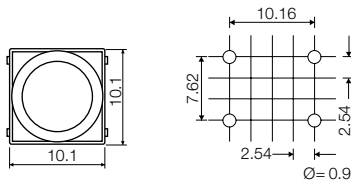
Technical Data:

- through-hole or SMD
- 50mA/24VDC
- single pole/momentary
- 10.000.000 operations life time
- IP67 sealing
- temperature range:
low temp: -40/+115°C
high temp: -40/+160°C

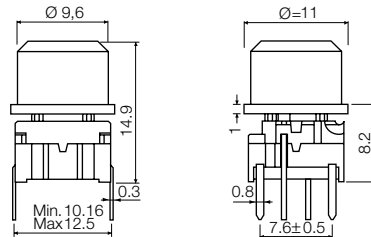
Dimensions (through-hole)



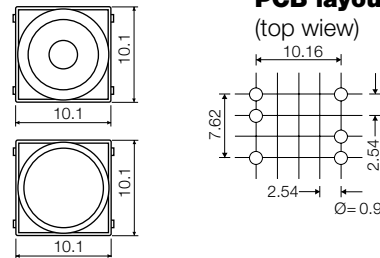
PCB layout



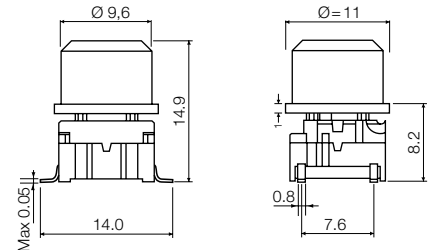
Dimensions (w/LED)



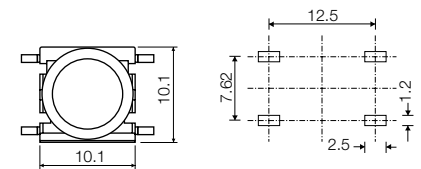
PCB layout (top view)




Dimensions (SMD)



PCB layout






HOW TO ORDER

3 F	<input type="checkbox"/>	<input type="checkbox"/>	+	<input type="checkbox"/>	<input type="checkbox"/>	<input type="checkbox"/>	<input type="checkbox"/>
Switch	Mounting	L 6 low temp.		1 D	00 blue	30 ultra blue	50 metal dark blue
	T through-hole	H 9 high temp.		Cap	02 green	40 dusty blue	53 metal light grey
	S surface mount				03 grey	42 aqua blue	57 metal dark grey
					04 yellow	32 mint green	58 metal bordeaux
					06 white	33 tele grey	
					08 red	34 melon	
					09 black	38 noble red	

Standard versions:

3FTL6
3FTH9
3FSH9
3FSH9R

3 F	T	<input type="checkbox"/>	+	<input type="checkbox"/>	<input type="checkbox"/>	<input type="checkbox"/>	<input type="checkbox"/>
Switch	Mounting	L 6 low temp.		LED	Cap 1D	1 1	Lens
	T through-hole	H 9 high temp.		00 blue		transparent	
				20 green	Cap 1E	00 blue	1 transparent
				40 yellow		02 green	2 green
				80 red	Cap 1F	03 grey	4 yellow
				2040 green/yellow		04 yellow	8 red
				8020 red/green		06 white	
				8040 red/yellow		08 red	
						09 black	

Ordering example: 3FTL620 + 1E032