

EW-7811USC

Quick Installation Guide

7-2014/ v1.0

Edimax Technology Co., Ltd.

No.3, Wu-Chuan 3rd Road, Wu-Gu, New Taipei City 24891, Taiwan

Email: support@edimax.com.tw

Edimax Technology Europe B.V.

Fijenhof 2, 5652 AE Eindhoven, The Netherlands

Email: support@edimax.nl

Edimax Computer Company

3350 Scott Blvd., Bldg.15 Santa Clara, CA 95054, USA

Live Tech Support: 1(800) 652-6776

Email: support@edimax.com

I. Product Information.....	1
I-1. Package Contents	1
I-2. LED Status	1
I-3. System Requirements.....	1
I-4. Safety	2
II. Installation.....	3
III. Windows.....	5
III-1. Driver Installation	5
III-2. Driver Uninstallation.....	8
III-2-1. Windows XP/Vista/7	8
III-2-2. Windows 8/8.1.....	8
IV. Mac OS	9
IV-1. Driver Installation	9
IV-2. Driver Uninstallation.....	15
V. Linux	16
V-1. Driver Installation	16
V-1. Driver Uninstallation.....	20
VI. Disabling Network Adapters	21
V-1. Windows XP	21
VI-2. Windows Vista	21
VI-3. Windows 7	22
VI-4. Windows 8/8.1.....	23
VI-5. Mac	24
VI-6. Linux.....	25
VII. Using The Adapter.....	26
VII-1. Windows	26
VII-2. Mac: Connect to a Wi-Fi network.....	27
VII-3. Mac: Wireless Utility.....	29
VII-3-1. Link Status	29
VII-3-2. Profiles	30
VII-3-3. Available Network.....	32
VII-3-4. WPS.....	33
VII-3-5. Information	36
VII-4. WPS Setup.....	36

Multi-Language Quick Installation Guide (QIG) on the CD

Čeština: Českého průvodce rychlou instalací naleznete na přiloženém CD s ovladači

Deutsch: Finden Sie bitte das deutsche S.A.L. beiliegend in der Treiber CD

Español: Incluido en el CD el G.R.I. en Español.

Français: Veuillez trouver l'français G.I.R ci-joint dans le CD

Italiano: Incluso nel CD il Q.I.G. in Italiano.

Magyar: A magyar telepítési útmutató megtalálható a mellékelt CD-n

Nederlands: De nederlandse Q.I.G. treft u aan op de bijgesloten CD

Polski: Skrócona instrukcja instalacji w języku polskim znajduje się na załączonej płycie CD

Português: Incluído no CD o G.I.R. em Portugues

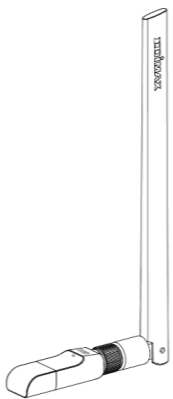
Русский: Найдите Q.I.G. на русском языке на приложенном CD

Türkçe: Ürün ile beraber gelen CD içinde Türkçe Hızlı Kurulum Kılavuzu'nu bulabilirsiniz

Українська: Для швидкого налаштування Вашого пристрою, будь ласка, ознайомтесь з інструкцією на CD

I. Product Information

I-1. Package Contents



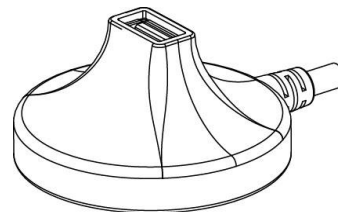
EW-7811USC



QIG



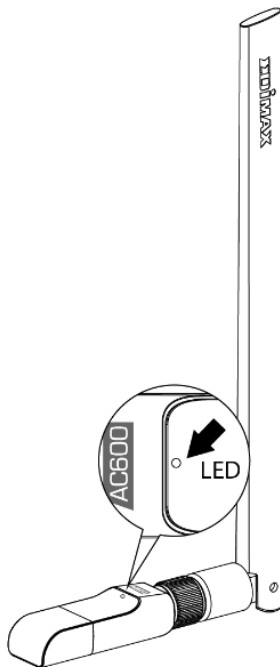
CD-ROM



USB Cradle (1.0m Cable)

I-2. LED Status

LED	LED Status	Description
WLAN	On	Wireless activity: transmitting or receiving data.
	Off	No wireless activity.



I-3. System Requirements

- Windows XP/Vista/7/8/8.1, Mac OS X 10.4 - 10.9, Linux
- USB 2.0 Port
- Hard Disk: 100MB
- CD-ROM Drive

I-4. Safety

In order to ensure the safe operation of the device and its users, please read and act in accordance with the following safety instructions.

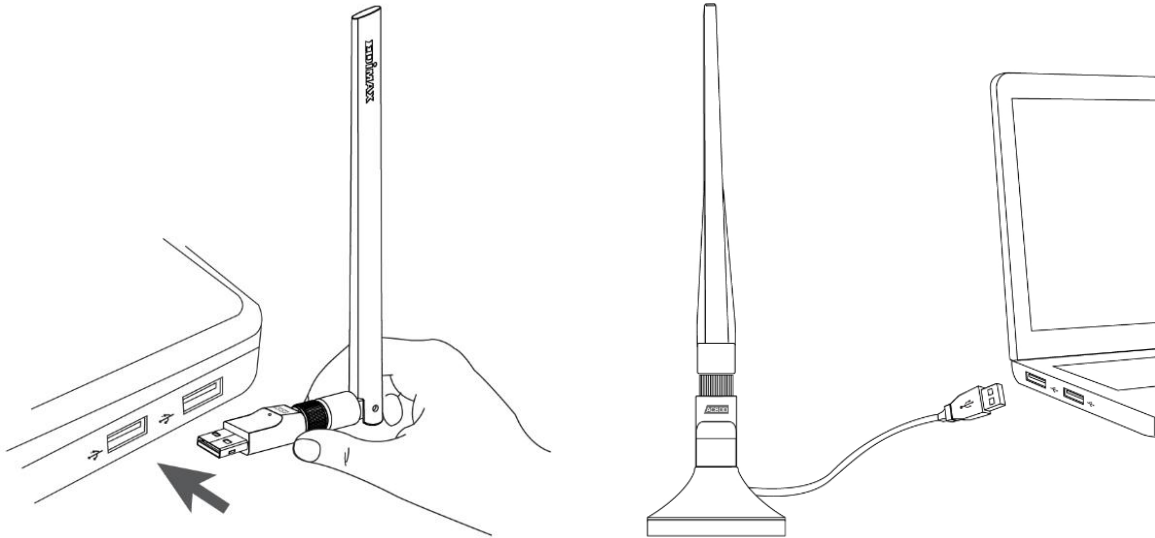
- 1.** The wireless adapter is designed for indoor use only; do not place the wireless adapter outdoors.
- 2.** Do not place the wireless adapter in or near hot/humid places, such as a kitchen or bathroom.
- 3.** The wireless adapter contains small parts that are a danger to small children under 3 years old. Please keep the wireless adapter out of reach of children.
- 4.** Do not place the wireless adapter on paper, cloth, or other flammable materials. The wireless adapter will become hot during use.
- 5.** There are no user-serviceable parts inside the wireless adapter. If you experience problems with the wireless adapter, please contact your dealer of purchase and ask for help.
- 6.** The wireless adapter is an electrical device and as such, if it becomes wet for any reason, stop using it immediately. Contact an experienced electrical technician for further help.

II. Installation

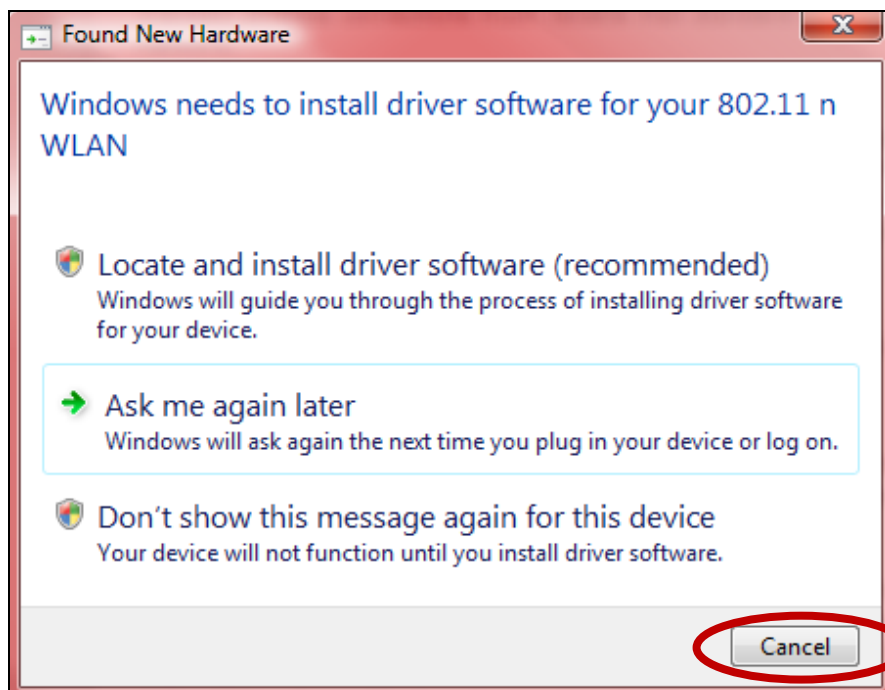
1. Switch on your computer and insert the USB adapter into an available USB port of your computer, using the included USB cradle for flexible positioning and better wireless reception if you wish.



Never use force to insert the USB adapter.



2. If a Hardware Wizard/Driver Installation window opens as shown below, please click “Cancel” or “Close”.



3. Insert the included CD-ROM into the CD drive of your computer.
4. For **Windows** users the setup wizard will open. For **Mac** users the CD's "Mac" folder will open. **Linux** drivers are also included in the "Linux" folder.



If the CD doesn't auto-run or if you downloaded the setup wizard, please browse to the "Autorun", "Mac" or "Linux" folder of the CD for Windows, Mac or Linux users respectively.

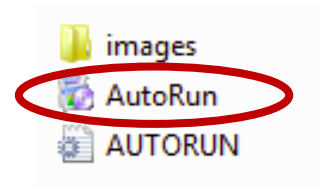
5. Please follow the instructions in the appropriate chapter for your operating system.

III. Windows

III-1. Driver Installation



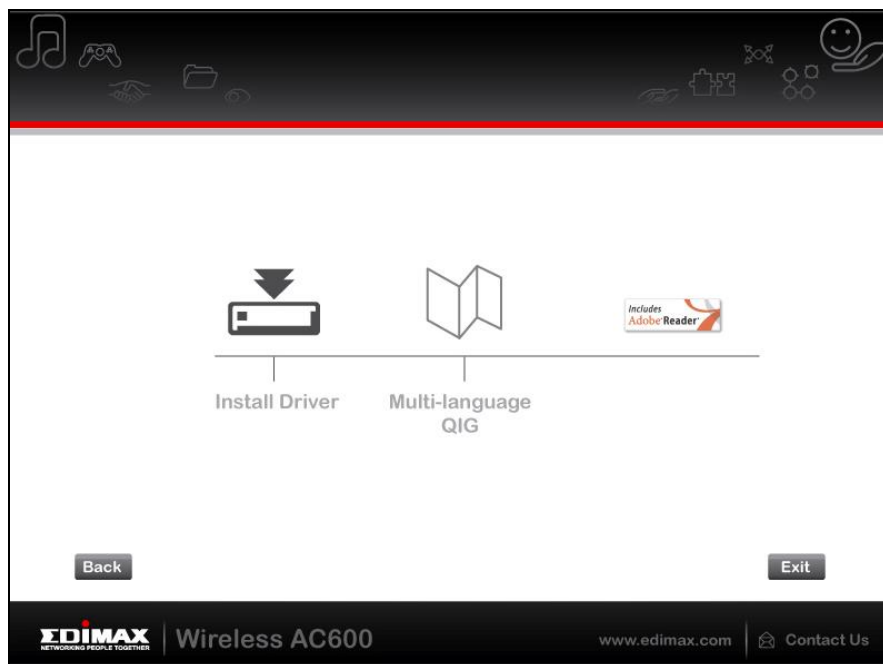
If the CD didn't auto-run, please open the "AutoRun" folder and execute "Autorun.exe" file to start the setup wizard.



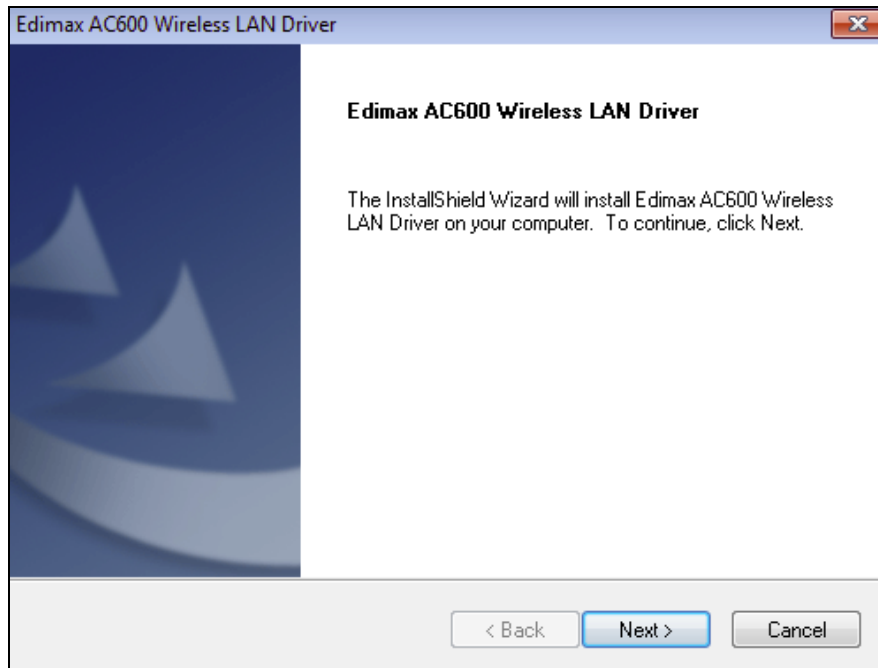
1. Click the EW-7811USC wireless USB adapter to continue.



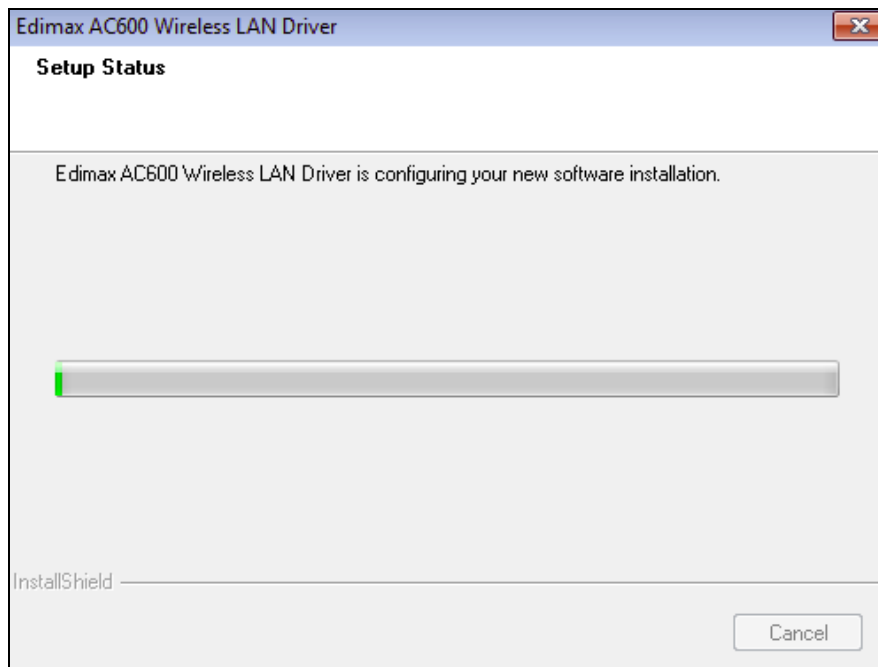
2. Click "Install Driver" to install the drivers for your EW-7811USC.



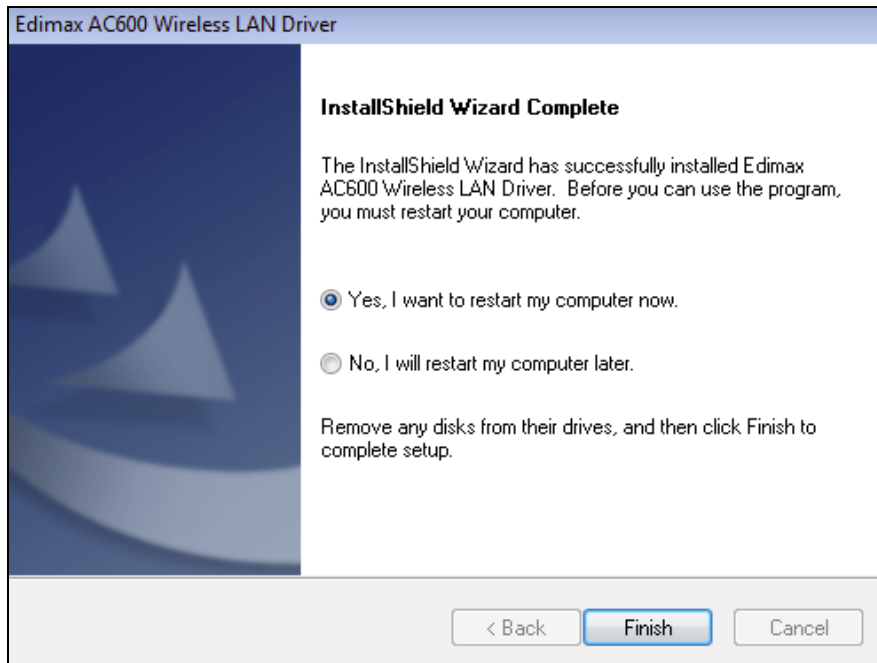
3. Please wait until the installation wizard is ready and then click “Next” to continue.



4. Please wait while the driver is installing.



- 5.** Before you can use the wireless adapter, you need to restart your computer. When the installation is complete you will be asked to choose whether you wish to restart your computer now or later. Click “Finish” to continue.

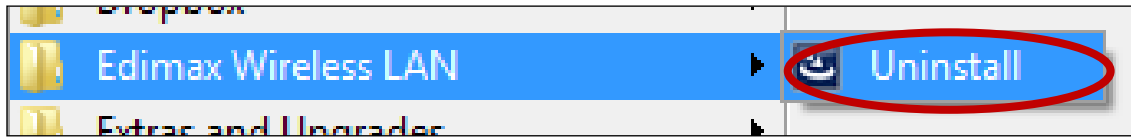


- 6.** After you restart your computer, your EW-7811USC will be installed and fully functional. Please disable any other wireless adapters as described in **VI. Disabling Network Adapters**. Then, Windows users can connect to an available Wi-Fi network as usual. For guidance on doing so, please refer to **VII. Using The Adapter**.

III-2. Driver Uninstallation

III-2-1. Windows XP/Vista/7

1. Go to **Start > Programs > Edimax Wireless LAN > Uninstall**



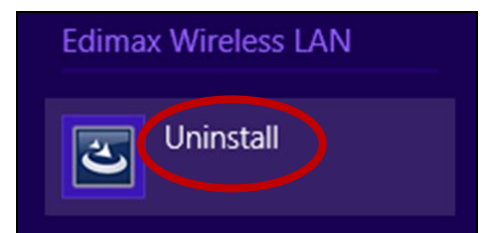
2. Follow the on screen instructions. An uninstall wizard will guide you through the process.

III-2-2. Windows 8/8.1

1. Right click anywhere on the “Start” screen and then click the “All apps” icon in the bottom right corner.



2. Locate the Edimax Wireless LAN category, select “Uninstall” and follow the on-screen instructions.



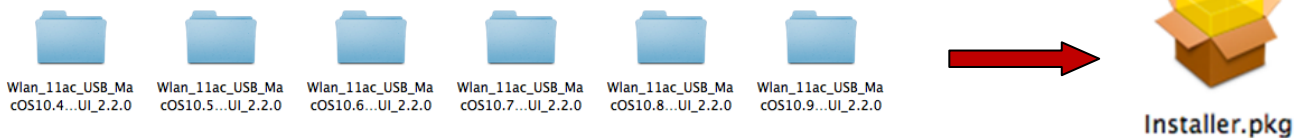
IV. Mac OS

IV-1. Driver Installation

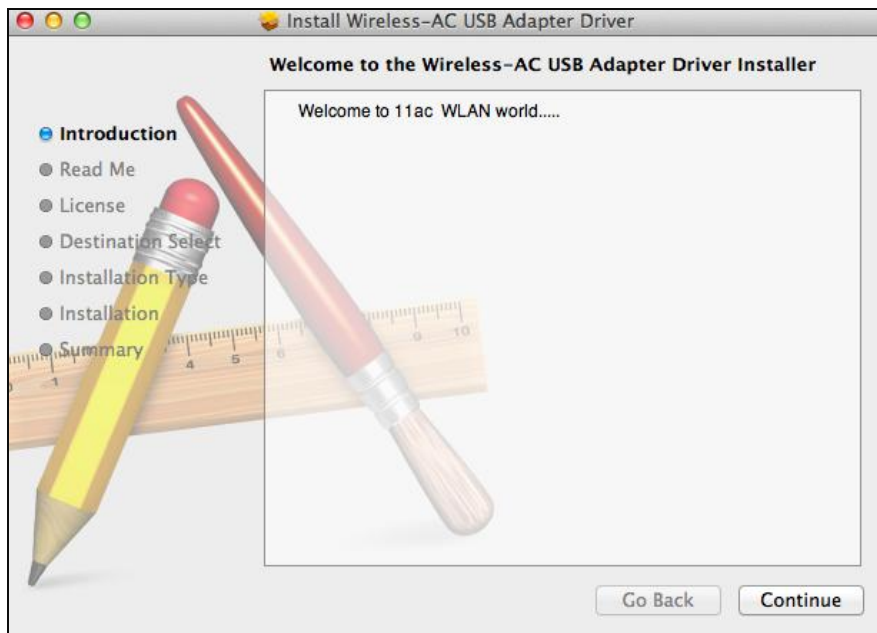


Ensure you select the correct folder for your version of Mac OS. To check your version of Mac OS, click the Apple logo in the top left corner of your desktop and go to “About This Mac”.


1. Open the “Wlan_11ac_USB_MacOS10...” folder for your version of Mac OS X (10.4 - 10.9) and double click the “Installer.pkg” file to open the driver installation wizard.

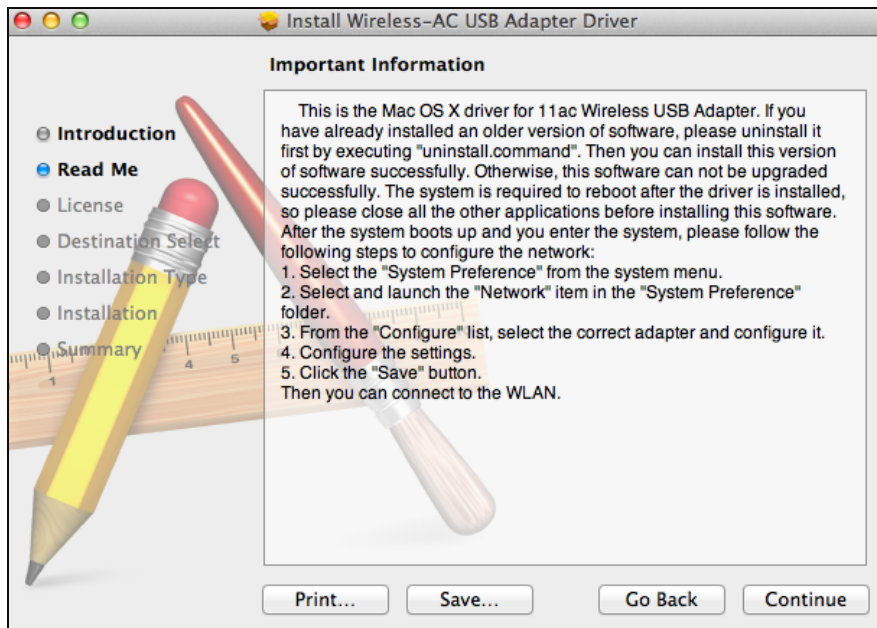


2. Click “Continue” to proceed to the next step.

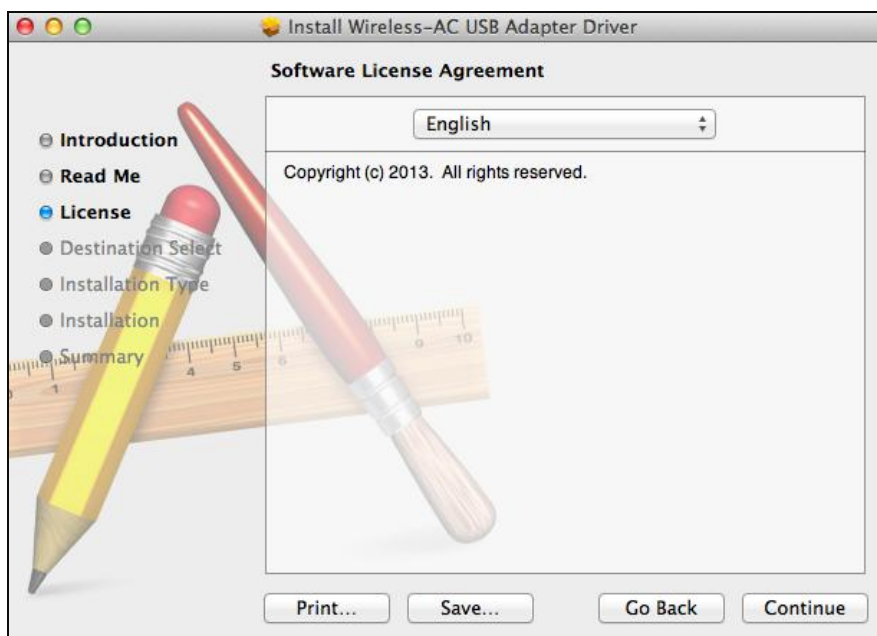


3. The next screen displays important information, please read it carefully (after the driver is installed, you need to enable the wireless adapter in “System Preferences → Network”. You can click “Print” or “Save” to print/save this information if you need or the instructions are repeated in **Step. 13**) Click “Continue” when you are ready to continue.

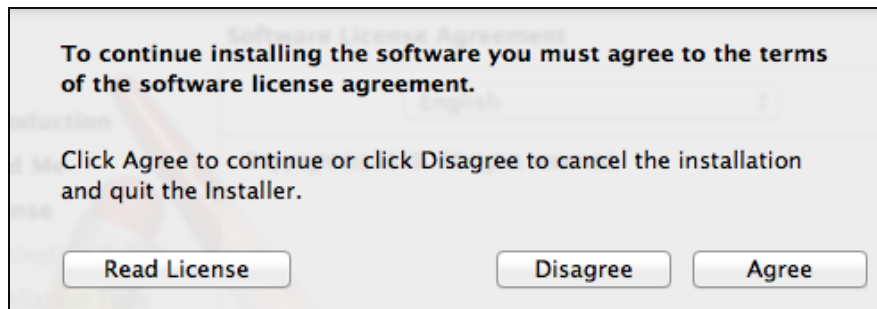
 **If you have already have an older version of the software installed on your computer, please uninstall it before you continue.**



4. Select a language (the default language is English) and click “Continue” to install the driver.



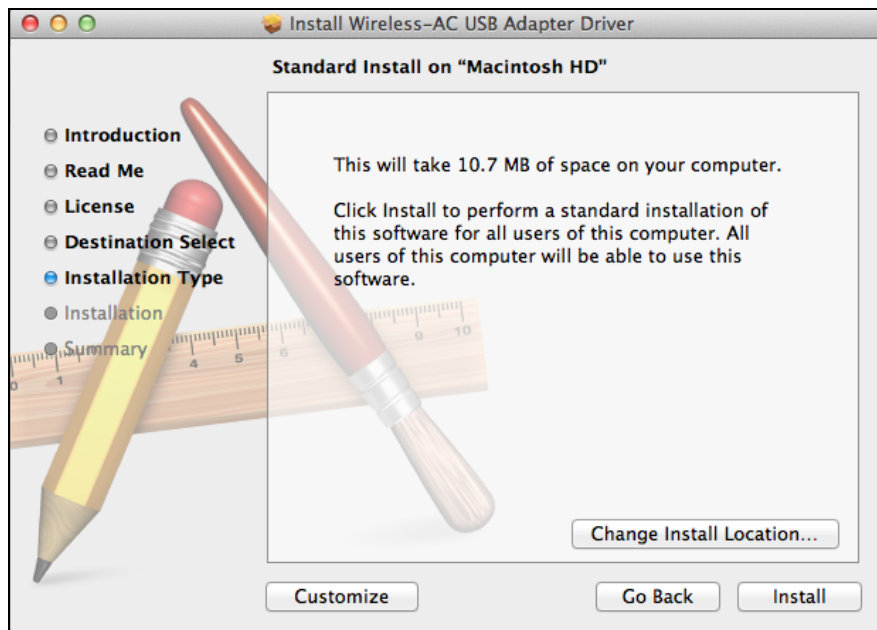
5. To read the software license click “Read License” and then click “Agree” to confirm you agree to the terms. You must agree to the terms to continue installing the software.



6. If prompted, select which user to install the software for and click “Continue”.



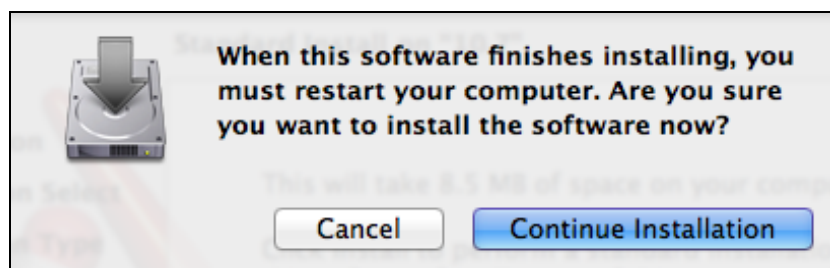
7. Click “Install” to install the driver.



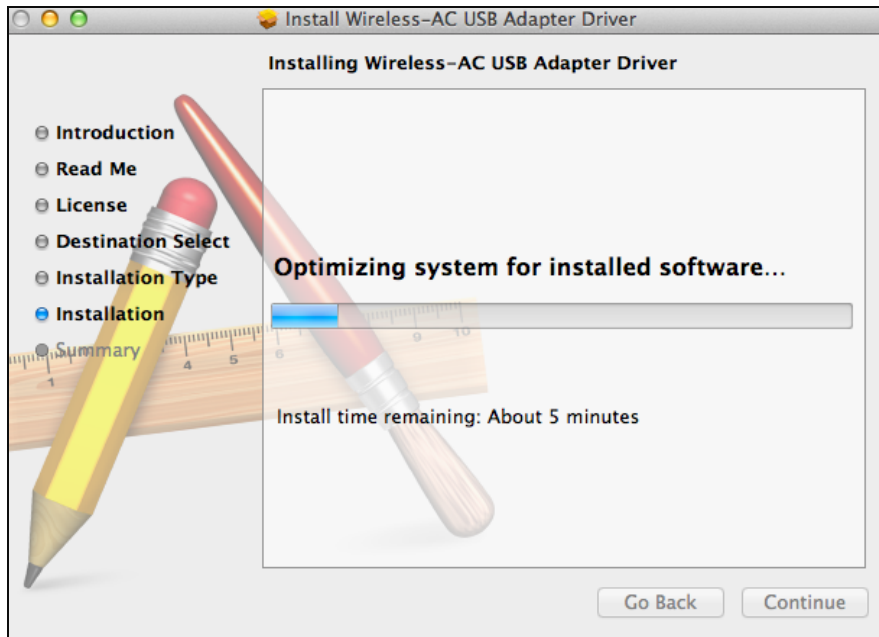
8. You may be prompted to enter your system/administrative password before the installation can begin. Enter your password and click “Install Software”.



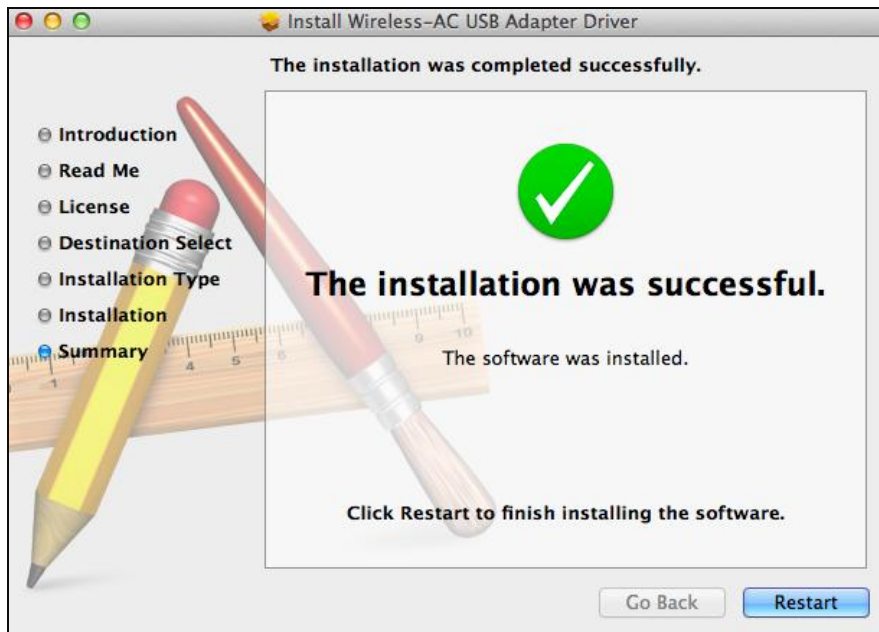
9. You will be prompted that you must restart your computer when the installation is complete. Click “Continue Installation” to proceed.




10. Please wait while the driver is installing.

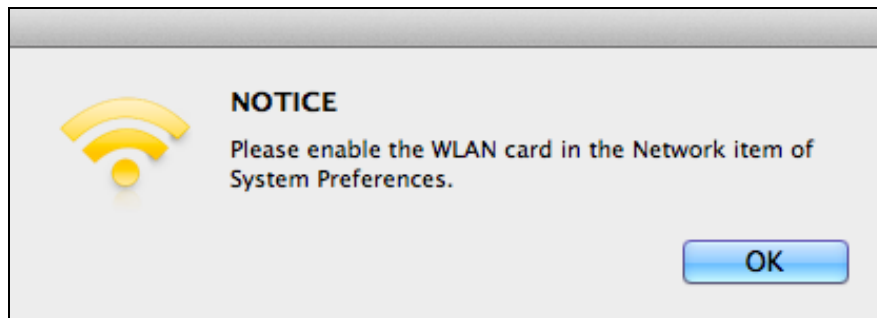


11. When the installation is complete, you will see the following screen informing you that "The installation was successful." Click "Restart" to restart your computer.

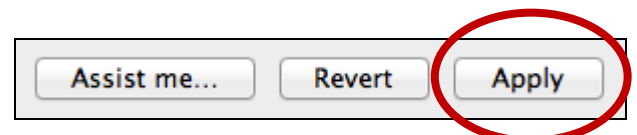
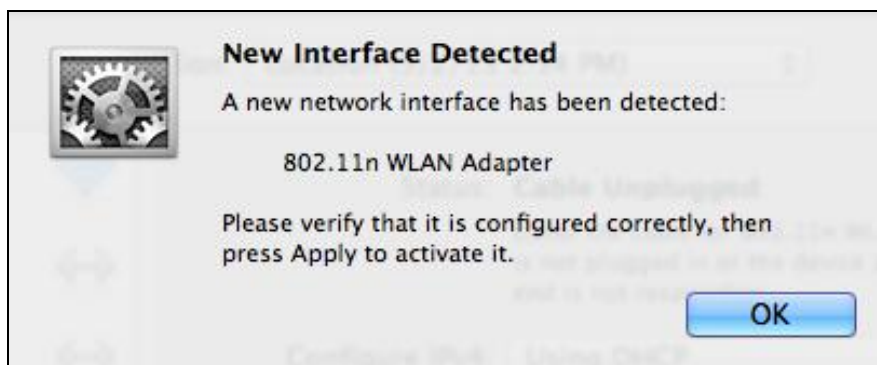


12. When the adapter is connected to your computer (after your system has restarted) the wireless utility will open automatically. However if you see the notice below then you need to activate the adapter in “System Preferences → Network” as mentioned previously in **IV-1. Driver Installation** Step 3.

 *If the utility doesn't open, you can open it from the “Applications” menu in your Mac.*



13. Go to “System Preferences → Network” and a pop up window will display that a new interface has been detected. Click “OK” to close the window and then click “Apply” in the bottom right corner of the “Network” panel.



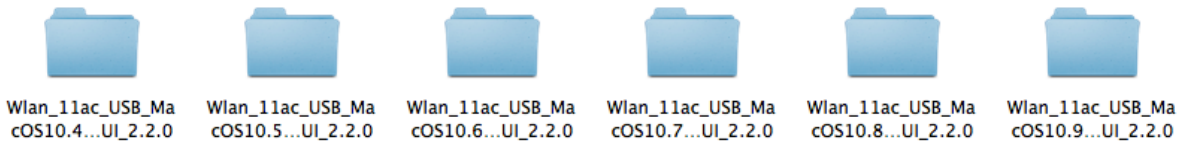
14. Next, please disable any other wireless adapters as described in **VI. Disabling Network Adapters**. Then Mac users can connect to a Wi-Fi network using the included utility software. For guidance on doing so, please refer to **VII. Using The Adapter**.

IV-2. Driver Uninstallation



Ensure you select the correct folder for your version of Mac OS. To check your version of Mac OS, click the Apple logo in the top left corner of your desktop and go to “About This Mac”.


- 1.** Open the “Wlan_11ac_USB_MacOS10...” folder for your version of Mac OS X (10.4 - 10.9).



- 2.** Double click the “Uninstall.command” file and follow the on-screen instructions.



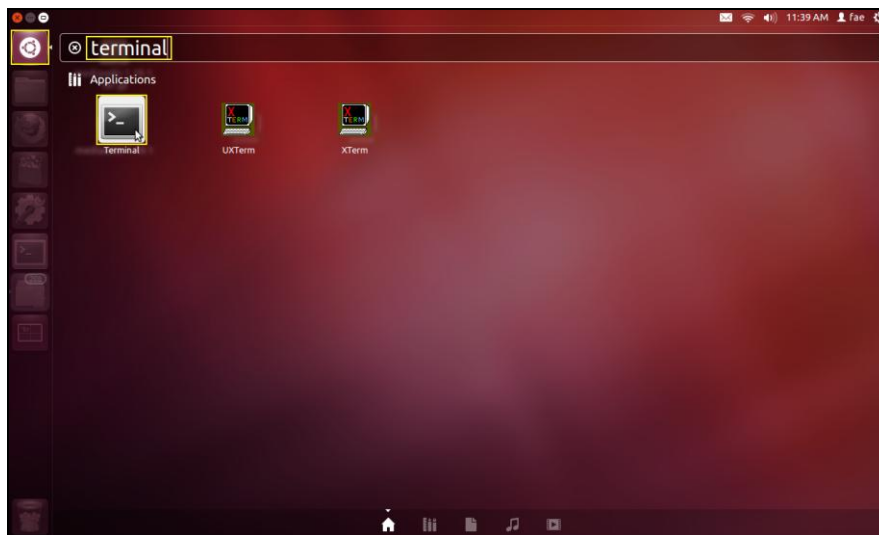
V. Linux

 **The following instructions are an example of Linux setup using Ubuntu 12.04. The process may vary according to your operating system.**

V-1. Driver Installation

 **An active Internet connection is required for Linux driver installation.**

1. Ensure that your computer is connected to the Internet.
2. Click on “Dash Home” and then type “terminal”. Click the “terminal” icon.



3. Execute the command below to download the packet that is necessary to build the driver.

sudo apt-get install build-essential

Type the password for the administrator, and then type “y” to install the gcc packet.

```
test@ubuntu: ~  
test@ubuntu:~$ sudo apt-get install build-essential  
[sudo] password for test:
```

4. Change to the “Home” directory and type the command below (where “test” is your login username):

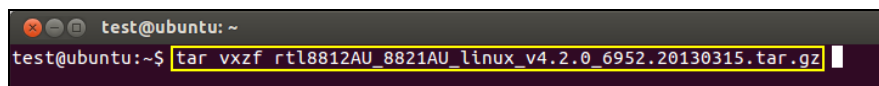
```
cd /home/test
```



```
test@ubuntu:~  
test@ubuntu:~$ cd /home/test/
```

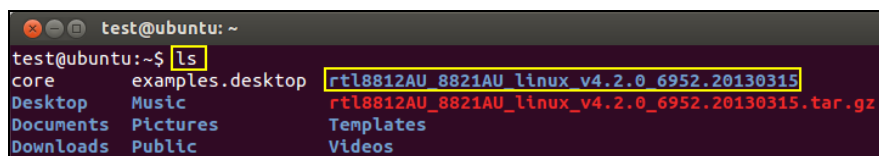
5. Extract the driver using the command below:

```
tar vxzf rtl8812AU_linux_v4.2.0_6952.20130315.tar.gz
```



```
test@ubuntu:~  
test@ubuntu:~$ tar vxzf rtl8812AU_8821AU_linux_v4.2.0_6952.20130315.tar.gz
```

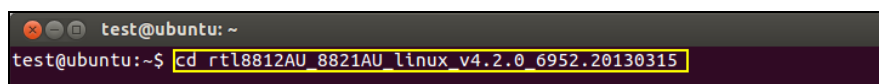
6. Check the extracted file with the command “ls”:



```
test@ubuntu:~  
test@ubuntu:~$ ls  
core          examples.desktop  rtl8812AU_8821AU_linux_v4.2.0_6952.20130315  
Desktop       Music             rtl8812AU_8821AU_linux_v4.2.0_6952.20130315.tar.gz  
Documents     Pictures          Templates  
Downloads     Public           Videos
```

7. Change to the driver folder and execute the command below:

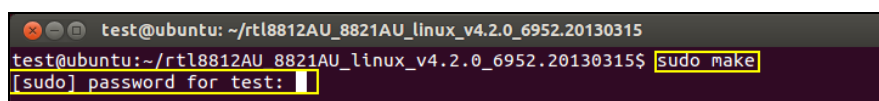
```
cd rtl8812AU_8821AU_linux_v4.2.0_6952.20130315
```



```
test@ubuntu:~  
test@ubuntu:~$ cd rtl8812AU_8821AU_linux_v4.2.0_6952.20130315
```

8. Build the driver. Execute the command below and then input the password.

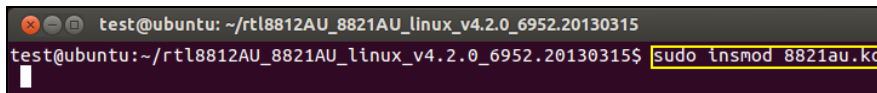
```
sudo make
```



```
test@ubuntu:~/rtl8812AU_8821AU_linux_v4.2.0_6952.20130315  
test@ubuntu:~/rtl8812AU_8821AU_linux_v4.2.0_6952.20130315$ sudo make  
[sudo] password for test:
```

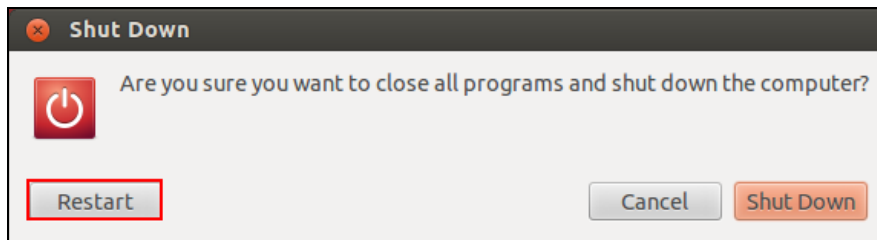
9. Execute the command below to load the driver.

sudo insmod 8821au.ko

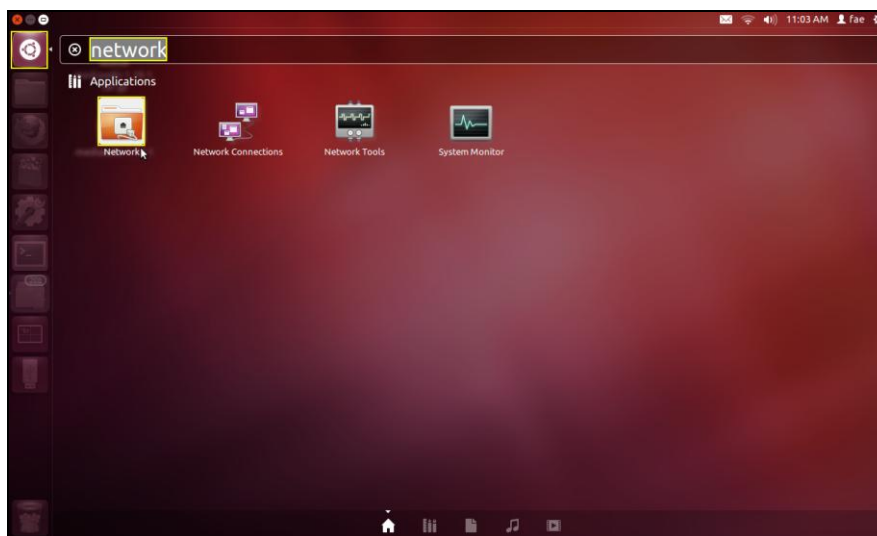


```
test@ubuntu: ~/rtl8812AU_8821AU_linux_v4.2.0_6952.20130315
test@ubuntu:~/rtl8812AU_8821AU_linux_v4.2.0_6952.20130315$ sudo insmod 8821au.ko
```

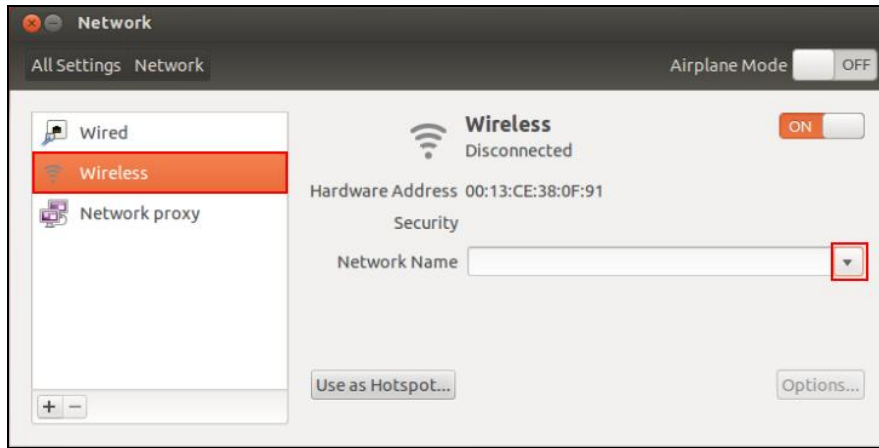
10. Plug the EW-7811USC into your computer and press “Restart”.



11. When Ubuntu has restarted, click on “Dash Home” and then type “network”. Click on the “network” icon as below.



12. Click on “Wireless” and then click the icon to open the drop-down menu labeled “Network Name”. Select the network you wish to connect to and enter the necessary security information.

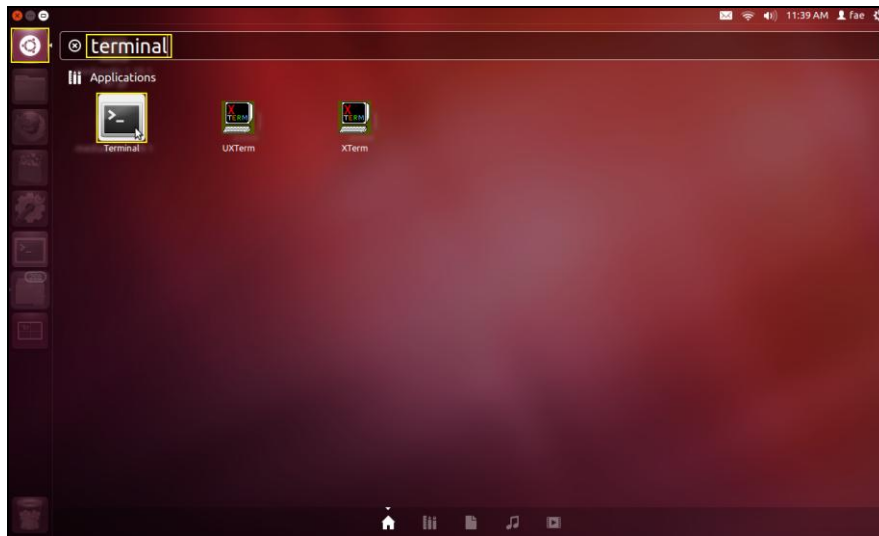


13. The “Network” screen will display “Connected” to indicate a connection has been established, as shown below.



V-1. Driver Uninstallation

1. Click on “Dash Home” and then type “terminal”. Click the “terminal” icon.



2. Switch to the directory:

```
cd /home/test/rtl8812AU_8821AU_linux_v4.2.0_6952.20130315/
```

3. Execute the following command to uninstall the driver:

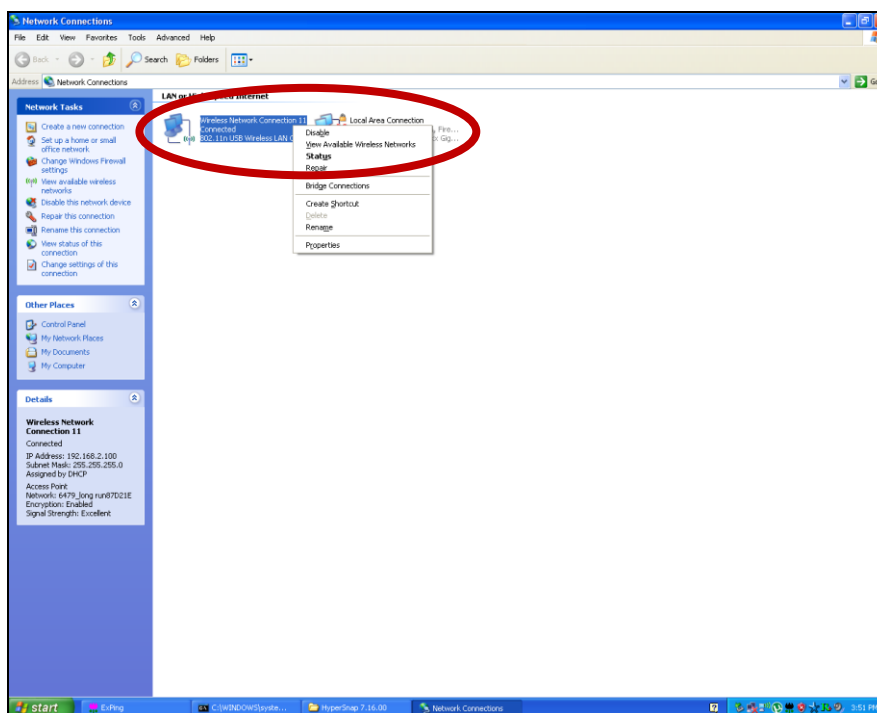
```
sudo make clean
```

VI. Disabling Network Adapters

To ensure that your USB wireless adapter can function correctly, it is recommended that you disable any other existing wireless network adapters installed on your computer. If you are unsure how to do so, you can refer to the user manual for your computer, or follow the guidance below.

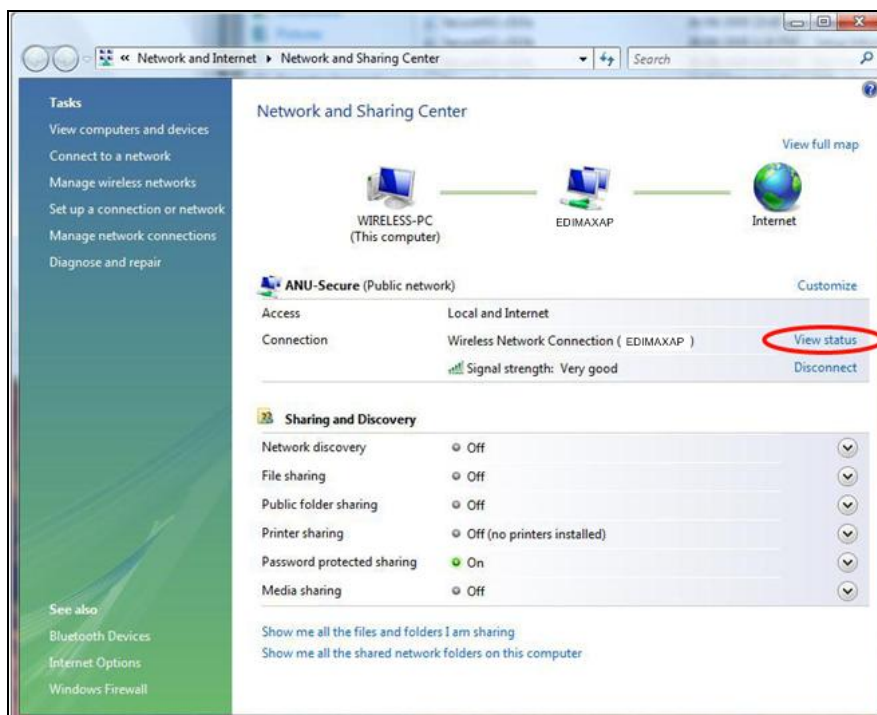
V-1. Windows XP

Go to **Start > Control Panel > Network Connections**. Right click your wireless adapter and then select **“Disable”**.



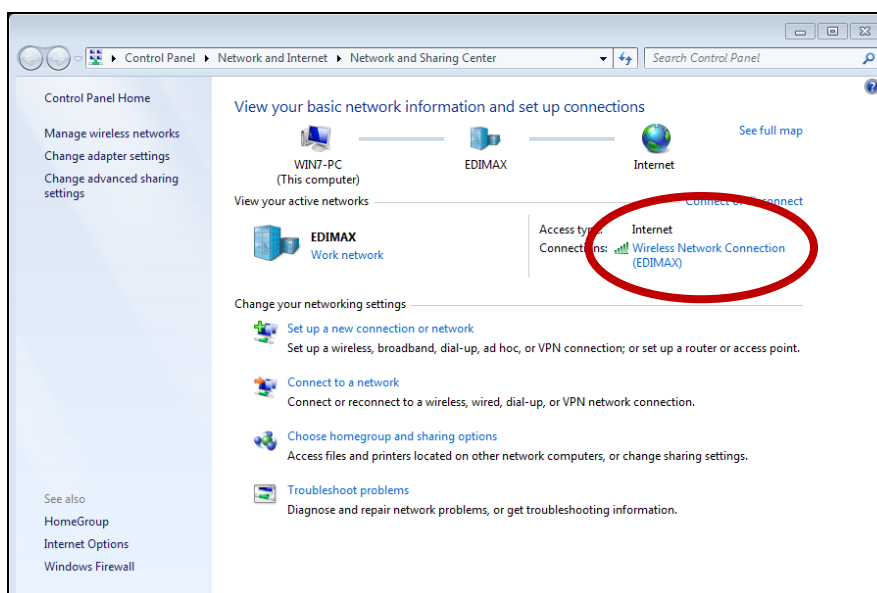
VI-2. Windows Vista

Go to **Start > Control Panel**. Click **View network status and tasks > View Status** and click **Disable**.



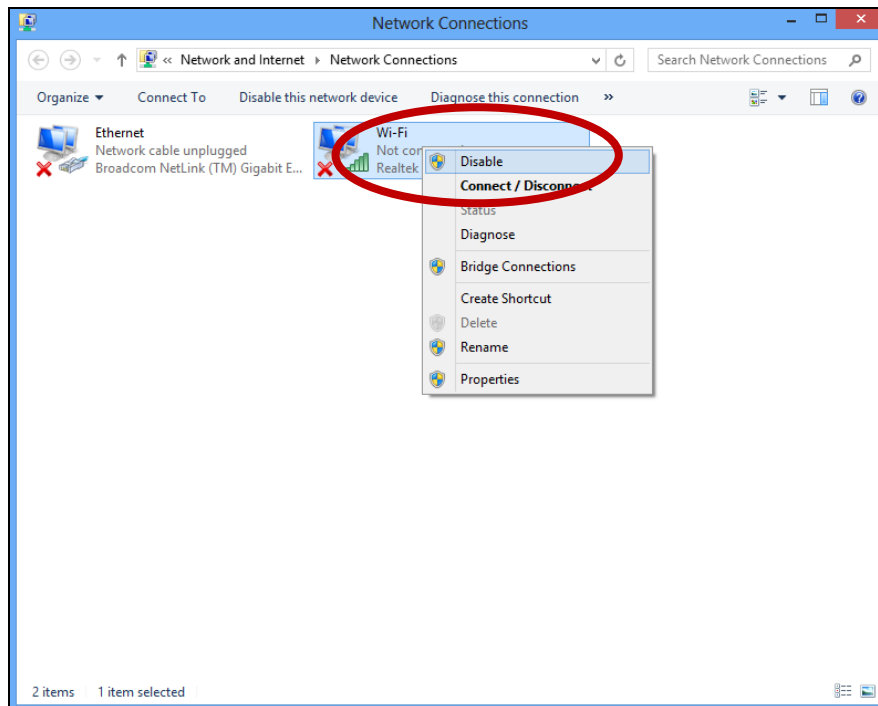
VI-3. Windows 7

Go to **Start > Control Panel**. Click **View network status and tasks > Wireless Network Connection** and click **Disable**.



VI-4. Windows 8/8.1

1. Switch to desktop mode by clicking your cursor in the bottom left of the Windows 8 Start screen. Then go to **File Explorer** > (right click) **Network** > **Properties** > **Change adapter settings**.
2. Right click your wireless adapter and then select “**Disable**”.

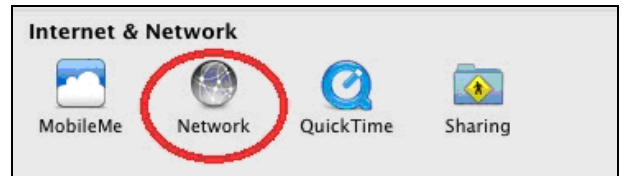


VI-5. Mac

1. Select “System Preferences” from the dock.



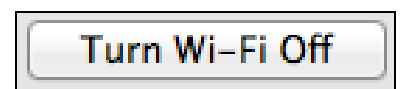
2. In “System Preferences”, select “Network”.



3. All of your network connections will be displayed, as shown below. Select “Wi-Fi” from the left panel.



4. Click “Turn Wi-Fi” off in the main panel.

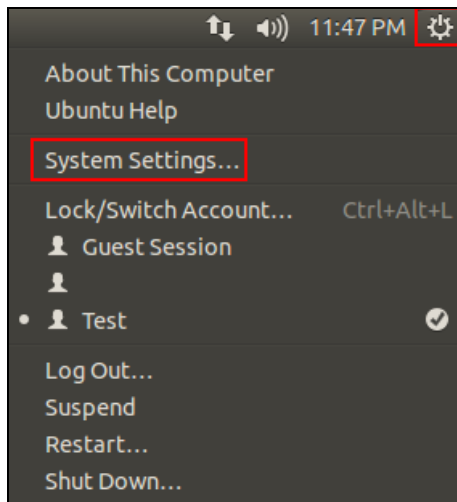


VI-6. Linux

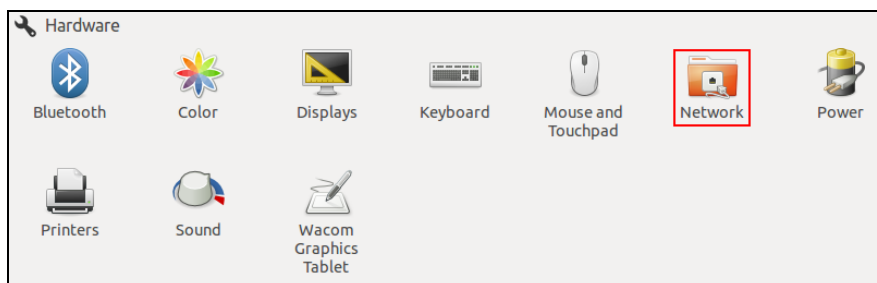


The following instructions are an example of Linux using Ubuntu 12.04. The process may vary according to your operating system.

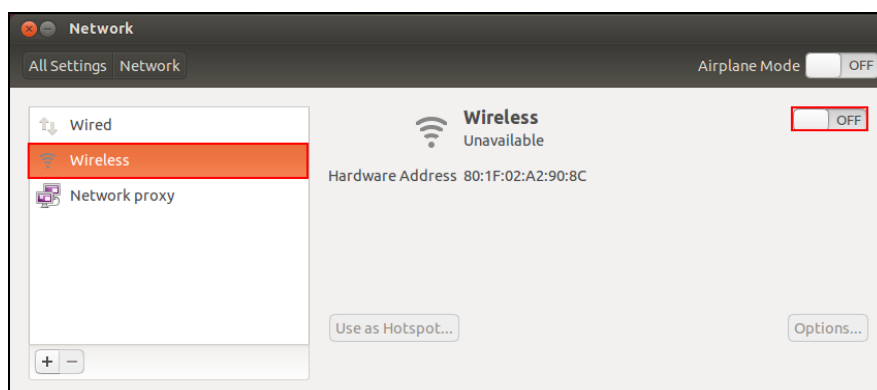
1. Click the icon in the top right corner (shown below) and select “System Settings” from the menu.



2. On the next screen, double click “Network” listed under “Hardware”.



3. Select a wireless adapter from the left panel, and then click the “ON/OFF” button on the right side to disable it.



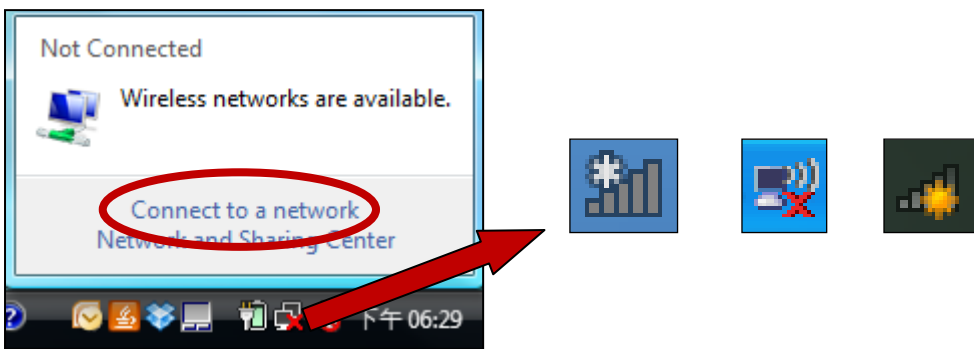
VII. Using The Adapter

After you have installed the driver and if necessary disabled other wireless adapters (see VI. **Disabling Network Adapters**), Windows users can connect to a Wi-Fi network as usual (see below). Mac users need to connect to a Wi-Fi network using the included utility software, as described in VII-2. **Mac**.

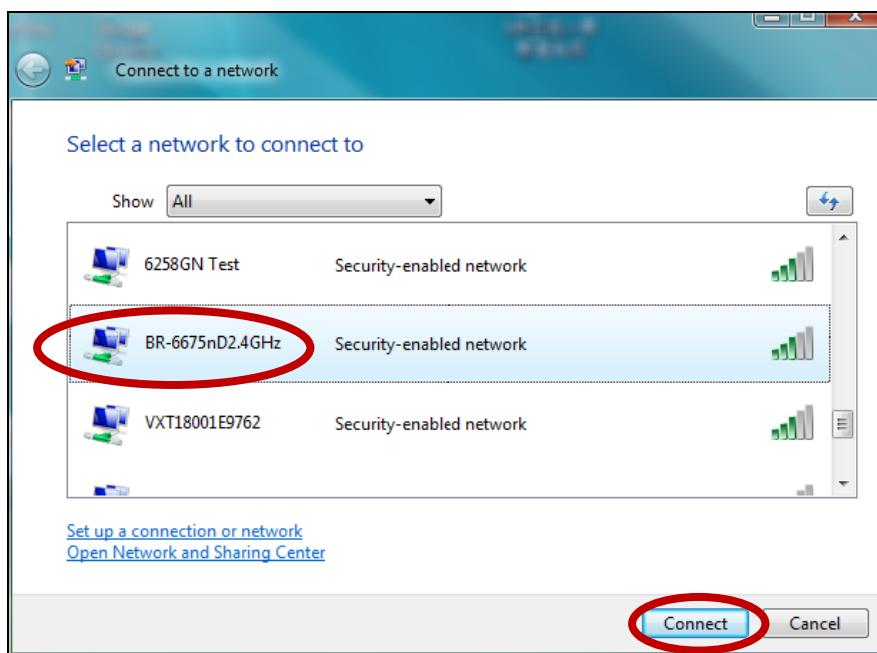
VII-1. Windows

Below is an example of how to connect using Windows Vista - the process may vary slightly for other versions of Windows.

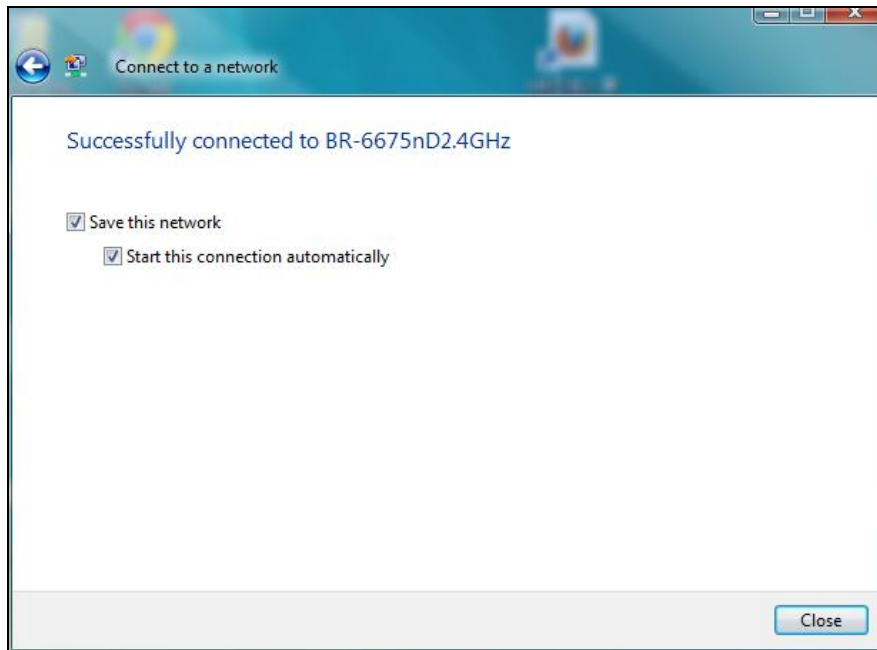
1. Click the network icon (examples below) in the system tray and select "Connect to a network".



2. Search for the SSID of your Wi-Fi network and then click "Connect". If you set a password for your network, you will then be prompted to enter it.



3. After correctly entering your password, you will be successfully connected to your Wi-Fi network.



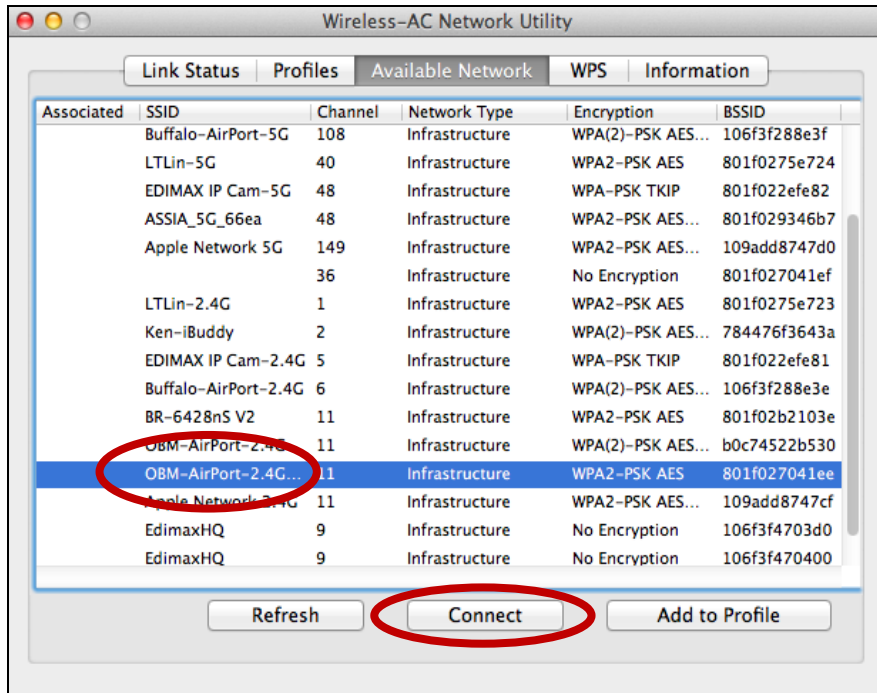
VII-2. Mac: Connect to a Wi-Fi network

1. The wireless utility will open automatically when the adapter is connected to your computer.

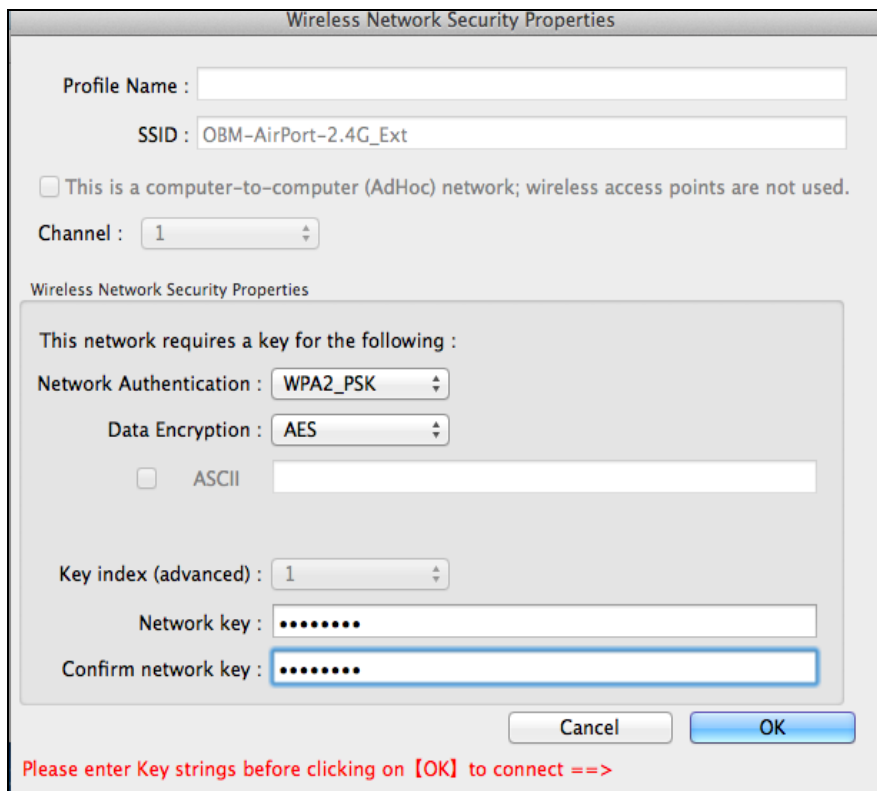


If the utility doesn't open, you can open it from the "Applications" menu in your Mac.

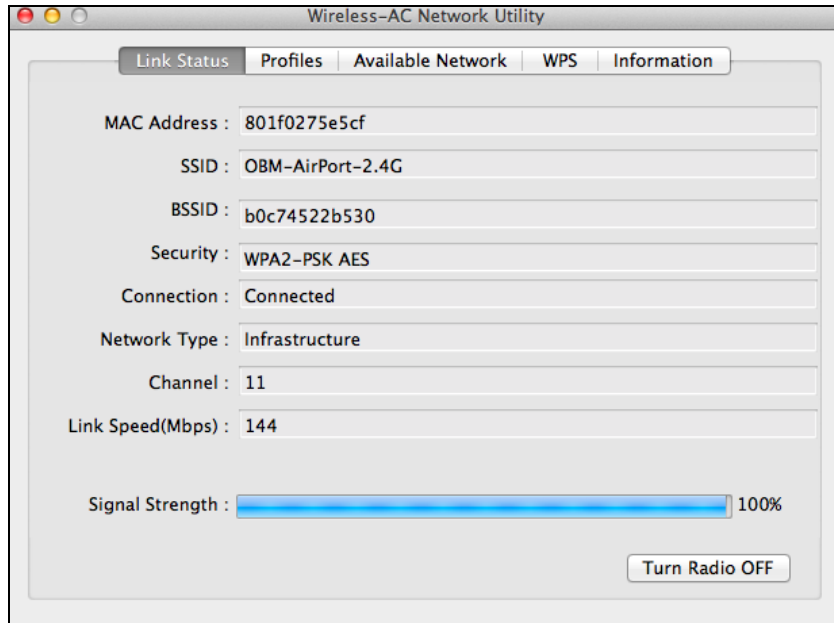
2. Click the "Available Network" tab in the wireless utility. Select a Wi-Fi network to connect to and click "Connect".



3. Enter the password (network key) for the Wi-Fi network, confirm the password (network key) again below and click “OK”.



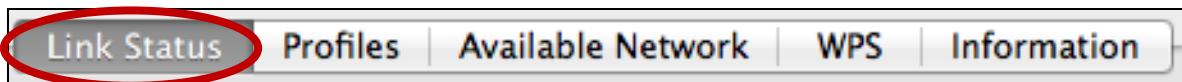
4. After entering your password, you will be successfully connected to your Wi-Fi network. A summary of the connection will be displayed on the “Link Status” page, as shown below.



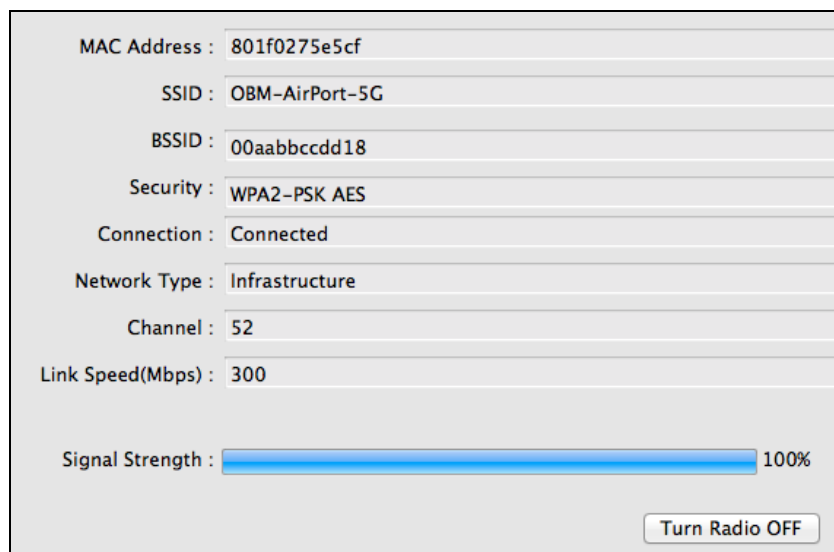
VII-3. Mac: Wireless Utility

The wireless utility offers features to monitor and configure your connection. Navigate the wireless utility using the menu across the top of the window.

VII-3-1. Link Status

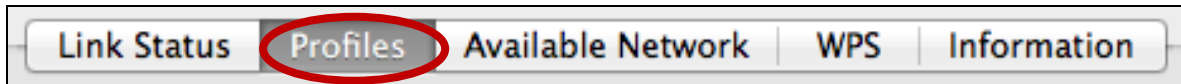


The “Link Status” page displays information about the current wireless connection.

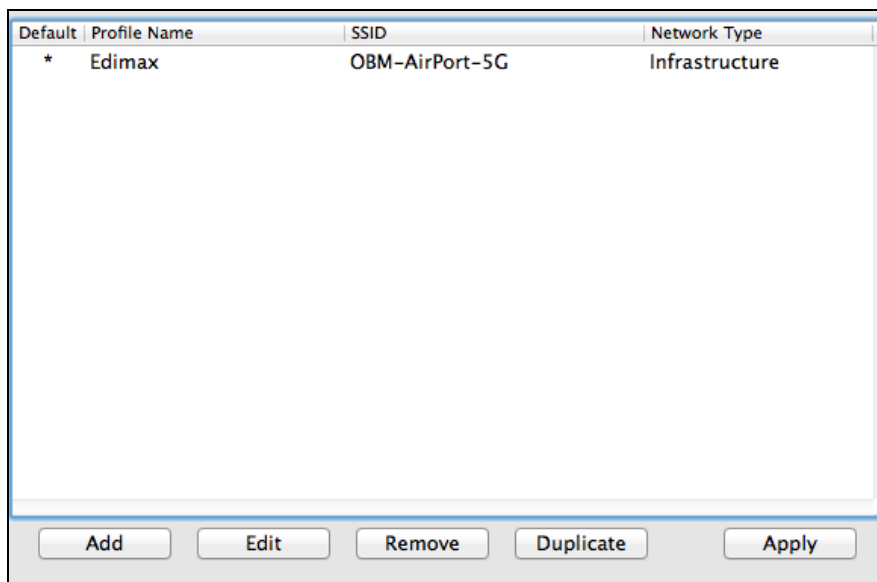


Turn Radio OFF	Switch off the adapter’s wireless radio.
-----------------------	--

VII-3-2. Profiles



The “Profiles” screen allows you to save different Wi-Fi connection settings as “Profiles”. Existing profiles are listed in the “Profile List”.




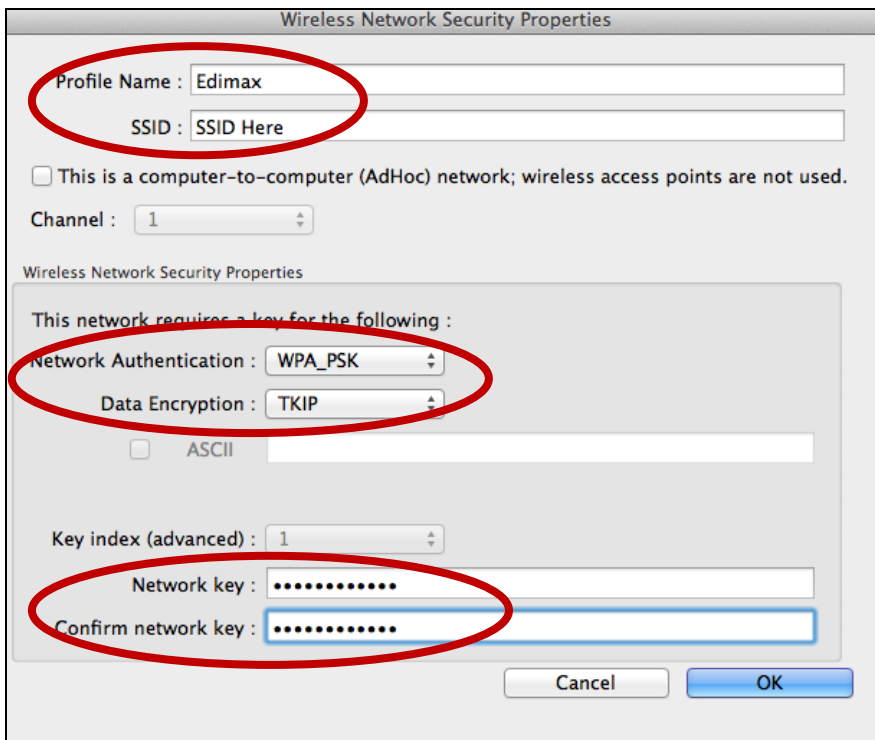
Add	Opens a new window to manually add a new profile.
Edit	Edit an existing profile.
Remove	Remove an existing (selected) profile.
Duplicate	Duplicate selected profile.
Apply	Save any changes.

Add a Profile

When you select “Add”, a new window will open. Enter a profile name and SSID, along with security information, and then click “OK”.

 **You can also add a new profile from the “Available Network” screen.**

 **AdHoc networks are also supported – check the box labeled “This is a computer-to-computer (AdHoc network)...” and select a channel.**



Profile Name	Enter a reference name for the profile.
SSID	Manually enter the SSID to be used for this profile.
Network Authentication	Select the type of network authentication used by the specified SSID.
Data Encryption	Select the type of data encryption used by the specified SSID.
Network Key	Enter the network key/password for the specified SSID.
Confirm Network Key	Confirm the network key/password for the specified SSID.

VII-3-3. Available Network



The “Available Network” screen displays a list of all available Wi-Fi networks within range along with various categories of information about each network.

Associated	SSID	Channel	Network Type	Encryption	BSSID
	EdimaxHQ_5G	44	Infrastructure	No Encryption	106f3f470418
	EdimaxHQ_5G	44	Infrastructure	No Encryption	106f3f470408
	EdimaxHQ_5G	44	Infrastructure	No Encryption	106f3f4703d8
	CELENOF8F1A5	60	Infrastructure	WPA2-PSK AES	001f1ff8f1a5
	Buffalo-AirPort-5G	108	Infrastructure	WPA(2)-PSK AES...	106f3f288e3f
	EdimaxHQ_5G	40	Infrastructure	No Encryption	001020304058
	LTLin-5G	40	Infrastructure	WPA2-PSK AES	801f0275e724
	ASSIA_5G_66ea	48	Infrastructure	WPA2-PSK AES...	801f029346b7
	Apple Network 5G	149	Infrastructure	WPA2-PSK AES...	109add8747d0
	EDIMAX IP Cam-5G	48	Infrastructure	WPA-PSK TKIP	801f022efe82
	logitec2nd52	11	Infrastructure	WEP	02018e40d5b8
	logitec11a52	36	Infrastructure	WPA(2)-PSK AES...	00018e40d5ba
	Belkin.b37.media	149	Infrastructure	WPA2-PSK AES	ec1a59832b37
	logitec52	11	Infrastructure	WPA(2)-PSK AES...	00018e40d5b8
	MEETING_ROOM_6F	1	Infrastructure	No Encryption	001f1f1f73fc
	EdimaxHQ	9	Infrastructure	No Encryption	001020304050

Refresh	Refresh the list of available wireless networks.
Connect	Connect to a selected wireless network.
Add to Profile	Use a selected wireless network to create a new profile (see VII-3-2. Profiles).

VII-3-4. WPS

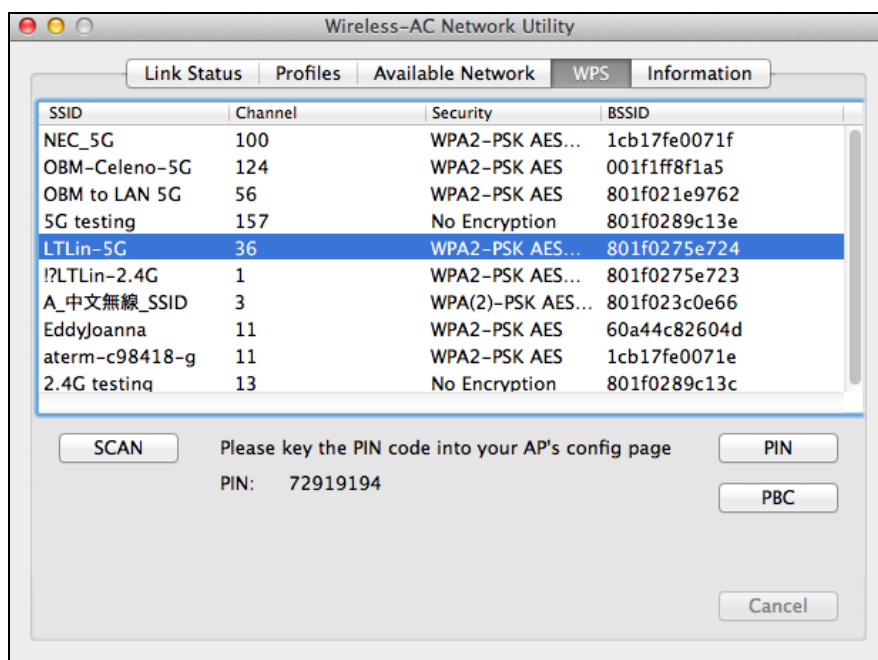


Wi-Fi Protected Setup is a simple, alternative way to establish connections between WPS compatible devices. Most modern wireless network devices feature a built-in WPS button, which activates WPS on that device. When WPS is activated in the correct manner and at the correct time for two compatible devices, they will automatically connect to each other.

WPS can also be activated via a device's web user interface, which has the same effect as physically pushing the WPS button (known as PBC or "push button configuration").

PIN code WPS is an additional variation of WPS which can be activated from a device's web user interface, and includes the use of a PIN code between the two devices for identification and verification.

The "WPS" page displays information about Wireless Protected Setup (WPS), including a list of available WPS access points. Instructions to set up PBC WPS and PIN code WPS are included below, followed by a description of each item on this page:



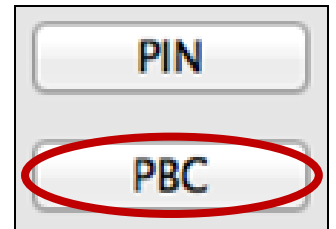
PBC: Push Button Configuration

PBC WPS can be executed from this page by following the steps below:

1. Press the WPS button on your **wireless router/access point** for the correct length of time to activate its WPS.

 ***Please check the instructions for your wireless device for how long you need to hold down its WPS button to activate WPS.***


2. **Within two minutes**, click the “PBC” button in the bottom left of the “WPS” page. The wireless adapter will establish a connection with your wireless router/access point.

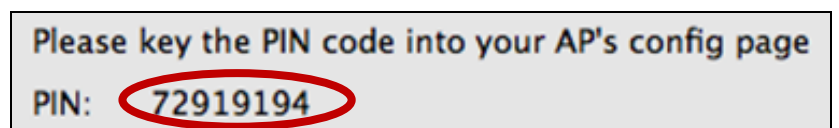


PIN Code WPS

PIN code WPS includes the additional use of a PIN code between devices. This is useful for identification and verification purposes in crowded wireless environments with multiple routers/access points/wireless devices.

1. The wireless adapter’s PIN code is listed in the lower centre of the “WPS” page next to “PIN”. Go to your wireless router/access point’s web user interface and input the wireless adapter’s PIN code in the correct location, and activate PIN code WPS for your wireless router/adapter.

 ***Please check the instructions for your wireless router/access point for how to access the web user interface and where to input the PIN code.***



2. **Within two minutes**, select your wireless/router/access point from the “WPS AP” list as shown below, and then click the “PIN” button in the

bottom left of the “WPS” page. The wireless adapter will establish a connection with your wireless router/access point.

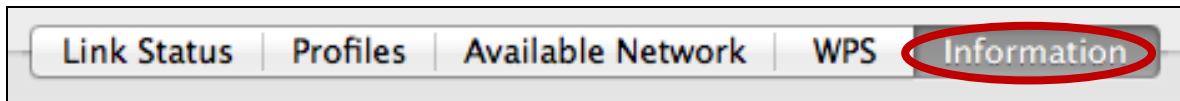
SSID	Channel	Security	BSSID
NEC_5G	100	WPA2-PSK AES...	1cb17fe0071f
OBM-Celena-5G	124	WPA2-PSK AES	001f1ff8f1a5
OBM to LAN 5G	56	WPA2-PSK AES	801f021e9762
5G testing	157	No Encryption	801f0289c13e
LTLin-5G	36	WPA2-PSK AES...	801f0275e724
!LTLin-2.4G	1	WPA2-PSK AES...	801f0275e723
A_中文無線_SSID	3	WPA(2)-PSK AES...	801f023c0e66
EddyJoanna	11	WPA2-PSK AES	60a44c82604d
aterm-c98418-g	11	WPA2-PSK AES	1cb17fe0071e
2.4G testing	13	No Encryption	801f0289c13c



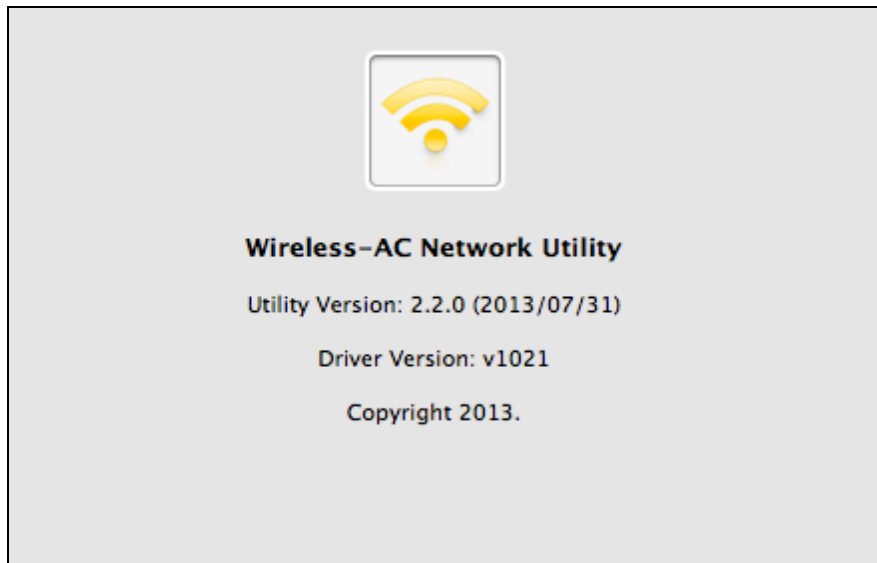
Below is a general description of items on the “WPS” page:

Scan	Refresh the list of available wireless networks.
PIN	Activate PIN code WPS on the wireless adapter for two minutes.
PBC	Activate Push Button Configuration (PBC) WPS on the wireless adapter for two minutes.

VII-3-5. Information



The “Information” screen displays various information such as wireless utility version and driver version.



VII-4. WPS Setup

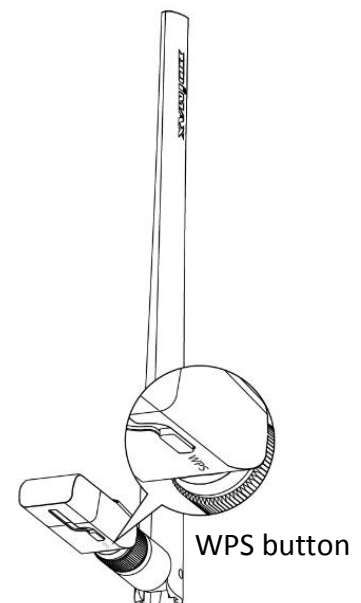
If your wireless router/access point supports Wi-Fi Protected Setup (WPS) then you can use this method to connect to a Wi-Fi network.

1. Press the WPS button (often the WPS/Reset button) on your router/access point to activate WPS.



Please check the instructions for your wireless router/access point for how long you need to hold down its WPS button to activate WPS.

2. Within two minutes, press the WPS button on the EW-7811USC to activate its WPS.
3. The devices will establish a connection.



COPYRIGHT

Copyright © Edimax Technology Co., Ltd. all rights reserved. No part of this publication may be reproduced, transmitted, transcribed, stored in a retrieval system, or translated into any language or computer language, in any form or by any means, electronic, mechanical, magnetic, optical, chemical, manual or otherwise, without the prior written permission from Edimax Technology Co., Ltd.

Edimax Technology Co., Ltd. makes no representations or warranties, either expressed or implied, with respect to the contents hereof and specifically disclaims any warranties, merchantability, or fitness for any particular purpose. Any software described in this manual is sold or licensed as is. Should the programs prove defective following their purchase, the buyer (and not this company, its distributor, or its dealer) assumes the entire cost of all necessary servicing, repair, and any incidental or consequential damages resulting from any defect in the software. Edimax Technology Co., Ltd. reserves the right to revise this publication and to make changes from time to time in the contents hereof without the obligation to notify any person of such revision or changes.

The product you have purchased and the setup screen may appear slightly different from those shown in this QIG. The software and specifications are subject to change without notice. Please visit our website www.edimax.com for updates. All brand and product names mentioned in this manual are trademarks and/or registered trademarks of their respective holders.

Federal Communication Commission Interference Statement

This equipment has been tested and found to comply with the limits for a Class B digital device, pursuant to Part 15 of FCC Rules. These limits are designed to provide reasonable protection against harmful interference in a residential installation. This equipment generates, uses, and can radiate radio frequency energy and, if not installed and used in accordance with the instructions, may cause harmful interference to radio communications. However, there is no guarantee that interference will not occur in a particular installation. If this equipment does cause harmful interference to radio or television reception, which can be determined by turning the equipment off and on, the user is encouraged to try to correct the interference by one or more of the following measures:

1. Reorient or relocate the receiving antenna.
2. Increase the separation between the equipment and receiver.
3. Connect the equipment into an outlet on a circuit different from that to which the receiver is connected.
4. Consult the dealer or an experienced radio technician for help.

FCC Caution

This device and its antenna must not be co-located or operating in conjunction with any other antenna or transmitter. This device complies with Part 15 of the FCC Rules. Operation is subject to the following two conditions: (1) this device may not cause harmful interference, and (2) this device must accept any interference received, including interference that may cause undesired operation. Any changes or modifications not expressly approved by the party responsible for compliance could void the authority to operate equipment.

Federal Communications Commission (FCC) Radiation Exposure Statement

This equipment complies with FCC radiation exposure set forth for an uncontrolled environment. In order to avoid the possibility of exceeding the FCC radio frequency exposure limits, human proximity to the antenna shall not be less than 2.5cm (1 inch) during normal operation.

Federal Communications Commission (FCC) RF Exposure Requirements

This EUT is compliance with SAR for general population/uncontrolled exposure limits in ANSI/IEEE C95.1-1999 and had been tested in accordance with the measurement methods and procedures specified in OET Bulletin 65 Supplement C. The equipment version marketed in US is restricted to usage of the channels 1-11 only. This equipment is restricted to *indoor* use when operated in the 5.15 to 5.25 GHz frequency range.

R&TTE Compliance Statement

This equipment complies with all the requirements of DIRECTIVE 1999/5/EC OF THE EUROPEAN PARLIAMENT AND THE COUNCIL of March 9, 1999 on radio equipment and telecommunication terminal equipment and the mutual recognition of their conformity (R&TTE). The R&TTE Directive repeals and replaces in the directive 98/13/EEC (Telecommunications Terminal Equipment and Satellite Earth Station Equipment) As of April 8, 2000.

Safety

This equipment is designed with the utmost care for the safety of those who install and use it. However, special attention must be paid to the dangers of electric shock and static electricity when working with electrical equipment. All guidelines of this and of the computer manufacture must therefore be allowed at all times to ensure the safe use of the equipment.

EU Countries Intended for Use

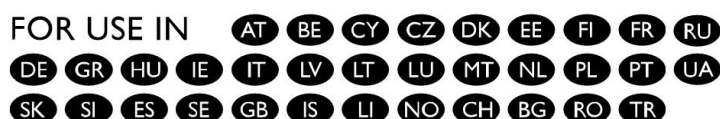
The ETSI version of this device is intended for home and office use in Austria, Belgium, Bulgaria, Cyprus, Czech, Denmark, Estonia, Finland, France, Germany, Greece, Hungary, Ireland, Italy, Latvia, Lithuania, Luxembourg, Malta, Netherlands, Poland, Portugal, Romania, Slovakia, Slovenia, Spain, Sweden, Turkey, and United Kingdom. The ETSI version of this device is also authorized for use in EFTA member states: Iceland, Liechtenstein, Norway, and Switzerland.

EU Countries Not Intended for Use

None

EU Declaration of Conformity

- English:** This equipment is in compliance with the essential requirements and other relevant provisions of Directive 1999/5/EC, 2009/125/EC.
- Français:** Cet équipement est conforme aux exigences essentielles et autres dispositions de la directive 1999/5/CE, 2009/125/CE.
- Čeština:** Toto zařízení je v souladu se základními požadavky a ostatními příslušnými ustanoveními směrnic 1999/5/ES, 2009/125/ES.
- Polski:** Urządzenie jest zgodne z ogólnymi wymaganiami oraz szczególnymi warunkami określonymi Dyrektywą UE 1999/5/EC, 2009/125/EC.
- Română:** Acest echipament este în conformitate cu cerințele esențiale și alte prevederi relevante ale Directivei 1999/5/CE, 2009/125/CE.
- Русский:** Это оборудование соответствует основным требованиям и положениям Директивы 1999/5/EC, 2009/125/EC.
- Magyar:** Ez a berendezés megfelel az alapvető követelményeknek és más vonatkozó irányelveknek (1999/5/EK, 2009/125/EC).
- Türkçe:** Bu cihaz 1999/5/EC, 2009/125/EC direktifleri zorunlu istekler ve diğer hükümlerle ile uyumludur.
- Українська:** Обладнання відповідає вимогам і умовам директиви 1999/5/EC, 2009/125/EC.
- Slovenčina:** Toto zariadenie spĺňa základné požiadavky a ďalšie príslušné ustanovenia smerníc 1999/5/ES, 2009/125/ES.
- Deutsch:** Dieses Gerät erfüllt die Voraussetzungen gemäß den Richtlinien 1999/5/EC, 2009/125/EC.
- Español:** El presente equipo cumple los requisitos esenciales de la Directiva 1999/5/EC, 2009/125/EC.
- Italiano:** Questo apparecchio è conforme ai requisiti essenziali e alle altre disposizioni applicabili della Direttiva 1999/5/CE, 2009/125/CE.
- Nederlands:** Dit apparaat voldoet aan de essentiële eisen en andere van toepassing zijnde bepalingen van richtlijn 1999/5/EC, 2009/125/EC.
- Português:** Este equipamento cumpre os requisitos essenciais da Directiva 1999/5/EC, 2009/125/EC.
- Norsk:** Dette utstyret er i samsvar med de viktigste kravene og andre relevante regler i Direktiv 1999/5/EC, 2009/125/EC.
- Svenska:** Denna utrustning är i överensstämmelse med de väsentliga kraven och övriga relevanta bestämmelser i direktiv 1999/5/EG, 2009/125/EG.
- Dansk:** Dette udstyr er i overensstemmelse med de væsentligste krav og andre relevante forordninger i direktiv 1999/5/EC, 2009/125/EC.
- Suomi:** Tämä laite täyttää direktiivien 1999/5/EY, 2009/125/EY oleelliset vaatimukset ja muut asiaankuuluvat määräykset.

FOR USE IN 



WEEE Directive & Product Disposal



At the end of its serviceable life, this product should not be treated as household or general waste. It should be handed over to the applicable collection point for the recycling of electrical and electronic equipment, or returned to the supplier for disposal.

Declaration of Conformity

We, Edimax Technology Co., Ltd., declare under our sole responsibility, that the equipment described below complies with the requirements of the European R&TTE directives.

Equipment: AC600 Wi-Fi Dual-Band High Gain USB Adapter

Model No.: EW-7811USC

The following European standards for essential requirements have been followed:

Directives 1999/5/EC

Spectrum : ETSI EN 300 328 V1.7.1 (2006-10);
ETSI EN 301 893 V1.6.1 (2011-11)

EMC : EN 301 489-1 V1.9.2 (2011-09);
EN 301 489-17 V2.2.1 (2012-09);

Safety (LVD) : IEC 60950-1:2005 (2nd Edition); Am 1:2009; A2:2010
EN 60950-1:2006+A11:2009+A1:2010+A12:2011

Recommendation 99/519/EC

EMF : EN 62311:2008

Directives 2006/95/EC

Safety (LVD) : IEC 60950-1:2005 (2nd Edition); Am 1:2009; A2:2010
EN 60950-1:2006+A11:2009+A1:2010+A12:2011

Edimax Technology Co., Ltd.
No. 3, Wu Chuan 3rd Road,
Wu-Ku Industrial Park,
New Taipei City, Taiwan



Date of Signature: July 31, 2014

Signature: _____

Printed Name: Albert Chang

Title: Director

Edimax Technology Co., Ltd.

