

Surface Mount Fuse, 7.4 x 3.1 mm, Quick-Acting F, 125 VAC, 125 VDC



UL 248-14 · 125VAC · 125VDC · Quick-Acting F



**Description**

- Directly solderable on printed circuit boards

**Standards**

- UL 248-14  
- CSA C22.2 no. 248.14

**Approvals**

- UL File Number: E41599  
- CSA File Number: 51172


**References**

[Packaging Details](#)  
Corresponding Fuseholder [OMH 125](#)  
Assembled Fuseholder [OMK 125](#)  
Fuse Kit [Fuse Kit OMF](#)

**Weblinks**

[pdf-datasheet](#), [html-datasheet](#), [General Product Information](#), [Approvals](#), [CE declaration of conformity](#), [RoHS](#), [CHINA-RoHS](#), [e-Shop](#), [SCHURTER-Stock-Check](#), [Distributor-Stock-Check](#), [Detailed request for product](#)

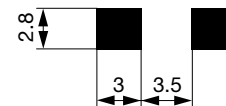
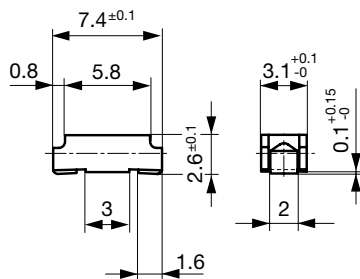
**Technical Data**

|                              |  |
|------------------------------|--|
| Rated Voltage                | 125VAC, 125VDC   |
| Rated Current                | 0.063 - 10A  |
| Breaking Capacity            | 100A   |
| Characteristic               | Quick-Acting F   |
| Mounting                     | PCB,SMT  |
| Admissible Ambient Air Temp. | -40°C to 125°C   |
| Climatic Category            | 40/85/21 acc. to IEC 60068-1   |
| Material: Housing            | Thermoplastic, UL 94V-0  |
| Material: Terminals          | Tin-Plated Copper Alloy  |
| Unit Weight                  | 0.08 g   |
| Storage Conditions           | 0°C to 60°C, max. 70% r.h.   |
| Product Marking              |  Type, Current, Approvals |

|                              |  |
|------------------------------|--|
| Soldering Methods            | Reflow, Wave   |
| Solderability                | 245 °C / 3 sec acc. to IEC 60068-2-58, Test Td                     |
| Resistance to Soldering Heat | 260 +0/-5°C / 40 sec acc. to IPC/JEDEC J-STD-020D, Level 1         |
| Load Humidity Test           | MIL-STD-202, Method 103B<br>0.1 x In @ 0.85 r.H. @ 85°C            |
| Moisture Resistance Test     | MIL-STD-202, Method 106E<br>(50 cycles in a temp./mister chamber)  |
| Terminal Strength            | MIL-STD-202, Method 211A<br>Deflection of board 1 mm for 1 minute  |
| Case Resistance              | acc. to EIA/IS-722, Test 4.7<br>>100 MΩ (between leads and body)   |
| Mechanical Shock             | MIL-STD-202, Method 213B<br>(Shock 50gn, half sine wave, 11 ms)    |
| Vibration, High Frequency    | MIL-STD-202, Method 204D<br>Shock 20 gn, 20 min, 10-2 kHz, 12 cyc. |
| Resistance to Solvents       | MIL-STD-202, Method 215A   |
| Flammability                 | min. UL 94V-1<br>(acc. to EIA/IS-722, Test 4.12)                   |

**Dimensions**

7.4 mm




Soldering pads

## Pre-Arcing Time

| Rated Current I <sub>n</sub> | 1.0 x I <sub>n</sub> min. | 2.0 x I <sub>n</sub> max. | 4.0 x I <sub>n</sub> max. |
|------------------------------|---------------------------|---------------------------|---------------------------|
| 0.063 A - 5 A                | 4 h                       | 1 s                       | 10 ms                     |
| 6.3 A - 8 A                  | 4 h                       | 5 s                       | 50 ms                     |
| 10 A                         | 4 h                       | 20 s                      | 60 ms                     |

## Variants

| Rated Current [A] | Rated Voltage [VAC] | Rated Voltage [VDC] | Breaking Capacity | Voltage Drop 1.0 I <sub>n</sub> typ. [mV] | Power Dissipation 1.0 I <sub>n</sub> typ. [mW] | Melting I <sup>2</sup> t 4.0 I <sub>n</sub> typ. [A <sup>2</sup> s] |  | Order Number |
|-------------------|---------------------|---------------------|-------------------|---|--|---|---|--------------|
| 0.063             | 125                 | 125                 | 1)                | 2550                                      | 160  | 0.00011   | ●   | 3404.0003.xx |
| 0.1               | 125                 | 125                 | 1)                | 1770                                      | 180  | 0.00067   | ●   | 3404.0004.xx |
| 0.125             | 125                 | 125                 | 1)                | 1770                                      | 220  | 0.0011  | ●   | 3404.0049.xx |
| 0.16              | 125                 | 125                 | 1)                | 1700                                      | 270  | 0.0018  | ●   | 3404.0005.xx |
| 0.25              | 125                 | 125                 | 1)                | 990                                       | 250  | 0.0058  | ●   | 3404.0006.xx |
| 0.35              | 125                 | 125                 | 1)                | 990                                       | 350  | 0.0076  | ●   | 3404.0043.xx |
| 0.375             | 125                 | 125                 | 1)                | 990                                       | 370  | 0.013   | ●   | 3404.0044.xx |
| 0.4               | 125                 | 125                 | 1)                | 960                                       | 380  | 0.016   | ●   | 3404.0007.xx |
| 0.5               | 125                 | 125                 | 1)                | 350                                       | 150  | 0.01  | ●   | 3404.0045.xx |
| 0.63              | 125                 | 125                 | 1)                | 290                                       | 180  | 0.02  | ●   | 3404.0008.xx |
| 0.75              | 125                 | 125                 | 1)                | 260                                       | 200  | 0.031   | ●   | 3404.0046.xx |
| 1                 | 125                 | 125                 | 1)                | 220                                       | 220  | 0.078   | ●   | 3404.0009.xx |
| 1.25              | 125                 | 125                 | 1)                | 220                                       | 280  | 0.14  | ●   | 3404.0010.xx |
| 1.5               | 125                 | 125                 | 1)                | 200                                       | 300  | 0.24  | ●   | 3404.0047.xx |
| 1.6               | 125                 | 125                 | 1)                | 200                                       | 320  | 0.27  | ●   | 3404.0011.xx |
| 2                 | 125                 | 125                 | 1)                | 200                                       | 400  | 0.44  | ●   | 3404.0012.xx |
| 2.5               | 125                 | 125                 | 1)                | 190                                       | 480  | 0.97  | ●   | 3404.0013.xx |
| 3                 | 125                 | 125                 | 1)                | 190                                       | 570  | 1.3   | ●   | 3404.0014.xx |
| 3.15              | 125                 | 125                 | 1)                | 190                                       | 600  | 1.2   | ●   | 3404.0048.xx |
| 3.5               | 125                 | 125                 | 1)                | 140                                       | 490  | 1.6   | ●   | 3404.0015.xx |
| 4                 | 125                 | 125                 | 1)                | 140                                       | 560  | 2.1   | ●   | 3404.0016.xx |
| 5                 | 125                 | 125                 | 1)                | 140                                       | 700  | 2.9   | ●   | 3404.0017.xx |
| 6.3               | 125                 | 125                 | 1)                | 110                                       | 690  | 14  | ●   | 3404.0018.xx |
| 7                 | 125                 | 125                 | 1)                | 105                                       | 740  | 16  | ●   | 3404.0019.xx |
| 8                 | 125                 | 125                 | 1)                | 100                                       | 800  | 20  | ●   | 3404.0020.xx |
| 10                | 125                 | 125                 | 1)                | 80  | 800  | 54  | ●   | 3404.0021.xx |

1) 100 A @ 125 VAC/DC

## Packaging Unit

.xx = .11 Plastic Bag (100 pcs.)  
 .xx = .22 Blister Tape 18 cm Reel (750 pcs.)  
 .xx = .24 Blister Tape 33 cm Reel (3000 pcs.)

Time-Current-Curves

