

NOTES:

1. ALL DIMENSIONS ARE SYMMETRIC ABOUT THE CENTERLINE.

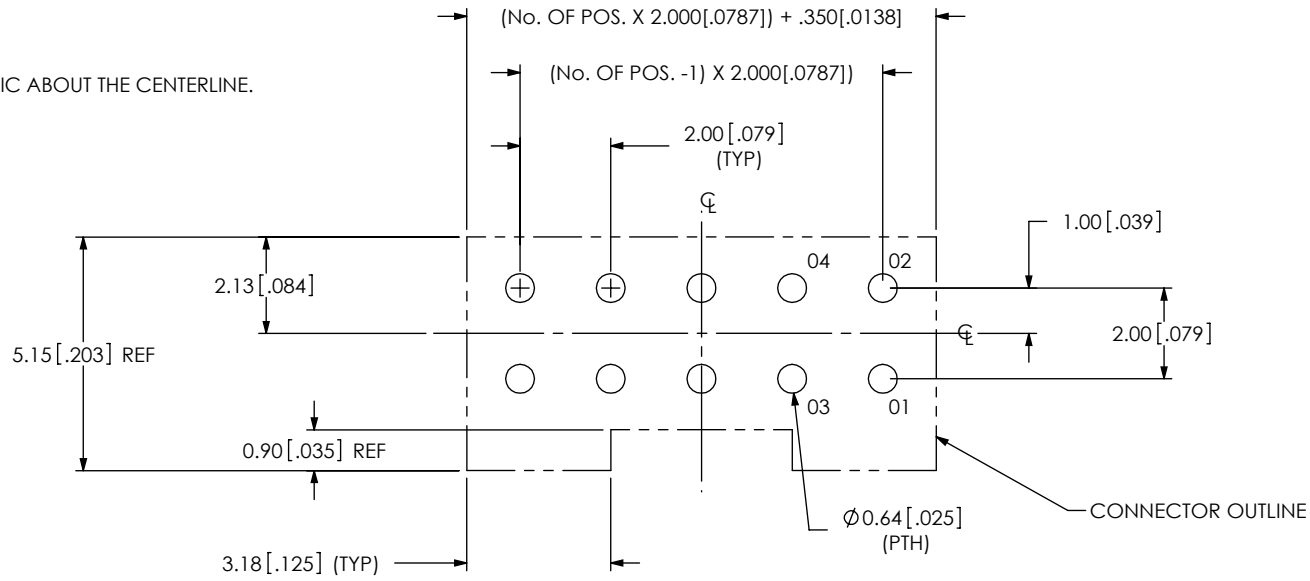


FIG 1
S2M-105-01-X-D-XX-XX SHOWN

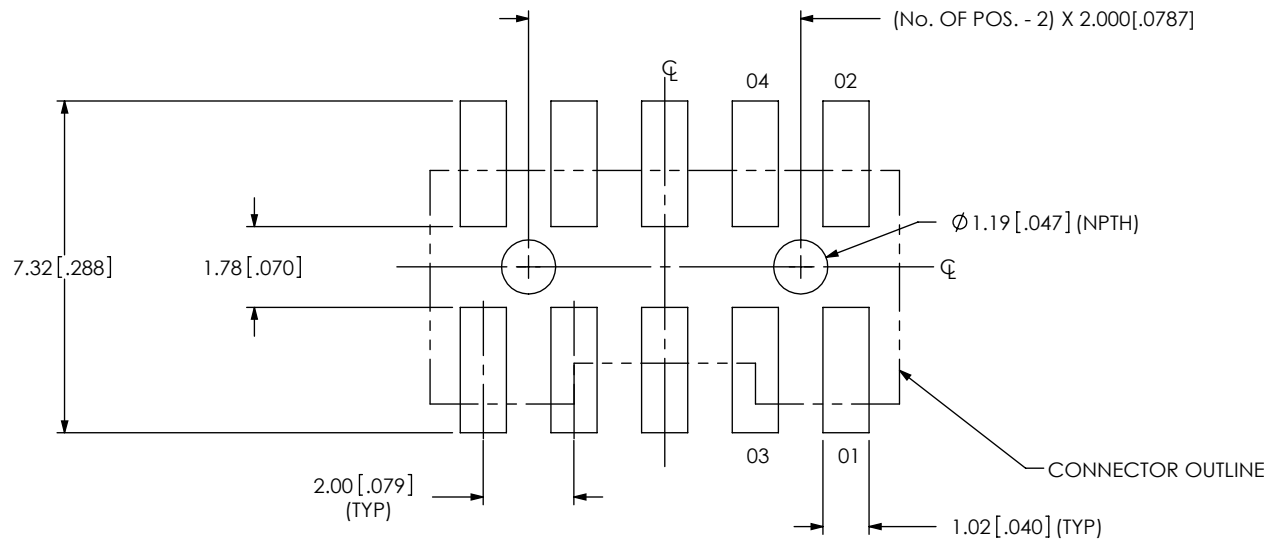


FIG 2
S2M-105-02-X-D-LC-XX SHOWN
(SAME AS FIG.1, EXPECT AS SHOWN)

PROPRIETARY NOTE
THIS DOCUMENT CONTAINS INFORMATION CONFIDENTIAL AND PROPRIETARY TO SAMTEC, INC. AND SHALL NOT BE REPRODUCED OR TRANSFERRED TO OTHER DOCUMENTS OR DISCLOSED TO OTHERS OR USED FOR ANY PURPOSE OTHER THAN THAT WHICH IT WAS OBTAINED WITHOUT THE EXPRESSED WRITTEN CONSENT OF SAMTEC, INC.

samtec
520 PARK EAST BLVD, NEW ALBANY, IN 47150
PHONE: 812-944-6733 FAX: 812-948-5047
e-Mail: info@SAMTEC.com code: 55322

NOTE:

1. -SD OPTION: TO BE SOLDERED USING PASTE-IN-HOLE TECHNOLOGY.

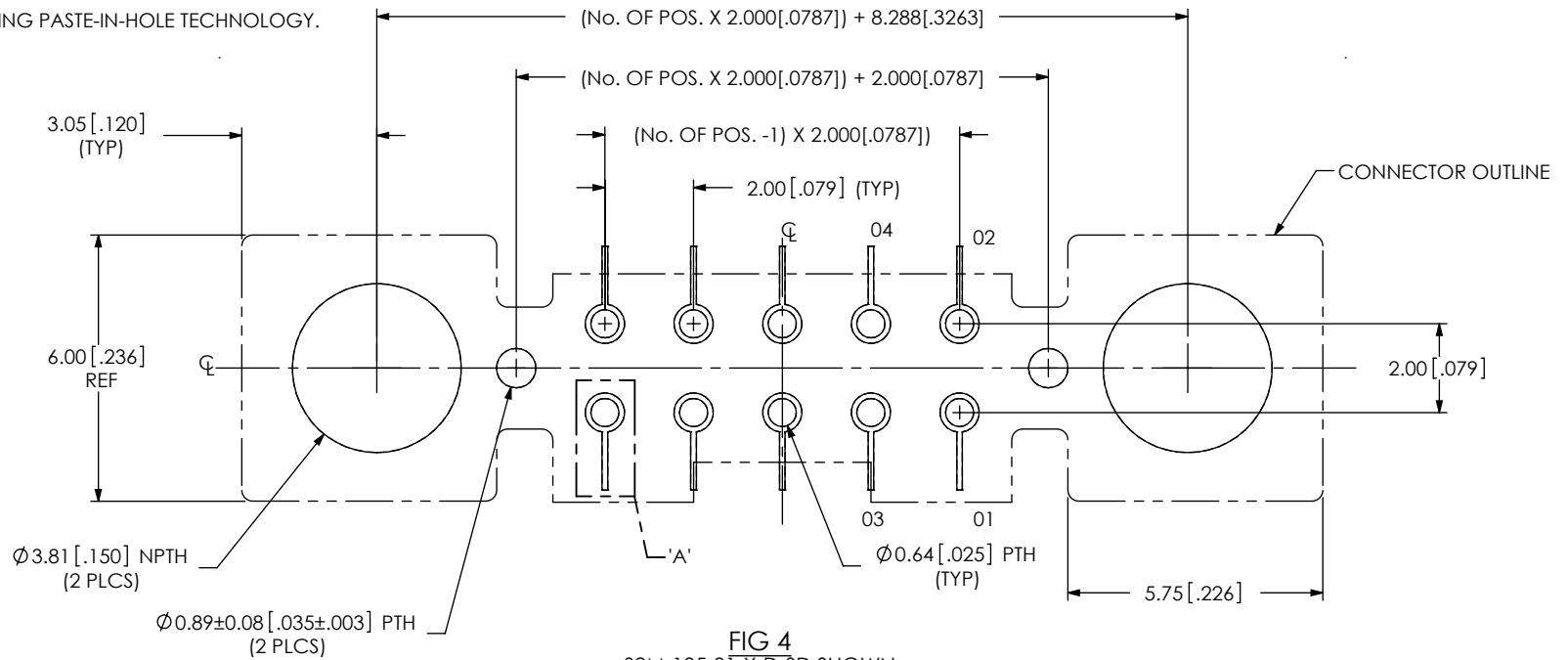


FIG 4
S2M-105-01-X-D-SD SHOWN
(SAME AS FIG 1, EXPECT AS SHOWN) **B**

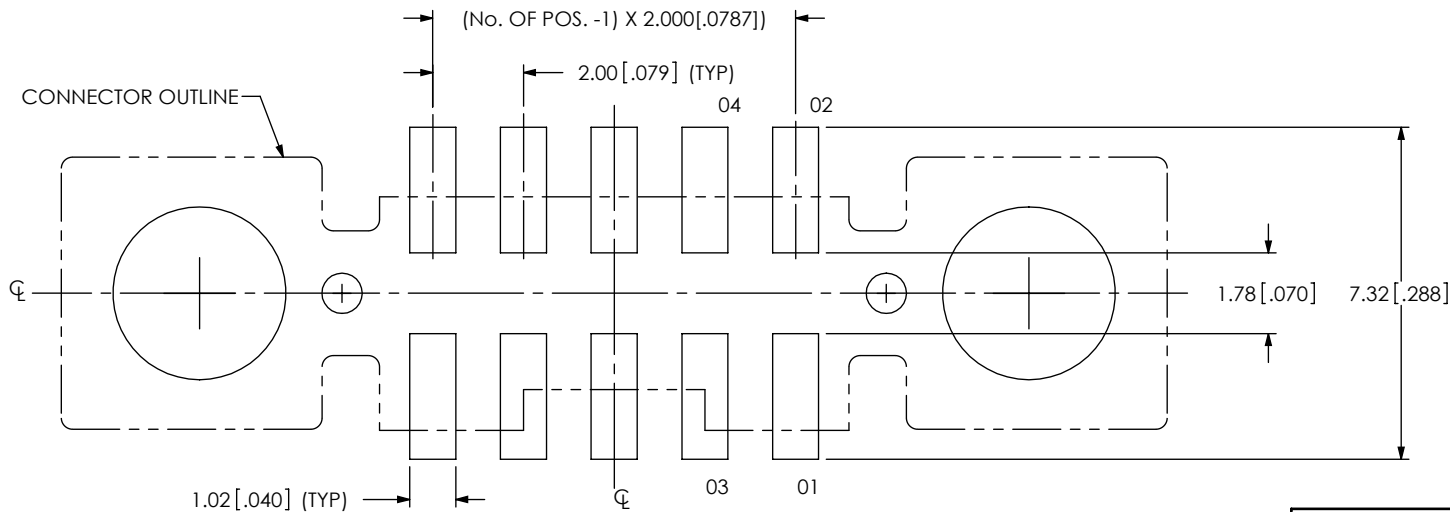
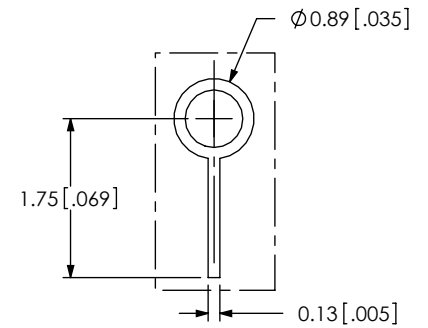


FIG 5
S2M-105-02-X-D-SD SHOWN
(SAME AS FIG 4, EXPECT AS SHOWN) **B**



DETAIL 'A'
SCALE 12:1

PROPRIETARY NOTE

THIS DOCUMENT CONTAINS INFORMATION CONFIDENTIAL AND PROPRIETARY TO SAMTEC, INC. AND SHALL NOT BE REPRODUCED OR TRANSFERRED TO OTHER DOCUMENTS OR DISCLOSED TO OTHERS OR USED FOR ANY PURPOSE OTHER THAN THAT WHICH IT WAS OBTAINED WITHOUT THE EXPRESSED WRITTEN CONSENT OF SAMTEC, INC.



520 PARK EAST BLVD, NEW ALBANY, IN 47150
PHONE: 812-944-6733 FAX: 812-948-5047
e-Mail: info@SAMTEC.com code: 55322

NOTE:

1. STENCIL TO BE .152[.0060] THICK.
2. ALL DIMENSIONS ARE SYMMETRIC ABOUT THE ϕ .

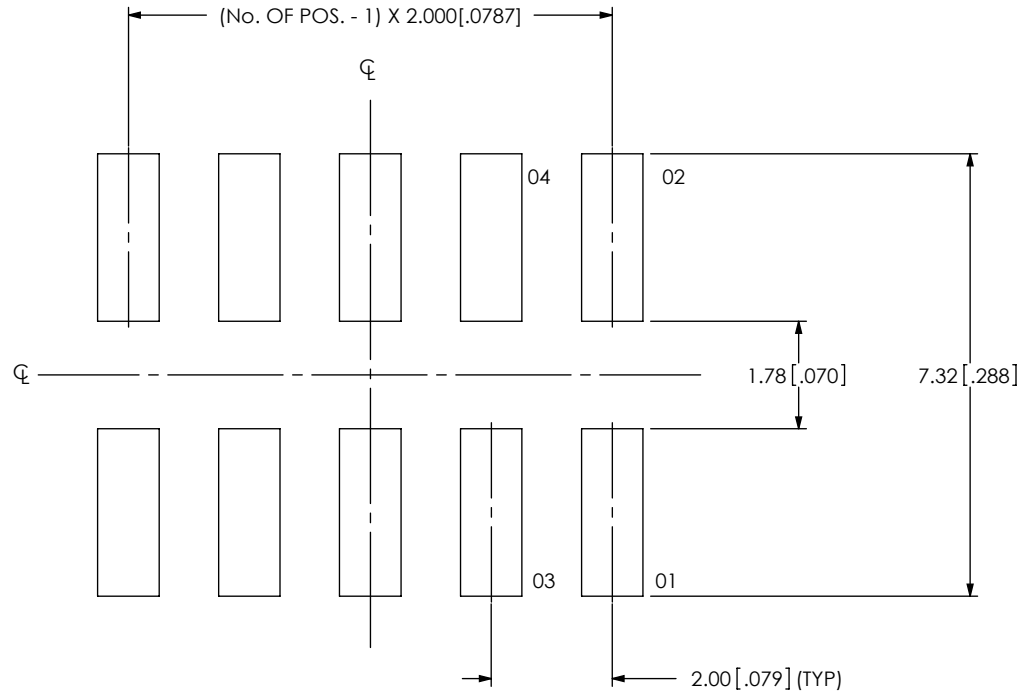


FIG 3
 S2M-105-02-X-D-LC-XX SHOWN
 (SAME AS FIG. 2, EXCEPT AS SHOWN) **B**

PROPRIETARY NOTE

THIS DOCUMENT CONTAINS INFORMATION CONFIDENTIAL AND PROPRIETARY TO SAMTEC, INC. AND SHALL NOT BE REPRODUCED OR TRANSFERRED TO OTHER DOCUMENTS OR DISCLOSED TO OTHERS OR USED FOR ANY PURPOSE OTHER THAN THAT WHICH IT WAS OBTAINED WITHOUT THE EXPRESSED WRITTEN CONSENT OF SAMTEC, INC.



520 PARK EAST BLVD, NEW ALBANY, IN 47150
 PHONE: 812-944-6733 FAX: 812-948-5047
 e-Mail: info@SAMTEC.com code: 55322

NOTE:
 1. STENCIL TO BE .152[.0060] THICK.
 2. ALL DIMENSIONS ARE SYMMETRIC ABOUT THE ϕ .

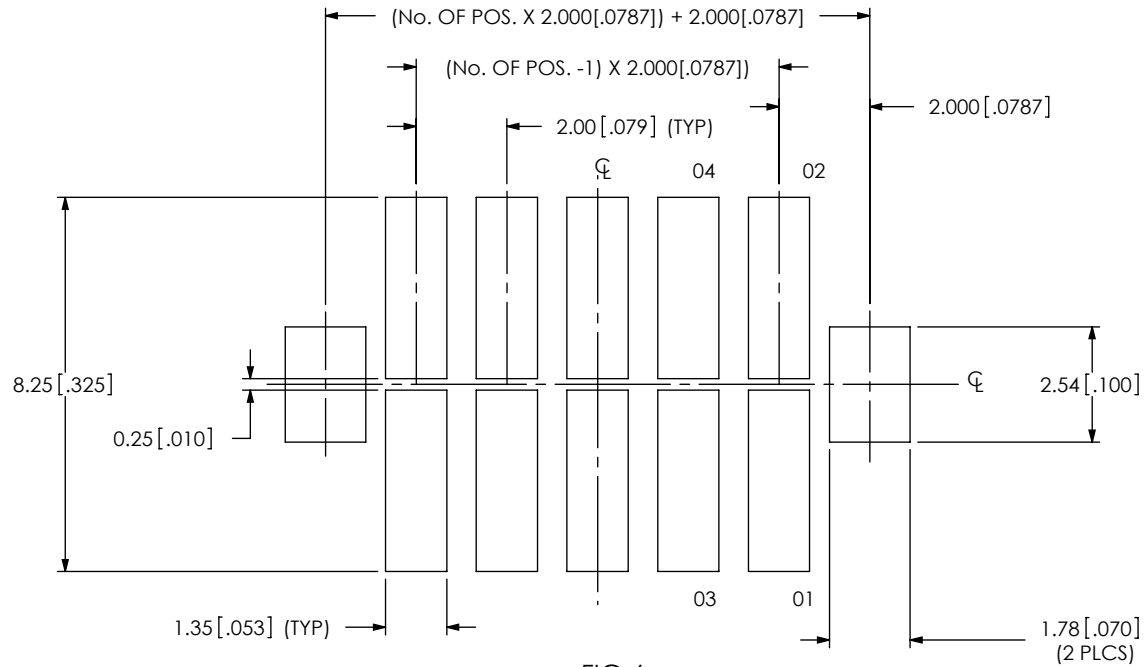


FIG 6
 S2M-105-01-X-D-SD SHOWN
 (SAME AS FIG 4, EXPECT AS SHOWN)

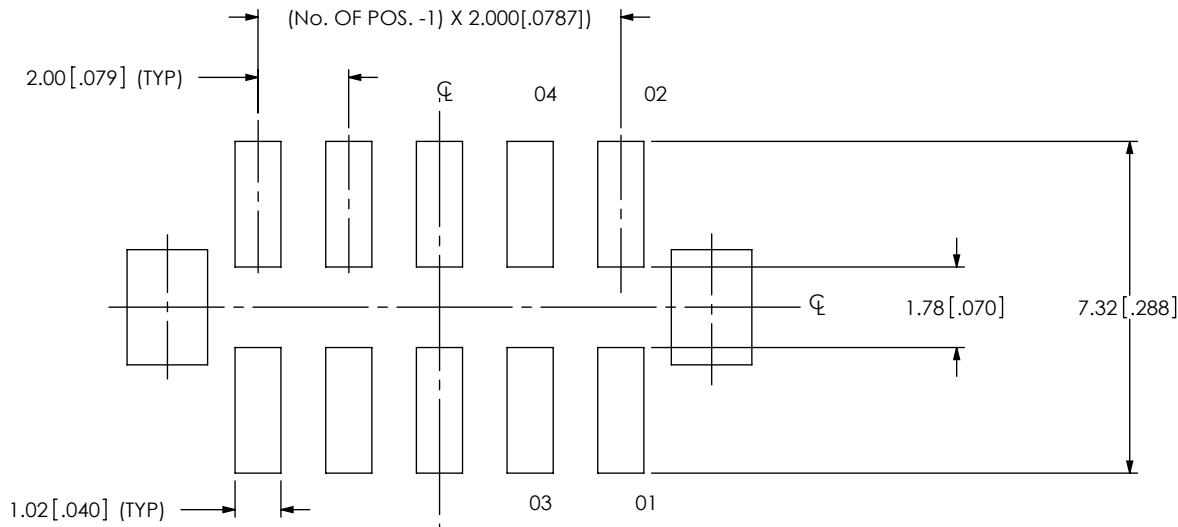


FIG 7
 S2M-105-02-X-D-SD SHOWN
 (SAME AS FIG 6, EXPECT AS SHOWN)

PROPRIETARY NOTE
 THIS DOCUMENT CONTAINS INFORMATION
 CONFIDENTIAL AND PROPRIETARY TO
 SAMTEC, INC. AND SHALL NOT BE REPRODUCED
 OR TRANSFERRED TO OTHER DOCUMENTS OR
 DISCLOSED TO OTHERS OR USED FOR ANY
 PURPOSE OTHER THAN THAT WHICH IT WAS
 OBTAINED WITHOUT THE EXPRESSED WRITTEN
 CONSENT OF SAMTEC, INC.



520 PARK EAST BLVD., NEW ALBANY, IN 47150
 PHONE: 812-944-6733 FAX: 812-948-5047
 e-Mail: info@SAMTEC.com code: 55322