

# FLOATING JOINT (COMPACT CYLINDER EXCLUSIVE) SERIES JB

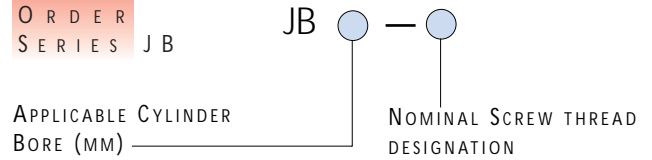
- ✓ Compatible with CQ2 and CQS series compact cylinders up to Ø100mm
- ✓ Absorbs both angular and eccentric misalignment
- ✓ Reduces mounting time of actuator
- ✓ Long life - dust tight cover
- ✓ Do not use for rotation because of non-rotating shaft coupling



### TECHNICAL SPECIFICATIONS

Model	Applicable cylinder bore (mm)	Nominal screw thread designation of applicable cylinder	Max. operating tension and compression power kgf {× 0.01kN}		Allowable eccentricity Umm	Radial deflection
			Compression side	Tension side		
JB12-3-050	12	M3×0.5	12.3	1.9	0.5	±5°
JB16-4-070	16	M4×0.7	12.3	5.4	0.5	
JB20-5-080	20	M5×0.8	110	30	0.5	
JB25-6-100	25	M6×1	250	50	0.5	
JB40-8-125	32·40	M8×1.25	600	130	0.75	
JB63-10-150	50·63	M10×1.5	1100	310	1	
JB80-16-200	80	M16×2	1800	500	1.25	
JB100-20-250	100	M20×2.5	2800	790	2	

### HOW TO ORDER SERIES JB



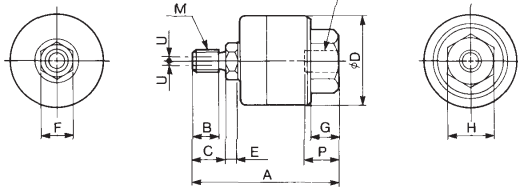
Mark	Applicable cylinder bore (mm)
12	12
16	16
20	20
25	25
40	32·40
63	50·63
80	80
100	100

Nominal screw thread designation	Nominal screw thread designation of applicable cylinder
3-050	M3×0.5
4-070	M4×0.7
5-080	M5×0.8
6-100	M6×1
8-125	M8×1.25
10-150	M10×1.5
16-200	M16×2
20-250	M20×2.5

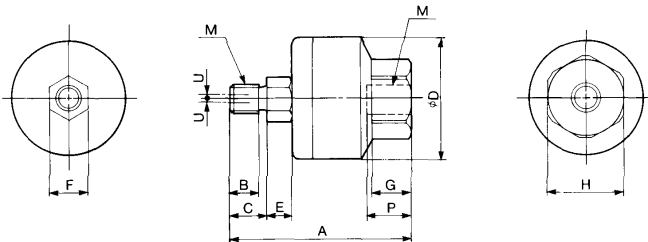
### DIMENSIONS

#### JB FLOATING JOINT

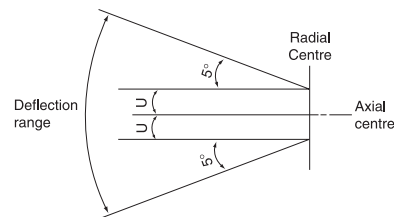
##### JB12·16



##### JB20 - 100



### OPERATING RANGE OF FLOATING JOINT



Operating pressure      Pneumatic compact type cylinder  
9.9kgf/cm<sup>2</sup> {0.99MPa} max.

Applicable cylinder bore	Model	M		A	B	C	D	E	F	G	H	Max. screwed depth P	Allowable eccentricity U	Mass kgf
		Nominal thread dia.	Pitch											
12	JB12-3-050	3	0.5	24.5	3	4	16	2	6	5	10	7	0.5	0.02
16	JB16-4-070	4	0.7	26.5	4.5	6	16	2	6	5	10	7	0.5	0.02
20	JB20-5-080	5	0.8	33	5	6.5	21	4.5	7	7	13	8	0.5	0.04
25	JB25-6-100	6	1	38	6	8	24	5	8	8	17	9	0.5	0.07
32·40	JB40-8-125	8	1.25	51	8.5	11	31	6	11	11	22	13	0.75	0.15
50·63	JB63-10-150	10	1.5	62.5	10	13	41	7.5	14	13.5	27	15	1	0.29
80	JB80-16-200	16	2	80.5	16	20	50	9.5	16	16	32	18	1.25	0.56
100	JB100-20-250	20	2.5	101	21	26	59.5	11.5	20	20	41	24	2	1.04



FOR FURTHER TECHNICAL  
DETAILS ON THIS  
PRODUCT REQUEST  
CATALOGUE REFERENCE  
E219-A