

## Revisions

ISS	Symbol	Description	Date
B		CHP for New Drawing Frame & New PN System	2008/04/11
B-1		CHP for Ferrule Crimped Dimension - from .278" to .289"	2012/03/27

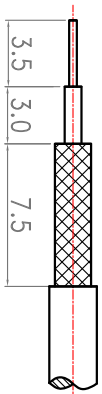
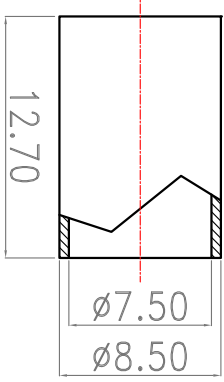
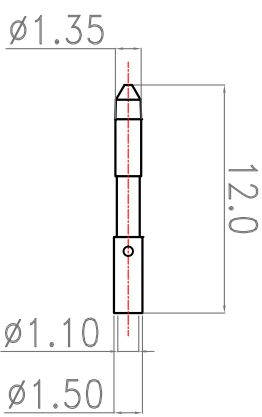
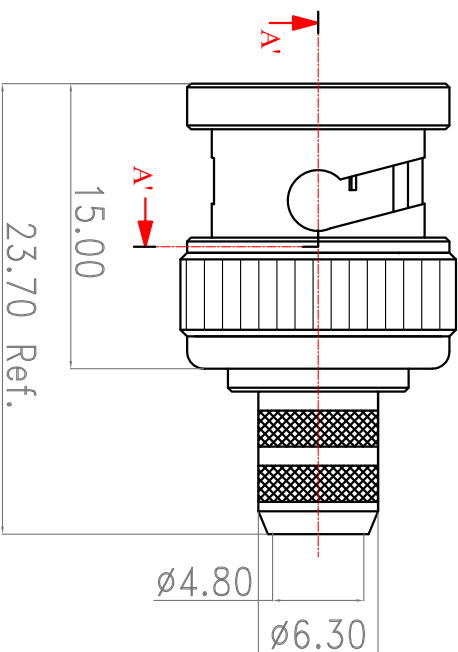
Outline Drawing

### Note :

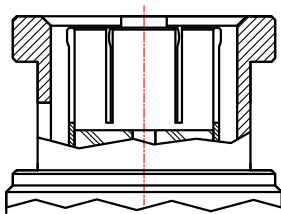
1. Single Crimp: Providing recommended dimensions for ferrule.
  2. Dual Crimp: Providing recommended dimensions for ferrule and center pin.
- Please advise Single/Dual in advance to avoid any inconvenience.
- 2002/95/EC Annex 4 (1) Section 6 paragraph.



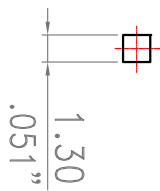
Van Damme code 339-675-300  
RS code 7682176



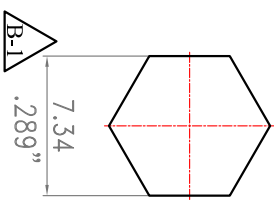
Recommended Cable Stripping Dimensions



Section A-A' 75 ohm



Recommended Crimped Dimensions for Center Pin



Recommended Crimped Dimensions for Ferrule

ROHS COMPLIANCE