

BEAMASTER LENS®



SPECIFICATION

- High power Krypton bulb
- Synthetic rubber housing
- Optical Beamaster lens
- Durable Polycarbonate reflector
- Highly Robust
- Rear charging point for use with PS-RB2
- Impact resistant to 1M
- Rubber Moulded push micro switch
- Water Resistant

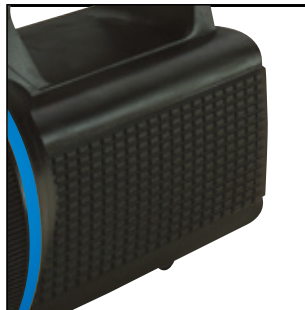
- BATTERY: 1× 6v PJ996 Disposable battery (Included)
- SIZE: 180mm x 110mm
- WEIGHT: 960g (With Battery)



➤ Push Button Micro Switch



➤ Beamaster Lens



➤ Industrial Protection Housing



➤ Contoured Rubber Handle