

### SOT-223



#### Pin Definition:

1. Base
2. Collector
3. Emitter

### PRODUCT SUMMARY

$BV_{CBO}$	-500V
$BV_{CEO}$	-500V
$I_C$	-150mA
$V_{CE(SAT)}$	-0.5V @ $I_C / I_B = -50mA / -10mA$

### Features

- Low Saturation Voltages
- Excellent gain characteristics specified up to -50mA

### Ordering Information

Part No.	Package	Packing
TSA874CW RP	SOT-223	2.5Kpcs / 13" Reel

### Structure

- Epitaxial Planar Type
- PNP Silicon Transistor

### Absolute Maximum Rating (Ta = 25°C unless otherwise noted)

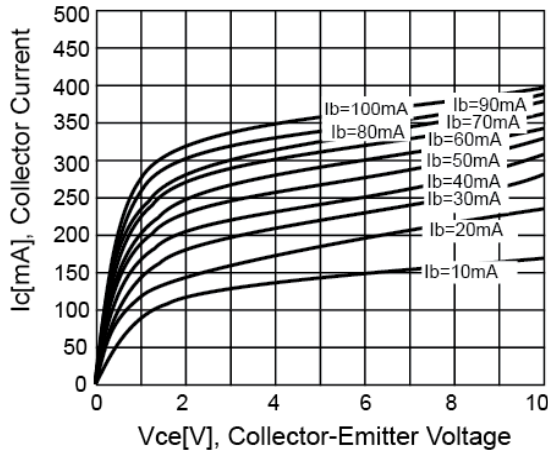
Parameter	Symbol	Limit	Unit
Collector-Base Voltage	$V_{CBO}$	-500	V
Collector-Emitter Voltage	$V_{CEO}$	-500	V
Emitter-Base Voltage	$V_{EBO}$	-5	V
Collector Current	DC	-150	mA
	Pulse	-500	
Total Power Dissipation	$P_{tot}$	1	W
Operating Junction Temperature	$T_J$	+150	°C
Operating Junction and Storage Temperature Range	$T_{STG}$	- 55 to +150	°C

### Electrical Specifications (Ta = 25°C unless otherwise noted)

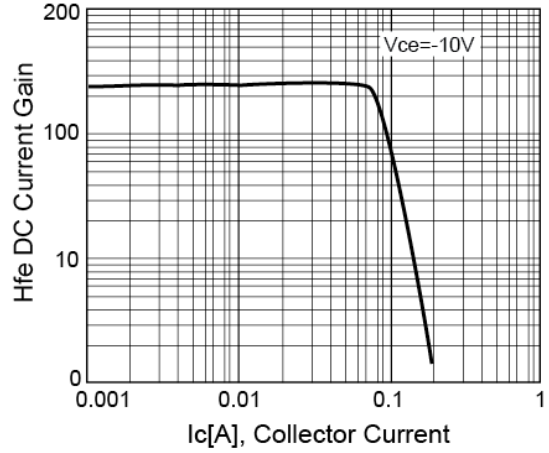
Parameter	Conditions	Symbol	Min	Typ	Max	Unit
Collector-Base Breakdown Voltage	$I_C = -100\mu A, I_E = 0$	$BV_{CBO}$	-500	--	--	V
Collector-Emitter Breakdown Voltage	$I_C = -10mA, I_B = 0$	$BV_{CEO}$	-500	--	--	V
Emitter-Base Breakdown Voltage	$I_E = -100\mu A, I_C = 0$	$BV_{EBO}$	-5	--	--	V
Collector Cutoff Current	$V_{CB} = -120V, I_E = 0$	$I_{CBO}$	--	--	-100	nA
Emitter Cutoff Current	$V_{EB} = -6V, I_C = 0$	$I_{EBO}$	--	--	-100	nA
Collector-Emitter Saturation Voltage	$I_C = -20mA, I_B = -2mA$	$V_{CE(SAT)1}$	--	--	-0.2	V
	$I_C = -50mA, I_B = -10mA$	$V_{CE(SAT)2}$	--	--	-0.5	
Base-Emitter Saturation Voltage	$I_C = -50mA, I_B = -10mA$	$V_{BE(SAT)}$	--	--	-0.9	V
DC Current Transfer Ratio	$V_{CE} = -10V, I_C = -50mA$	$V_{BE(ON)}$	--	--	-0.9	V
	$V_{CE} = -10V, I_C = -1mA$	$h_{FE1}$	150	--	300	
	$V_{CE} = -10V, I_C = -50mA$	$h_{FE2}$	80	--	300	
	$V_{CE} = -10V, I_C = -100mA$	$h_{FE3}$	--	15	--	
Transition Frequency	$V_{CE} = 10V, I_C = -100mA$	$f_T$	--	50	--	MHz
Output Capacitance	$V_{CB} = 20V, f = 1MHz$	$C_{ob}$	--	--	8	pF
Turn On Time	$V_{CE} = -100V, I_C = -50mA$	$T_{on}$	--	110	--	nS
Turn Off Time	$I_{B1} = -5mA, I_{B2} = -10mA$	$T_{off}$	--	1500	--	nS

**Electrical Characteristics Curve** ( $T_a = 25^\circ\text{C}$ , unless otherwise noted)

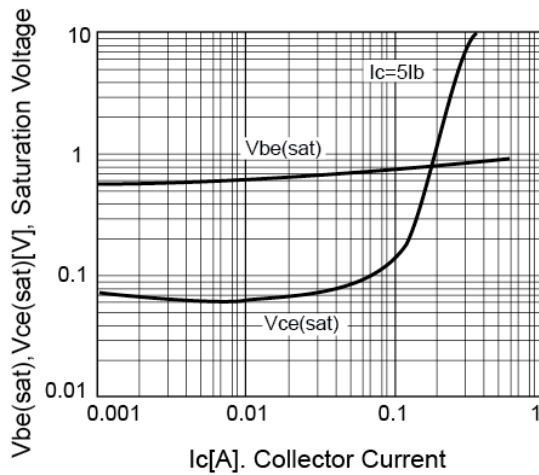
**Figure 1. Static Characteristics**



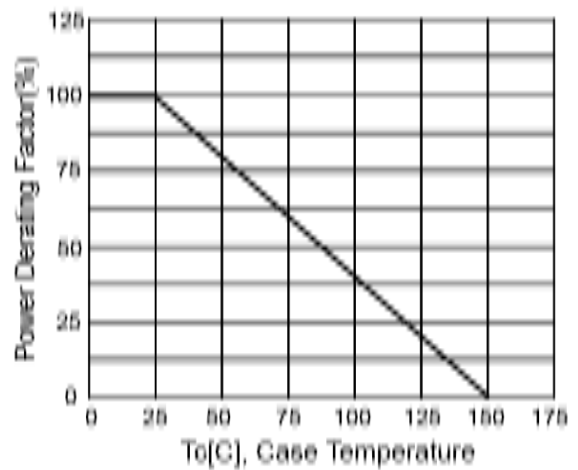
**Figure 2. DC Current Gain**



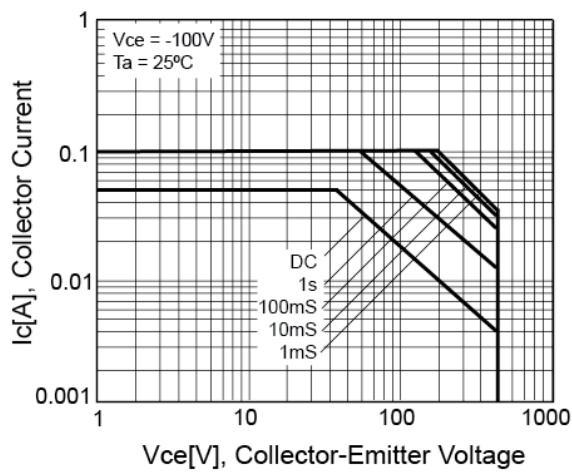
**Figure 3. VCE(SAT) v.s. VBE(SAT)**



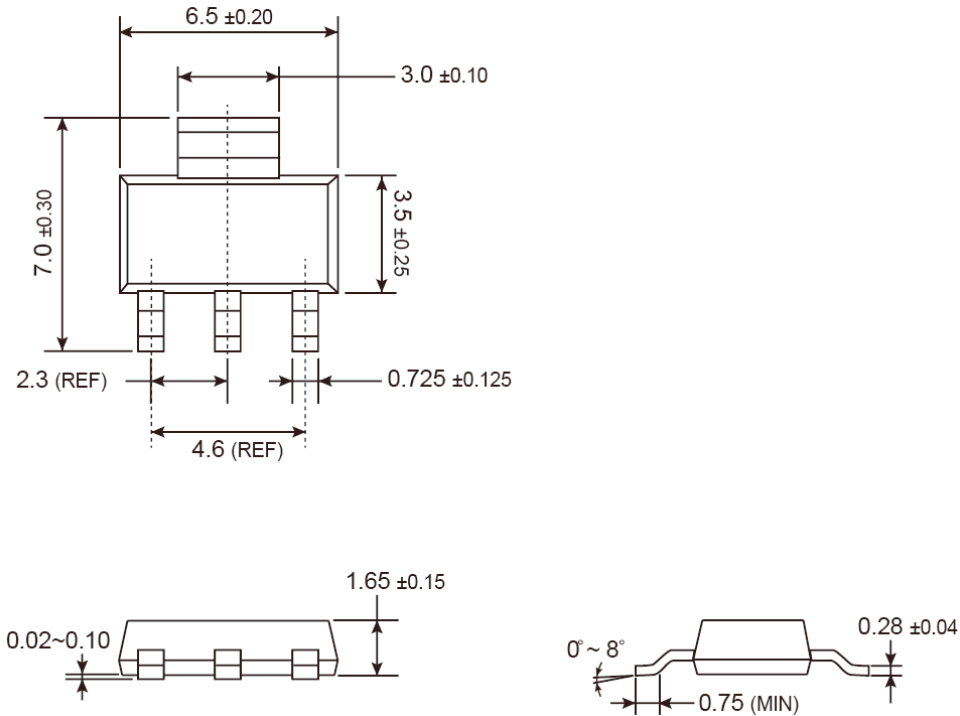
**Figure 4. Power Derating**



**Figure 5. Safety Operation Area**

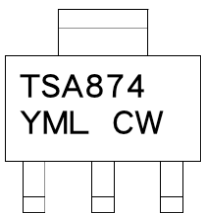


**SOT-223 Mechanical Drawing**



Unit: Millimeters

**Marking Diagram**



- Y** = Year Code
- M** = Month Code  
(**A**=Jan, **B**=Feb, **C**=Mar, **D**=Apr, **E**=May, **F**=Jun, **G**=Jul, **H**=Aug, **I**=Sep, **J**=Oct, **K**=Nov, **L**=Dec)
- L** = Lot Code

## Notice

Specifications of the products displayed herein are subject to change without notice. TSC or anyone on its behalf, assumes no responsibility or liability for any errors or inaccuracies.

Information contained herein is intended to provide a product description only. No license, express or implied, to any intellectual property rights is granted by this document. Except as provided in TSC's terms and conditions of sale for such products, TSC assumes no liability whatsoever, and disclaims any express or implied warranty, relating to sale and/or use of TSC products including liability or warranties relating to fitness for a particular purpose, merchantability, or infringement of any patent, copyright, or other intellectual property right.

The products shown herein are not designed for use in medical, life-saving, or life-sustaining applications. Customers using or selling these products for use in such applications do so at their own risk and agree to fully indemnify TSC for any damages resulting from such improper use or sale.