

Pinnacle Pillar

Standards and approvals

Conforms to the heavy duty requirement of BS 4678 Part 4 and the IP4X classification of EN 60529.

CE compliant meeting EMU and LV directives.

Technical specification

Materials

PVCu materials used in the manufacture of MK products are self extinguishing non-flame propagating in accordance with BS 4678 Part 4.

Extrusion material has been tested by a NAMAS accredited laboratory in accordance with the requirements of BS476: part 7 and has achieved a Class 1Y.

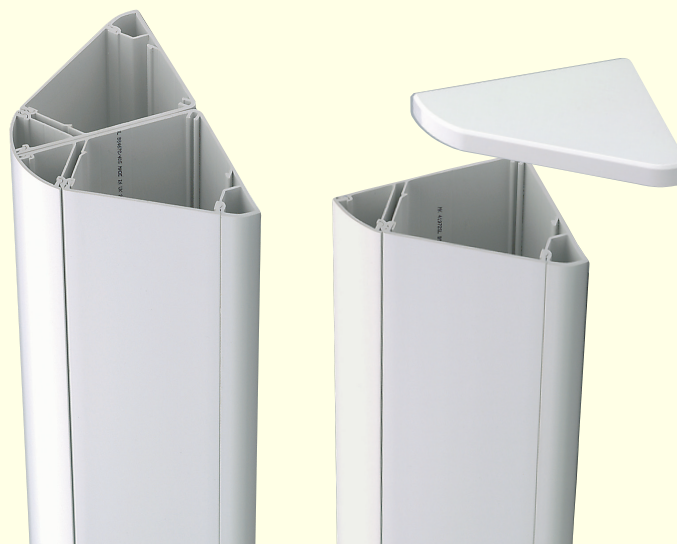
Moulding material has been tested by a NAMAS accredited laboratory and conforms with IEC 695-2-1 at a severity of 650°C.

IEE Wiring Regulations

Designed and manufactured to comply in all respects with BS 7671: 2008.

Quality Assurance

The system is manufactured to BS EN ISO 9001.



Description

Pinnacle Pillars are versatile, vertical multi-compartment systems providing a means to supply LV power, data and telecom services from ceiling or floor voids to specific perimeter locations.

Installation

This unit cannot be free standing and requires to be fully supported to an adequate wall or structure for its entire length.

See Installation Guide 41973PL for details.