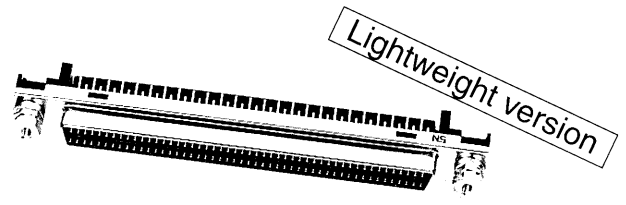
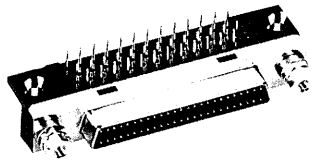


Number of contacts

50-100



Female connector solder pins, angled

Identification

Female connector with angled solder pins

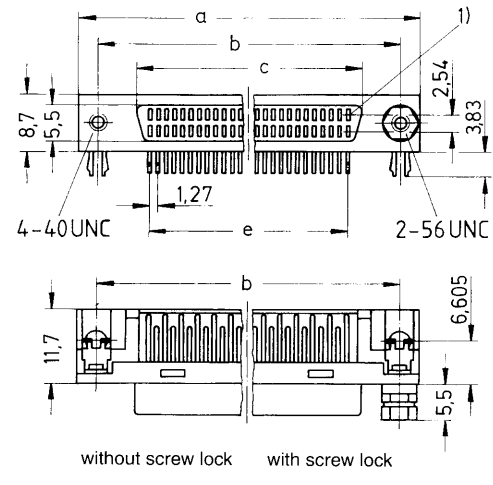
- With female screw lock 2-56 UNC 41
- With female screw lock 4-40 UNC 42
- Without female screw lock 50

No. of contacts
50
68
100

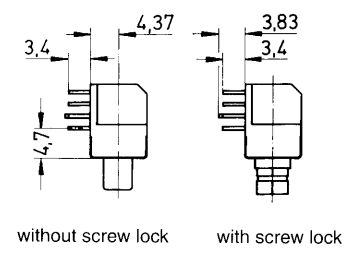
Part No.

- 60 02 550 51 ...
- 60 02 568 51 ...
- 60 02 100 51 ...

Male connector

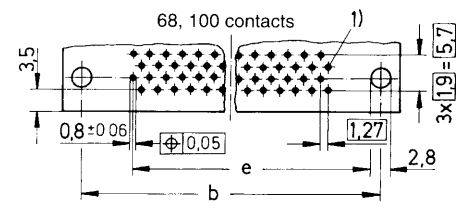
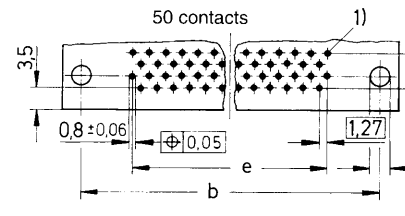


Dimensions in mm

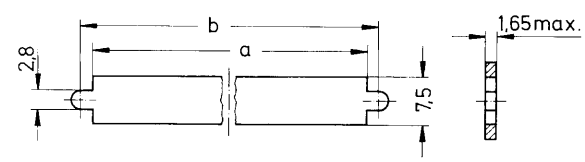


	a	b _{±0.1}	c	e
50	52.45	46.48	34.65	24 x 1.27 = 30.48
68	63.88	57.91	46.08	33 x 1.27 = 41.91
100	84.20	78.23	66.40	49 x 1.27 = 62.23

Board drillings (Components side)



Panel cut out



	a	b
50	42.79	46.48
68	54.22	57.91
100	74.53	78.23

1) Contact number 1