

DC Connector, Plug, 5.5x2.1 mm, 2-pole, angled, with cable



### Description

- pre-assembled cable
- Low Voltage DC Plug and Socket
- DC Plug: 2-pole, angled

### Weblinks

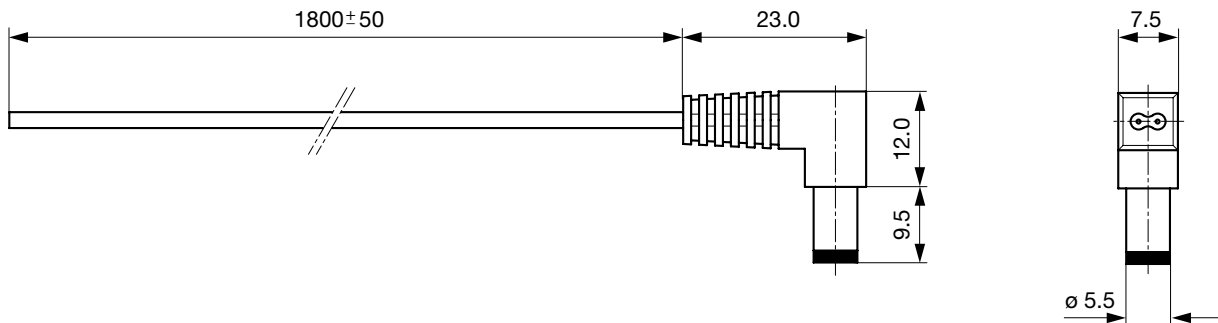
[pdf-datasheet](#), [html-datasheet](#), [General Product Information](#), [RoHS](#), [CHINA-RoHS](#), [Mating Connectors](#), [e-Shop](#), [SCHURTER-Stock-Check](#), [Distributor-Stock-Check](#)

### Technical Data

Diameter	5.5 mm / 2.1 mm
Number of Poles	2-pole
Ratings DC	0.5 A / 12 VDC
Dielectric Strength	500VDC
Insulation Resistance	> 100 MΩ @ 500VDC

Allowable Operation Temp.	-20 °C to 70 °C
Terminal	Cable
Cord Length	1.8 m
Cable Cross Section	2 x 0.3 mm <sup>2</sup>
Style	angled
Lifetime	5000 Insertions

### Dimensions



### All Variants

Product group	Diameter [mm]	Number of Poles	Terminal	Order Number
DC Plug/Socket	5.5	2-pole	Cable	4840.5201

Most Popular.

Availability for all products can be searched real-time: <http://www.schurter.com/en/Stock-Check/Stock-Check-SCHURTER>

Packaging unit 200 Pcs

## Mating Outlets/Connectors

## Category / Description

[DC Plug/Socket Overview complete](#)

4840, solder terminal, , Socket, 6.3 mm, 2-pole, DC Plug/Socket	4840.2200
---	-----------

4840, PCB terminals, , Socket, 6.0 mm, 2-pole, DC Plug/Socket	4840.2201
---	-----------

4840, Cable, , Plug, 5.5 mm, 2-pole, DC Plug/Socket	4840.5202
---	-----------

[DC Plug/Socket further types to 4840 DC-Stecker, verschiedene](#)