

MEMSTYLE

SPECTRA Modules range

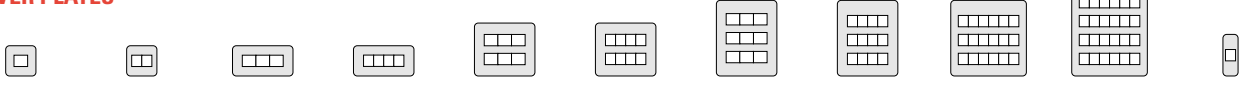
TECHNICAL INFORMATION

Coverplate, Grid and Mounting Box Selection Guide

GANG

1 2 3 4 6 8 9 12 18 24 Architrave

COVER PLATES



INTRA WHITE MOULDED										
M801	M802	M803	M804	M806	M808					
ULTRA FLAT METAL*										
U801	U802	U803	U804	U806	U808	U809	U812	U818	U824	
AURA FLUSH METAL										
STAINLESS STEEL/MATT CHROME										
A801SS	A802SS	A803SS	A804SS	A806SS	A808SS	A809SS	A812SS	A818SS	A824SS	A800SS
SATIN BRONZE										
A801SB	A802SB	A803SB	A804SB	A806SB	A808SB	A809SB	A812SB	A818SB	A824SB	A800SB
HIGHLY POLISHED										
A801HP	A802HP	A803HP	A804HP	A806HP	A808HP	A809HP	A812HP	A818HP	A824HP	A800HP
AURA - MONARCH BRASS										
A801MB	A802MB	A803MB	A804MB							
XTRA - SURFACE METAL										
X801MG	X802MG	X803MG	X804MG	X806MG	X808MG	X809MG	X812MG	X818MG	X824MG	

COVER PLATE DIMENSIONS (mm)

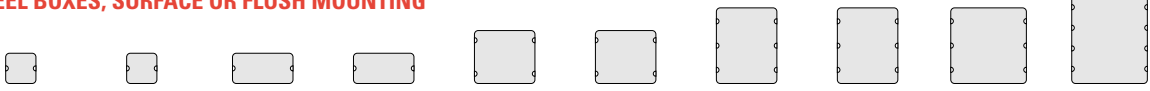
ULTRA - FLAT METAL										
86x86	86x86	86x146	86x146	150x150	150x150	150x210	150x210	219x222	219x279	
XTRA - SURFACE METAL										
86x86	86x86	86x146	86x146	134x134	134x134	134x195	134x195	195x195	195x256	
AURA - MONARCH BRASS										
96x96	96x96	96x158	96x158							
ALL OTHER AURA FINISHES										
89x89	89x89	89x146	89x146	150x150	150x150	150x210	150x210	219x222	219x279	38x116

GRIDS, SURFACE OR FLUSH MOUNTING



1xF8100 1xF8100 1xF8101 1xF8101 2xF8101 2xF8101 3xF8101 3xF8101 3xF8102 4xF8102 F8103

STEEL BOXES, SURFACE OR FLUSH MOUNTING

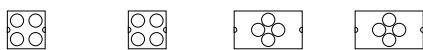


WITH KNOCKOUTS										
FM8340	FM8340	FM8341	FM8341	F8342	F8342	F8343	F8343	F8344	F8345	
WITHOUT KNOCKOUTS										
FM8349	FM8349	FM8350	FM8350	F8351	F8351	F8352	F8352			

DIMENSIONS (mm)

FM8340	FM8340	FM8341	FM8341	F8342	F8342	F8343	F8343	F8344	F8345
41x79x79	41x79x79	41x79x139	41x79x139	41x134x134	41x134x134	41x134x195	41x134x195	56x195x195	56x254x195

STEEL BOXES, FLUSH MOUNTING (35mm deep)



F8368 F8368 F8367 F8367

H - 100mm
W - 28mm
D - 30mm
F8330

MOULDED PATTRISS FOR SURFACE MOUNTING WHITE MOULDED PLATES (28mm deep)



F4501 F4501 F4502 F4502

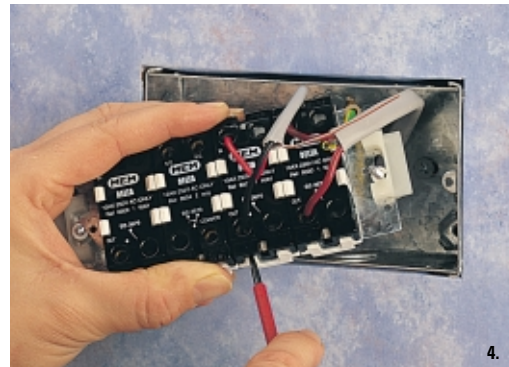
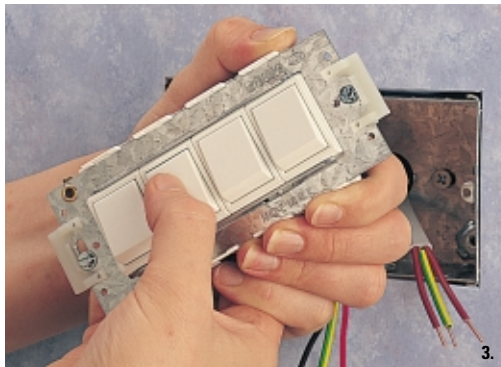
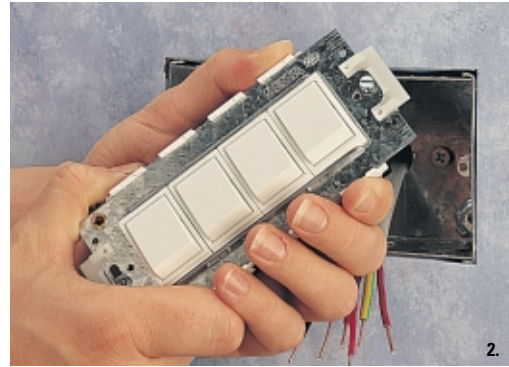
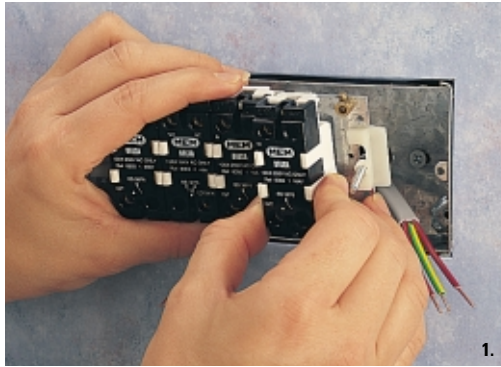
*Add plate finish reference to complete order ie. U801SS

Grid Technical Data

Grid

Installing grid couldn't be easier. Just follow these simple instructions.

1. Push each module on to the grid, after preparing the cable tails in the mounting box.
2. Squeeze the ends of the module together to ensure that the switch has snapped on to the grid. No retaining screw or clip necessary.
3. Push hard on the switch to check that the ends have clipped firmly on to the grid.
4. Wire each individual switch module. All grid modules have wide terminal mouths able to take up to 3 x 2.5mm² cable. The module reference number function and circuit diagram is printed clearly on the reverse for easy reference.
5. When the screws are fully tightened the grid is automatically positioned correctly for mounting the front plate. For metalclad surface applications remove the end clamps before screwing the grid to the mounting applications follow the instructions for flush mounting.
6. Attach the cover plate to the grid using the screws provided with the cover plate.



Standard grid modules

- Current Rating: 10A or 20A - X-rated for fluorescent/ or inductive loads.
- Voltage Rating: 240V A.C. 50Hz

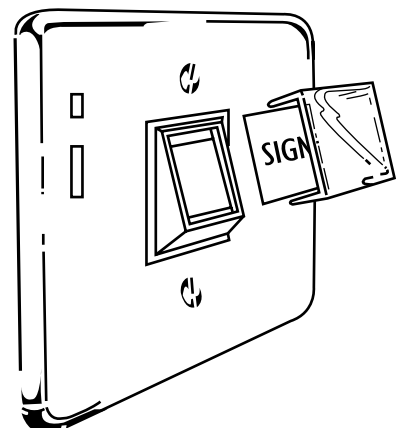
Available labels for the window grid switch

- Labels can be ordered ref. F8085

lounge	toilet	ladies	gents	lights
entrance	reception	spots	garage	emergency
alarm	kitchen	bell	push	bar
press	heater	fan	water heater	stairway

Installation of label and window for window grid switch

- Pre-printed labels and blanks are available separately (ref. F8085) Once clipped into place the transparent windows are NOT designed to be removed from the switch module. The window can be affixed prior to the mounting of the cover plate or afterwards.



Grid Technical Data

Grid Dimmer Modules

Product Code	Lighting Type	Minimum Load	Maximum Load	Grid Spaces Required	No. of Ways
F8064	Tungsten	40W	250W	1 gang	2W
F8065	Tungsten	80W	400W	1 gang	2W
F8066	Tungsten	100W	630W	2 gang 1 blank req.	2W
F8067	Low voltage	50VA	250VA	1 gang	2W
F8068	Low voltage	50VA	400VA	1 gang	2W
F8069	Fluorescent mains dimming	60W	400W	2 gang 1 blank req.	2W
F8078	Fluorescent ballasts	1-10V	10/50 ballasts*	1 gang plus switch req.	2W
F8083	Grid assembly for commercial dimming system				

* For 11-50 ballasts a contactor will also be required.

Note:

Ref. F8066 and F8069 take up two modules, (two gangs) in the grid system and are supplied with a blank module Ref. F8060.

Loading Rules Table

Dimmers can be mounted in the same enclosure providing the total wattage (VA) loading being used is within the following guidelines:

No. of grid gangs	1	2	3	4	6	8	9	12	18	24
Max. wattage per row	500	500	1000	1000	1000	1000	1000	1000	1500	1500
Max total plate wattage	500	500	1000	1000	1500	1500	2000	2000	3000	4000

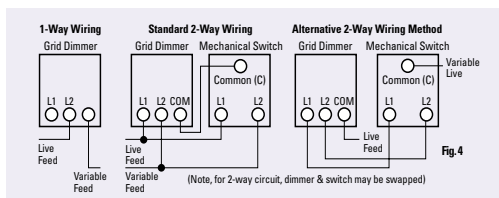
Grid Dimmer Wiring and Set-Up

A. Tungsten - Ref. F8064, F8065, F8066

- One way switching - Live may go to terminal L1 or L2.
- Two way switching - Use both terminals.

Note: that there are two methods for 2-way wiring, only one dimmer can be wired in each circuit (this dimmer may be fitted in either position).

For dimming 230V Tungsten Halogen Lamps, de-rate dimmer by 50% (eg. F8065 maximum load becomes 200W).



B. Low Voltage Lighting - Ref. F8067, F8068

- These Dimmers are for controlling wire-wound laminated and some compatible dimmable electronic transformers
Note: they are not suitable for use with toroidal transformers.
- Wire as for Tungsten Lighting, with the Variable Live to the 230V side of the transformer.
- The Dimmer VA rating represents maximum circuit load. Allow for Transformer Losses, typically 20% (15% for dimmable electronic transformers) i.e. maximum lamp load for 400VA Dimmer becomes 333W (347W for electronic), and 200VA becomes 208W (216W for electronic).
- Any mixture of transformer sizes may be used, providing maximum dimmer rating is not exceeded.
- All Eaton's MEM Grid Dimmers are 'leading edge dimmers'. These are not compatible with transformers which require a trailing edge, phase-cutting or falling edge type dimmer.
- After installation and restoring power, move slider to minimum light, then adjust dimmer for desired maximum light level (normally 20% light) ensuring that the light output is flicker free. (see fig.5)

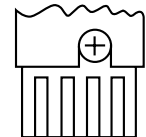
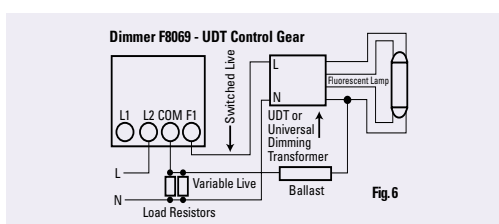
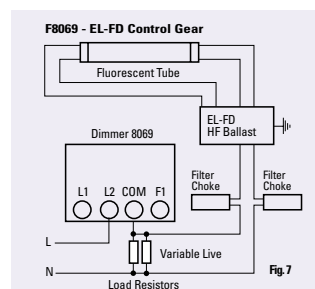


Fig. 5

C. Fluorescent Lighting - Ref. F8069



Typical wiring for dimmer 50Hz flu fittings.



Typical wiring for dimmer high frequency flu fittings 28-45Hz which require mains dimming.

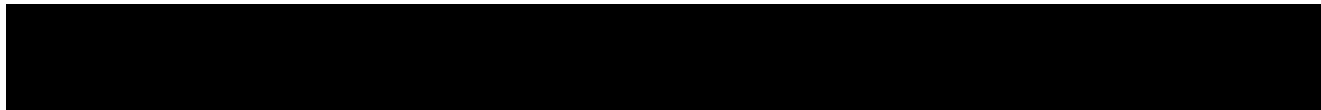
Note:

To overcome lamp flicker, load resistors have to be fitted across the variable live output (Com) and neutral. One load resistor is required for each ballast.

Warning:

Use of lower than minimum loads with fluorescent dimmers will result in damage to the unit.

Quick Options Guide



OPTIONS STANDARD RANGE		1 Gang 1 Way Switch	1 Gang 2 Way Switch	2 Gang 2 Way Switch	3 Gang 2 Way Switch	4 Gang 2 Way Switch	1 Gang Intermed. Switch	2 Gang 1 Way Switch	3 Gang 1 Way Switch	Fan Isolator Switch	3 Pole Isolator Switch
INTRA		M011	M021	M022	M023	M024	M017	M012	M013	M048	M049
ULTRA			U021*	U022*	U023*		U017*			U048*	U049*
A U R A	STAINLESS STEEL		A021SS	A022SS	A023SS		A017SS			A048SS	A049SS
	UNCOATED STAINLESS STEEL		A021US	A022US	A023US		A017US				
	SATIN BRONZE		A021SB	A022SB	A023SB		A017SB			A048SB	A049SB
	HIGHLY POLISHED		A021HP	A022HP	A023HP		A017HP			A048HP	A049HP
XTRA			X021MG	X022MG	X023MG		X017MG			X048MG	X049MG
AURA MONARCH BRASS			A021MB	A022MB	A023MB		A017MB			A048MB	A049MB

OPTIONS STANDARD RANGE		4 Gang 1 Way Switch	1 Gang Bell Push Switch	6 Gang 2 Way Switch	1 Gang 2 Way Architrave	2 Gang 2 Way Architrave	1 Gang Light Symbol	1 Gang 1 Way Architrave
INTRA		M014	M015	M026	M021A	M022A	M015L	M011A
ULTRA			U015*	U026*				
A U R A	STAINLESS STEEL		A015SS					
	UNCOATED STAINLESS STEEL		A015US					
	SATIN BRONZE		A015SB					
	HIGHLY POLISHED		A015HP					
XTRA			X015MG					
AURA MONARCH BRASS			A015MB					

BROAD MODULE RANGE		1 Gang 2 Way Switch	2 Gang 2 Way Half Module	1 Gang Bell Push Switch	1 Gang Intermed. Switch	1 Gang 2 Way Half Module	1 Gang Intermed. Half Module	Double Pole Switch	Double Pole with Neon	2 Gang 2 Way Switch	4 Gang 2 Way Half Module
INTRA		M041	M032	M045	M047	M031	M037	M043	M043N	M042	M034
ULTRA			U032*			U031*					
A U R A	STAINLESS STEEL	A041SS	A032SS	A045SS	A047SS	A031SS	A037SS	A043SS	A043NSS		
	SATIN BRONZE	A041SB	A032SB	A045SB	A047SB	A031SB	A037SB	A043SB	A043NSB		
	HIGHLY POLISHED	A041HP	A032HP	A045HP	A047HP	A031HP	A037HP	A043HP	A043NHP		
XTRA		X041MG	X032MG	X045MG	X047MG	X031MG	X037MG	X043MG	X043NMG		
AURA MONARCH BRASS		A041MB	A032MB	A045MB	A047MB	A031MB	A037MB	A043MB	A043NMB		

OPTIONS FACEPLATES		1 Gang Plate	2 Gang Plate	3 Gang Plate	Half Broad Plate	6 Gang Plate
INTRA		M861	M862	M863	M871	M866
A U R A	STAINLESS STEEL	A861SS	A862SS	A863SS	A871SS	A866SS
	SATIN BRONZE	A861SB	A862SB	A863SB	A871SB	A866SB
	HIGHLY POLISHED	A861HP	A862HP	A863HP	A871HP	A866HP
XTRA		X861MG	X862MG	X863MG	X871MG	X866MG
AURA MONARCH BRASS		A861MB	A862MB	A863MB	A871MB	A866MB

*To order ULTRA product finish please use existing ref. no. and add any suffix from list below:



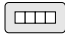
Finishes available are:	SS Stainless Steel	PB Polished Brass
	WH White	AN Anodised Silver
	HP Highly Polished	AB Antique Bronze
	SB Satin Bronze	AC Antique Copper
	BS Brass Satin	MG Metallic Grey

* To order your chosen product with a Black insert use guide below:

1. Use existing ref. no.
2. Add B to the end of ref. no. indicating insert eg. U021B
3. Finally add plate finish ref. ie. SS to complete order ref. no. eg. U021BSS

Voice/Data coverplate selection guide

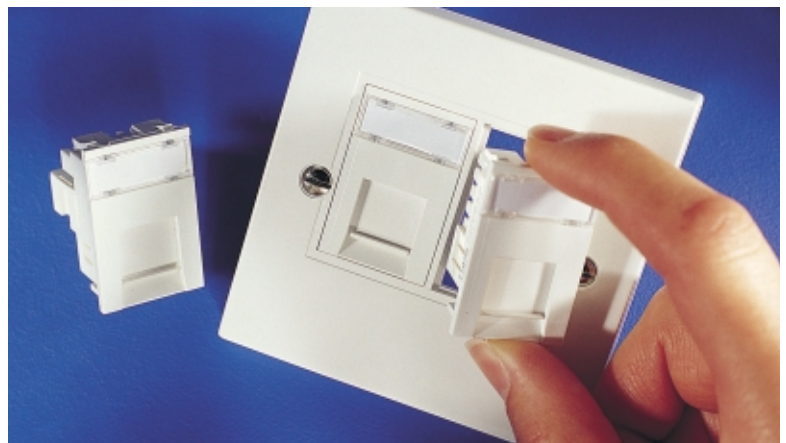
Voice/Data Quick Reference Chart

GANG	1	2	4
COVERPLATES			
INTRA	M851	M852	M854
PLATE DIMENSIONS (mm)	86x86	86x86	86x146
AURA			
STAINLESS STEEL/MATT CHROME	A851SS	A852SS	A854SS
HIGHLY POLISHED	A851HP	A852HP	A854HP
SATIN BRONZE	A851SB	A852HP	A854HP
PLATE DIMENSIONS (mm)	89x89	89x89	89x146
AURA MONARCH BRASS	A851MB	A852MB	A854MB
PLATE DIMENSIONS (mm)	96x96	96x96	96x158
ULTRA	U851*	U852*	U854*
PLATE DIMENSIONS (mm)	86x86	86x86	86x146
XTRA	X851MG	X852MG	X854MG
PLATE DIMENSIONS (mm)	86x86	86x86	86x146

* To order **ULTRA** product finish please use existing ref. no and add any suffix from list below:

Finishes available are:

- SS** Stainless Steel
- WH** White
- HP** Highly Polished
- SB** Satin Bronze
- BS** Brass Satin
- PB** Polished Brass
- AN** Anodised Silver
- AB** Antique Bronze
- AC** Antique Copper
- MG** Metallic Grey



In floor box applications Voice/Data modules can be mounted to flat metal or plastic wall plate and in this case a minimum clearance of 20mm is required behind the plate.

Ref: F3691 is CAT 5E compliant unless otherwise stated. They are suitable for use with wall plates in boxes of only 16mm depth.