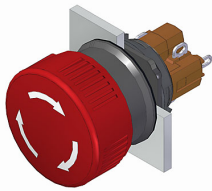


EAO – Your Expert Partner for Human Machine Interfaces

51-156.0256 - Mushroom-head complete

51-156.0256 - Mushroom-head complete



Attention: The preview is based on a sample product. This can differ from your current configuration.

Mounting

Mounting cut-out
Design \varnothing 16 mm
raised

Front

Front dimension \varnothing 24.5 mm
Front shape round

Other Attributes

Weight 0.011 kg

Operating-/Indication part

Lens material Plastic
Lens colour blue
Lens profile Mushroom
Lens optics opaque

IP-Rating

Front protection IP 65

Connection Method

Terminal Solder

Actuator

Switching action Momentary

Switching element

Switching system Snap-action switching element
Contacts 1 NC + 1 NO
Switching current 5 A
Contact material Gold
Switching voltage 250 V AC

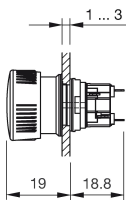
Function

Mushroom-head pushbutton

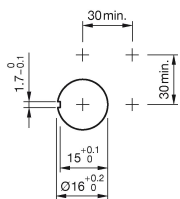
EAO – Your Expert Partner for Human Machine Interfaces

51-156.0256 - Mushroom-head complete

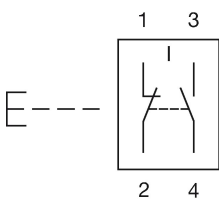
Dimensions



Mounting cut-outs



Wiring diagram



Additional information

If the anti-twist ring is not used the panel thickness increases to 4 mm

Legend

Contacts: NC = Normally closed, NO = Normally open
Switching action: B = Momentary