

## Base strip - MC 1,5/ 7-G-3,5 - 1844265

Please be informed that the data shown in this PDF Document is generated from our Online Catalog. Please find the complete data in the user's documentation. Our General Terms of Use for Downloads are valid (<http://download.phoenixcontact.com>)

Header, Nominal current: 8 A, Rated voltage (III/2): 160 V, Number of positions: 7, Pitch: 3.5 mm, Color: green, Contact surface: Tin, Assembly: Soldering




The figure shows a 10-position version of the product

### Why buy this product

- Versions with engagement noses for locking plugs with self-locking flanges
- Low-profile pin strips with compact pitches
- Plug-in direction parallel and vertical to the PCB
- Individual position coding by inserting coding profiles



### Key commercial data

|                                      |   |
|--------------------------------------|---|
| Packing unit                         | 100 pc  |
| GTIN                                 | <br>4 017918 113308 |
| Weight per Piece (excluding packing) | 1.66 g  |
| Custom tariff number                 | 85366990  |
| Country of origin                    | Germany   |

### Technical data

#### Dimensions

|                |              |
|----------------|--------------|
| Length         | 9.2 mm       |
| Pitch          | 3.5 mm       |
| Dimension a    | 21 mm        |
| Pin dimensions | 0,8 x 0,8 mm |
| Hole diameter  | 1.2 mm       |

#### General

|                             |              |
|-----------------------------|--------------|
| Range of articles           | MC 1,5/...-G |
| Insulating material group   | IIIa         |
| Rated surge voltage (III/3) | 2.5 kV       |
| Rated surge voltage (III/2) | 2.5 kV       |

# Base strip - MC 1,5/ 7-G-3,5 - 1844265

## Technical data

### General

|   |        |
|---|--------|
| Rated surge voltage (II/2)              | 2.5 kV |
| Rated voltage (III/3)                   | 160 V  |
| Rated voltage (III/2)                   | 160 V  |
| Rated voltage (II/2)                    | 250 V  |
| Connection in acc. with standard        | EN-VDE |
| Nominal current I <sub>N</sub>          | 8 A    |
| Maximum load current                    | 8 A    |
| Insulating material                     | PBT    |
| Inflammability class according to UL 94 | V0     |
| Color                                   | green  |
| Number of positions                     | 7      |

## Classifications

### eCl@ss

|            |          |
|------------|----------|
| eCl@ss 4.0 | 272607xx |
| eCl@ss 4.1 | 27260701 |
| eCl@ss 5.0 | 27260701 |
| eCl@ss 5.1 | 27260701 |
| eCl@ss 6.0 | 27260704 |
| eCl@ss 7.0 | 27440402 |
| eCl@ss 8.0 | 27440402 |

### ETIM

|          |          |
|----------|----------|
| ETIM 3.0 | EC001121 |
| ETIM 4.0 | EC002637 |
| ETIM 5.0 | EC002637 |

### UNSPSC

|               |          |
|---------------|----------|
| UNSPSC 6.01   | 30211810 |
| UNSPSC 7.0901 | 39121409 |
| UNSPSC 11     | 39121409 |
| UNSPSC 12.01  | 39121409 |
| UNSPSC 13.2   | 39121409 |

## Approvals

### Approvals

### Approvals

CSA / UL Recognized / VDE Gutachten mit Fertigungsüberwachung / cUL Recognized / GOST / IECCEB Scheme / GOST / CCA / cULus Recognized

# Base strip - MC 1,5/ 7-G-3,5 - 1844265

## Approvals

Ex Approvals

Approvals submitted

## Approval details

|                    |       |       |
|--------------------|-------|-------|
| CSA                |       |       |
|                    | B     | D     |
| Nominal current IN | 8 A   | 8 A   |
| Nominal voltage UN | 300 V | 300 V |

|                    |       |       |
|--------------------|-------|-------|
| UL Recognized      |       |       |
|                    | B     | D     |
| Nominal current IN | 8 A   | 8 A   |
| Nominal voltage UN | 300 V | 300 V |

|   |       |
|---|-------|
| VDE Gutachten mit Fertigungsüberwachung |       |
| Nominal current IN                      | 8 A   |
| Nominal voltage UN                      | 160 V |

|                    |       |       |
|--------------------|-------|-------|
| cUL Recognized     |       |       |
|                    | B     | D     |
| Nominal current IN | 8 A   | 8 A   |
| Nominal voltage UN | 300 V | 300 V |

|      |  |  |
|------|--|--|
| GOST |  |  |
|------|--|--|

# Base strip - MC 1,5/ 7-G-3,5 - 1844265

## Approvals

|                    |       |
|--------------------|-------|
| IECEE CB Scheme    |       |
| Nominal current IN | 8 A   |
| Nominal voltage UN | 160 V |

|      |  |
|------|--|
| GOST |  |
|------|--|

|                    |       |
|--------------------|-------|
| CCA                |       |
| Nominal current IN | 8 A   |
| Nominal voltage UN | 160 V |

|                  |  |
|------------------|--|
| cULus Recognized |  |
|------------------|--|

## Accessories

### Accessories

#### Coding element

Coding profile - CP-MSTB - 1734634

Coding profile, is inserted into the slot on the plug or inverted header, red insulating material



#### Labeled terminal marker

Marker cards - SK 3,5/2,8:FORTL.ZAHLEN - 0804073



Marker cards, Card, white, labeled, Horizontal: Consecutive numbers 1 - 10, 11 - 20, etc. up to 91 - 99, Mounting type: Adhesive, For terminal block width: 3.5 mm, Lettering field: 3.5 x 2.8 mm

## Base strip - MC 1,5/ 7-G-3,5 - 1844265

### Accessories

Fiber optics - MC 1,5/10-LWL 1,5-3,5 - 1841161

Fiber optics, Pitch: 3.5 mm, Number of positions: 10, Dimension a: 1.5 mm, Color: transparent



Fiber optics - MC 1,5/10-LWL 2,3-3,5 - 1841187

Fiber optics, Pitch: 3.5 mm, Number of positions: 10, Dimension a: 2.3 mm, Color: transparent



Fiber optics - MC 1,5/10-LWL 4-3,5 - 1841200

Fiber optics, Pitch: 3.5 mm, Number of positions: 10, Dimension a: 4 mm, Color: transparent



### Additional products

Printed-circuit board connector - MCVW 1,5/ 7-ST-3,5 - 1862904



Plug component, Nominal current: 8 A, Rated voltage (III/2): 160 V, Number of positions: 7, Pitch: 3.5 mm, Connection method: Screw connection, Color: green, Contact surface: Tin

Printed-circuit board connector - MCVR 1,5/ 7-ST-3,5 - 1863204



Plug component, Nominal current: 8 A, Rated voltage (III/2): 160 V, Number of positions: 7, Pitch: 3.5 mm, Connection method: Screw connection, Color: green, Contact surface: Tin

# Base strip - MC 1,5/ 7-G-3,5 - 1844265

## Accessories

Printed-circuit board connector - MC 1,5/ 7-ST-3,5 - 1840418



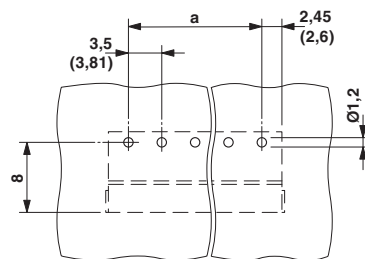
Plug component, Nominal current: 8 A, Rated voltage (III/2): 160 V, Number of positions: 7, Pitch: 3.5 mm, Connection method: Screw connection, Color: green, Contact surface: Tin

## Drawings

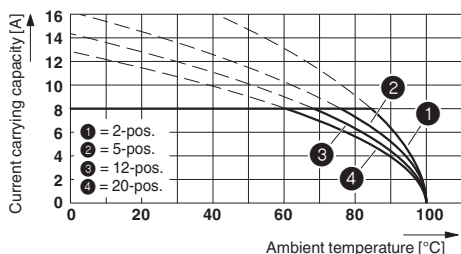
Diagram

Type: MC 1,5/...-ST-3,5 with MC 1,5/...-G-3,5

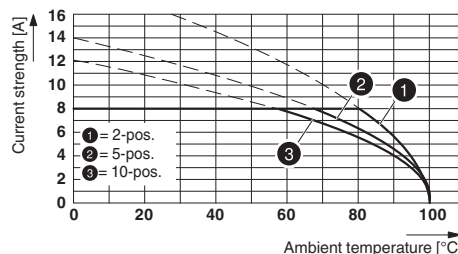
Drilling diagram



Diagram

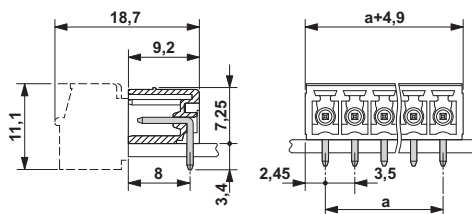


Diagram



Type: TFMC 1,5/...-ST-3,5 with MC 1,5/...-G-3,5

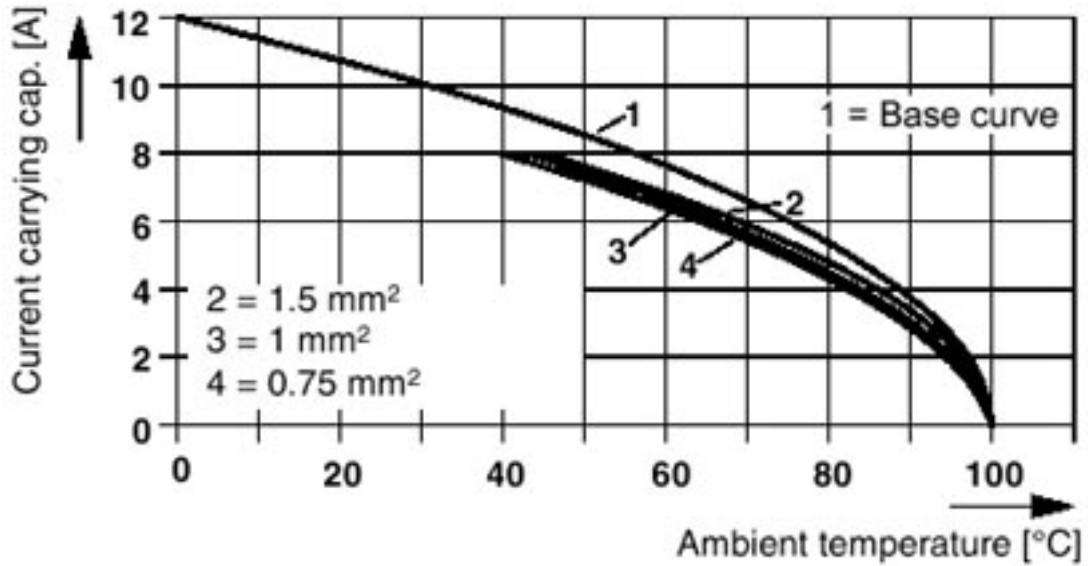
Dimensioned drawing



# Base strip - MC 1,5/ 7-G-3,5 - 1844265

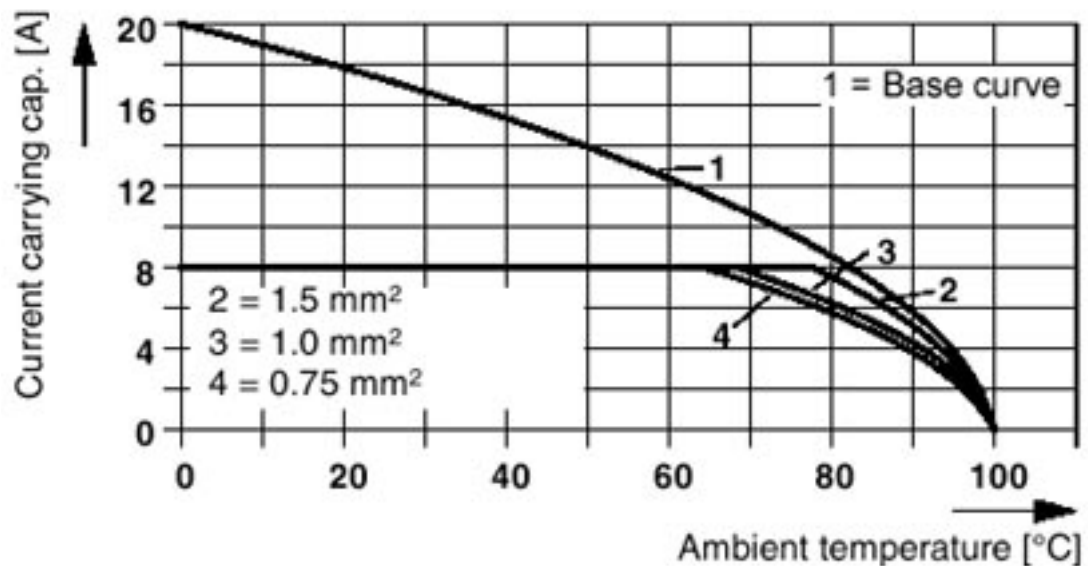
Diagram

Plug: MCVR(W) 1,5/5-ST(F)-3,81(3,5)  
Header: MC(V) 1,5/5-G(F)-3,81(3,5)



Diagram

Plug: MC 1,5/5-ST(F)-3,81(3,5)  
Header: MC(V) 1,5/5-G(F)-3,81(3,5)



# Base strip - MC 1,5/ 7-G-3,5 - 1844265

Diagram

Plug: FRONT-MC 1,5/5-ST(F)-3,81(3,5)  
Header: MC(V) 1,5/5-G(F)-3,81(3,5)

