

VOLTAGE RELEASE, AC 20...24V, 50/60HZ, 100% ED, AC 20...70V, 50/60HZ, 5SEC ED, DC 20...70V, 5SEC ED, WITH SPRING-L. CONNECTION, FOR CIRCUIT-BREAKERS 3RV2



General technical data:

product brand name		SIRIUS
Product designation		shunt release
Size of the circuit-breaker		S00, S0, S2
Design of the product		<kein Wert>
Suitability for use		motor circuit breaker
Protection class IP on the front		IP20
Design of short-circuit protection		fuse
Degree of pollution		3
Insulation voltage rated value	V	690
Insulation voltage with degree of pollution 3 rated value	V	690
Ambient temperature		
• during storage	°C	-50 ... +80
• during operation	°C	-20 ... +60
Equipment marking acc. to DIN 40719 extended according to IEC 204-2 acc. to IEC 750		F
Equipment marking acc. to DIN EN 61346-2		F

Auxiliary circuit:

Number of NC contacts for auxiliary contacts instantaneous contact		0
Number of NO contacts for auxiliary contacts instantaneous contact		0
Number of NO contacts for auxiliary contacts leading contact		0
Number of CO contacts of auxiliary contacts instantaneous contact		0

Control circuit/ Control:

Type of voltage of the control supply voltage		AC
Control supply voltage frequency		
• 1		
— rated value		<kein Wert>
— Initial rated value	Hz	50
— Final rated value	Hz	60
• 2 rated value		<kein Wert>
Control supply voltage		
• 1		
— at DC		
— rated value		<kein Wert>
— Initial rated value		<kein Wert>
— Final rated value		<kein Wert>
— at AC		
— at 50 Hz rated value	V	<kein Wert>
— at 50 Hz Initial rated value	V	20
— at 50 Hz Final rated value	V	24
— at 60 Hz rated value	V	<kein Wert>
— at 60 Hz Final rated value	V	24
— at 60 Hz Initial rated value	V	20
• 2		
— at DC rated value		<kein Wert>
— at AC		
— at 50 Hz rated value		<kein Wert>
— at 60 Hz rated value		<kein Wert>

Installation/ mounting/ dimensions:

Mounting type		snap-on mounting
Width	mm	18.5
Height	mm	90
Depth	mm	68
Required spacing with side-by-side mounting		
• forwards		<kein Wert>
• Backwards		<kein Wert>

<ul style="list-style-type: none"> • upwards • downwards • at the side 	<kein Wert>	<kein Wert>	<kein Wert>
Required spacing for grounded parts <ul style="list-style-type: none"> • forwards • Backwards • upwards • at the side • downwards 	<kein Wert>	<kein Wert>	<kein Wert>
Required spacing for live parts <ul style="list-style-type: none"> • forwards • Backwards • upwards • downwards • at the side 	<kein Wert>	<kein Wert>	<kein Wert>

Certificates/ approvals:

Certificate of suitability	CE / UL / CSA
-----------------------------------	---------------

General Product Approval	Declaration of Conformity	Test Certificates	Shipping Approval
--------------------------	---------------------------	-------------------	-------------------



[spezielle Prüfbescheinigung](#)
n

[Typprüfbescheinigung/Werkszeugnis](#)



Shipping Approval



Shipping Approval	other	Railway
-------------------	-------	---------



[Umweltbestätigung](#)



[Schwingen/Schocke](#)
n

[Bestätigungen](#)

Further information

Information- and Downloadcenter (Catalogs, Brochures,...)
<http://www.siemens.com/industrial-controls/catalogs>

Industry Mall (Online ordering system)
<http://www.siemens.com/industrymall>

Cax online generator

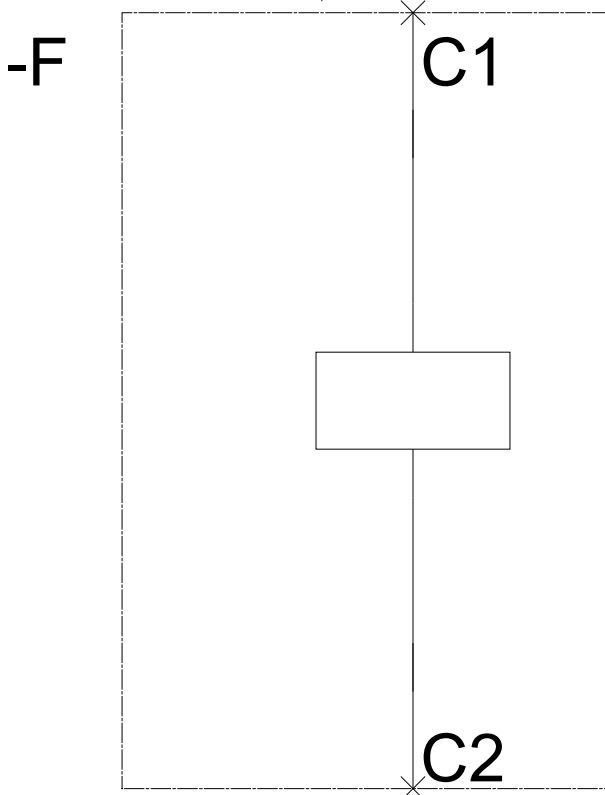
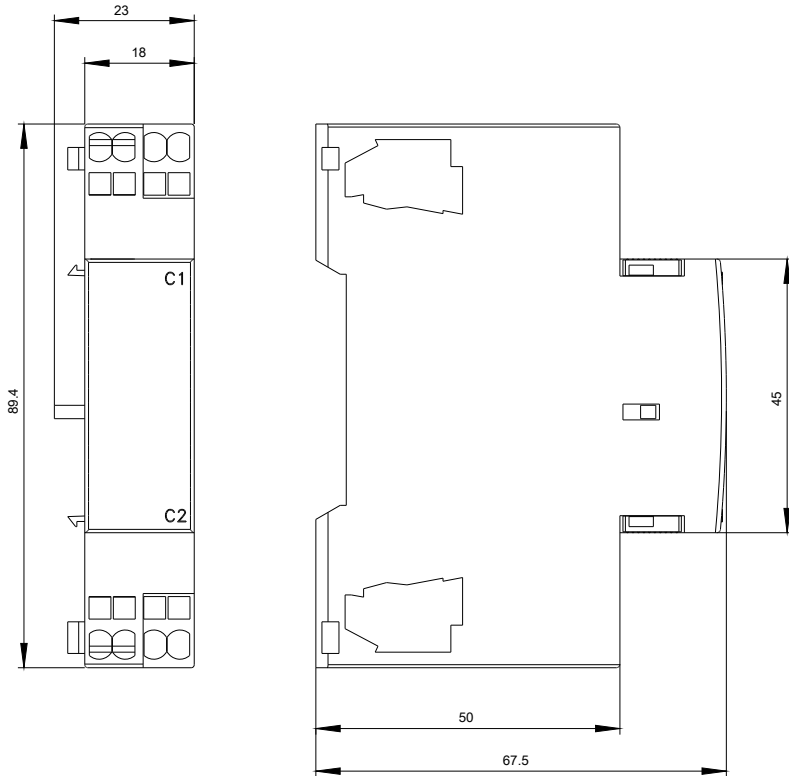
<http://support.automation.siemens.com/WW/CAXorder/default.aspx?lang=en&mfb=3RV29022DB0>

Service&Support (Manuals, Certificates, Characteristics, FAQs,...)

<https://support.industry.siemens.com/cs/ww/en/ps/3RV29022DB0>

Image database (product images, 2D dimension drawings, 3D models, device circuit diagrams, EPLAN macros, ...)

http://www.automation.siemens.com/bilddb/cax_de.aspx?mfb=3RV29022DB0&lang=en



last modified:

07.12.2015