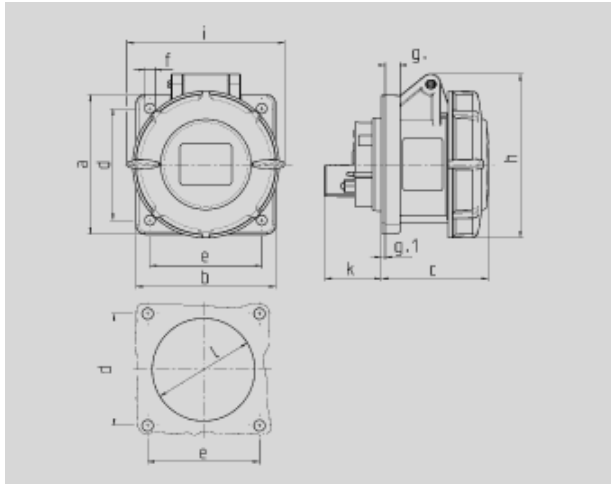










: 218A

## Panel mounted receptacle



Drawing 1 MB 141	Amp. Poles	16			32		
		3	4	5	3	4	5
Dim. in mm	a	75	75	75	85	85	85
	b	75	75	75	75	75	75
	c	60	61	61	70	70	72
	d	60	60	60	60	60	60
	e	60	60	60	60	60	60
	f	5.5	5.5	5.5	5.5	5.5	5.5
	g.	8	8	8	8	8	8
	g.1	2	2	2	2	2	2
	h	83	88	95	99	99	105
	i	78	85	96	103	103	110
	k	31	32	32	39	39	39
	l	43	52	54	58	58	65
Terminal for cond. cross section (mm <sup>2</sup> ) min.-max.		1.5	1.5	1.5	2.5	2.5	2.5
		-4	-4	-4	-10	-10	-10

	: <b>1046</b>
voltages	: 230V
rated current	: 16A
pole	: 3 pole
IP protection types	: IP67
position of ground contact	: 6h
packing unit	: 0010
	: 150 g

		<b>110</b>	<b>230</b>	<b>400</b>	<b>500</b>	<b>&gt;50-500</b>	
		50,60	50,60	50,60	50,60	100-300	300-500
							
<b>16 A</b>	3	217A	<u>218A</u>	219A			
	4	220A	221A	222A	223A	224A	225A
	5	226A	227A	228A			
<b>32 A</b>	3	229A	230A	231A			
	4	232A	233A	234A	235A	236A	237A
	5	238A	239A	240A			