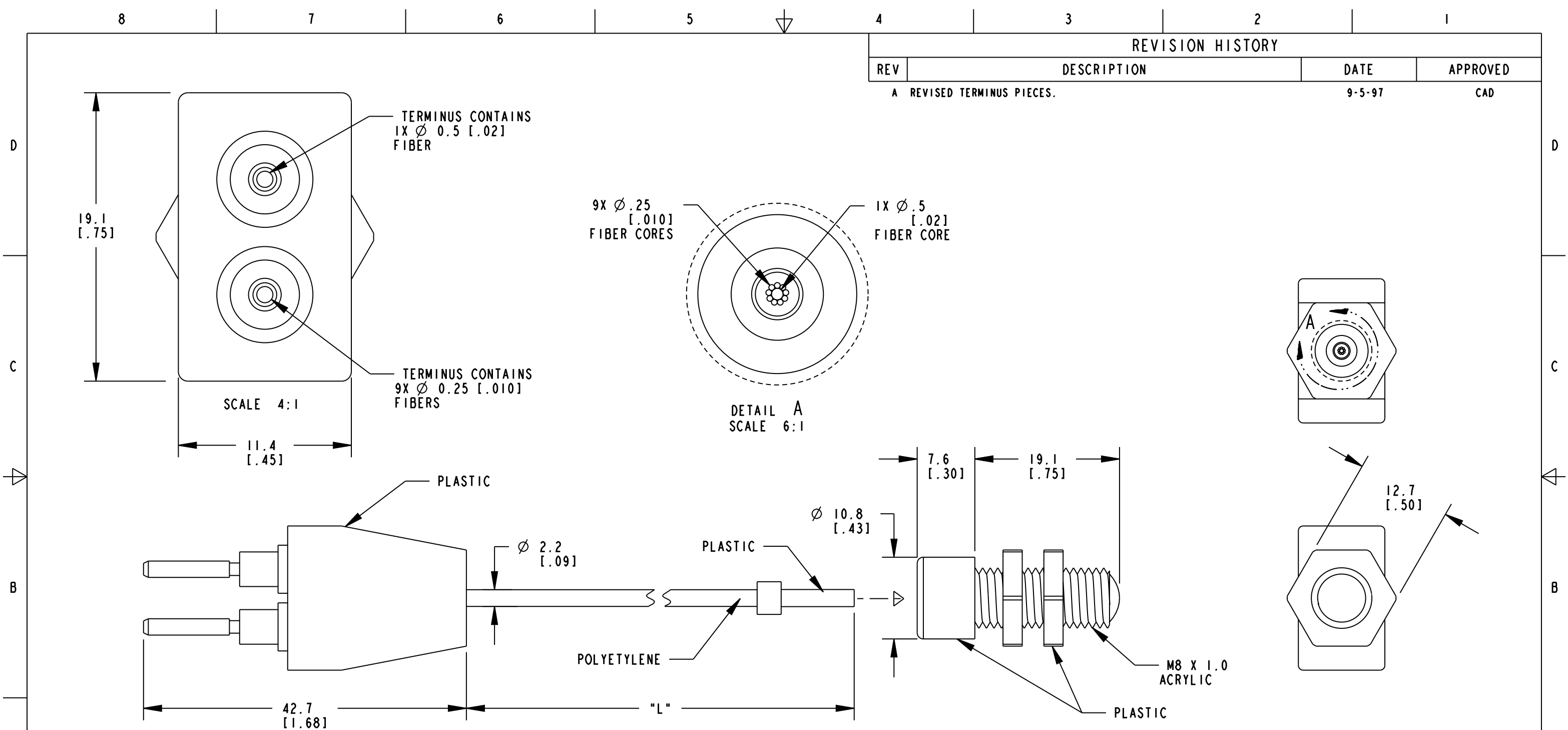



REVISION HISTORY			
REV	DESCRIPTION	DATE	APPROVED
A	REVISED TERMINUS PIECES.	9-5-97	CAD



MODEL NO.	"L"	P/N
PBCL22T	610 [24]	65944
PBCL21.5T	457 [18]	65931
PBCL21T	305 [12]	65932
PBCL26T	2000 [79]	45097

REV.	DESCRIPTION	DATE	INITIAL
	Dimensions are Millimeters [inches] <b>TOLERANCES</b> (Unless Otherwise Specified) X : ±2.5mm X.X : ±0.25 X.XX : ±0.12mm [X.X : ±.1"] [XX : ±.01"] [XXX : ±.005"] ANGLE : ±3° *L* = 40mm/Meter [1.5"/Foot]		
	 BANNER ENGINEERING Corp. 9717 10th Ave. North Minneapolis, MN 55441 Tel # 763-544-3164 Fax # 763-544-3573 www.bannerengineering.com This drawing is the property of BANNER ENGINEERING Corp. and is proprietary in general and in detail. Its contents shall not be revealed to outside parties without the written consent of BANNER.		
	PBCL26T		PLASTIC FIBEROPTIC ASSEMBLY & MOD'S
5-2-97	I OF I	45097	A