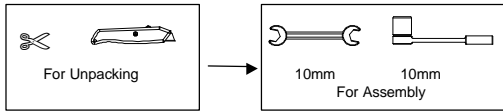
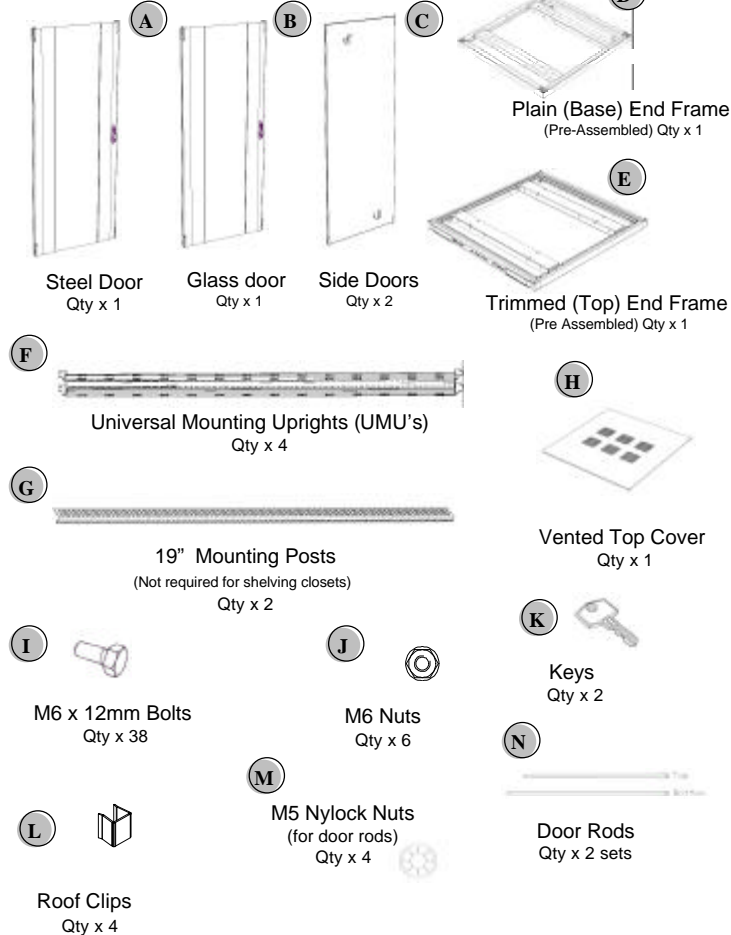


Elite 303 Frame Flat Pack Assembly Guidelines

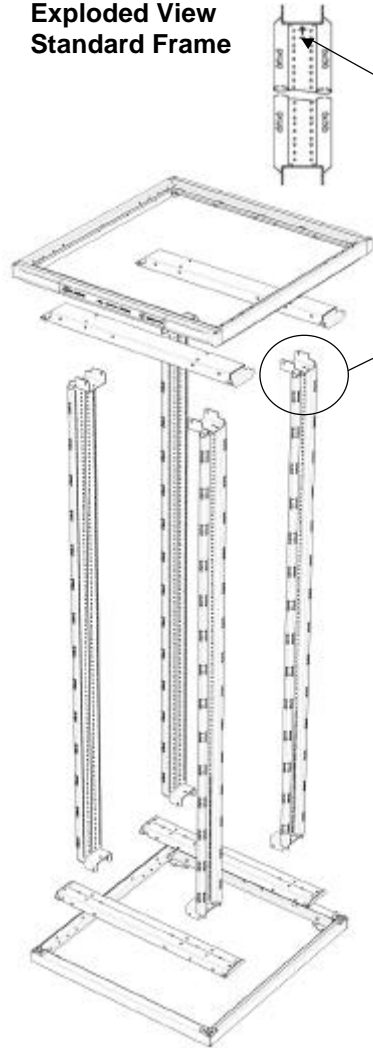
Tools Required



Contents (Standard Build only illustrated)

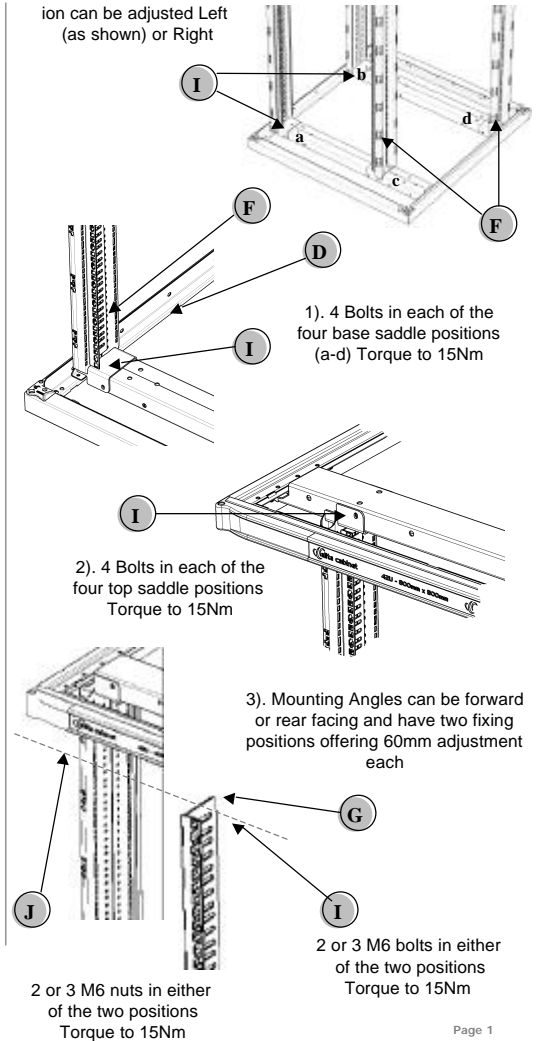


Exploded View Standard Frame



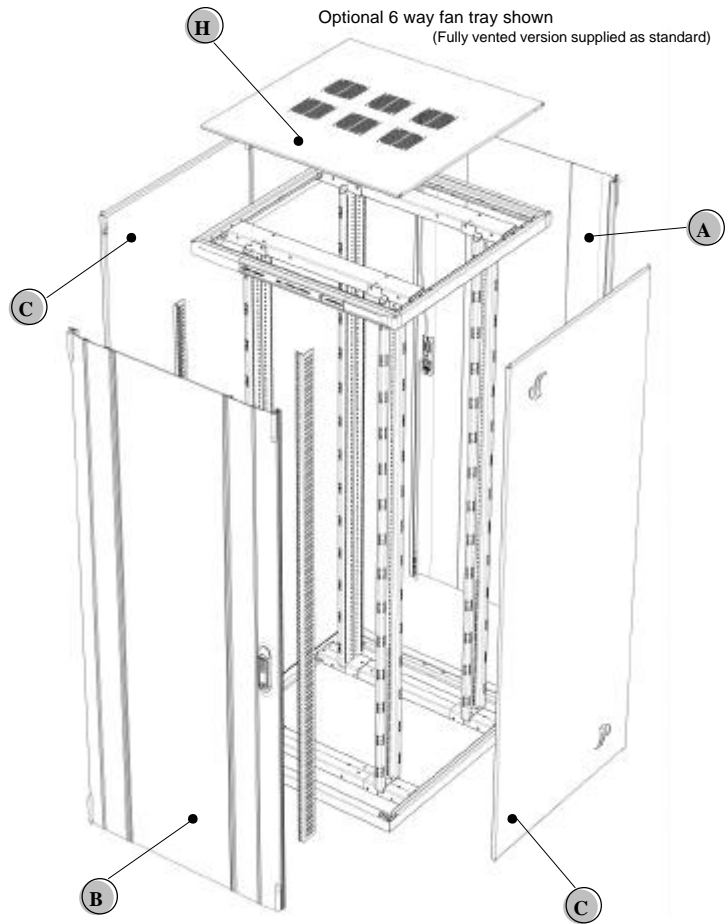
Assembly Stages 1-3

UMU Central Default Position can be adjusted Left (as shown) or Right

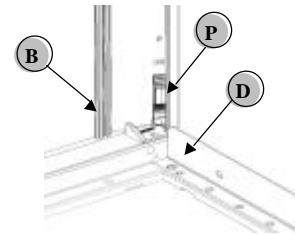


Elite 303 Frame Flat Pack Assembly Guidelines

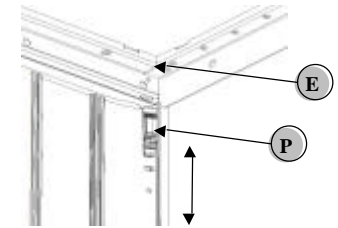
Front, Rear and Side Door Hanging Guidelines



Steel and glass doors hanging method

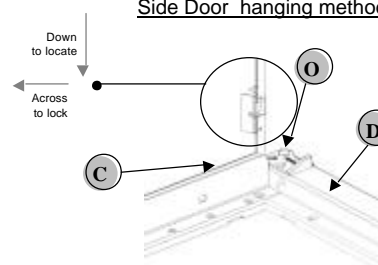


Fixed pin in bottom corner plate



Align and slide top hinge pin into corner moulding

Side Door hanging method



Ensure pin is locked in position

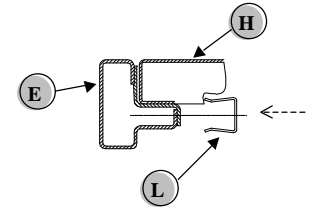


Door Plates
(Qty x 4 per end frame)



Hinge Pins
pre-fitted to
front & rear doors
(Qty x 2 per front & rear door)

Top cover fixing method



Lay Top cover in position and push clip into position front and rear only