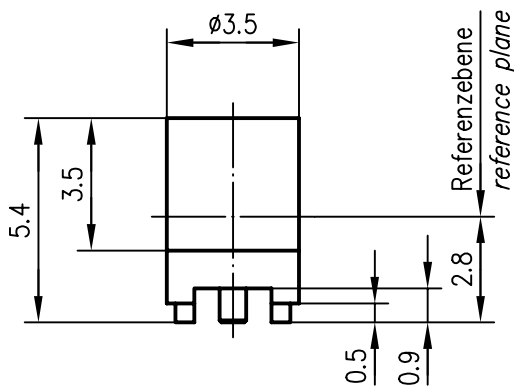
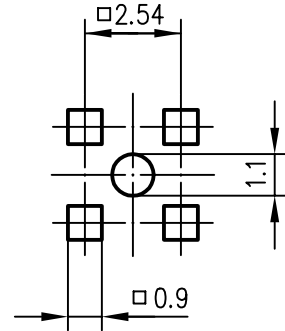
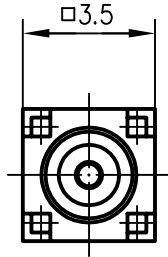
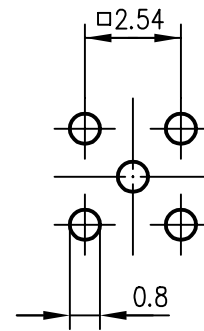


Anschlussmaße nach EN 122340 / Mating face according to EN 122340 (a)

empfohlene Lötflächen
recommended solder areas Z90



Montagebohrungen
panel piercings Z23



Innenleiter / inner conductor
Außenleiter / outer conductor
Isolierung / insulator

CuBe2
CuZn39Pb3
PTFE

Cu1Ni2Au1.27
Cu1Ni2Au0.8

Rückflußdämpfung / return loss


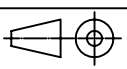
Frequenz / frequency

VSWR typ.

1 GHz	1.035
2 GHz	1.058
3 GHz	1.091

M 1:1



a	14514	12.05.03	MA	98	Datum/date	Name/name	Werkstoff/ material
				gez./drawn	14.05.	Beyer	
				gepr./appr.	19.05.98	KL	Oberfläche/ finish
				Norm./stand.			
				Maßstab/scale	Benennung/title		
				5:1	MMCX-Buchse in SMT MMCX Jack in SMT		
				untol. Maße/ dim. without tolerances according to	Untert./doc.type	Zeichnungsnr./drawing no.	
				K	J01341A0091		
				Ersatz für/ replaces	EW970276-00		
						 Telegärtner  Maße/dimensions: mm Original: DIN A4	