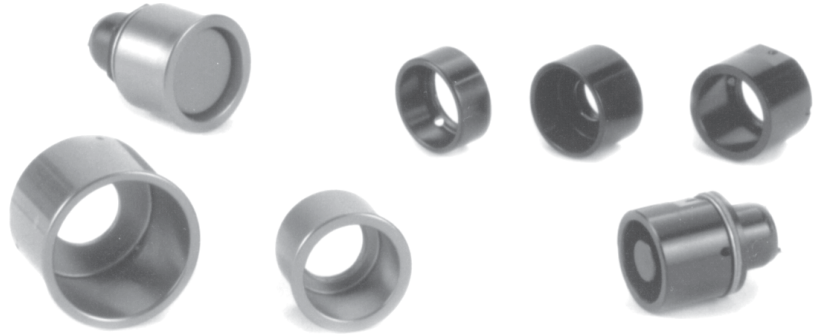


## SHROUDS, PANEL SEALS & MOUNTING HARDWARE

### Shrouds

Shrouds are added to pushbutton switches to guard against inadvertent actuation. The actuating device must be inserted into the shroud in order to actuate the switch. We have an assortment from which to choose shown here. We are also able to design and fabricate a shape to meet your specifications and application needs.

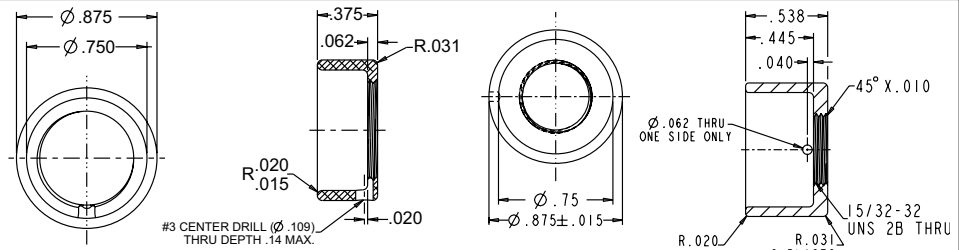


**Material:**

Aluminum alloy, machined to specification.

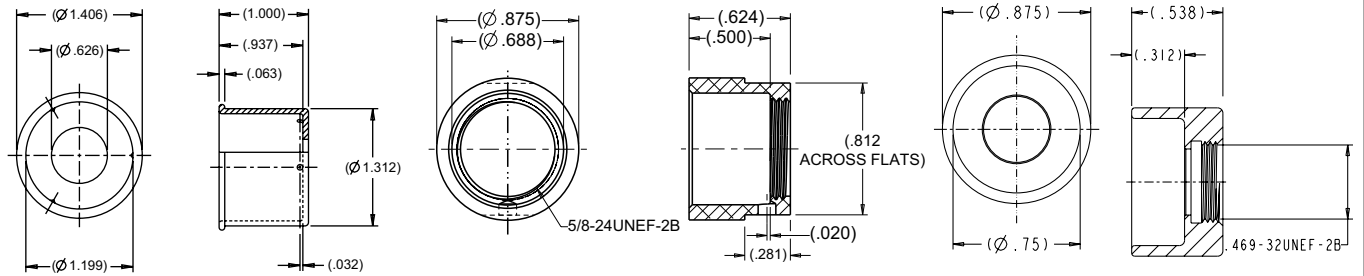
**Finish:**

Black anodized. For other color options, contact factory.



**OTTO P/N C300793**

**OTTO P/N C300428**



**OTTO P/N C300302**

**OTTO P/N C300871**

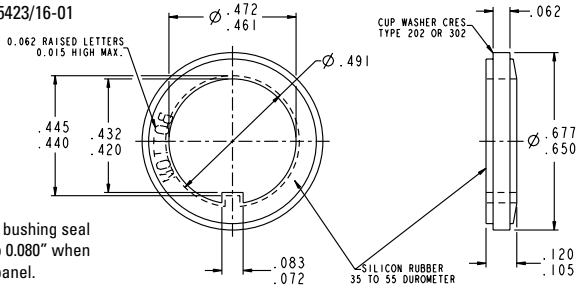
**OTTO P/N C300426**

### Panel Seals

Stainless steel cup washer with silicone rubber seal assures proper watertight panel seal. Mounts behind panel. Approved to MIL-DTL-5423/16. Designed for sealing 15/32" bushing with keyway.

OTTO P/N: 710196

MIL P/N: M5423/16-01



Thickness of bushing seal is reduced to 0.080" when mounted to panel.

**Gaskets**

OTTO P/N	I.D.
700117	0.250"
700110	0.469"
700109	0.625"

**O-Rings (Buna)**

OTTO P/N	I.D.
802568-010	0.250"
802568-015	0.500"
802568-016	0.625"

### Mounting Hardware

**MILITARY P/N**

**OTTO P/N**

**BUSHING SIZE (inches)**

**KEYWAY WASHERS**

MS25081-C0	710081-C0	0.250"
MS25081-C4	710081-C4	0.469"
MS25081-C6	710081-C6	0.625"

**INTERNAL TOOTH LOCKWASHERS**

MS35333-135	710333-135	0.250"
MS35333-136	710333-136	0.469"
MS35333-138	710333-138	0.625"

**HEX NUTS—STANDARD**

MS25082-C14	710082-C14	0.250-40
MS25082-C21	710082-C21	0.469-32
MS25082-B11	710082-B11	0.625-24

**HEX NUTS—WIRE LOCKING**

MS21340-04	710340-04	0.469-32
MS21340-05	710340-05	0.625-24

All hardware is stainless steel except MS25082-B11 which is brass, black oxide plated.

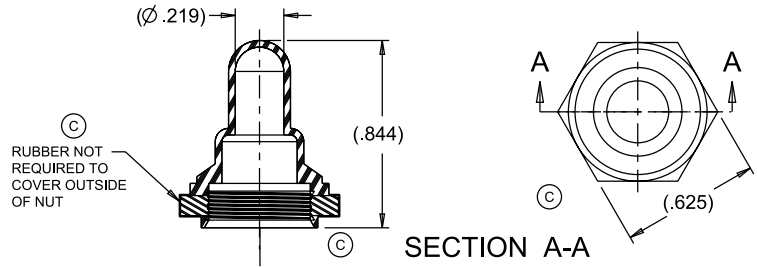
## SWITCH BOOTS, TOGGLE BOOTS AND HEX NUTS

HARDWARE

**P/N 740191**

T9 Toggle Boot with 15/32" Thread

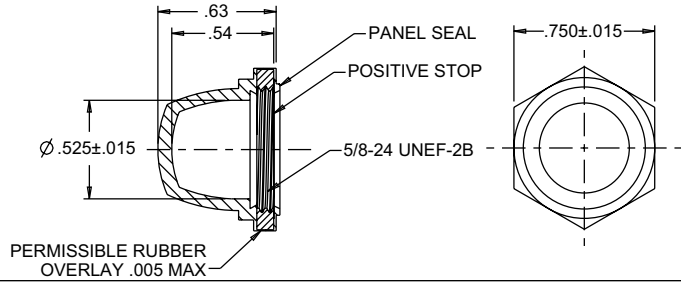
Boot: Black Silicone Rubber  
Nut: Brass, Nickel Plated



**P/N 700179**

P3-6 Pushbutton Sealed Hex Nut  
MIL-DTL-5423/7 Type B, Style 2, Size 4

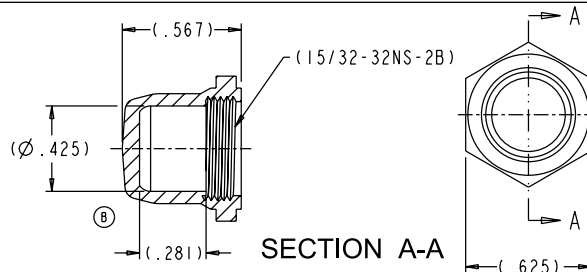
Material: Silicone Rubber  
700179-2S = Black, 700179-4S = Yellow  
700179-8S = Gray



**P/N 740144**

P4-4 Switch Boot with Threaded Insert

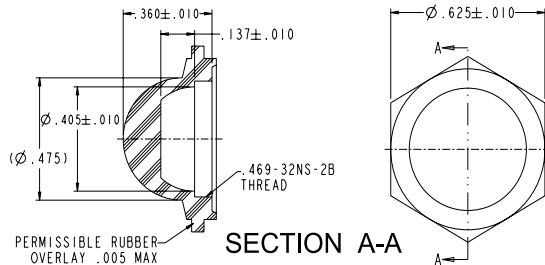
Boot: Black Silicone Rubber  
Insert: Brass, Nickel Plated



**P/N 701211**

P7-6 Pushbutton Boot Hex Nut

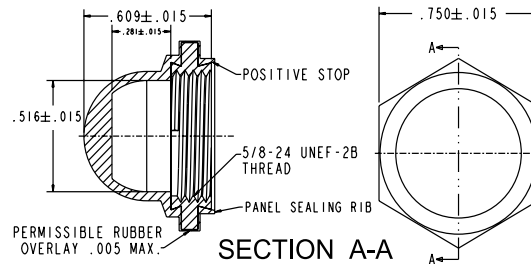
Material: Black Neoprene  
Thread: 15/32"



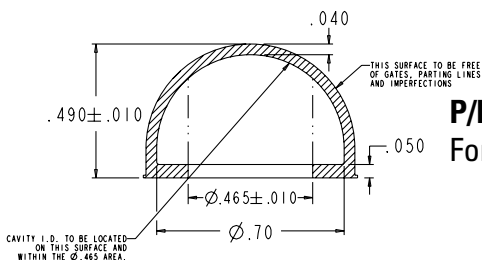
**P/N 701170**

P3-3, P3-6, P3-7 and P3-8 Pushbutton Boot

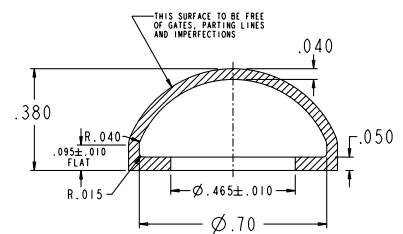
Material: Gray Silicone Rubber  
Thread: 5/8"



## P7/P9 Sealing Boots



**P/N 402246**  
For Raised Dome



**P/N 402339**  
For Flush Dome