



**WA6800E0K**

**User Guide**

**R01**

1.	Overview.....	3
1.1.	Requirement of Hardware.....	3
1.2.	Requirement of Software .....	3
2.	Hardware Introduction .....	4
2.1.	WA6800-00.....	4
2.2.	WA6800-C0.....	4
2.3.	WA6800-00 Demo Board (WA6800-00 + WA6800-C0) .....	5
3.	Timing of Mode Light Definition.....	5
3.1.	For IOS System .....	5
3.2.	For Android System .....	5
3.3.	.....	6
4.	Demo with IOS system.....	6
4.1.	WAC function .....	6
4.2.	SoftAP function .....	9
5.	AirFun App (Android and IOS) .....	13
5.1.	APK install .....	13
5.2.	SoftAP mode .....	14
5.3.	Play music file in USB storage.....	16
5.4.	DLNA mode setup .....	17
6.	Application of DLNA mode.....	18
6.1.	Demo by iTunes.....	19
6.2.	Demo by android original music player APK . .....	19

# 1. Overview

## Network Chart



- WA6800-00 Demo kit is a highly integrated audio decoder designed for playback and wireless streaming application which can be used for development and demo purpose.

### 1.1. Requirement of Hardware

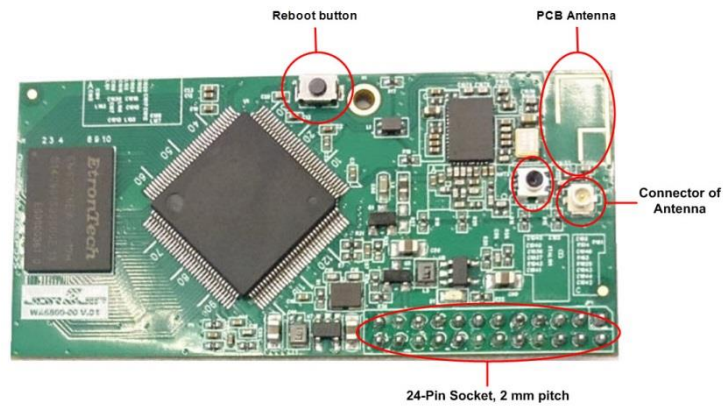
- WA6800-00
- WA6800-C0
- Adapter (5V / 1A)
- RF Antenna (Option)

### 1.2. Requirement of Software

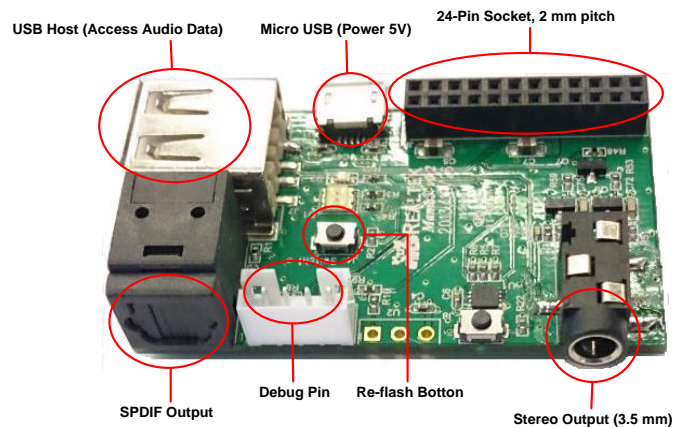
- IOS 7 System
- Android System
- Realtek AirFun

## 2. Hardware Introduction

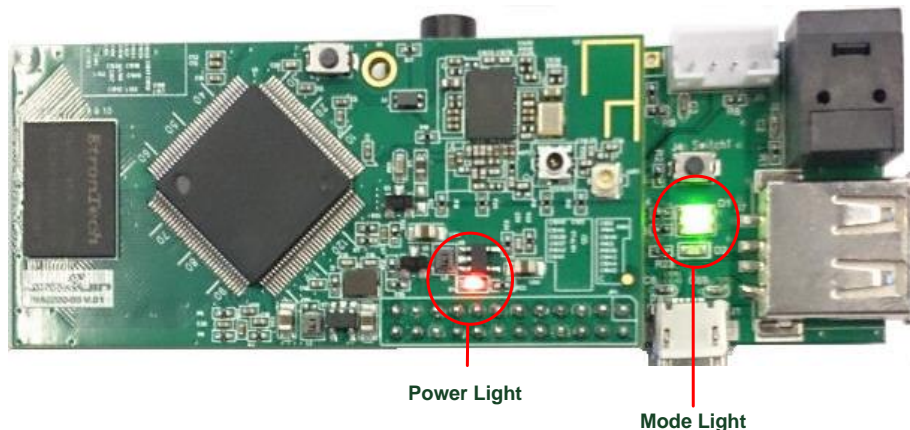
### 2.1.WA6800-00



### 2.2.WA6800-C0



## 2.3.WA6800-00 Demo Board (WA6800-00 + WA6800-C0)



## 3. Timing of Mode Light Definition



### 3.1.For IOS System

At starting 180 seconds, IOS system will define WA6800-00 as WAC mode. It's original function form IOS to config the WA6800 connect to the AP. The status of the mode light is green and flashing.

After 180 seconds, the Driver will reload and IOS system will define the WA6800-00 as SoftAP mode. You can connect your IOS device with the WA6800 directly.

The status of the mode light will be red.

### 3.2.For Android System

Android system will define the WA6800-00 as SoftAP mode after power on. Please note that after the driver reload at 180 seconds. The connection of the device with WA6800-00 will be disconnect. You will need to re-create the connection after driver reload.

### 3.3.

3.3.1 If you config the WA6800-00 connect to the AP before the driver reload.

3.3.2 The mode light will be stable green and not get into the driver reload step.

3.3.3 The 180 second period which is define by software setting.

## 4. Demo with IOS system.

### 4.1.WAC function

Step 1 : Go to “Settings”



Step 2 : Select the “AirFun XXXX” from the WiFi list

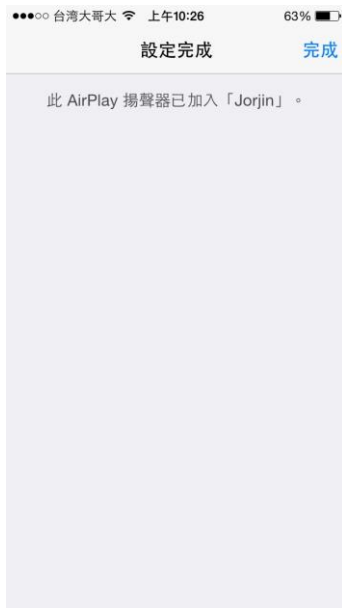
Note : AirFunXXXX is the device code, it will be varied from one to the other device.



Step 3: Choose an Ap then click next button.

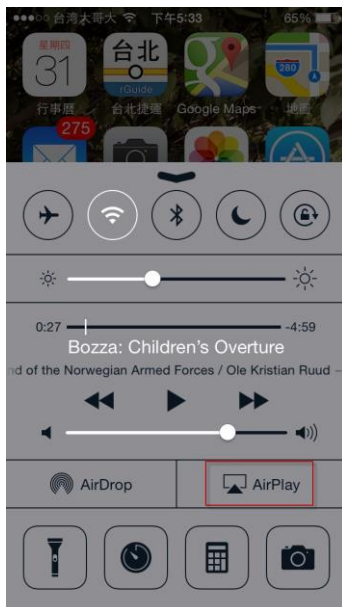


Step 5 : If the WA6800-00 Demo Kit connects successfully, the window will show “Setup Complete” as below

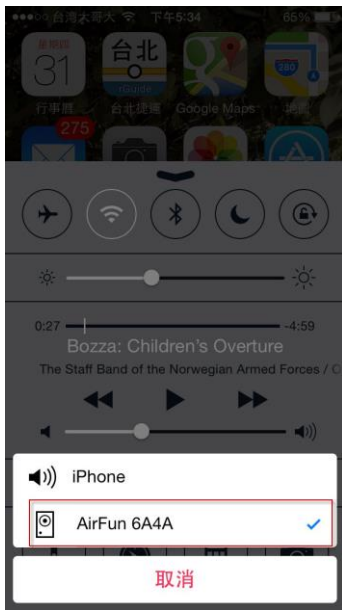


Step 6 : Select the “AirPlay” in Control Center

Note : To slide the screen from bottom to up to appear the control center

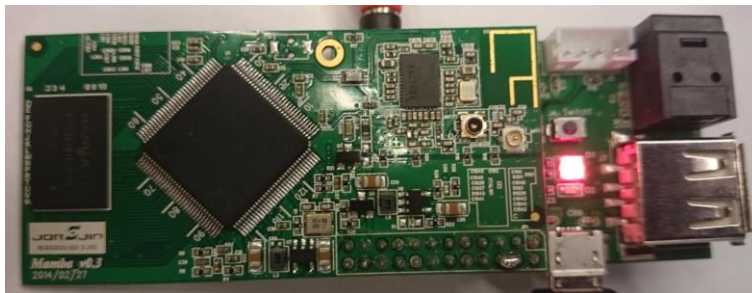


Step 7 : Setup AirFunXXXX to be new speaker



## 4.2. SoftAP function

Step1: Waiting 180 seconds for get into the SoftAP mode.  
(Mode light will change to Red LED)



## Step 2 : Go to “Settings”

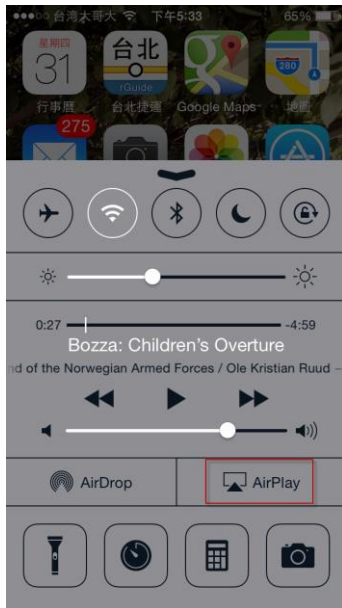


## Step 3: Choose the AirFunXXXX

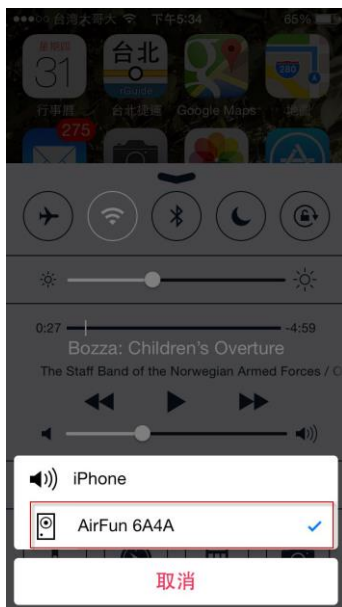


Step 4 : Select the “AirPlay” in Control Center

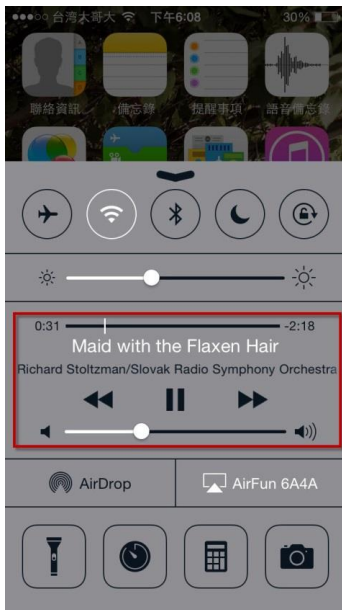
Note : To slide the screen from bottom to top to appear the control center



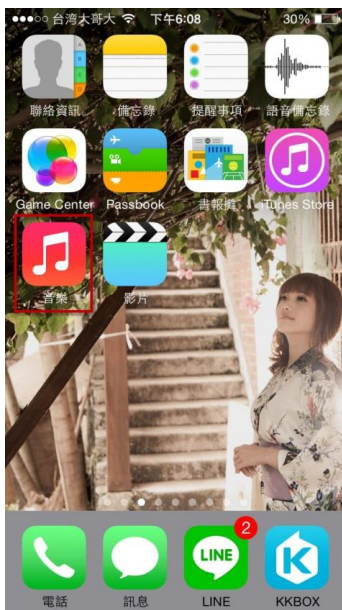
Step 5 : Setup AirFun XXXX to be new speaker



Step6-1: play the music by IOS interface directly.



Step6-2: play the music by "MUSIC" app.



## 5. AirFun App (Android and IOS)

### 5.1.APK install

Search and install the AirFun APP in apple store or android Market



## 5.2.SoftAP mode

Step 1: Press the button of “AirFun”

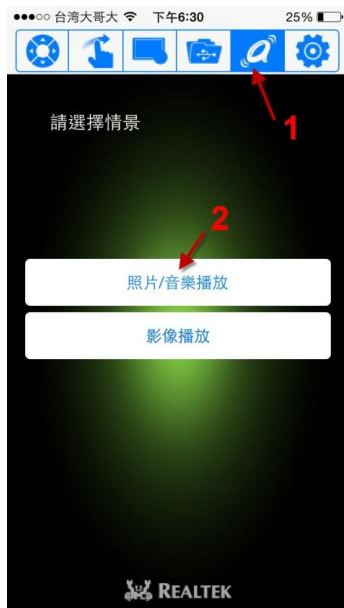
Note : Before the press button, the device needs to connect WA6800-00 Demo Kit by Wi-Fi directly.



Step 2 : Select the device name (Sample is AirFun A112)



### Step 3 : Click play music

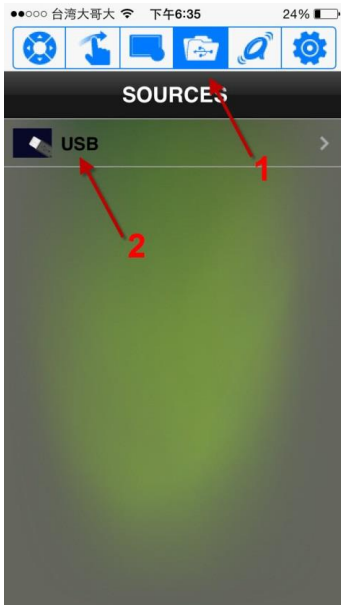


### Step 4: Choose a song and click play button



### 5.3.Play music file in USB storage.

Step1:click the USB file icon then choose the USB.



Step2 : choose a song to play

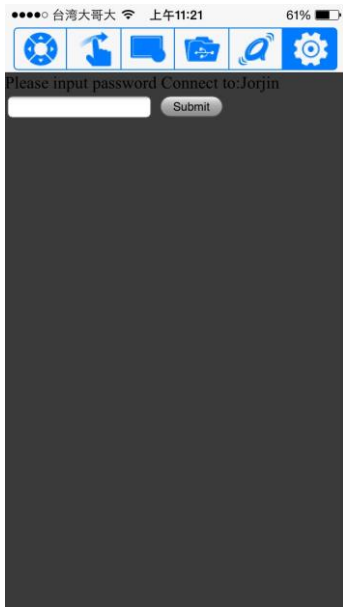


## 5.4.DLNA mode setup

Step1: Click setting button and choose an AP



Step2: Input the PW of AP



Step3: Click OK button to finish the Setting.



## 6. Application of DLNA mode

Step1. Config WA6800-00 to the AP (please refer the section 4.1 WAC function for IOS system, section 5.4 to use the AirFun apk)

Step2: Config your pc to same network with WA6800

## 6.1.Demo by iTunes

Step3: turn on the iTunes on your PC.

Step4: click the Airplay icon.

Step5: choose the Air Fun XXXX



## 6.2.Demo by android original music player APK .

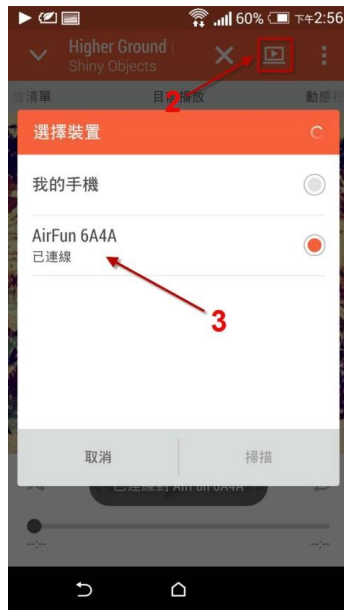
### 6.2.1 HTC

Step1: click the Music icon



Step2: click select device icon

Step3: Choose AirFun XXXX



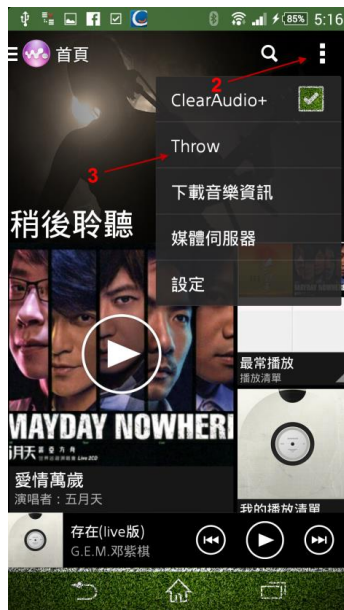
## 6.2.2 Sony

Step1: click the Walkman icon



Step2: click select icon

Step3: click "Throw"



Step4: Choose AirFun XXXX



## 6.2.3 Samsung

Step1: click the Music icon



Step2: click select device icon

Step3: Choose AirFun XXXX

