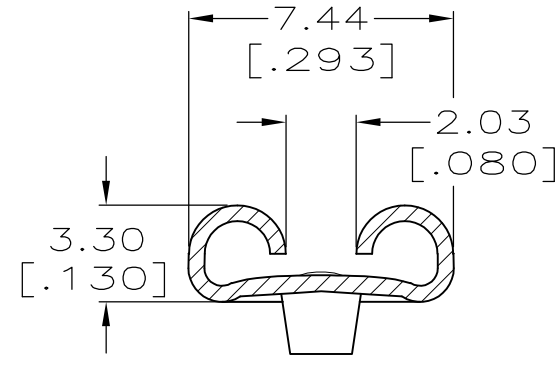
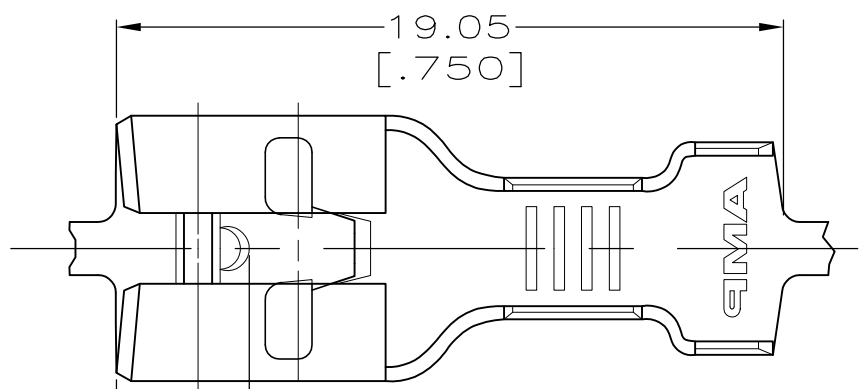
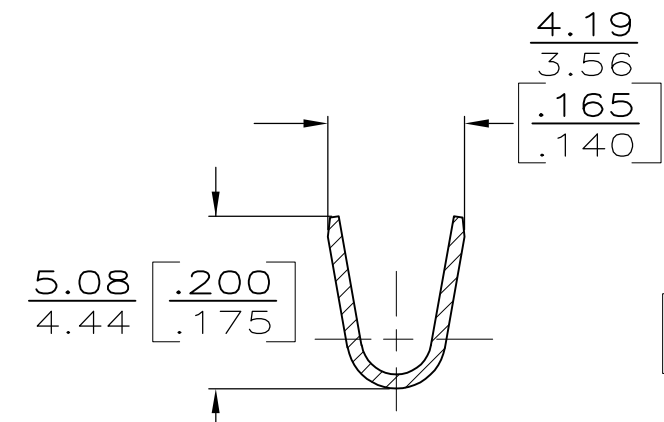
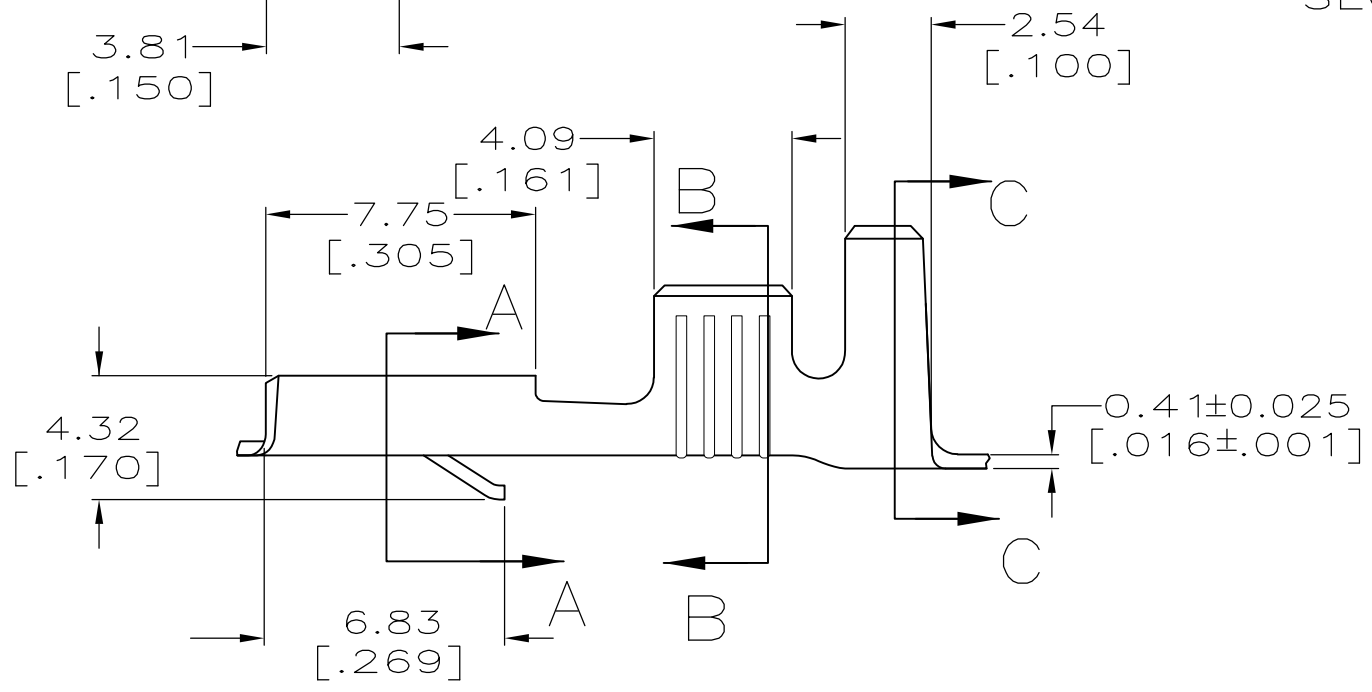


LOC	DIST	REVISIONS					
AF	50	P	LTR	DESCRIPTION	DATE	DWN	APVD
		E1		REVISED PER ECO-11-004820	11MAR11	RK	HMR

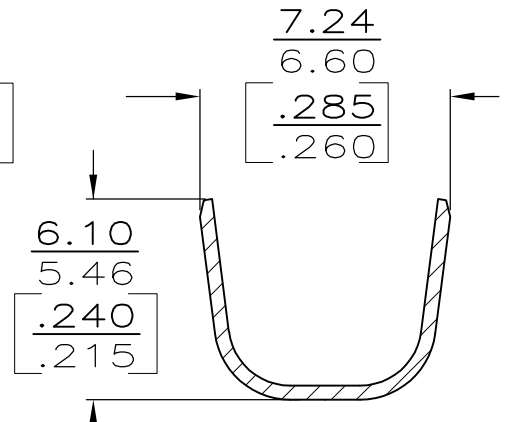
- 1 CONTINUOUS STRIP ON REELS.
- 2 ACCEPTS WIRE SIZE [#16-#12 OR TWO #16'S].
- 3 INSULATION RANGE TO BE 4.06-5.33 [.160-.210] OR TWO 3.30 [.130] MAX DIA.
- 4 MATING TAB THK IS 0.81 [.032±.001].
- 5 INTERLEAVING PAPER REQUIRED. ±0.025
- 6 PRELIMINARY - NOT FOR PRODUCTION



SECTION A-A



SECTION B-B



SECTION C-C

5	0.002032 [.000080] MIN TIN	6	60249-5
	0.000381 [.000015] THK SILVER		60249-3
	0.002032 [.000080] MIN TIN		60249-2
	-		60249-1
	FINISH		PART NO

THIS DRAWING IS A CONTROLLED DOCUMENT.		DWN	JR RUTH	7/14/95	TE Connectivity NAME RECEPTACLE, FASTIN-FASTON, 6.35 [.250] SERIES
DIMENSIONS: mm[INCHES]		CHK	MS FEHER	7/14/95	
TOLERANCES UNLESS OTHERWISE SPECIFIED:		APVD	J GILLESPIE	7/14/95	
0 PLC ± - 1 PLC ± - 2 PLC ± 0.38 [.015] 3 PLC ± - 4 PLC ± - ANGLES ± -		PRODUCT SPEC	-		
MATERIAL	H04 BRASS	FINISH	SEE TABLE	APPLICATION SPEC	114-2025
		WEIGHT	-	SIZE	A3
		CUSTOMER DRAWING		CAGE CODE	00779
				DRAWING NO	C-60249
		SCALE	5:1	SHEET	1 OF 1
				RESTRICTED TO	-
				REV	E1