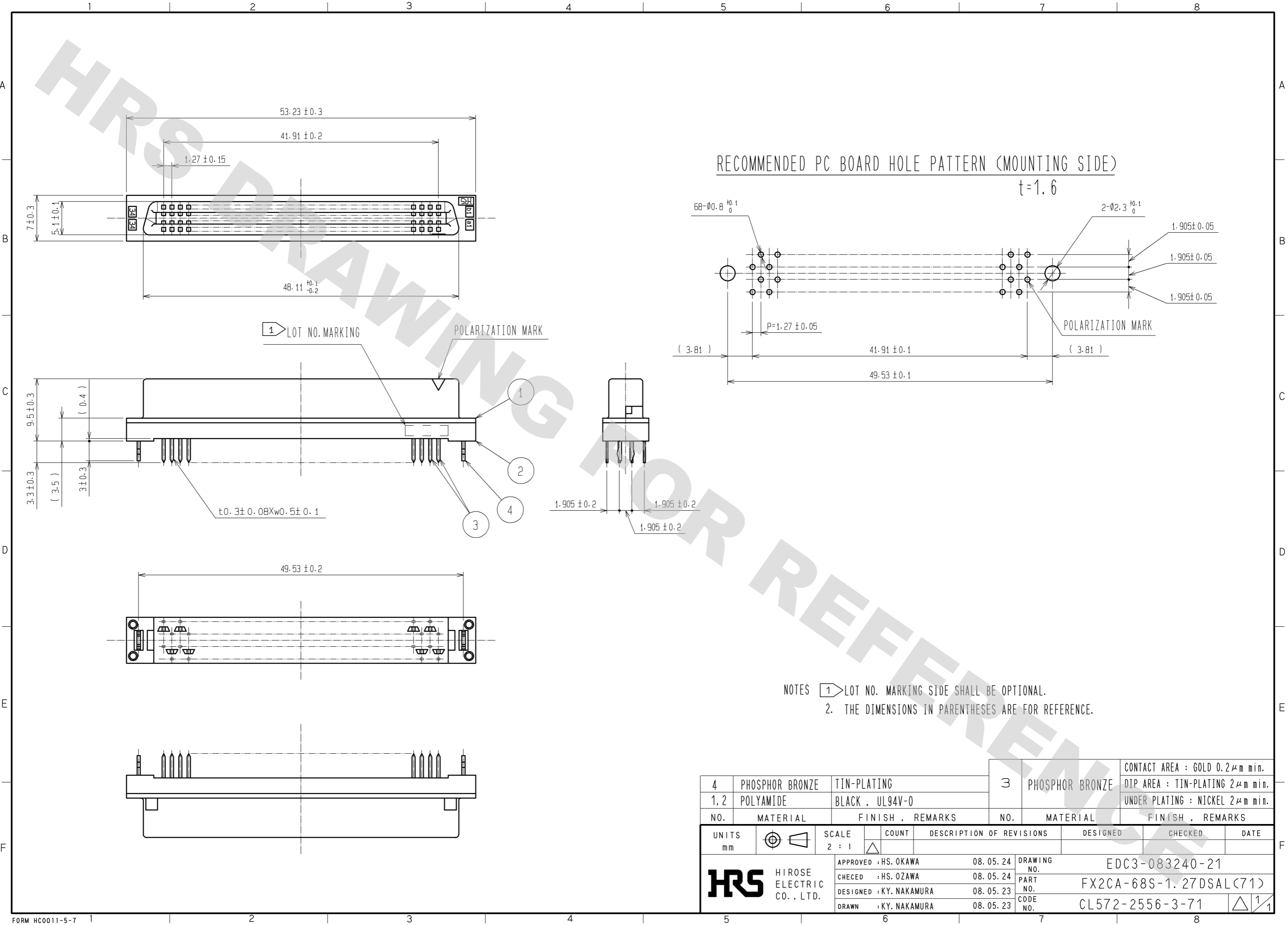


DRAWING FOR REFERENCE: This is subject to change without notice
08/11/2012



NOTES 1 LOT NO. MARKING SIDE SHALL BE OPTIONAL.
2. THE DIMENSIONS IN PARENTHESES ARE FOR REFERENCE.

4	PHOSPHOR BRONZE	TIN-PLATING	3	PHOSPHOR BRONZE	CONTACT AREA : GOLD 0.2μm min. DIP AREA : TIN-PLATING 2μm min. UNDER PLATING : NICKEL 2μm min.		
1.2	POLYAMIDE	BLACK , UL94V-0					
NO.	MATERIAL	FINISH , REMARKS	NO.	MATERIAL	FINISH , REMARKS		
UNITS mm		SCALE 2 : 1	COUNT △	DESCRIPTION OF REVISIONS	DESIGNED	CHECKED	DATE
HRS HIROSE ELECTRIC CO., LTD.		APPROVED : HS. OKAWA	08.05.24	DRAWING NO.	EDC3-083240-21		
		CHECKED : HS. OZAWA	08.05.24	PART NO.	FX2CA-68S-1.27DSAL(71)		
		DESIGNED : KY. NAKAMURA	08.05.23	CODE NO.	CL572-2556-3-71		
		DRAWN : KY. NAKAMURA	08.05.23		△ 1/1		