

---

## Aluminium Standard

The Aluminium standard range is the standardized enclosure system for industrial applications.

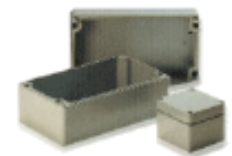
The robust enclosure range with IP 65 Protection classification is suitable for mounting:

- electric/electromechanical components such as terminals, push buttons, circuit elements and relay modules
- electronic assemblies with PCB's or fieldbus modules.

The enclosures are mainly used in:

- mechanical and control engineering, plant manufacturing
- electrical / building installations
- instrumentation and control
- EMC-related applications
- heating, air-conditioning, ventilation technology 43 different versions are available, representing a fine-tuned product spectrum in sizes from 45 x 50 x 30 mm up to 600x600x200 mm.

As a useful feature in applications that do not allow the enclosure to be opened



**Aluminium**

### Technical data

**Material:** AL Si 12, DIN 1725

**Ingress protection Standard:** IP 66 to EN 60529

**Flange:** IP 65 to EN 60529

**Impact resistance:** > 7 Nm, EN 50014

**Temperature stability:** -40° to +90° C, PUR (polyurethane)

while mounting three enclosure designs are available that have external fastening channels permitting free access.

A wide range of accessories rounds off the universal character of this enclosure family.

Programme range

Order no	WxLxH(mm)	Order no	wxLxH(mm)	Order no	wxLxF(mm)
01.05 05 03	45 x 50 x 30	01.12 22 08	120x220 x 80	01.23 28 11	230x280 x110
01.06 06 03	64 x 58 x 34	01.12 22 09	120x220 x 90	01.23 33 11	230x330 x110
01.06 10 03	64 x 98 x 34	01.12 36 08	120x360 x 80	01.23 33 18	230x330 x180
01.06 15 03	64 x150 x 34	01.14 14 09	140x140 x 90	01.23 40 11	230 x400 x110
01.06 19 03	64 x185 x 34	01.14 20 09	140x200 x 90	01.23 40 23	230 x400 x224
01.08 08 06	80 x 75 x 57	01.16 16 09	160x160 x 90	01.23 60 11	230 x600 x110
01.08 13 06	80 x125 x 57	01.16 26 09	160x260 x 90	01.31 40 11	310 x400 x110
01.08 18 06	80 x175 x 57	01.16 36 09	160x360 x 90	01.31 40 14	310 x400 x140
01.08 25 05	80 x250 x 52	01.16 56 09	160x560 x 90	01.31 40 18	310 x400 x180
01.10 10 08	100x100 x 80	01.18 18 10	180x180 x100	01.31 40 23	310 x400 x226
01.10 16 08	100x160 x 80	01.18 28 10	180x280 x100	01.31 60 11	310 x600 x110
01.10 20 08	100x200 x 80	01.23 10 11	100x230 x110	01.31 60 18	310 x600 x180
01.12 12 08	120x122 x 80	01.23 20 11	230x200 x110	01.60 60 20	600 x600 x200
01.12 12 09	120x122 x 90	01.23 20 18	230x200 x180		

seal, solid foam  
 -40° to +100°C, CR  
 (chloroprene) seal,  
 solid foam (round  
 seal)  
 -60° to +130° C, VMQ  
 (silicone) seal, solid  
 foam (round seal)  
**Paint:** powder coating  
**Colour:** silver-grey,  
 RAL 7001 special paint  
 on request

Flange Enclosures	
11.23 20 11	230 x200 x110
11.23 28 11	230 x280 x110
11.23 40 11	230 x400 x110
11.23 60 11	230 x600 x110

Field Enclosures With External Fixing	
01.06 12 00	64 x115 x34.5
01.06 19 00	64 x186 x34.5