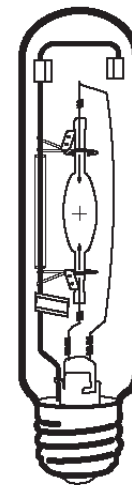


HIT 70W/U/LU/740
Product Number: 13742
Lamp Type: White-Lux Plus

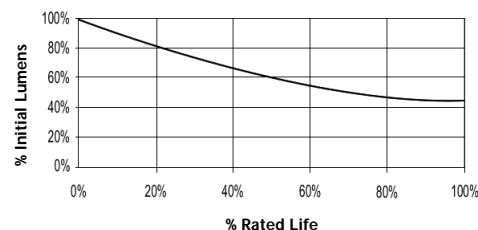
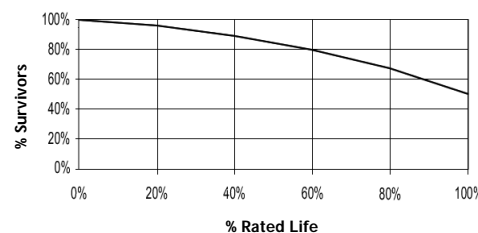
Performance Data

Light Output (Lumens @ 100 hours)	5300
Lamp Lumens Per Watt	76
Rated Life (Hrs. @ 10 Hr. /Start)	15000
Correlated Colour Temperature (K)	4000
Chromaticity (CIE - X Y)	385, 390
Colour Rendering Index (CRI) or (Ra)	68
Typical Warm Up Time (Minutes)	1-2
Typical Hot Restart Time (Minutes)	1-2
Burning Position	Universal



Physical Data / Requirements

Base Designation	E27
Bulb Designation	T38
Bulb Diameter (mm)	38
Max. Overall Length (mm)	156
Light Centre Length (mm)	102
Effective Arc Length (mm)	9
Max. Base Temperature (°C)	210
Max. Bulb Temperature (°C)	450
Luminaire Type	Enclosed
Socket Pulse Rating (KV)	2.8
Mercury Content (mg)	8.5

Lumen Maintenance

Lamp Mortality


Lamp Electrical Data / Requirements

IEC Standard	-
Lamp Wattage (W)	70
Lamp Operating Voltage (V)	85
Lamp Operating Current (Amps)	0.9
Min. Open Circuit Voltage (RMS)	198
Min. Starting Pulse (Peak V)	1800-4500
Min. Pulse Width at 1600V (microseconds)	1
Min. Pulse Rate Per 1/2 cycle	1
Pulse Position (Electrical Degrees)	60-90, 240-270

Revision: 11.06.12

Notes:

- 1) This Product Specification contains data about typical performance at nominal power. Actual values may depend on ballast and applications. Complies with (CE), Low Voltage (CE), WEEE and RoHS Directives.
- 2) Lamp data is based on vertical operation. For horizontal operation lumen output will be reduced by 10% and lamp life reduced by 25%.