

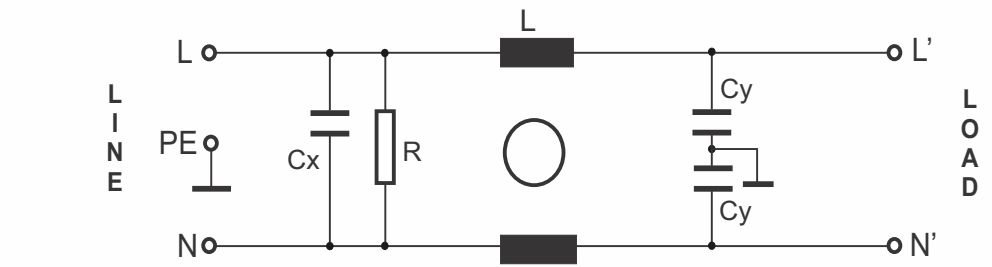
RES10F13

Rev. 0

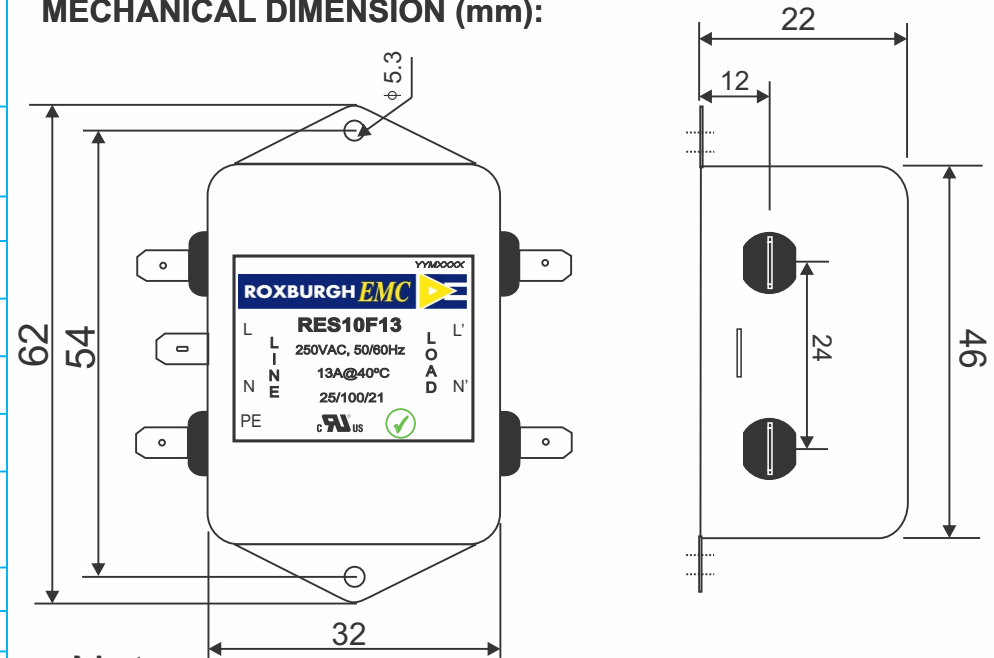
CIRCUIT DIAGRAM:

CHARACTERISTICS:

Rated Voltage:	250VAC max	
Rated Current at Ambient:	13A @ 40°C	
Operating Frequency:	DC-400HZ	
Climatic Class (IEC60068-1):	25/100/21	
Temperature Range:	-25°C to +100°C	
Over load Current:	1.5 x Rated Ct. for 1 Min	
Operational Leakage current : (at 230VAC/50Hz and Total C +/-20%)	0.74 mA max	
Worst case Leakage current : (N interrupted and Total C +/-20%)	<1.11 mA max	
DCR @ 25°C (+/-25%) :	25 mΩ	
Test Voltage (100%) for 2 sec:-	L-N: 1100VDC	
	L-GND: 3000VDC	
Ingress Protection:	IP 20	
Weight (Approximate):	70 gr	
FILTER PARAMETERS:	Total Inductance (L-L'+N-N') @10KHz:	0.7mH +50%,-30%
	Total Capacitance (L-L/L-N) @1KHz:	0.1µF +/- -20%
	Total Capacitance (L/N-GND) @1KHz:	9.4nF +/- -20%
	Total Resistance (L-L/L-N):	1M Ω +/- -10%
	Total Resistance (L/N-GND):	



MECHANICAL DIMENSION (mm):



Note:

Housing matl. Fe with Ni Plated
Fast-On Terminal (6.3 x 0.8mm)
Connections

APPROVALS: REACH
RoHS
UL

APPROVED
BY
AJAY

Date: 24-03-2014



Tel:- +44(0) 1724 273200
email:- sales@dem-uk.com
web :- www.dem-uk.com/roxburgh

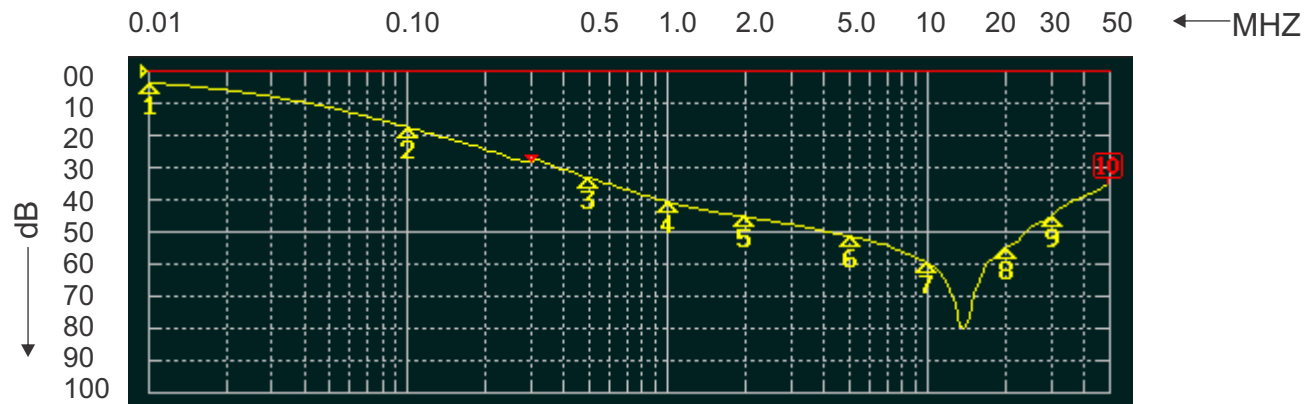
TOLERANCE: +/-1.0 mm



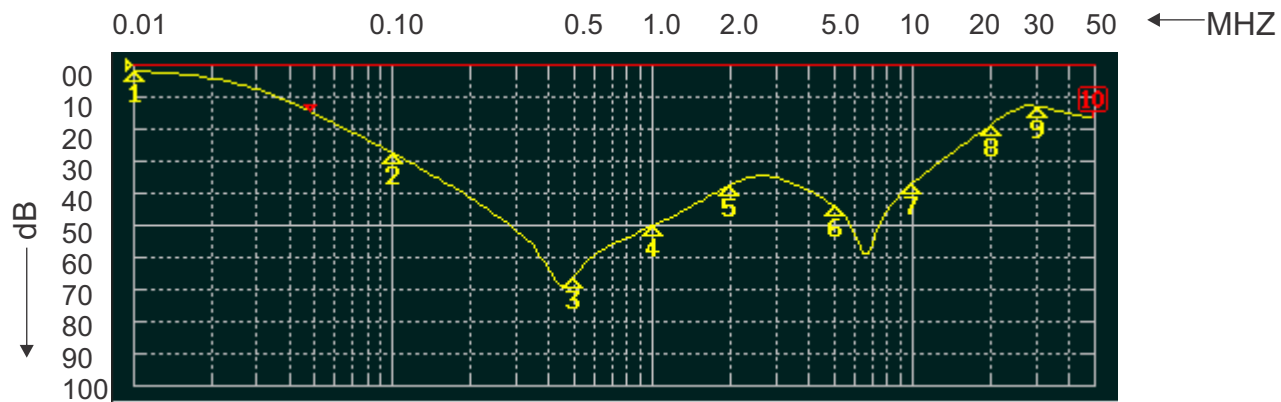
ROXBURGH EMC

FILTER INSERTION LOSS CHARACTERISTICS CISPR 17 - 50 OHM METHOD

RES10F13



COMMON MODE



DIFFERENTIAL MODE

