

Data Sheet

AmS1Stop



amGard safety gate switch solutions consist of a range of 'Control interlocks'. The control Interlocks are split into gate switches (Stops) and solenoid Interlocks (Loks). Combining tamper proof locking mechanisms and dual channel safety circuitry amGard is suitable for category 4 applications.

description:

the AmS1Stop combines trapped key safety and electrical gate switch technology, allowing fast and frequent access and providing a safety key. Designed for full body access areas. Dual channel safety circuitry means this product complies with the latest EU safety legislation and is suitable for performance category 3 and 4 applications (EN 954-1). This lock is used to control access to enclosed areas until a safe condition has been achieved.



operation:

the sequence is for the bolt and key to be trapped, to gain access the key must be turned and removed. This action will perform two functions, one is to change the state of the electrical contacts (isolating the power) and the other is to allow the bolt to be rotated through 90° and removed, therefore granting access.

options:

Engraving:-

A

B

www.fortressinterlocks.com

Technical Data

AmS1Stop



Technical Specification

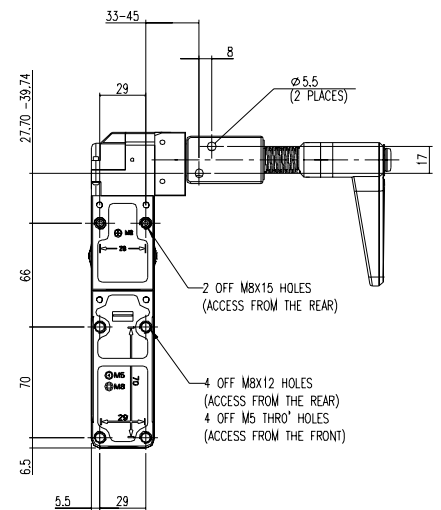
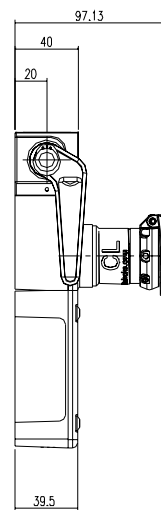
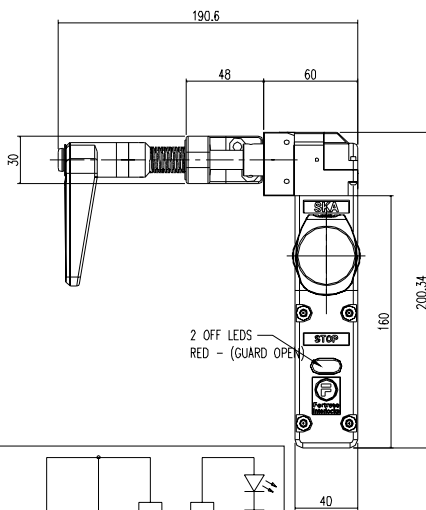
Housing Materials	Zinc Alloy to BS1004A Stainless Steel to BS3146
Paint Finishes	Gloss Polyester Powder Coat on Passivated Base Material
Colour	Red and Stainless Steel
Ingress Protection	IP67
Operating Force	5Nm
Retention Force Locked	2500N
Maximum Approach Speed	20m/minute
Mechanical Life	>1,000,000 Switching Cycles
Maximum Frequency of Ops	7,200 per Hour
Ambient Temperature	-5°C to +40°C
Maximum Wire Cross- Section to fit connector	2.50mm ²
Connector Type	Spring Activated Vibration Proof Block
Switches Conformance	DIN VDE 0660 Part 206 & IEC 947-5-1

Technical Specification

Switching Contact Element	2NC and 1NO
Switching Principal	Positive Break
Switch Control	3A
Switching Voltage	230V AC Max
Isolating Distance	2 x 2mm Per Switch Element
Element Contact Material	90% Silver and 10% Nickel
Utilization Category	AC 15 or DC 13
Control Voltages	24V AC/DC, 48V AC/DC, 110V AC, 220V AC or 230V AC
Insulating Resistance	20M Ohm

Features & Benefits

- Non-Solenoid Controlled
- LED Status indicators for greater control
- Dual channel safety circuitry
- Suitable for category 4 applications



Wiring Diagram

