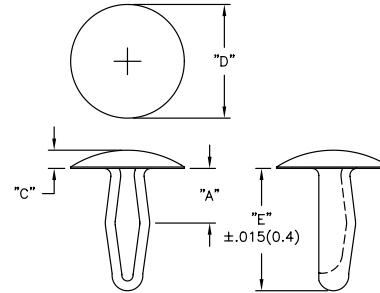
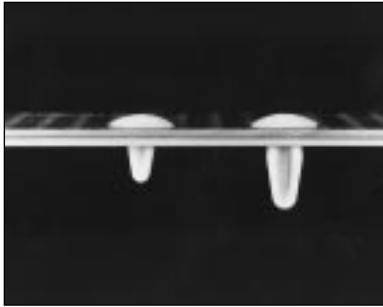


# RIVETS, BUMPERS & FEET

## MMB Series Mini-Mounting Button



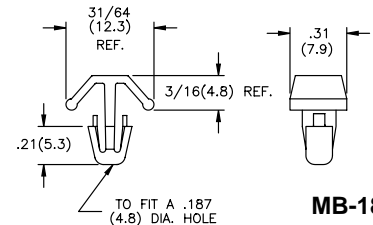
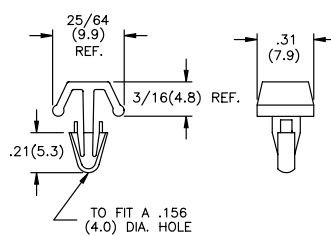
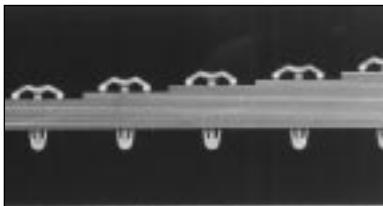
**NOTE:**  
Other head styles and sizes available by special order

Material: Nylon 6/6, RMS-01  
Color: Natural or Black, specify when ordering

Part No.	Standard Pack: 1000 per bag				
	Hole Size	Material Thickness "A"	Head Height "C"	Head Dia. "D"	Body Length "E"
MMB-125-01	.123 (3.1) - .127 (3.2)	.08 (2.0) - .10 (2.5)	.04 (1.0)	.27 (6.9)	.33 (8.4)
MMB-136-01	.131 (3.3) - .141 (3.6)	.12 (3.0) - .16 (4.1)	.07 (1.8)	.41 (10.4)	.44 (11.2)
MMB-187-01	.182 (4.6) - .192 (4.9)	.10 (2.5) - .16 (4.1)	.09 (2.3)	.50 (12.7)	.43 (10.9)
MMB-250-01	.247 (6.3) - .253 (6.4)	.10 (2.5) - .22 (5.6)	.09 (2.3)	.50 (12.7)	.64 (16.3)

Flame Retardant Nylon, RMS-19 available by special order. To order, replace -01 with -19.  
To order black, use Part No. MMB-XXX-01B.

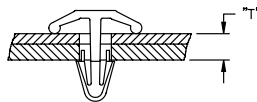
## MB Series Mounting Button



### Features

- Ideal for applications where metal screws or rivets cannot be used
- Barbed arrow locks securely; releasable from underside of board

### MB-156

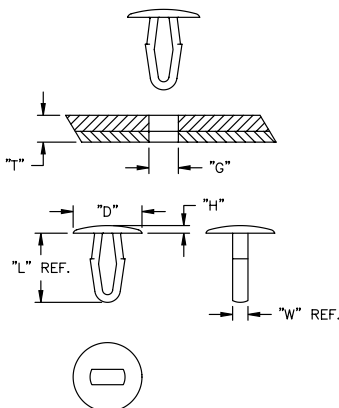


Material: Nylon 6/6, RMS-01 • Color: Natural

Part Number		Standard Pack: 1000 per bag
		"T" Recommended
MB-1-156	MB-1-187	1/32 (0.8) - 3/32 (2.4)
MB-3-156	MB-3-187	3/32 (2.4) - 5/32 (4.0)
MB-5-156	MB-5-187	3/16 (4.8) - 7/32 (5.6)
MB-7-156	MB-7-187	7/32 (5.6) - 9/32 (7.1)
MB-9-156	MB-9-187	5/16 (7.9) - 3/8 (9.5)
MB-11-156	MB-11-187	3/8 (9.5) - 7/16 (11.1)
MB-13-156	MB-13-187	7/16 (11.1) - 1/2 (12.7)
MB-15-156	MB-15-187	1/2 (12.7) - 9/16 (14.3)
MB-17-156	MB-17-187	9/16 (14.3) - 5/8 (15.9)

Flame Retardant Nylon, RMS-19 available by special order.  
To order, add -19

## DF Series Drive Fasteners



Material: Acetal, RMS-14 or V-0 Rated Polyester

Part No.	Standard Pack: 1000 per bag						
	Material: Acetal, RMS-14 Color: White	Material: V-0 Rated Polyester Color: Natural	"G" Hole Diameter ±.002 (0.05)	"T" Total Thickness Range	"D" .010 (0.25)	"H" ±.010 (0.25)	"L" Ref.
DF-137-010	DFV0-137-010	.126 (3.2)	.039 (1.0) - .177 (4.5)	.315 (8.0)	.059 (1.5)	.512 (13.0)	.106 (2.7)
DF-137-020	DFV0-137-020	.153 (3.9)	.039 (1.0) - .197 (5.0)	.354 (9.0)	.063 (1.6)	.551 (14.0)	.116 (2.9)
DF-137-030	DFV0-137-030	.185 (4.7)	.039 (1.0) - .216 (5.5)	.394 (10.0)	.067 (1.7)	.590 (15.0)	.134 (3.4)
DF-137-031	DFV0-137-031	.185 (4.7)	.039 (1.0) - .216 (5.5)	.394 (10.0)	.114 (2.9)	.590 (15.0)	.134 (3.4)
DF-137-040	DFV0-137-040	.252 (6.4)	.059 (1.5) - .256 (6.5)	.472 (12.0)	.079 (2.0)	.669 (17.0)	.153 (3.9)
DF-137-050	—	.307 (7.8)	.059 (1.5) - .275 (7.0)	.551 (14.0)	.087 (2.2)	.748 (19.0)	.166 (4.2)
DF-137-060	—	.216 (5.5)	.236 (6.0) - .354 (9.0)	.472 (12.0)	.079 (2.0)	.709 (18.0)	.150 (3.8)

### Features

- Hollow body increases flexibility during insertions and removal process