

Rittal – The System.

Faster – better – everywhere.

► Base/plinth trim panels, side, 100 mm for base/plinth components front and rear – TS 8601.025

Date : Aug 26, 2014

ENCLOSURES

POWER DISTRIBUTION

CLIMATE CONTROL

IT INFRASTRUCTURE

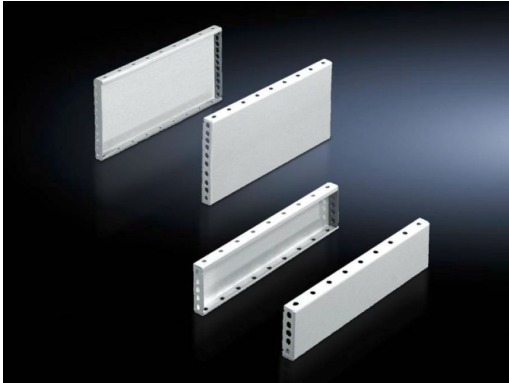
SOFTWARE & SERVICES

FRIEDHELM LOH GROUP



Base/plinth trim panels, side, 100 mm for base/plinth components front and rear – TS 8601.025

created : 26.08.2014 build on www.rittal.com/uk-en



Product description

Description: For mounting between the base/plinth components. At 200 mm height, two 100 mm base/plinth trims may be used. Base/plinth trims may be installed rotated through 90° in order to stabilise bayed base/plinth components.

Material: Sheet steel

Surface finish: Spray-finished

Colour: RAL 7035

Supply includes: 1 set = 2 base/plinth trim panels, including parts for attaching to the base/plinth components.

Note: When mounting base/plinth trim panels rotated through 90°, the base/plinth baying brackets are required

Packs of: 1 set(s)

EAN: 4028177519985

Customs tariff number: 94039010

Product features

To fit: Enclosure type: TS 8
CM
TP
PC
IW
TS IT


Depth: 1200 mm

Dimensions: Height: 100 mm

Weight: 2.6 kg

Downloads

Data sheets:  [Technical details \(EN\)](#)

Documentation:  [Instructions \(EN, DE\)](#)

CAD drawings: Request
