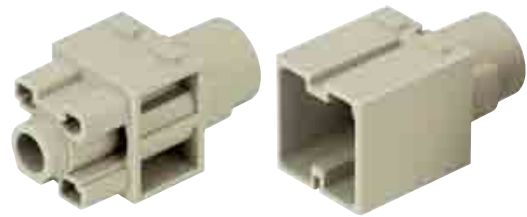


Number of contacts

1



Identification	Part number		Drawing	Dimensions in mm
	Male insert (M)	Female insert (F)		
Crimp terminal Modul	09 14 001 3001	09 14 001 3101		
Removal tool for TC contacts in 200 A crimp module	09 99 000 0820	09 99 000 0820		

Han
Modular

Identification	Wire gauge (mm ²)	Part number		Drawing	Dimensions in mm															
		Male contact	Female contact																	
Crimp contacts* silver plated																				
	25	09 11 000 6120	09 11 000 6220																	
	35	09 11 000 6121	09 11 000 6221																	
	50	09 11 000 6122	09 11 000 6222																	
	70	09 11 000 6123	09 11 000 6223																	
				<table border="1"> <thead> <tr> <th>Wire gauge</th> <th>∅</th> <th>Stripping length A</th> </tr> </thead> <tbody> <tr> <td>25 mm²</td> <td>7</td> <td>19 mm</td> </tr> <tr> <td>35 mm²</td> <td>8.2</td> <td>20 mm</td> </tr> <tr> <td>50 mm²</td> <td>10</td> <td>22.5 mm</td> </tr> <tr> <td>70 mm²</td> <td>11.5</td> <td>22.5 mm</td> </tr> </tbody> </table>	Wire gauge	∅	Stripping length A	25 mm ²	7	19 mm	35 mm ²	8.2	20 mm	50 mm ²	10	22.5 mm	70 mm ²	11.5	22.5 mm	
Wire gauge	∅	Stripping length A																		
25 mm ²	7	19 mm																		
35 mm ²	8.2	20 mm																		
50 mm ²	10	22.5 mm																		
70 mm ²	11.5	22.5 mm																		
				for stranded wire according to IEC 60 228 Class 5																

* Crimp zone acc. to DIN EN 46 235