

Dampers up to approx. 1.5 m<sup>2</sup>

**Modulating damper motor (24 V AC)**

**Control 0...10 V DC and position feedback 2...10 V DC**

**Self-adapting, automatic angle-of-rotation and running-time adjustment**

**Improved functional safety**

The damper motor has no limit switches and is overload-proof. It stops automatically when it reaches the damper or motor end-stop.

**Automatic commissioning, easy functional check**

When the power supply is first switched on, or when the override push button is pressed, the motor performs an automatic function test. It runs to each end position and, in the process, adapts its electrical working range of 2...10 V DC and running time of 150 s to the effective mechanical angle of rotation of the damper. After performing this function, the motor moves to the position demanded by the positioning signal. A functional check of damper operation is simplicity itself: the gearing can be disengaged by simply pressing a push-button on top of the case. While the pushbutton remains depressed, the damper can be operated by hand.

**Simple installation**

The damper motor is fitted with a universal spindle clamp for quick and easy mounting directly on the damper spindle. The motor is supplied with an anti-rotation strap for fixing it in position.

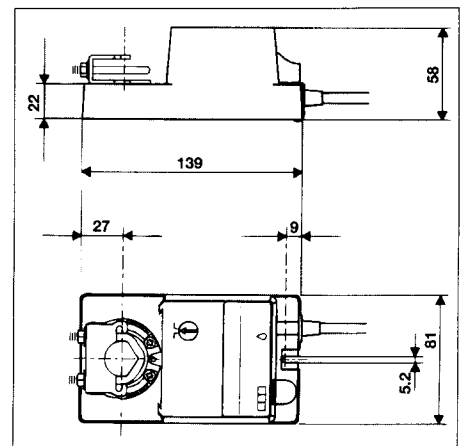
**Electrical accessories**

- ZAD 24 Digital position indicator
- SN 1, SN 2 Auxiliary switches
- SGA 24 Positioner
- SGF 24 Positioner
- SGE 24 Positioner

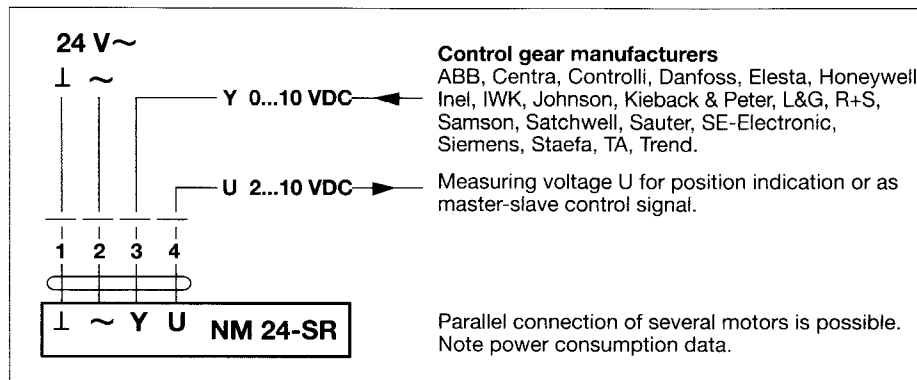
**Important**

Read the notes about the use and torque requirements of the damper motors on page 1 in the documentation 2.

**Dimensions**



**Wiring diagram**



Technical data	NM 24-SR
Power supply	24 V AC ± 20 % 50/60 Hz
Power consumption For wire sizing	1.3 W 3 VA
Protection class	III (safety low voltage)
Degree of protection	▲ drip-proof (IP 42)
Connecting cable	1 m long, 4 × 0.75 mm <sup>2</sup>
Angle of rotation	max. 95°, adjustable by mechanical stops
Torque	min. 8 Nm at rated voltage
Running time (0...8 Nm)	150 s, regardless of the mechanically limited angle of rotation from 0...35° ↯ to 0...95° ↯
Direction of rotation	selected with switch L ↷ / R ↶ (at Y = 0 V)
Manual operation	Push button, auto-return
Control signal Y	0...10 V DC (Input resistance = 100 kΩ)
Operating range	2...10 V DC for 0...100% angle of rotation
Override control	Y open = 0% angle of rotation Y at 24 V AC = 100% angle of rotation
Measuring voltage U	2...10 V DC (≤ 0.7 mA) for 0...100% angle of rotation
Synchronism tolerance	± 5%
Ambient temperature range	-20...+50 °C
Non-operating temperature	-40...+80 °C
Ambient humidity	Class D to DIN 40040
EMC emitted interference	to EN 50081-1
Sound power level	max. 35 dB (A)
Maintenance	maintenance-free
Weight	900 g

