

## Sensitive Low Pressure/Vacuum Switches (Series 1)

Stock N <sup>os</sup>			Pressure range
397-1107	397-1135	397-2302*	25.0-125.0 mbar (10.0-50.0 ins H <sub>2</sub> O)
397-1113	397-2368	397-1157*	62.5-500.0 mbar (25.0-200 ins H <sub>2</sub> O)
397-1129	397-1141	397-1163*	0.25-1.35 bar (3.6-20.0 P.S.I.)

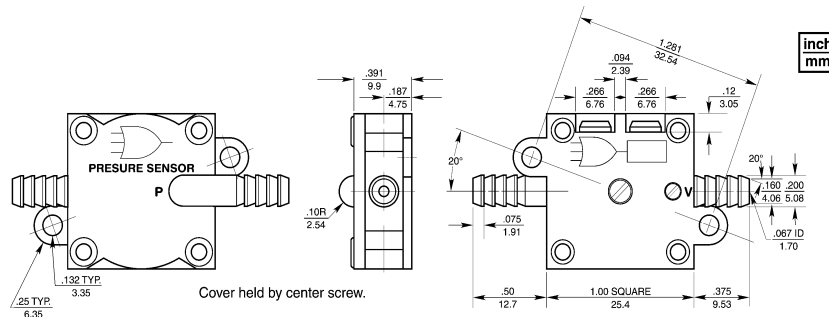
\* Pressure port only

Sensitive, field adjustable pneumatic switches, that have connections to both sides of the diaphragm. The switches can therefore be used in either pressure, vacuum or differential modes. The single pole contacts remain in the normally open position until a differential pressure is applied across the diaphragm. As the pressure is increased, the diaphragm causes the cantilevered contact blade to deflect. Because it is a slow make contact and there are no sliding or levering parts the switches have virtually no hysteresis or on-to-off mechanical differential. The switch electrical rating will be reduced when used at the minimum pressure setting.

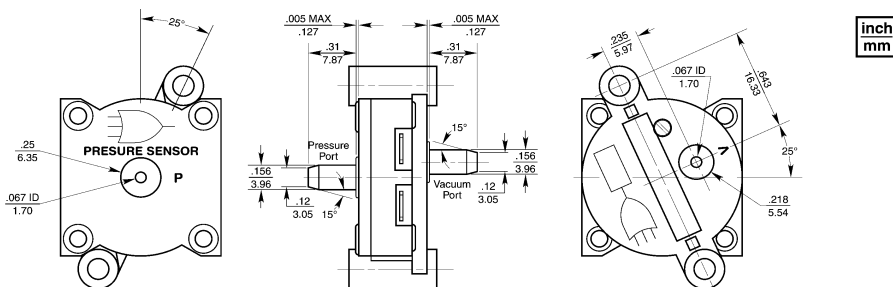
Applications include monitoring air pressure across filters to detect filter blocking, alarm control for positively pressurised areas or enclosures. The low swept volume of the switch and low inertia of the diaphragm makes it ideal for pulse counting applications.

The switches are designed for low current and logic applications, such as LED indicators and solid state relays. For inductive loads, a varistor or R-C snubber circuit is recommended. The switching of heavier loads requires an interface device, such as a solid state relay. (see Solid State Relay section)  
The switches may also be used with the RS range of air actuators and accessories (see Switch section).

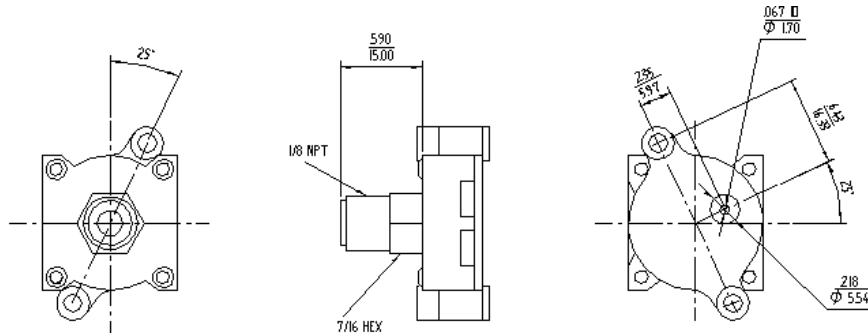
397-1107  
397-1113  
397-1129



397-1135  
397-2368  
397-1141



397-2302  
397-1157  
397-1163



## Technical specification

Pressure range:	_____	25.0 mbar to 1.35_bar (10.0ins H <sub>2</sub> O to 20 PSI)
Electrical:	_____	SPST N/O
Contact Rating	_____	10-20 mA 250Vac
Fluid Medium	_____	Wide range of media
Burst pressure	_____	1.7 bar (20 PSI)
Mechanical Life	_____	1.0x10 <sup>6</sup> cycles
Operating temp	_____	-40 to 85°C
Contacts	_____	Phosphor bronze with gold inlay.
Diaphragm	_____	Polyurethane
Case material	_____	Glass filled polyester
Weight	_____	10 grams