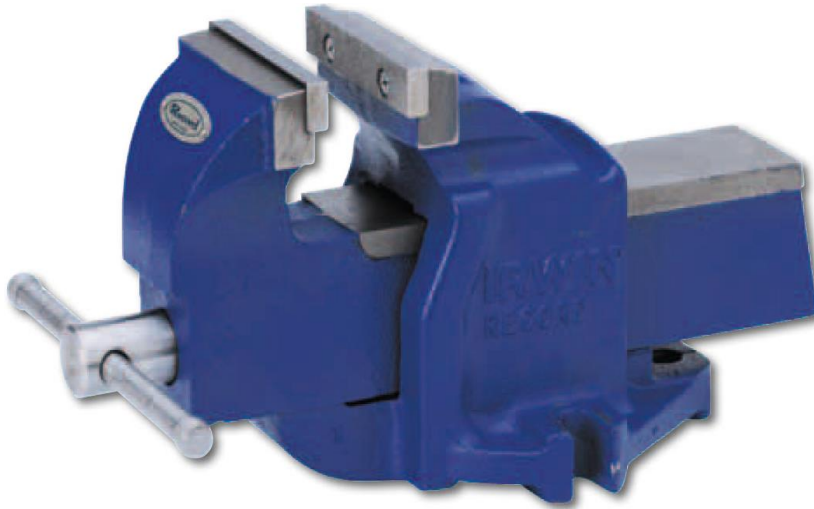


# **IRWIN TOOLS.**

## **1ZR, 3 & 6 Mechanics' vices.**



### **Mechanics' Vice - heavy duty range.**

Rigid and robust, the body and sliding jaw are cast from close grained grey iron which is machined on all friction surfaces for a smooth reliable action.

The jaws, handle and main screw are steel.

The main screw has a two-start rolled acme thread to speed the jaws from fully closed to fully open with a minimum of winding.

<b>Item No.</b>	<b>1ZR</b>	<b>3</b>	<b>6</b>
<b>Weight.</b>	5.4 kg.	15 kg.	32 kg.
<b>Jaw width.</b>	76mm.	102mm.	152mm.
<b>Throat depth (from top of jaw to top of slide).</b>	48mm.	70mm.	89mm.
<b>Max. jaw opening.</b>	95mm.	120mm.	205mm.
<b>Overall length of vice when closed.</b>	250mm	330mm	510mm
<b>Overall height of vice.</b>	120mm	170mm	192mm
<b>Distance between centres of front fixing slots.</b>	89mm	129mm	165mm
<b>Distance from mid-point between front fixing-slot centres to centre of rear fixing-hole.</b>	62mm	75mm	118mm
<b>Fixing-hole diameter.</b>	14.5mm	14.5mm	14.5mm
<b>Body/base casting thickness in fixing-hole area.</b>	21mm	28mm	33mm