

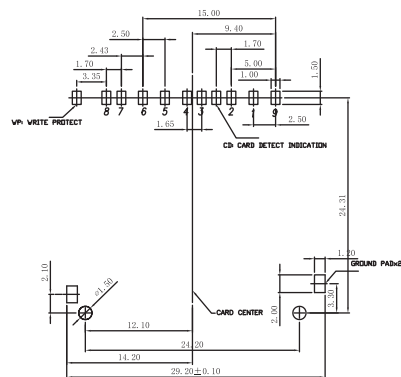
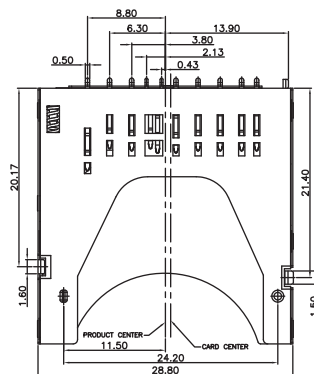
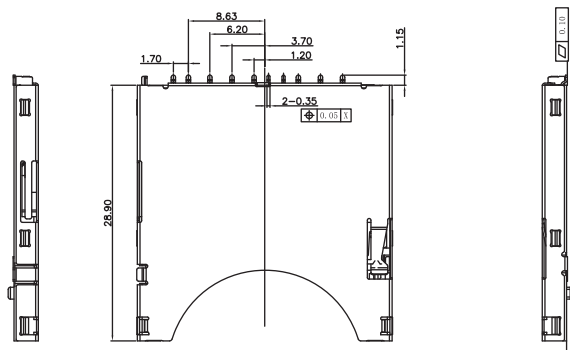
1

2

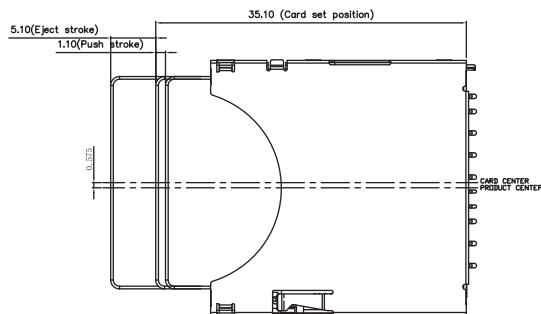
3

4

5



RECOMMENDED PCB LAYOUT
(ALL TOLERANCE ARE ±0.05)



TECHNICAL CHARACTERISTICS

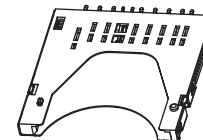
MATERIAL
 INSULATOR: LCP
 FLAMABILITY RATING: UL94-V0
 COLOR: BLACK
 CONTACT MATERIAL: COPPER ALLOY
 CONTACT TYPE: STAMPED
 CONTACT PLATING: SELECTIVE GOLD
 SHIELDING: STAINLESS STEEL
 QUALITY CLASS: 10000 MATING CYCLES

ENVIRONMENTAL
 OPERATING TEMPERATURE: -25 UP TO 85°C
 COMPLIANCE: LEAD FREE AND ROHS

ELECTRICAL
 CURRENT RATING: 0.5A
 WORKING VOLTAGE: 100VAC
 INSULATOR RESISTANCE: >1000 MOHM
 DIELECTRIC WITHSTANDING VOLTAGE: 500VAC/MN
 CONTACT RESISTANCE: 100 MOHM MAX

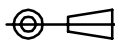
SOLDERING
 REFLOW PROCESS ONLY

PACKAGING
 TAPE & REEL



RoHS Compliant

PROJECTION:



GENERAL TOLERANCE

.X = ± 0.2

.XX = ± 0.15



APPROVAL: RJ

UNIT: MM

SCALE:

SHEET: 1/3

DRAW: VICKY

DESCRIPTION: SD Card Connector - Push & Push - With Card Detection
9 pins

WERI PART NO: 693 061 010 911

SIZE

A4

1

2

3

4

5

A

B

C

D

Contact OFF

Contact ON / Lock OFF

Contact ON / LOCK ON



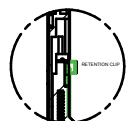
DETAIL U



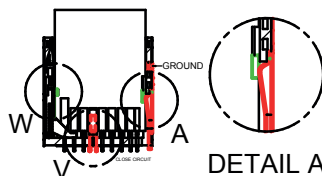
DETAIL S



DETAIL T



DETAIL W



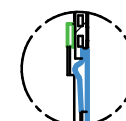
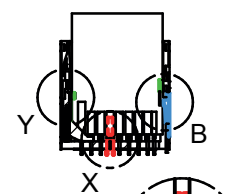
DETAIL A



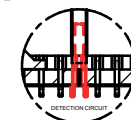
DETAIL V



DETAIL Y



DETAIL B

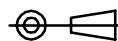


DETAIL X

Card detection switch		Write protection switch		
Card removed	Card inserted	Card removed	Card inserted	
			Write Protect	Write enable
OPEN	CLOSE	OPEN	OPEN	CLOSE

RoHS Compliant

PROJECTION:



GENERAL TOLERANCE

.X = +/- 0.2

.XX = +/- 0.15



APPROVAL: RJ

UNIT: MM

SCALE:

SHEET: 2/3

DRAW: VICKY

DESCRIPTION: SD Card Connector - Push & Push - With Card Detection
9 pins

WERI PART NO: 693 061 010 911

SIZE

A4

REV

DATE

FILE

BY

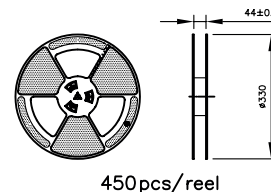
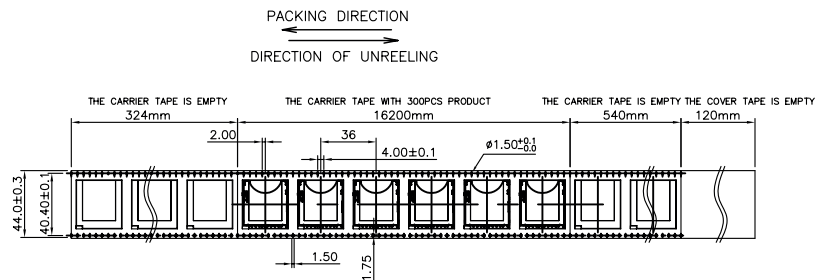
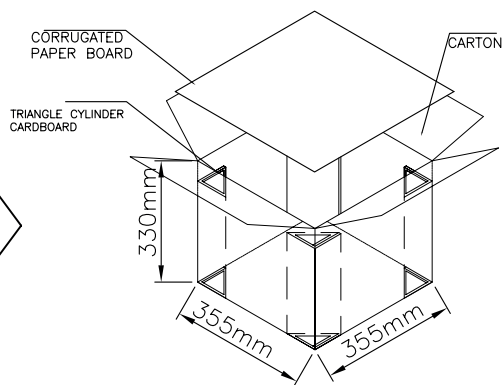
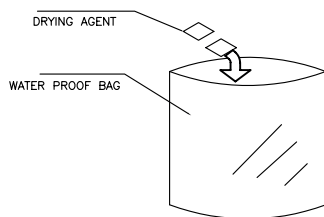
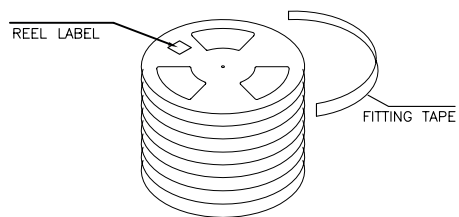
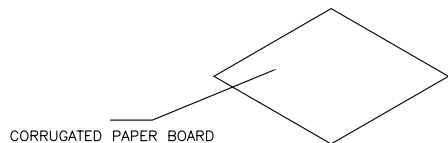
1

2

3

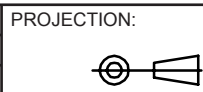
4

5



NOTES
1. MATERIALS: PS
2. PACKING: TAPE REEL(450PCS/REEL,3150PCS/CARTON)
3. SONY SS-00259 or RoHS
All Material in According With The RoHS Environment Related Substances List Controlled.

RoHS Compliant



GENERAL TOLERANCE
.X = ± 0.2
.XX = ± 0.15



APPROVAL: RJ

UNIT: MM
SCALE:
SHEET: 3/3
DRAW: VICKY

DESCRIPTION: SD Card Connector - Push & Push - With Card Detection
9 pins
WERI PART NO: 693 061 010 911

SIZE
A4

REV	DATE	FILE	BY
-----	------	------	----