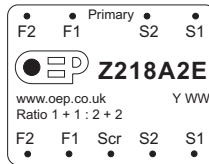
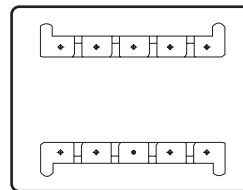
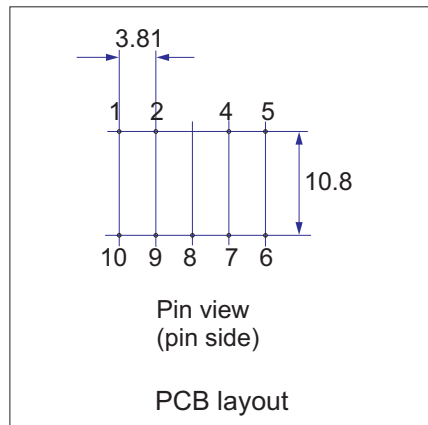
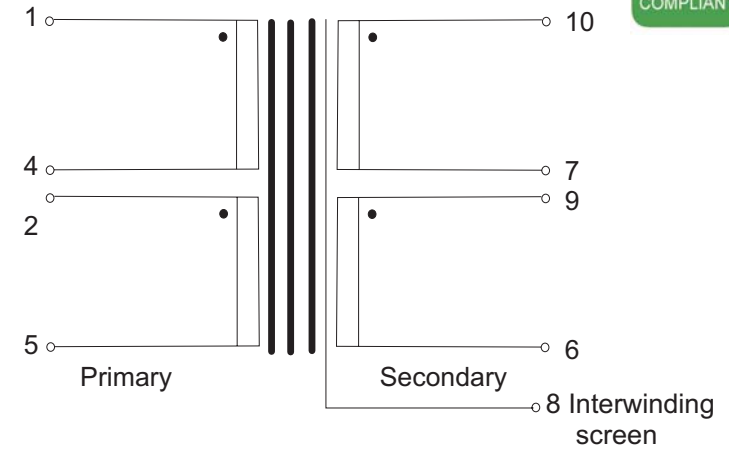
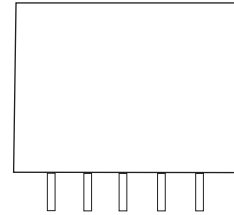
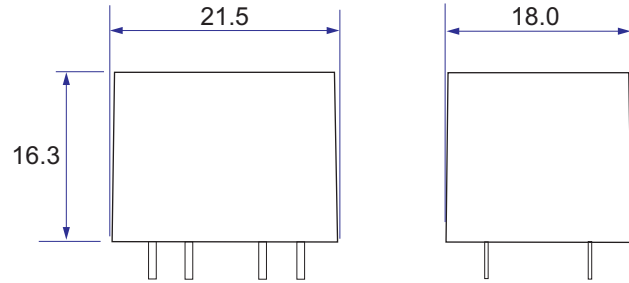


Application:

General purpose input transformer up to 0dBu



Label
Y WW = date code



Turns ratio	1+1 to 2+2		
Weight	20g		
	Min.	Typ.	Max.
Primary DC resistance (per winding)	-15%	60Ω	+15%
Secondary DC resistance (per winding)	-15%	165Ω	+15%
Optimal source impedance (series)		600Ω	
LF -3dB point			10Hz
HF -3dB point *	25kHz	30kHz	
30Hz max level (3% THD)		+0dBm	
THD (0dBm, 1kHz)		0.005%	0.01%
THD (0dBm, @ 20Hz)		1.9%	
Interwinding capacitance @ 10kHz		30pF	
Leakage inductance (1-5) @ 10kHz		6mH	
Operating / storage temperature range	-20°C		+85°C

Tolerance on all dimensions +/-0.2mm unless stated otherwise
Pin diameter = 0.71mm

* With 600Ω source resistance, screen (pin 8) grounded.
Unused pins should be left floating with minimal pad size for best performance.



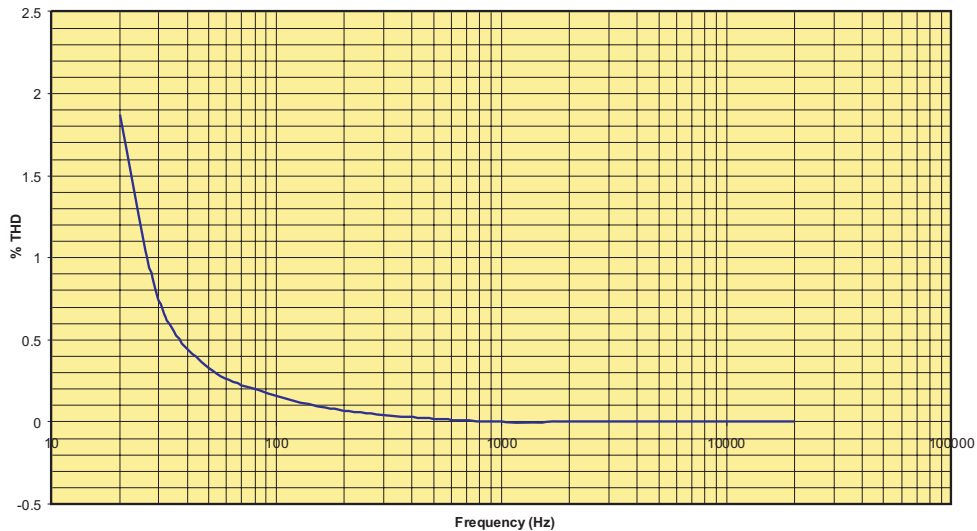
Walters Group Holdings Ltd.
Unit 5, Oxonian Park, Langford Locks,
Kidlington, Oxfordshire. OX5 1FP
Tel: (01865) 855085 Fax: (01865) 855075
Website: www.oep.co.uk

DESCRIPTION	ISSUE	DATE	DRAWN	CHECKED	DRAWING NUMBER
PCB mounting line input transformer Impedance: 150Ω/600Ω to 600Ω/2.4kΩ page 1 of 2	1	29/09/09	CS		Z218A2E
	2	13/05/10	CS		
	3	01/07/10	CS		
	4	01/11/10	CS		

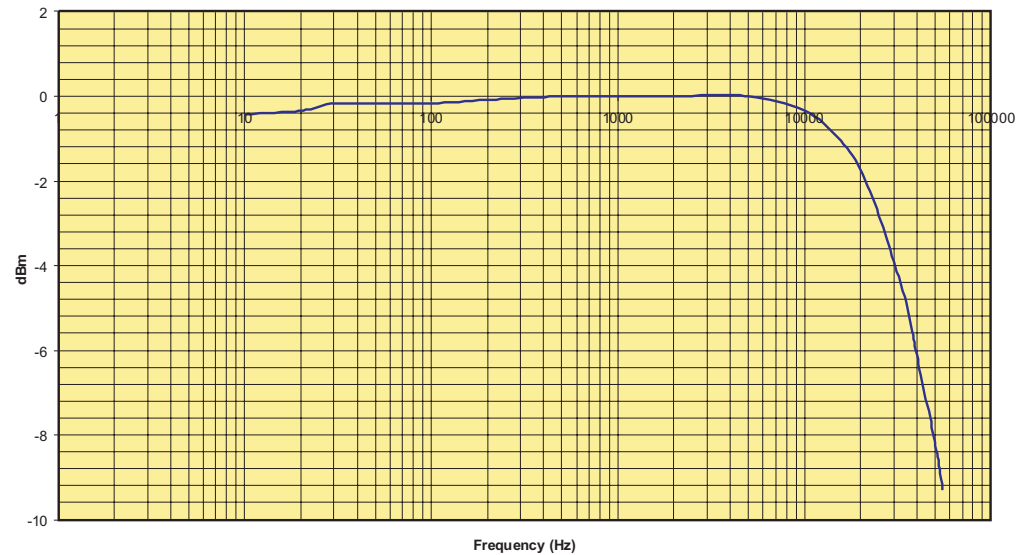
Scale: nts

All dimensions in mm unless stated otherwise

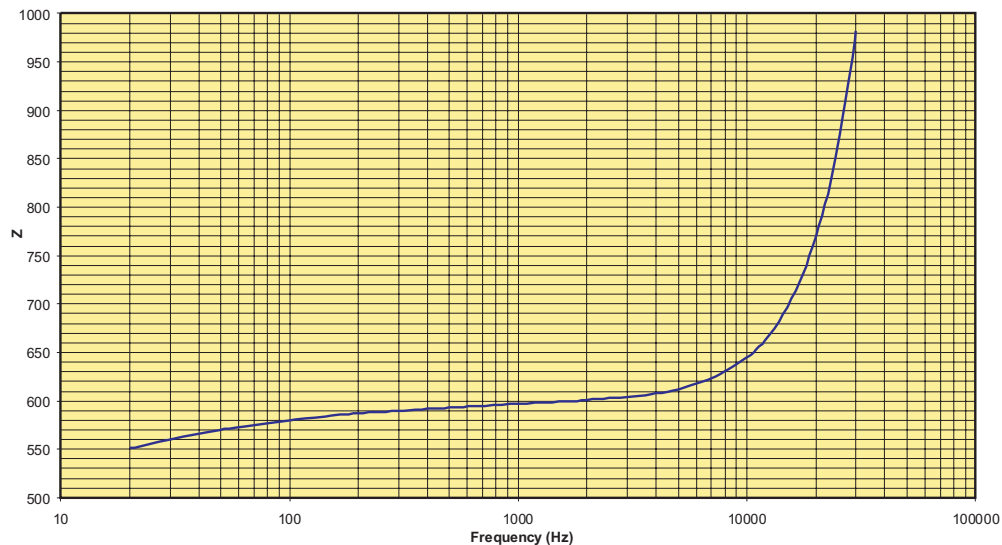
Distortion 20Hz - 20kHz, source: 0dBm, load: 1628 ohms, windings in series



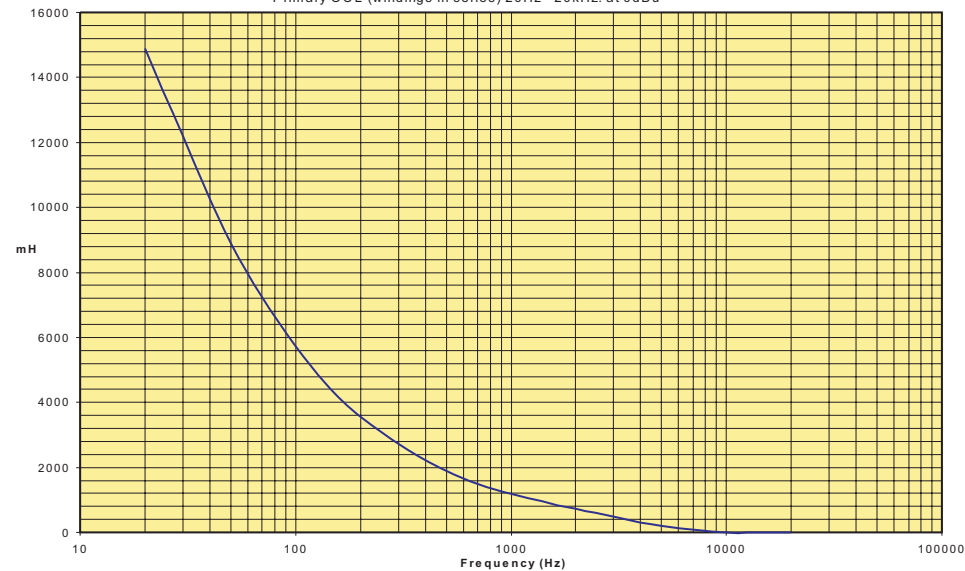
Frequency response: source: 0dBm, load: 1628 ohms, windings in series



Impedance 20Hz - 30kHz (1628 ohm load on secondary, windings in series)



Primary OCL (windings in series) 20Hz - 20kHz: at 0dBu



Walters Group Holdings Ltd.
 Unit 5, Oxonian Park, Langford Locks,
 Kidlington, Oxfordshire. OX5 1FP
 Tel: (01865) 855085 Fax: (01865) 855075
 Website: www.oep.co.uk

DESCRIPTION	ISSUE	DATE	DRAWN	CHECKED	DRAWING NUMBER
PCB mounting line input transformer Impedance: 150Ω/600Ω to 600Ω/2.4kΩ page 2 of 2	1	29/09/09	CS		Z218A2E
	2	13/05/10	CS		
	3	01/07/10	CS		
	4	01/11/10	CS		

Scale: nts

All dimensions in mm unless stated otherwise