

Power supply unit - EMG 75-NZG/G 5/2 - 2941060


Please be informed that the data shown in this PDF Document is generated from our Online Catalog. Please find the complete data in the user's documentation. Our General Terms of Use for Downloads are valid (<http://download.phoenixcontact.com>)



Voltage regulator module, secondary switched-mode, default, input 10 V-29 V AC/ 12 V-30 V DC, output 5,1 V DC/2 A



Key commercial data

Packing unit	1 pc
GTIN	 4 017918 104542
Weight per Piece (excluding packing)	276.5 g
Custom tariff number	85044082
Country of origin	Germany

Technical data

Dimensions

Width	75 mm
Height	70.5 mm
Depth	75 mm

Ambient conditions

Degree of protection	IP20
Ambient temperature (operation)	0 °C ... 55 °C

Input data

Input voltage range	12 V DC ... 30 V DC
AC frequency range	50 Hz ... 60 Hz
Nominal power consumption	approx. 60 VA
Input fuse	4 A (slow-blow TR 5, internal, solderable)

Output data

Nominal output voltage	5 V DC $\pm 2\%$ (settable from 5.1 V DC ... 24.5 V DC)
Output current	2 A

Power supply unit - EMG 75-NZG/G 5/2 - 2941060

Technical data

Output data

Residual ripple	≤ 400 mV _{PP}
Type of protection	Electronic current limitation at 2.8 A
Protective circuit/component	Varistor

General

Net weight	320 g
Operating voltage display	Green LED
Operating mode	100% operating factor
Mounting position	On horizontal DIN rail
Assembly instructions	Can be aligned with spacing = 5 mm

Connection data, input

Connection method	Screw connection
Conductor cross section solid min.	0.2 mm ²
Conductor cross section solid max.	4 mm ²
Conductor cross section stranded min.	0.2 mm ²
Conductor cross section stranded max.	2.5 mm ²
Conductor cross section AWG/kcmil min.	24
Conductor cross section AWG/kcmil max	14
Stripping length	8 mm
Screw thread	M3

Connection data, output

Connection method	Screw connection
Conductor cross section solid min.	0.2 mm ²
Conductor cross section solid max.	4 mm ²
Conductor cross section stranded min.	0.2 mm ²
Conductor cross section stranded max.	2.5 mm ²
Conductor cross section AWG/kcmil min.	24
Conductor cross section AWG/kcmil max	14
Stripping length	8 mm

Classifications

eCl@ss

eCl@ss 4.0	27040702
eCl@ss 4.1	27040702
eCl@ss 5.0	27242213
eCl@ss 5.1	27242213
eCl@ss 6.0	27049003
eCl@ss 7.0	27049003
eCl@ss 8.0	27049003

Power supply unit - EMG 75-NZG/G 5/2 - 2941060

Classifications

ETIM

ETIM 2.0	EC001039
ETIM 3.0	EC001039
ETIM 4.0	EC002045
ETIM 5.0	EC002045

UNSPSC

UNSPSC 6.01	30211502
UNSPSC 7.0901	39121004
UNSPSC 11	39121004
UNSPSC 12.01	39121004
UNSPSC 13.2	39121004

Approvals

Approvals

Approvals

GOST

Ex Approvals

Approvals submitted

Approval details

GOST

Accessories

Accessories

Marking material - EMG-GKS 12 - 2947035

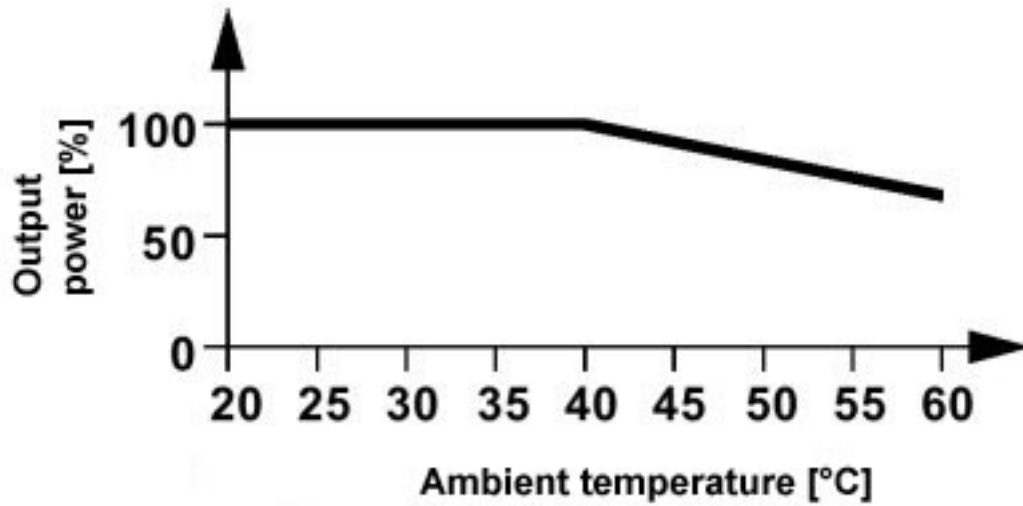


Equipment marker, width 12 mm

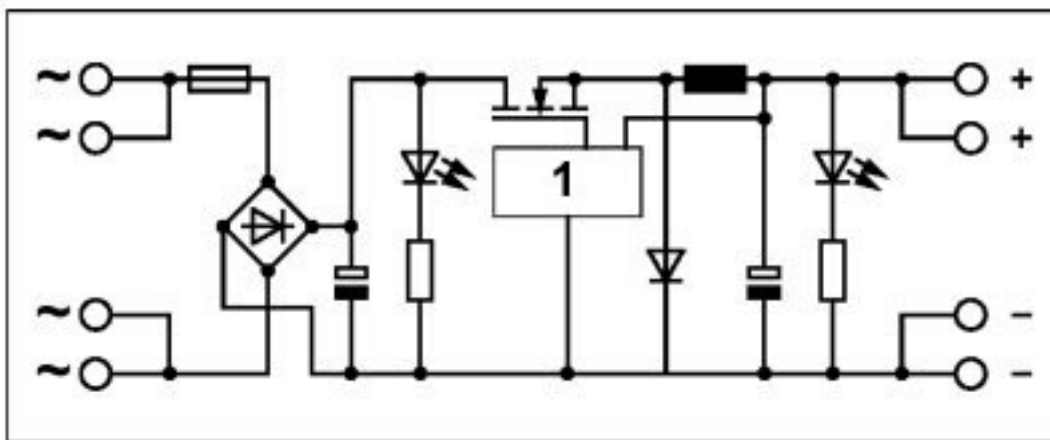
Power supply unit - EMG 75-NZG/G 5/2 - 2941060

Drawings

Diagram



Circuit diagram



1 = switched-mode regulator