

Datasheet

RS Pro Black Brass, Fibreglass Reinforced Nylon Matte Handle, 180mm x 45mm x 27mm 160mm

RS Stock No: **456-579**



Product Details

RS Pro drawer handle measures 180 x 45 x 27 mm. This handle in black colour, is made of brass and fibreglass reinforced nylon with matte finishing for added durability. The fixing centres are 160 mm apart.

Features and Benefits

- Black polyamide
- Female M6 inserts, 160 mm centres
- Durable construction

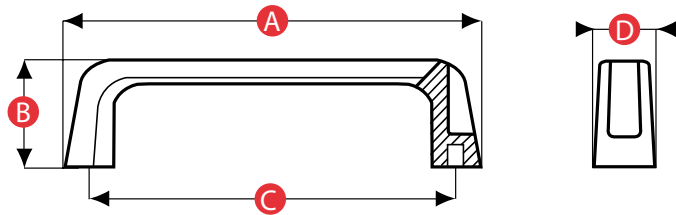
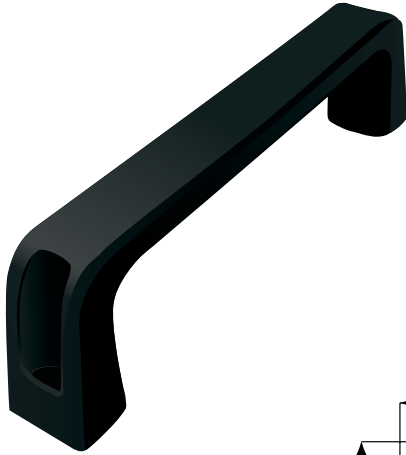


ENGLISH

Specifications:

Colour	Black
Finish	Matte
Insert Material	Brass
Material	Brass, Fibreglass Reinforced Nylon
Fixing Centres	160 mm
Height	45 mm
Length	180 mm
Width	27 mm

Bridge Handle Model 04 - Nylon - Concealed



PATTERN	PART NO.	A	B	C	D	THREAD SIZE	WEIGHT (g)
61160	456579	180	45	160	27	M6	77.2

Material: 15% glass filled nylon (PA6)
 Insert Material: Brass
 Standard Colour: Black
 Available colours: A wide range of RAL colours can be produced
 - MOQs apply

All dimensions are in mm (unless otherwise stated) and are approximate. All weights are in grams and are approximate.