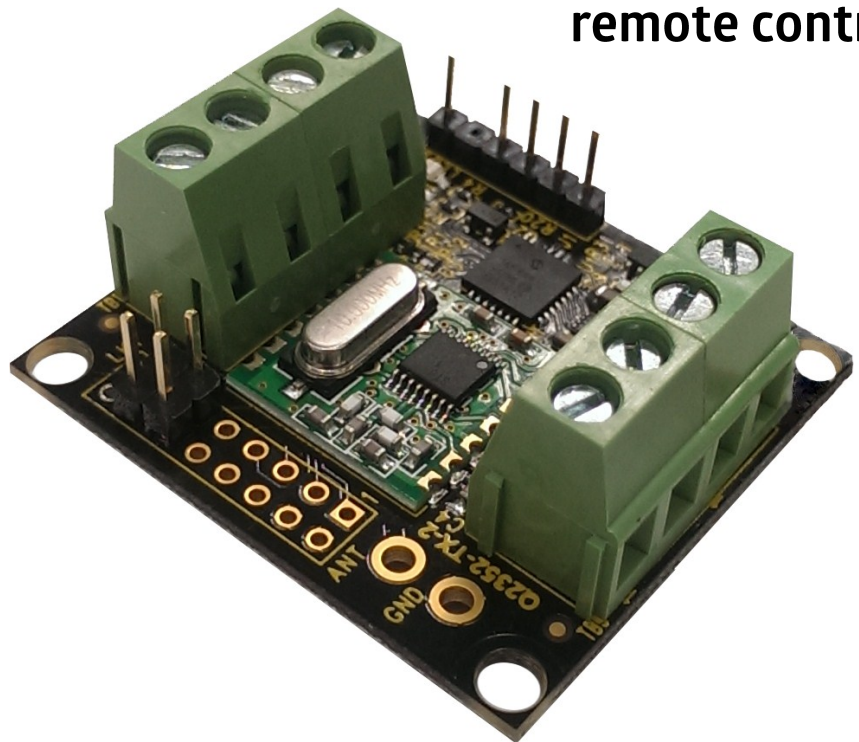


## Turns any switch into a remote control!

### Features

- Simple to use
- Range up to 100m
- 4 digital inputs
- Ultra low power
- Versatile
- Auto-transmit fail safe option
- Compact - 38mm x 42mm



### Applications

- Remote Control
- Remote Networking
- Remote Switching
- Remote Traffic Lights
- Door bells / Buzzers
- Push buttons

### Operates with:

- BRAVO-T868
- ELITE Series

### Description

The BOGEYBOARD is an innovative product which allows anybody to make their own remote transmitter and wireless enable an existing switch.

With 4 close contact inputs to use and being only 38mm x 42mm the BOGEYBOARD is small and powerful. The tiny board is easily capable of achieving 100m range in open line-of-sight conditions.

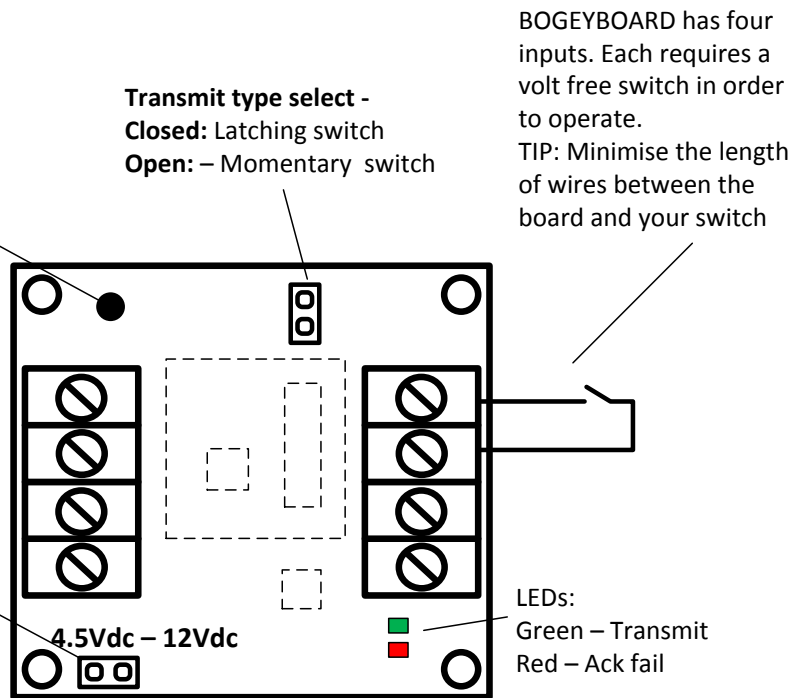
### Ordering Information

Part Number	Description
BOGEYBOARD-868	Turns any 868MHz switch into a remote control

## Functional overview

BOGEYBOARD is supplied with a small wire antenna using this it is possible to achieve up to 150m range.  
NOTE: An antenna ground point is also provided for those wishing to change the antenna\*

\*Whilst BOGEYBOARD is supplied with a battery connector for use with a 9V PP3 battery, it is designed to operate using any voltage may be applied between 4.5Vdc and 12Vdc



## Operational Characteristics

The BOGEYBOARD is very simple to connect and use. Wire a switch to any one or many of the inputs and close the contact send a signal. As default the BOGEY-BOARD is designed for use with momentary buttons - to send a signal continuously while a button is pressed. As such it will replicate a handheld transmitter.

### Transmit type select:

#### Latching button operation:

The BOGEYBOARD can be configured to work with a latching push button, where by it will send a signal only each time the input changes its status - it sends three packets when a switch is closed and three more when it is opened. Latching button is enabled the BOGEYBOARD will request an acknowledgement from any receiver it is paired to after a transmission. If no ack is received then the BOGEYBOARD will re-try. After 3 failed attempts it will flash its red LED 10 times.

#### Momentary button operation:

The BOGEYBOARD can operate with momentary push switches. In this mode it will send data continuously while an button is closed over its input.

### LEDs

Green LED: Flashes as each transmission is sent

RED LED: Shows a failed transmission in request acknowledge mode.  
Indicates LOW BATTERY - flashes slowly.

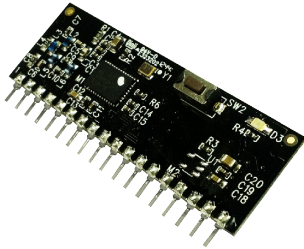
\*Soldering to or otherwise modifying the BOGEYBOARD will invalidate the warranty.

# BOGEYBOARD-868



## Compatible receivers

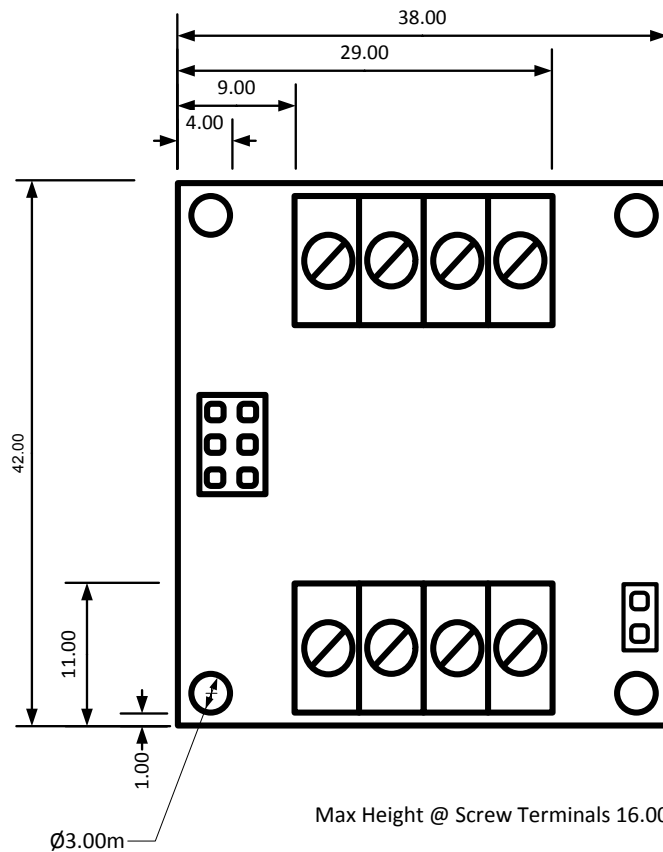
The BOGEYBOARD is a versatile remote control and as such is compatible with nearly all RF Solutions 868MHz receivers.



Receiver Part Number	Form Factor	Expected Range	Outputs
ELITE-RX*	Boxed IP rated	100m	4 230Vac outputs
ELITE-RXL*	Boxed IP rated	100m	4 changeover relays
BRAVO-T868	Intelligent radio module	100m	8 TTL level

**\* PLEASE NOTE: Auto-pairing feature on the ELITE receivers is not compatible with the BOGEYBOARD-868**

## Mechanical Drawing:



## Technical Specifications:

Operating temperature: 0 - 55°C

Storage Temperature: -10 - 70°C

Electrical Characteristics	Min	Typical	Max	Units
Supply Voltage: 4.5V-12V Supply	4.5	9	12	Vdc
Antenna Output Lead Impedance		50		Ohms
Minimum input activation time to trigger transmission		50		ms
<b>868MHz Version</b>				
Supply Current: Quiescent	4	6	8	uA
Supply Current: Transmitting Data	18	22	26	mA

Information contained in this document is believed to be accurate, however no representation or warranty is given and R.F. Solutions Ltd. assumes no liability with respect to the accuracy of such information. Use of R.F.Solutions' products as critical components and/or in life support systems is not authorised except with express written approval from R.F.Solutions Ltd.

## RF Solutions Ltd. Recycling Notice

Meets the following EC Directives:

### DO NOT

Discard with normal waste, please recycle.



### ROHS Directive 2002/95/EC

Specifies certain limits for hazardous substances.



### WEEE Directive 2002/96/EC

Waste electrical & electronic equipment. This product must be disposed of through a licensed WEEE collection point.

RF Solutions Ltd., fulfils its WEEE obligations by membership of an approved compliance scheme.

### Waste Batteries and Accumulators Directive 2006/66/EC

Where batteries are fitted, before recycling the product, the batteries must be removed and disposed of at a licensed collection point.

### Environment Agency producer registration number: WEE/JB0104WV.

#### Disclaimer:

Whilst the information in this document is believed to be correct at the time of issue, RF Solutions Ltd does not accept any liability whatsoever for its accuracy, adequacy or completeness. No express or implied warranty or representation is given relating to the information contained in this document. RF Solutions Ltd reserves the right to make changes and improvements to the product(s) described herein without notice. Buyers and other users should determine for themselves the suitability of any such information or products for their own particular requirements or specification(s). RF Solutions Ltd shall not be liable for any loss or damage caused as a result of user's own determination of how to deploy or use R F Solutions Ltd's products. Use of RF Solutions Ltd products or components in life support and/or safety applications is not authorised except with express written approval. No licences are created, implicitly or otherwise, under any of RF Solutions Ltd's intellectual property rights. Liability for loss or damage resulting or caused by reliance on the information contained herein or from the use of the product (including liability resulting from negligence or where RF Solutions Ltd was aware of the possibility of such loss or damage arising) is excluded. This will not operate to limit or restrict QuasarUK Ltd's liability for death or personal injury resulting from its negligence.