



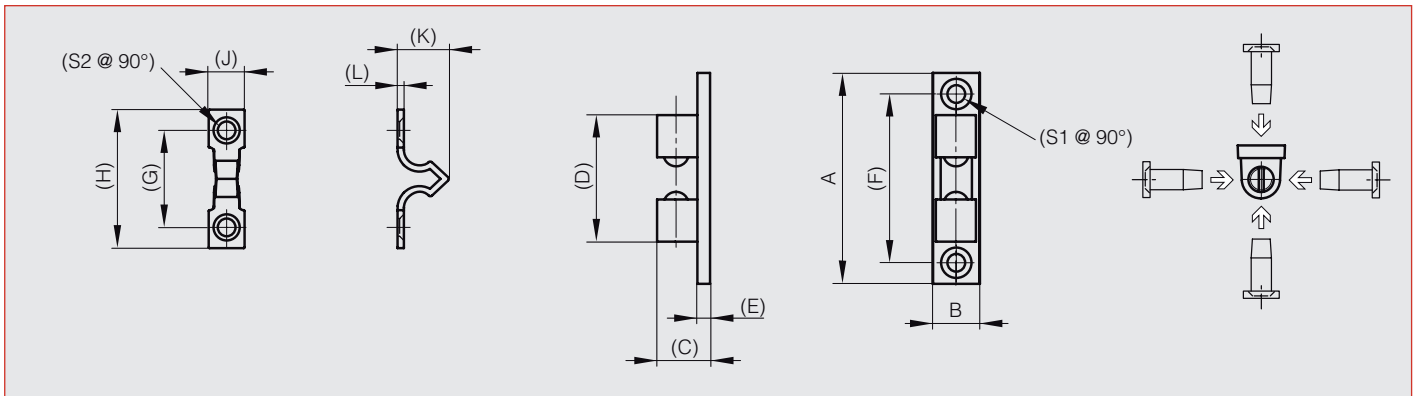
Mechanical catches

Dual ball catches α

Coutersunk on both sides of the catch.
Strike can be secured on 4 sides of the catch.



Part number	Material	Finish	A	B	C	D	E	F	G	H	J	K	L	S1	S2	Weight (g)
16-7-3469	zinc die-cast	brass	50	11	12.5	30	3	40	21	30.5	8.1	18	1.4	4.2	3.5	21.5
16-7-3470	zinc die-cast	brass	60	14.5	14.5	38	3	48	27	42	10	20.1	2.0	4.2	4.2	37.5
16-7-3471	zinc die-cast	brass	70	17.5	16.5	44	3.5	57	34.5	50.5	12	22.3	2.0	4.2	3.2	58.8

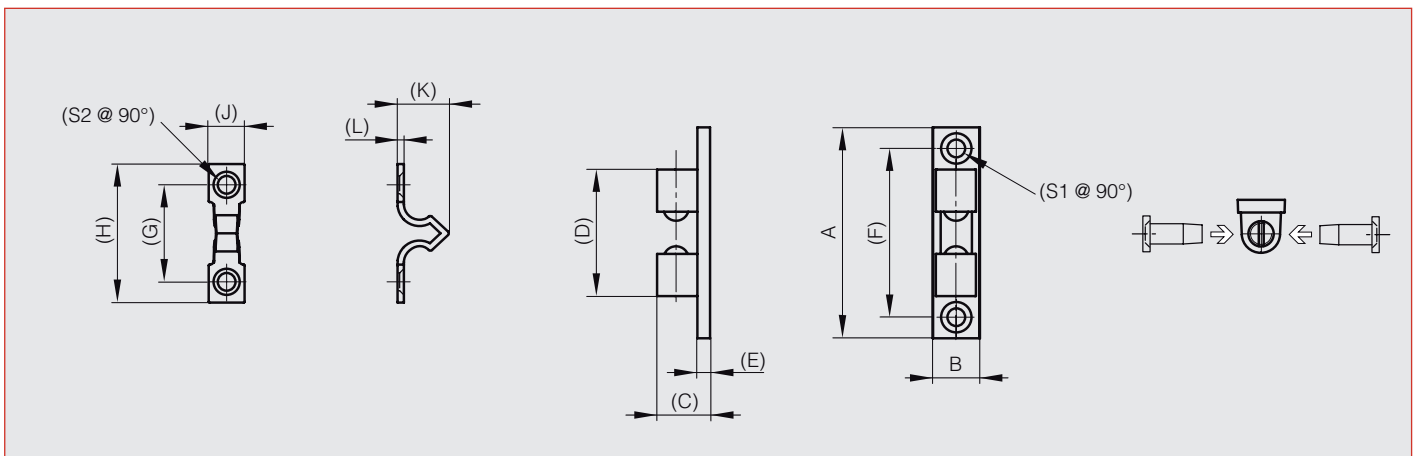


Dual ball catches β

Strike can be secured on 2 sides of the catch.



Part number	Material	Finish	A	B	C	D	E	F	G	H	J	K	L	S1	S2	Weight (g)
16-7-3423	zinc die-cast	brass	42	8.2	10.6	26	2.9	34	16.9	25	8	14	1.2	3.5	3.0	13.7



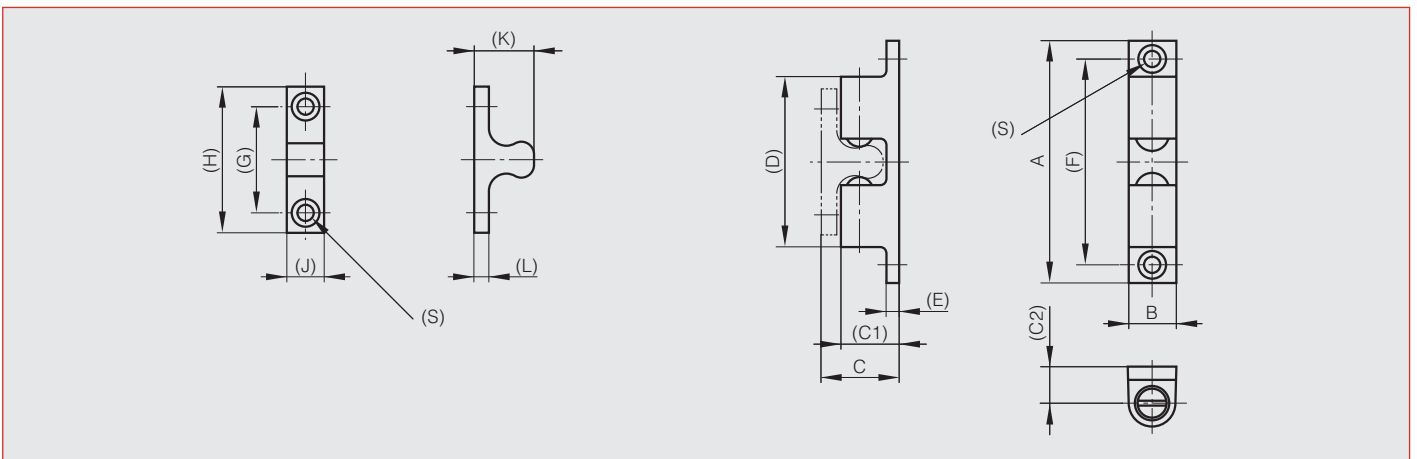


Mechanical catches

Zinc die-cast dual ball catches

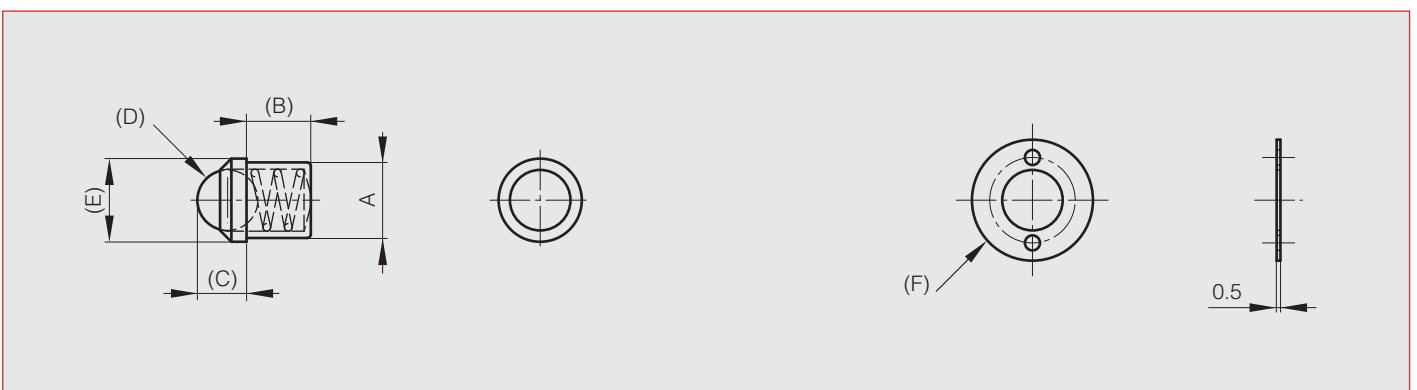


Part number	Material	Finish	A	B	C	C1	C2	D	E	F	G	H	J	K	L	S	Force	Weight (g)
16-7-4211	zinc die-cast	chrome plated	42.5	8	14	10	6.5	26.7	2.5	35	16	25	7.5	11.3	2.5	3.2	3kg	16
16-7-4212	zinc die-cast	chrome plated	50	10	16	12.5	7.4	29.8	3	40	20	30	9	12.3	2.5	4.2	3.3kg	26
16-7-4213	zinc die-cast	chrome plated	70	13.5	21.2	17	11	49	4	60	30	42	10.5	17.2	3	4.2	3.5kg	70



Ball catches

Part number	Material	Finish	A	B	C	D	E	F	Weight (g)
16-7-3330	brass	raw	8	7.4	4.5	6.5	9	16	3.7
16-7-3331	brass	raw	10	8.5	6.5	8	11	16	6.5
16-7-3332	brass	raw	12	9	7	10	13	19.5	9.9
16-7-3333	brass	raw	13	10.5	7.2	10	14	19.5	13.5





Latching systems

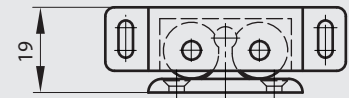
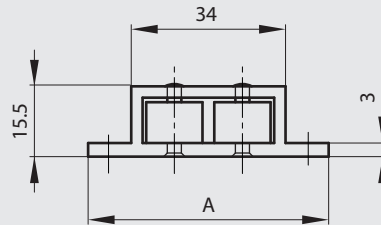
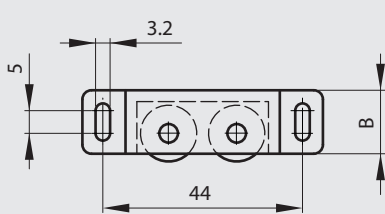
Mechanical catches

Roller catch without counterplate

Rubber rollers. Housing in ABS. Shaft in brass.



Part number	Material	Finish	A	B	Force	Weight (g)
16-1-3594	plastic	white	53	14	up to 1.5kg	9



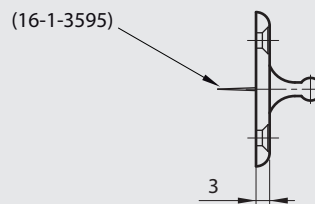
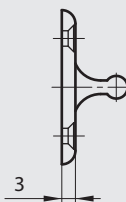
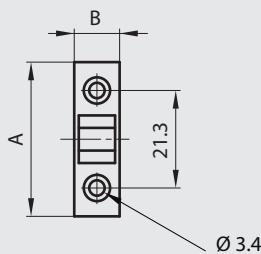
16-1-3594 + 16-1-3595 & 3596

Counterplates for part number 16-1-3594

Strike in ABS.



Part number	Material	Finish	A	B	Note	Weight (g)
16-1-3596	plastic	white	34	10	without pin	1.5
16-1-3595	plastic	white	34	10	with pin	1.5





Latching systems

Mechanical catches

Snap-in knuckle catch in plastic

Snap-in type body for easy installation on sheet metal applications.

3 panel thicknesses (E) : 0.8 mm, 1.0 mm and 1.2 mm

Cut-out dimensions vary depending on panel thickness.

Internal catch body tolerance of 1.5 mm for ease of alignment.

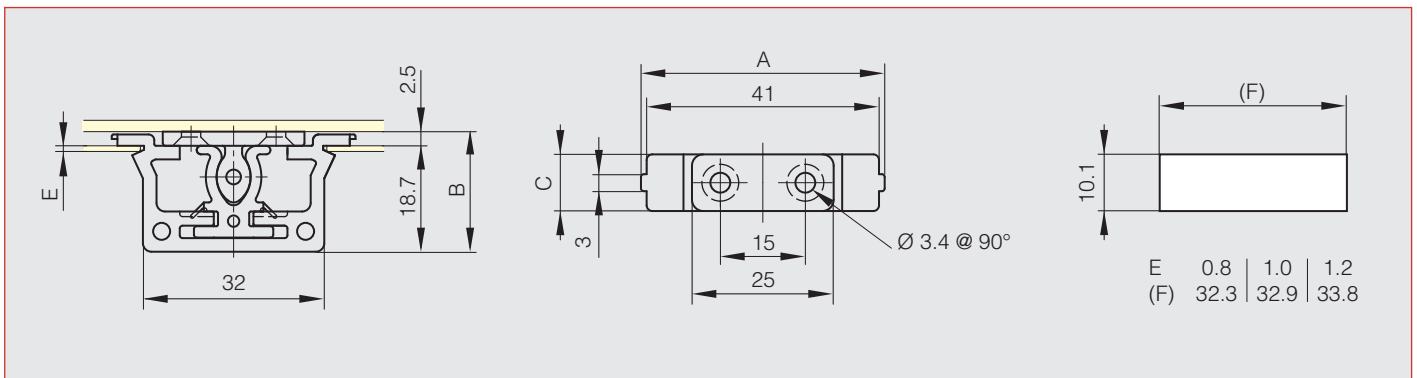
Push-in force : 2.0 kg.

Pulling force : 2.0 kg.

Body in polyacetal (POM) and strike in polyamide (PA).



Part number	Material	Finish	A	B	C	Force	Weight (g)
16-7-4214	plastic	white	43	21.2	10	2kg	5.2



Plastic catch

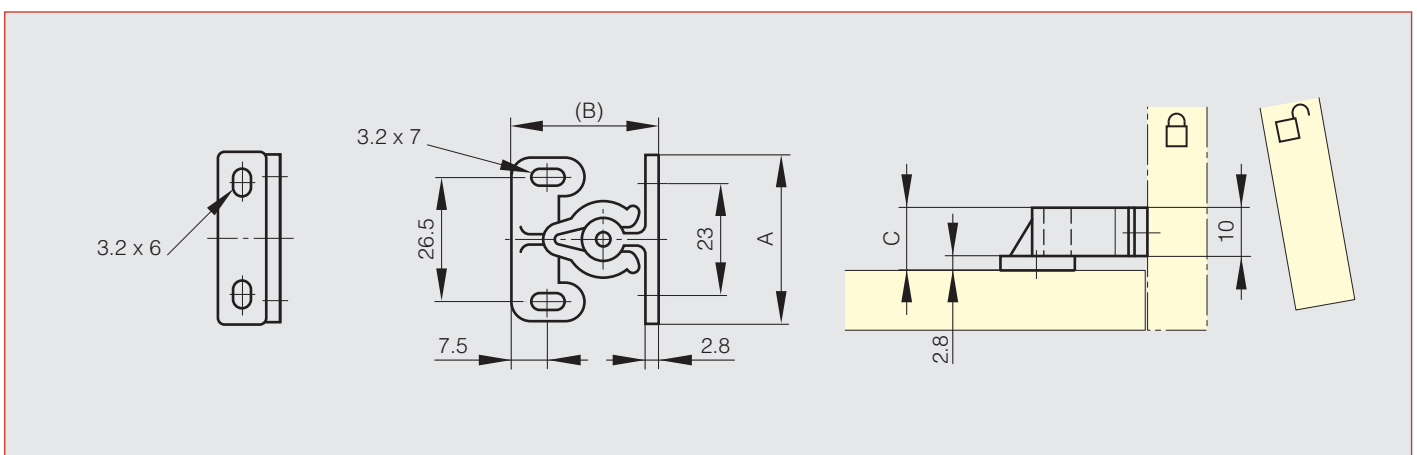
Push in force : 5.7 kg

Pulling force : 7.1 kg

Body in polyamide (PA) and strike in polyacetal (POM).



Part number	Material	Finish	A	B	C	Force	Weight (g)
16-7-3860	plastic	white	35.4	30.5	13	7.1kg	4.5

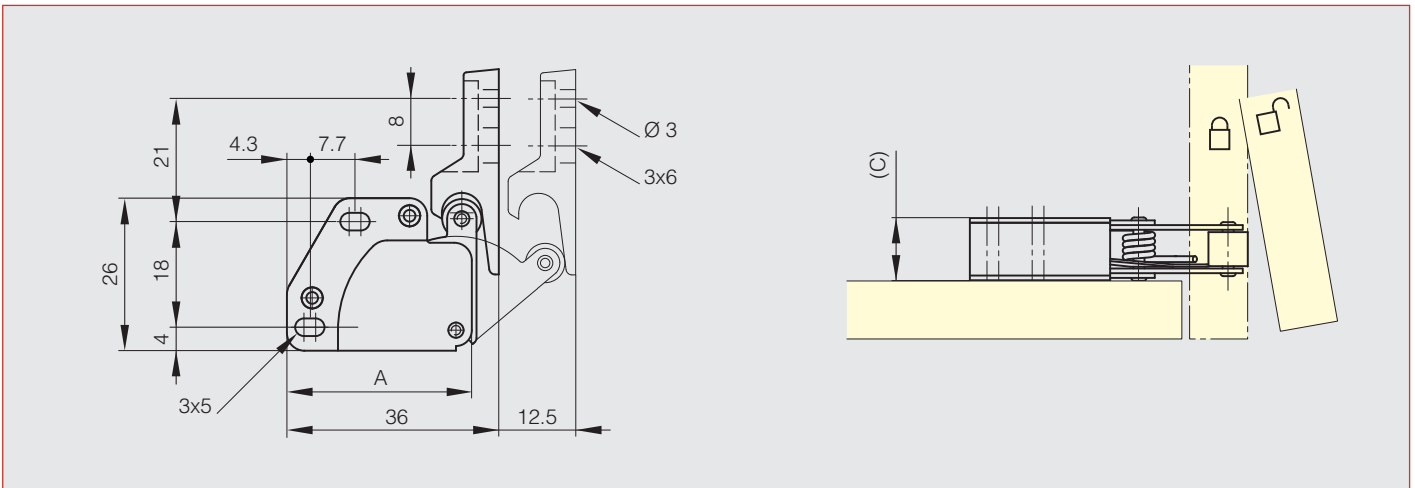




Touch latch A



Part number	Material	Finish	A	C	Weight (g)
16-7-3838	steel	nickel plated and white plastic	33	11	20

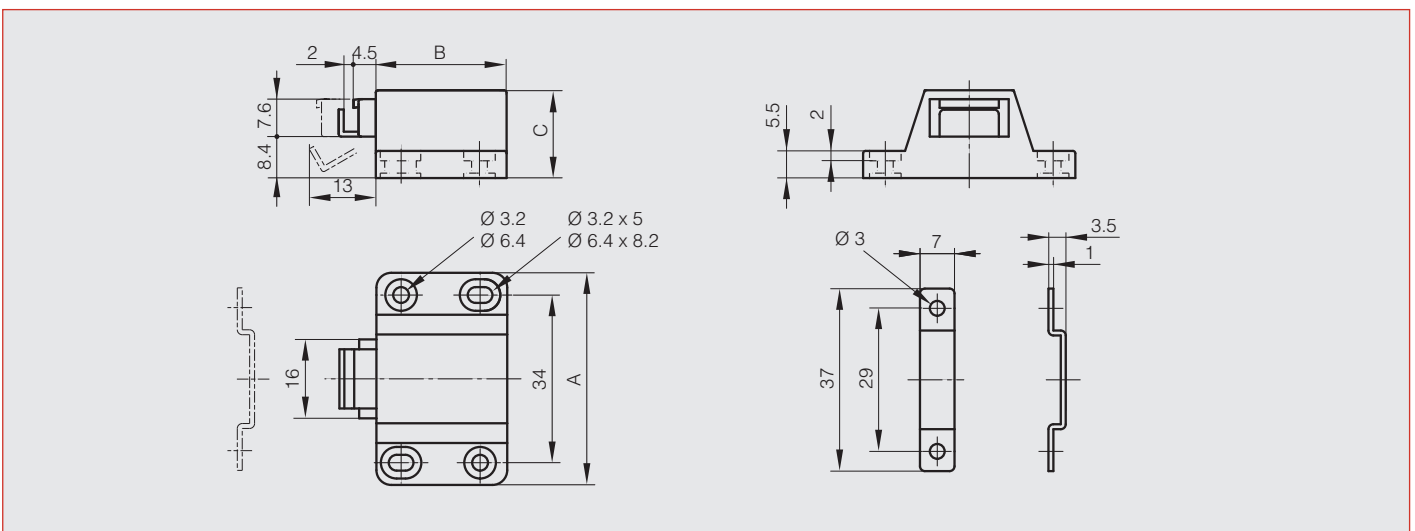


Touch latch B

Chrome plated strike.



Part number	Material	Finish	A	B	C	Force	Weight (g)
16-7-4210	plastic	black	43	26.5	17.8	10kg	16.3





Latching systems

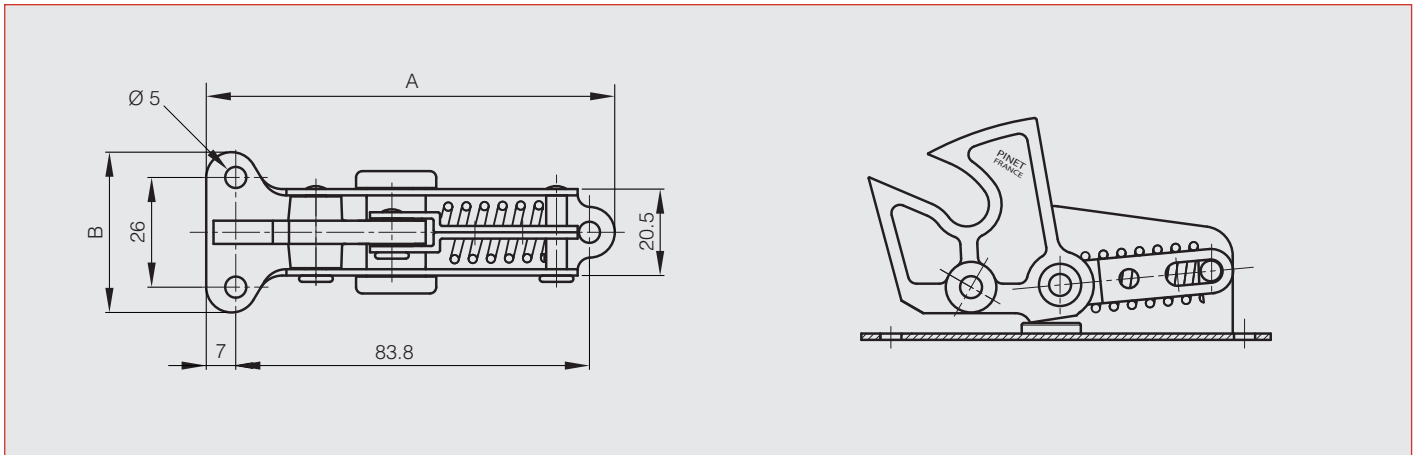
Mechanical catches

Catch

Nylon hook, rubber damper.



Part number	Material	Finish	A	B	Force	Weight (g)
16-1-3271	steel	zinc plated	97	39	8kg	100



Counterplate for part number 16-1-3271

Nylon roller.



Part number	Material	Finish	A	B	Weight (g)
16-1-3272	steel	chrome plated	62	22	41

