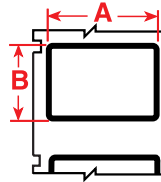


I.D. PRO™ Plus LABELS

CONTINUED

▶ CONTROL PANEL IDENTIFICATION LABELS



Labels designed for use in control panels to identify motors, starters, relays, contractors, etc.

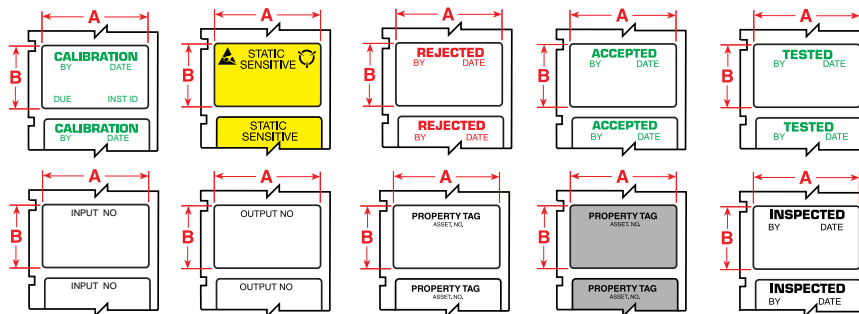


1/16" Black-Bordered Identification CL – BK Series

Part Number	Marker Size Code	Labels Per Roll	Label Material	Label Width Inch (mm) A	Label Height Inch (mm) B	Maximum Lines of Print Print ▲	Maximum Characters Across Large	Maximum Characters Across Small
CL-111-619-BK	111	500	Polyester	1.13 (28.702)	0.50 (12.70)	1	7	10
CL-111-621-BK	111	500	Translucent Polyester	1.13 (28.702)	0.50 (12.70)	1	7	10
CL-111-969-BK	111	500	Metallized Polyester	1.13 (28.702)	0.50 (12.70)	1	7	10
CL-317-619-BK	317	250	Polyester	1.63 (41.402)	0.75 (19.05)	3	10	15
CL-317-621-BK	317	250	Translucent Polyester	1.63 (41.402)	0.75 (19.05)	3	10	15
CL-317-969-BK	317	250	Metallized Polyester	1.63 (41.402)	0.75 (19.05)	3	10	15

▲ I.D. PRO Plus will print up to 8 different lines of text. In wire and strip modes, I.D. PRO Plus will repeat the full legend for the entire length of the label.

▶ PRE-PRINTED LABELS



Vinyl Cloth (B-502), Tamper-Evident Vinyl (B-607), Metallized Polyester (B-969)

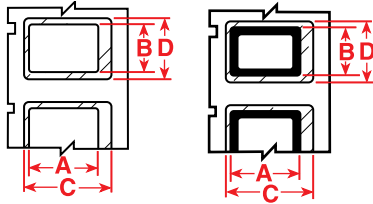
Part Number	Marker Size Code	Labels Per Roll	Label Material	Label Width Inch (mm) A	Label Height Inch (mm) B	Maximum Lines of Print Print ▲	Maximum Characters Across Large	Maximum Characters Across Small	Pre-Printed Legends	Print Color
CLWO-317-1	317	500	Vinyl Cloth	1.50 (38.10)	0.75 (19.05)	3	10	15	REJECTED	Red
CLWO-317-2	317	500	Vinyl Cloth	1.50 (38.10)	0.75 (19.05)	3	10	15	ACCEPTED	Green
CLWO-217-3	217	500	Vinyl Cloth	1.50 (38.10)	0.75 (19.05)	2	10	15	CALIBRATION	Green
CLWO-317-4	317	500	Vinyl Cloth	1.50 (38.10)	0.75 (19.05)	3	10	15	TESTED	Green
CLWO-317-5	317	500	Vinyl Cloth	1.50 (38.10)	0.75 (19.05)	3	10	15	INSPECTED	Black
CLWO-217-6	217	500	Vinyl Cloth	1.50 (38.10)	0.50 (12.70)	2	10	15	INPUT NO.	Black
CLWO-217-7	217	500	Vinyl Cloth	1.50 (38.10)	0.50 (12.70)	2	10	15	OUTPUT NO.	Black
CLSL-111-502	111	500	Vinyl Cloth	1.00 (25.40)	0.50 (12.70)	1	7	10	STATIC SENSITIVE	Black
CLWO-217-607	217	250	Tamper-Evident Vinyl	1.63 (41.40)	0.75 (19.05)	2	10	15	PROPERTY TAG	Black
CLWO-217-969	217	250	Metallized Polyester	1.63 (41.40)	0.75 (19.05)	2	10	15	PROPERTY TAG	Black

▲ I.D. PRO Plus will print up to 8 different lines of text. In wire and strip modes, I.D. PRO Plus will repeat the full legend for the entire length of the label.

I.D. PRO™ Plus LABELS

CONTINUED

▶ PERMASHIELD™ LABELS

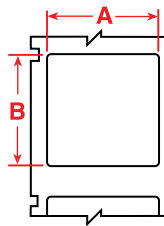


White Paper (B-122), White Polyester (B-619), Metallized Polyester (B-969)

Part Number	Marker Size Code	Labels Per Roll	Marker Label Material	Label Width	Label Height	Overlamine Dimensions		Maximum Lines of Print ▲	Maximum Characters Across	
				Inch (mm)	Inch (mm)	Inch (mm)	D		Large	Small
PSL-311-122	311	250	Paper	1.00 (25.40)	0.50 (12.70)	1.06 (26.92)	0.75 (19.05)	3	7	10
PSL-311-619	311	250	Polyester	1.00 (25.40)	0.50 (12.70)	1.06 (26.92)	0.75 (19.05)	3	7	10
PSL-311-969	311	250	Metallized Polyester	1.00 (25.40)	0.50 (12.70)	1.06 (26.92)	0.75 (19.05)	3	7	10

▲ I.D. PRO Plus will print up to 8 different lines of text. In wire and strip modes, I.D. PRO Plus will repeat the full legend for the entire length of the label.

▶ COMPONENT AND GENERAL IDENTIFICATION LABELS



For use on components in control panels, electronic components and circuit boards, faceplates and electronic receptacles.



Part Number	Marker Size Code	Labels Per Roll	Label Material	Label Width	Label Height	Maximum Lines of Print ▲	Maximum Characters Across	
				Inch (mm)	Inch (mm)		Large	Small
CL-105-499	105	500	Nylon Cloth	0.50 (12.70)	.275 (7.0)	1	3	4
CL-105-502	105	500	Vinyl Cloth	0.50 (12.70)	.275 (7.0)	1	3	4
CL-105-607	105	500	Tamper-Proof Vinyl	0.50 (12.70)	.275 (7.0)	1	3	4
CL-105-619	105	500	Polyester	0.50 (12.70)	.275 (7.0)	1	3	4
CL-105-621	105	500	Translucent Polyester	0.50 (12.70)	.275 (7.0)	1	3	4
CL-105-652	105	500	Polyimide	0.50 (12.70)	.275 (7.0)	1	3	4
CL-105-969	105	500	Metallized Polyester	0.50 (12.70)	.275 (7.0)	1	3	4
CL-111-122	111	500	Paper	1.00 (25.40)	.275 (7.0)	1	7	10
CL-111-499	111	500	Nylon Cloth	1.00 (25.40)	.275 (7.0)	1	7	10
CL-111-502	111	500	Vinyl Cloth	1.00 (25.40)	.275 (7.0)	1	7	10
CL-111-607	111	500	Tamper-Proof Vinyl	1.00 (25.40)	.275 (7.0)	1	7	10
CL-111-619	111	500	Polyester	1.00 (25.40)	.275 (7.0)	1	7	10
CL-111-621	111	500	Translucent Polyester	1.00 (25.40)	.275 (7.0)	1	7	10

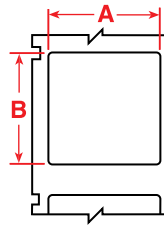
▲ I.D. PRO Plus will print up to 8 different lines of text. In wire and strip modes, I.D. PRO Plus will repeat the full legend for the entire length of the label.

portable printer labels

I.D. PRO™ Plus LABELS

CONTINUED

▶ COMPONENT AND GENERAL IDENTIFICATION LABELS CONTINUED



For use on components in control panels, electronic components and circuit boards, faceplates and electronic receptacles.

Part Number	Marker Size Code	Labels Per Roll	Label Material	Label Width Inch (mm) A	Label Height Inch (mm) B	Maximum Lines of Print ▲	Maximum Characters Across Large	Maximum Characters Across Small
CL-111-637	111	500	Tedlar®	1.00 (25.40)	.275 (7.0)	1	7	10
CL-111-652	111	500	Polyimide	1.00 (25.40)	.275 (7.0)	1	7	10
CL-111-969	111	500	Metallized Polyester	1.00 (25.40)	.275 (7.0)	1	7	10
CL-117-499	117	500	Nylon Cloth	1.50 (38.10)	.275 (7.0)	1	10	15
CL-117-502	117	500	Vinyl Cloth	1.50 (38.10)	.275 (7.0)	1	10	15
CL-117-619	117	500	Polyester	1.50 (38.10)	.275 (7.0)	1	10	15
CL-117-621	117	500	Translucent Polyester	1.50 (38.10)	.275 (7.0)	1	10	15
CL-117-637	117	500	Tedlar	1.50 (38.10)	.275 (7.0)	1	10	15
CL-117-652	117	500	Polyimide	1.50 (38.10)	.275 (7.0)	1	10	15
CL-117-969	117	500	Metallized Polyester	1.50 (38.10)	.275 (7.0)	1	10	15
CL-211-499	211	500	Nylon Cloth	1.00 (25.40)	0.40 (10.16)	2	7	10
CL-211-502	211	500	Vinyl Cloth	1.00 (25.40)	0.40 (10.16)	2	7	10
CL-211-619	211	500	Polyester	1.00 (25.40)	0.40 (10.16)	2	7	10
CL-211-621	211	500	Translucent Polyester	1.00 (25.40)	0.40 (10.16)	2	7	10
CL-211-637	211	500	Tedlar	1.00 (25.40)	0.40 (10.16)	2	7	10
CL-211-652	211	500	Polyimide	1.00 (25.40)	0.40 (10.16)	2	7	10
CL-217-619	217	500	Polyester	1.50 (38.10)	0.40 (10.16)	2	10	15
CL-217-621	217	500	Translucent Polyester	1.50 (38.10)	0.40 (10.16)	2	10	15
CL-217-637	217	500	Tedlar	1.50 (38.10)	0.40 (10.16)	2	10	15
CL-217-969	217	500	Metallized Polyester	1.50 (38.10)	0.40 (10.16)	2	10	15
CL-305-499	305	500	Nylon Cloth	0.50 (12.70)	0.50 (12.70)	3	3	4
CL-305-502	305	500	Vinyl Cloth	0.50 (12.70)	0.50 (12.70)	3	3	4
CL-305-607	305	500	Tamper-Proof Vinyl	0.50 (12.70)	0.50 (12.70)	3	3	4
CL-305-619	305	500	Polyester	0.50 (12.70)	0.50 (12.70)	3	3	4
CL-305-652	305	500	Polyimide	0.50 (12.70)	0.50 (12.70)	3	3	4
CL-305-969	305	500	Metallized Polyester	0.50 (12.70)	0.50 (12.70)	3	3	4

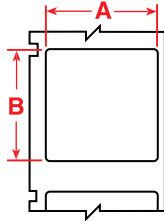
▲ I.D. PRO Plus will print up to 8 different lines of text. In wire and strip modes, I.D. PRO Plus will repeat the full legend for the entire length of the label.

Tedlar® is a registered trademark of DuPont.

I.D. PRO™ Plus LABELS

CONTINUED

► COMPONENT AND GENERAL IDENTIFICATION LABELS CONTINUED



For use on components in control panels, electronic components and circuit boards, faceplates and electronic receptacles.



Part Number	Marker Size Code	Labels Per Roll	Label Material	Label Width Inch (mm) A	Label Height Inch (mm) B	Maximum Lines of Print ▲	Maximum Characters Across Large	Maximum Characters Across Small
CL-311-122	311	500	Paper	1.00 (25.40)	0.50 (12.70)	3	7	10
CL-311-499	311	500	Nylon Cloth	1.00 (25.40)	0.50 (12.70)	3	7	10
CL-311-502	311	500	Vinyl Cloth	1.00 (25.40)	0.50 (12.70)	3	7	10
CL-311-607	311	500	Tamper-Proof Vinyl	1.00 (25.40)	0.50 (12.70)	3	7	10
CL-311-619	311	500	Polyester	1.00 (25.40)	0.50 (12.70)	3	7	10
CL-311-621	311	500	Translucent Polyester	1.00 (25.40)	0.50 (12.70)	3	7	10
CL-311-637	311	500	Tedlar®	1.00 (25.40)	0.50 (12.70)	3	7	10
CL-311-652	311	500	Polyimide	1.00 (25.40)	0.50 (12.70)	3	7	10
CL-311-969	311	500	Metallized Polyester	1.00 (25.40)	0.50 (12.70)	3	7	10
CL-317-122	317	500	Paper	1.50 (38.10)	0.50 (12.70)	3	10	10
CL-317-499	317	500	Nylon Cloth	1.50 (38.10)	0.50 (12.70)	3	10	15
CL-317-502	317	500	Vinyl Cloth	1.50 (38.10)	0.50 (12.70)	3	10	15
CL-317-619	317	500	Polyester	1.50 (38.10)	0.50 (12.70)	3	10	15
CL-317-621	317	500	Translucent Polyester	1.50 (38.10)	0.50 (12.70)	3	10	15
CL-317-637	317	500	Tedlar	1.50 (38.10)	0.50 (12.70)	3	10	15
CL-511-122	511	250	Paper	1.00 (25.40)	0.75 (19.50)	4	7	10
CL-517-122	517	250	Paper	1.50 (38.10)	0.75 (19.05)	4	10	15
CL-517-619	517	250	Polyester	1.50 (38.10)	0.75 (19.05)	4	10	15
CL-517-621	517	250	Translucent Polyester	1.50 (38.10)	0.75 (19.05)	4	10	15
CL-517-637	517	250	Tedlar	1.50 (38.10)	0.75 (19.05)	4	10	15
CL-517-969	517	250	Metallized Polyester	1.50 (38.10)	0.75 (19.05)	4	10	15
CL-917-122	917	250	Paper	1.50 (38.10)	1.25 (31.75)	8	10	15
CL-917-619	917	250	Polyester	1.50 (38.10)	1.25 (31.75)	8	10	15
CL-917-637	917	250	Tedlar	1.50 (38.10)	1.25 (31.75)	8	10	15
CL-917-969	917	250	Metallized Polyester	1.50 (38.10)	1.25 (31.75)	8	10	15

▲ I.D. PRO Plus will print up to 8 different lines of text. In wire and strip modes, I.D. PRO Plus will repeat the full legend for the entire length of the label. Tedlar® is a registered trademark of DuPont.