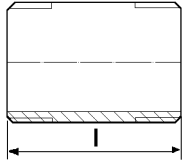
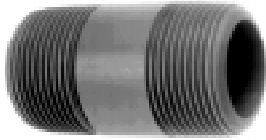


## 29.91.15

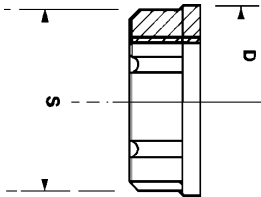


## Barrel Nipple (ABS Threaded Spigot)

d	(R)	PN	Code	£	SP	GP	g		l			
3/8		15	<b>729.911.505</b>		1		14		43			
1/2		15	<b>729.911.506</b>		1		14		50			
3/4		15	<b>729.911.507</b>		1		21		56			
1		15	<b>729.911.508</b>		1		35		63			
1 1/4		15	<b>729.911.509</b>		1		53		75			
1 1/2		15	<b>729.911.510</b>		1		31		88			
2		15	<b>729.911.511</b>		1		135		88			
3		15	<b>729.911.513</b>		1		196		128			
4		15	<b>729.911.515</b>		1		357		153			

Thread: BSP taper male

## 29.28.00



## Backnut

d	(R)	PN	Code	£	SP	GP	g	D	s			
1/2		15	<b>169.280.002</b>		1		10	37	31			
3/4		15	<b>169.280.003</b>		1		21	42	36			
1		15	<b>169.280.004</b>		1		24	55	46			
1 1/4		15	<b>169.280.005</b>		1		25	59	50			
1 1/2		15	<b>169.280.006</b>		1		34	70	60			
2		15	<b>169.280.007</b>		1		65	94	79			

Thread: BSP parallel female. Dimension s is across flats.

## Tank Connector (ABS plain socket x ABS union end)



d	PN	Code	£	SP	GP	g		h	l <sub>1</sub>	l <sub>2</sub>	a
1/2	15	<b>169.250.226</b>									
3/4	15	<b>169.250.227</b>									
1	15	<b>169.250.228</b>									
1 1/4	15	<b>169.250.229</b>									
1 1/2	15	<b>169.250.230</b>									
2	15	<b>169.250.231</b>									

Thread: BSP parallel male. With EPDM flat gasket.